

DOMUS NOVA



Broadwalk Court W8
£950,000



A one-bedroom duplex apartment for sale that effortlessly invites the outdoors in.

An imposing painted brick building on Palace Gardens Terrace, Broadwalk Court puts you in a prime place for Notting Hill's hotspots. Designed by Belgian interior designers Claire Bataille and Paul Ibens, this modernist masterpiece embraces clean lines and soothing minimalism.

Padauk floors lead you through the entrance, where bright white walls provide a calming contrast. Designed with an inverted layout, a sliding door ahead draws back to reveal the principal bedroom suite. Past a spacious walk-in wardrobe, a restrained palette allows tone and texture to do the talking. Walnut coloured carpet and dark wood panels ground the room, fitted with a built-in Bataille and Ibens bed. In the en suite bathroom, slate flooring contrasts bright white tiles that wrap around a walk-in shower.





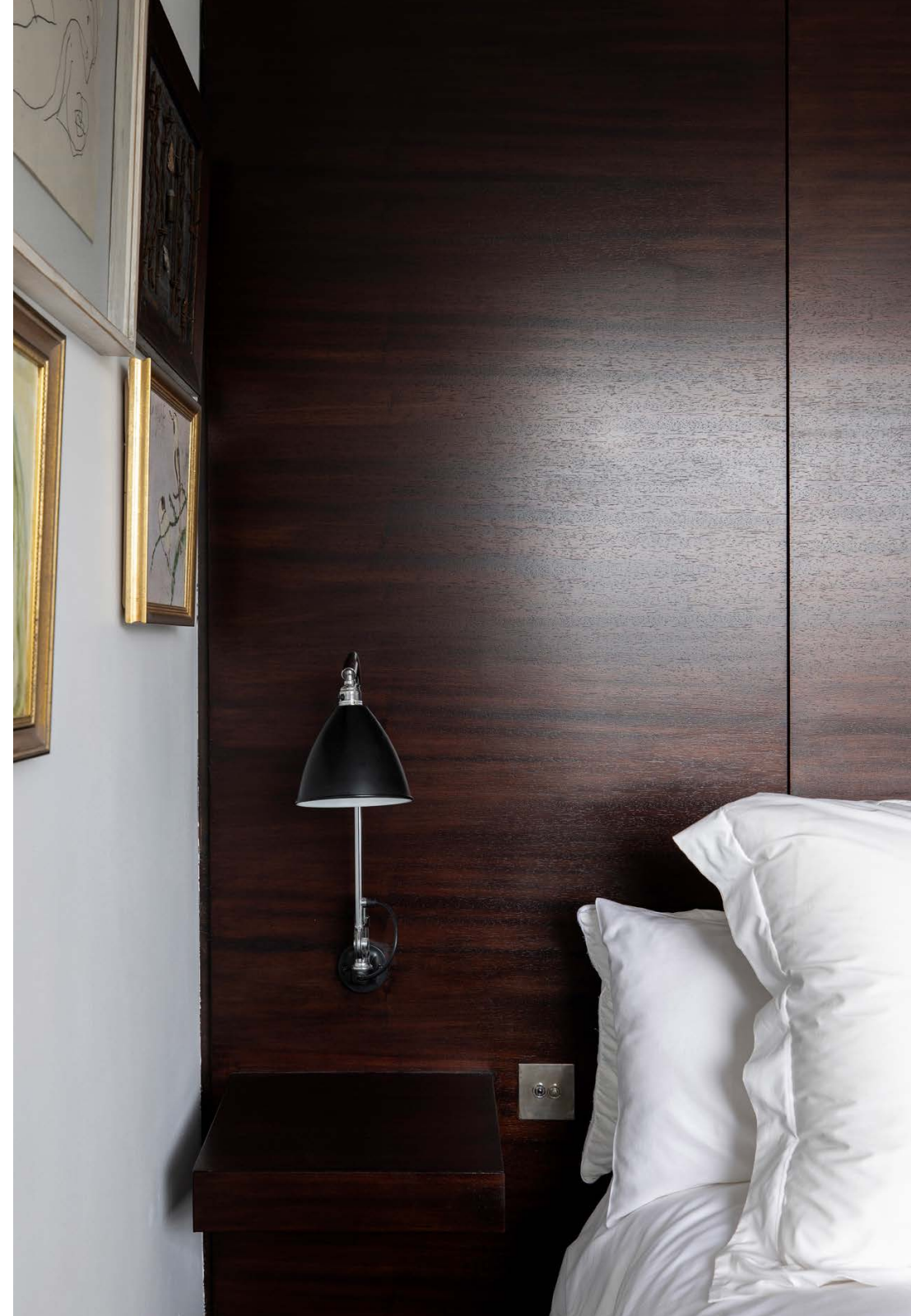






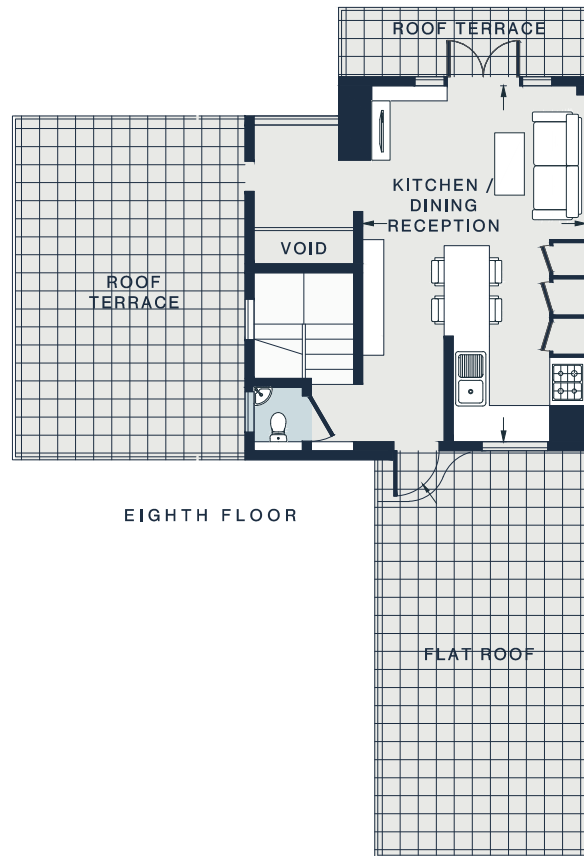
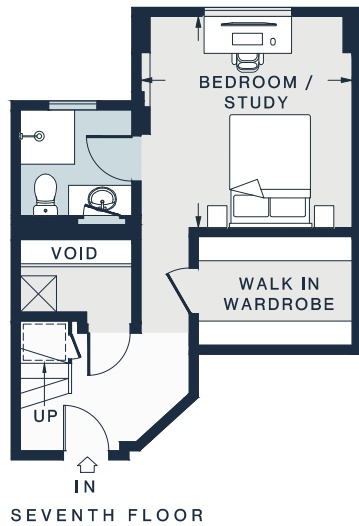
Steps guide the way upstairs, where the same pared-back tones continue in the open-plan living space. Unique red-toned padauk flooring and cabinetry brings depth to a U-shaped kitchen, complete with a bright white Corian breakfast bar and barstools designed by Bataille and Ibens. Above an integrated oven, a stainless steel alcove adds visual interest. In warmer weather, an expansive roof terrace beckons for alfresco dining, while double doors in the adjoining reception room open to a balcony with views across to Kensington Gardens.

From here, a corridor leads the way to an additional outdoor living area. Bordered by verdant greenery, built-in bench seating provides a calming place to savour expansive views of Notting Hill and its surroundings.









KITCHEN / DINING / RECEPTION

19'4 x 11'2 (5.9m x 3.4m)

BEDROOM / STUDY

11'6 x 11'2 (3.5m x 3.4m)

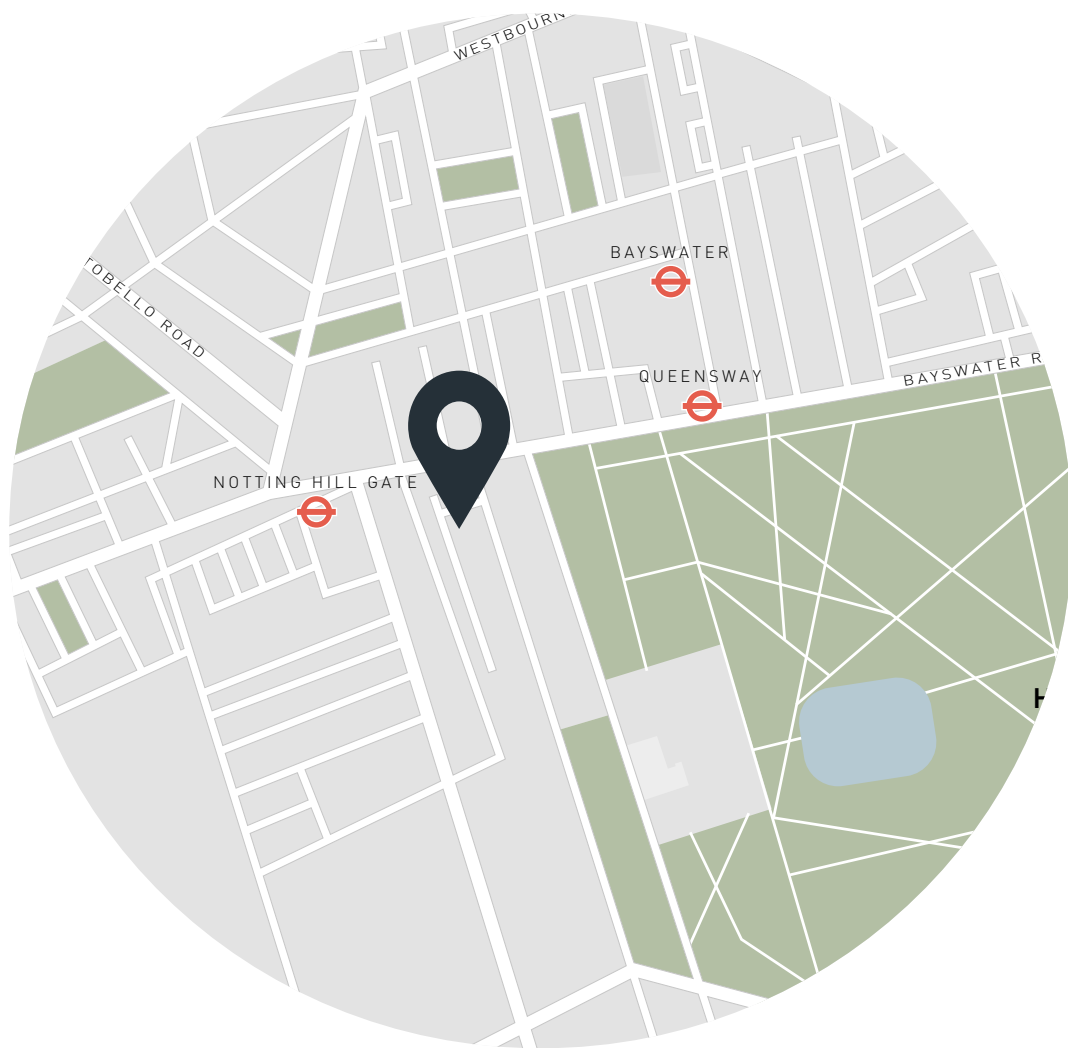
Approx. Gross Internal Area = 671 sq ft / 62.3 sq m

Floor plans are for illustrative purposes only and not to scale. Compliant with RICS code of measuring practice.

Property Details

- Open-plan kitchen and reception room
- Principal bedroom suite with walk-in wardrobe
- Extensive storage space
- Roof terrace
- Balcony
- Royal Borough of Kensington & Chelsea

- Approx. 671 sq ft / 62.3 sq m
- EPC - D
- Council tax - C
- Leasehold - circa 995 years



Location

Broadwalk Court places you on the doorstep of bright, bustling Notting Hill. Start the day with a wander through picturesque Kensington Gardens, stopping by The Orangery for a traditional afternoon tea. Pick up an afternoon caffeine kick from Guillam Coffee House, then head up through Portobello Road to browse the antiques and oddities for sale. Complete your day with three-Michelin-starred dining at Core by Clare Smyth, then a movie at the Electric Cinema.

Notting Hill Gate – 3 mins (Central, Circle, District)

Specialising in London
and Ibiza's design-led homes

Let's talk
020 7221 7817
sales@domusnova.com
domusnova.com

The particulars above are a guide, not an offer or contract. Descriptions, photographs and plans are not statements or representations of fact. Measurements are approximate and not to scale. Prospective purchasers must verify the accuracy of the information within the particulars. Domus Nova does not give any representations or warranties, nor represent the Seller legally. Domus Nova has no liability, for any costs, losses or expenses incurred by the Seller or a prospective buyer relating to the sales and buying transaction.

Our Sales Disclaimer, trading names and privacy policy on how your data is processed and used is found in full on our website in our [Privacy Statement](#).

© Domus Nova 2023. All rights reserved.