

# DOMUS NOVA



British Grove, Chiswick W4  
£2,900,000



Soaring proportions meet modern design at British Grove. Beyond a modest brick façade, architecture by Trolliet Design Studio reimagines this former studio as a family home with contemporary style.

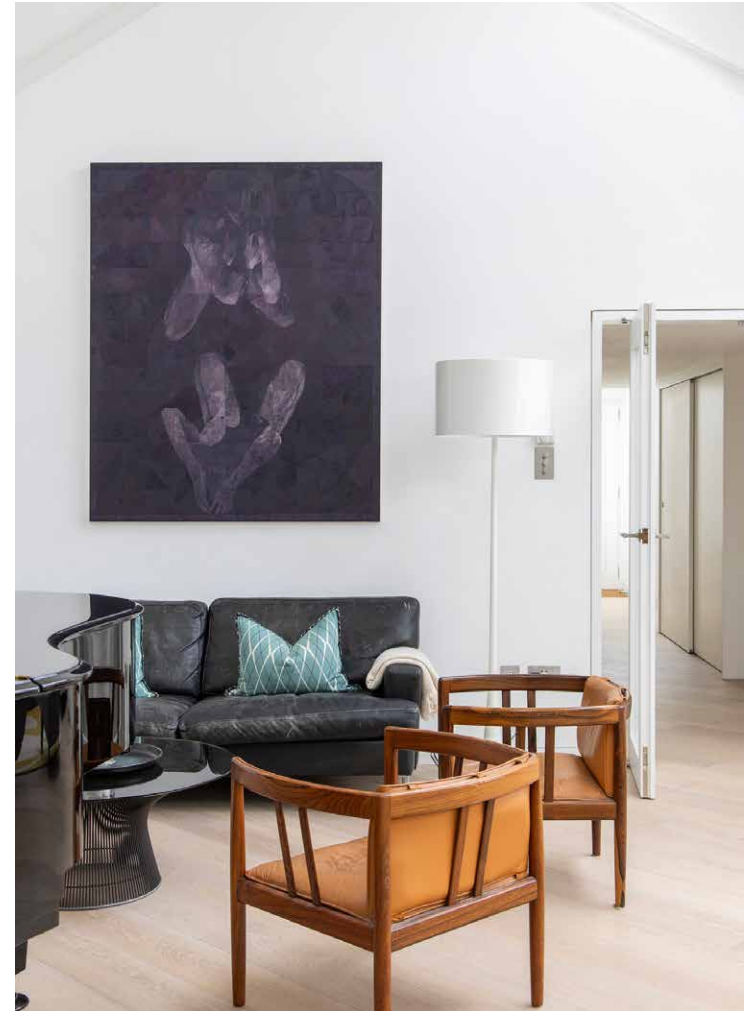
Set within walking distance of the River Thames, a peaceful feel captivates courtesy of the suburban Chiswick setting. Past a sky-lit entrance, oak flooring sweeps through the heart of the home – a sprawling setting of nearly 1,000 sq. ft. An open layout sets the stage for family gatherings, with twin vaulted ceilings and seven skylights initiating a captivating interplay of scale and sunlight.

Featuring made-to-measure design by John Lewis of Hungerford, the kitchen enjoys a subtle sense of separation. Deep green cabinetry offers a striking contrast to white stone counters, complimented by Miele appliances and an integrated coffee machine. From the adjacent dining area, sliding glass Schüco doors draw the outside in, framing views of the landscaped courtyard garden.

















“

An open layout sets the stage for family gatherings, with twin vaulted ceilings and seven skylights initiating a captivating interplay of scale and sunlight.





The principal bedroom suite sits at the property's front, benefiting from private access via an exterior entrance. Comprising two generous rooms, it's a versatile space to set up as suits – a home office, indulgent dressing room, or private lounge. Neutral hues extend into the en suite bathroom, fitted with heated tiles and a bathtub. Three further bedrooms are arranged across the ground and first floor, each dressed in soothing Farrow & Ball tones and featuring en suite shower rooms.

Recently renovated to an exacting standard, the home features entirely updated heating and plumbing systems, with a new gas boiler and radiators.



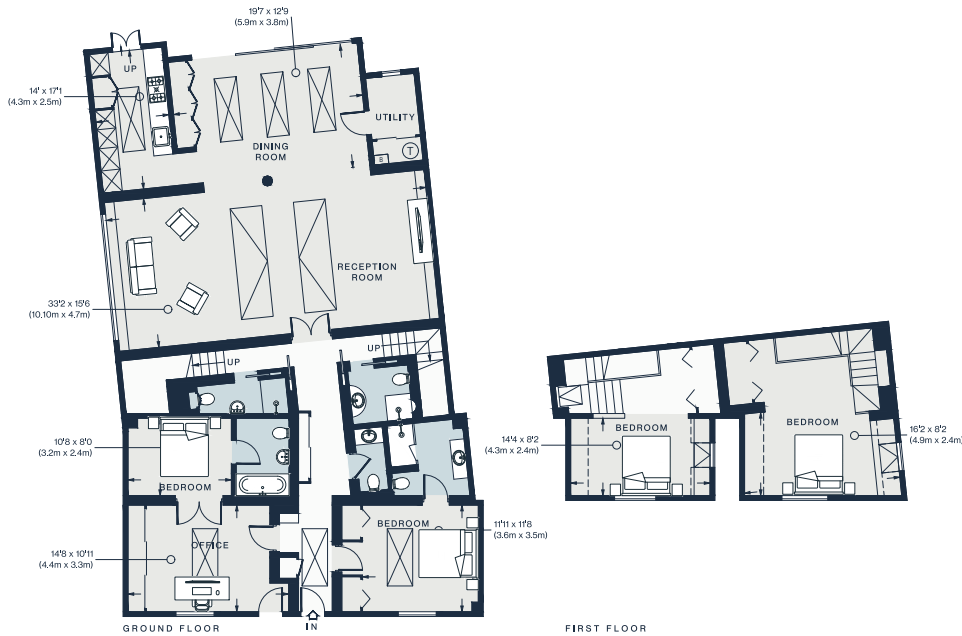












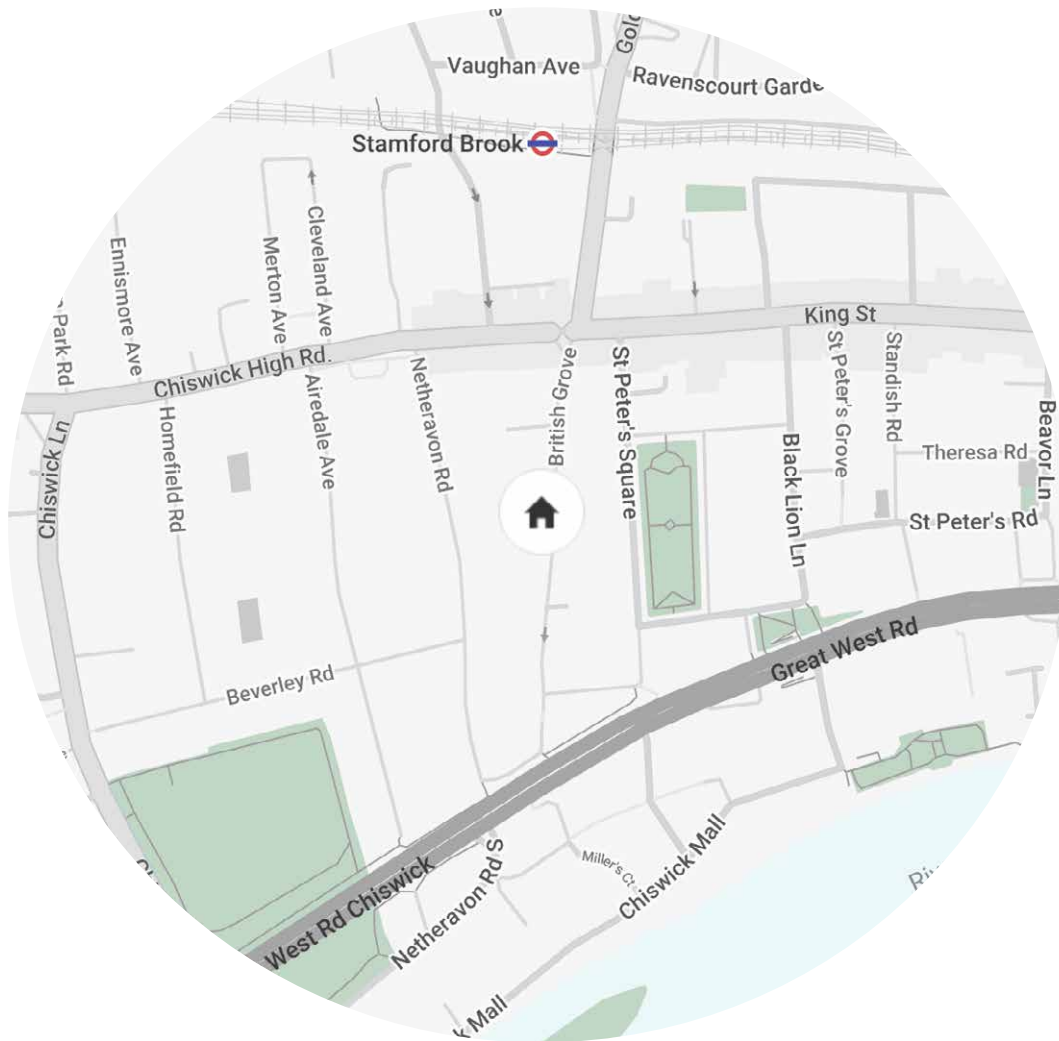
## Property Details

4 bedrooms, 4 bathrooms  
Architecture by Troillet Design Studio  
Contemporary kitchen  
Open-plan dining and reception room  
Principal bedroom suite  
Three guest bedroom suites  
Landscaped garden  
London Borough of Hammersmith & Fulham

Approx. 2,451 sq ft / 227.7 sq m  
EPC=D  
Tenure: Freehold  
Council Tax Band: G

Approx. Gross Internal Area = 2451 sq ft / 227.7 sq m

Floor plans are for illustrative purposes only and not to scale. Compliant with RICS code of measuring practice.



## Location

An enviable enclave of west London, Chiswick is a peaceful suburb with the feel of a village. For breakfast supplies, head to King St where cafes await. Caffeinate at Artisan Coffee, then wander down to the Thames for a riverside stroll or indulgent brunch at The Elder Press Cafe. Along to Turnham Green Terrace, grab groceries from Bayley & Sage or dine in at Côte. Offering easy access to central London, Stamford Brook station is just a 5 minute walk away.

Stamford Brook - 5 mins (District)

Specialising in London  
and Ibiza's design-led homes

Let's talk  
020 7221 7817  
sales@domusnova.com  
domusnova.com

The particulars above are a guide, not an offer or contract. Descriptions, photographs and plans are not statements or representations of fact. Measurements are approximate and not to scale. Prospective purchasers must verify the accuracy of the information within the particulars. Domus Nova does not give any representations or warranties; nor represent the Seller legally. Domus Nova has no liability, for any costs, losses or expenses incurred by the Seller or a prospective buyer relating to the sales and buying transaction.

Our Sales Disclaimer, trading names and privacy policy on how your data is processed and used is found in full on our website in our [Privacy Statement](#).

© Domus Nova 2024. All rights reserved.