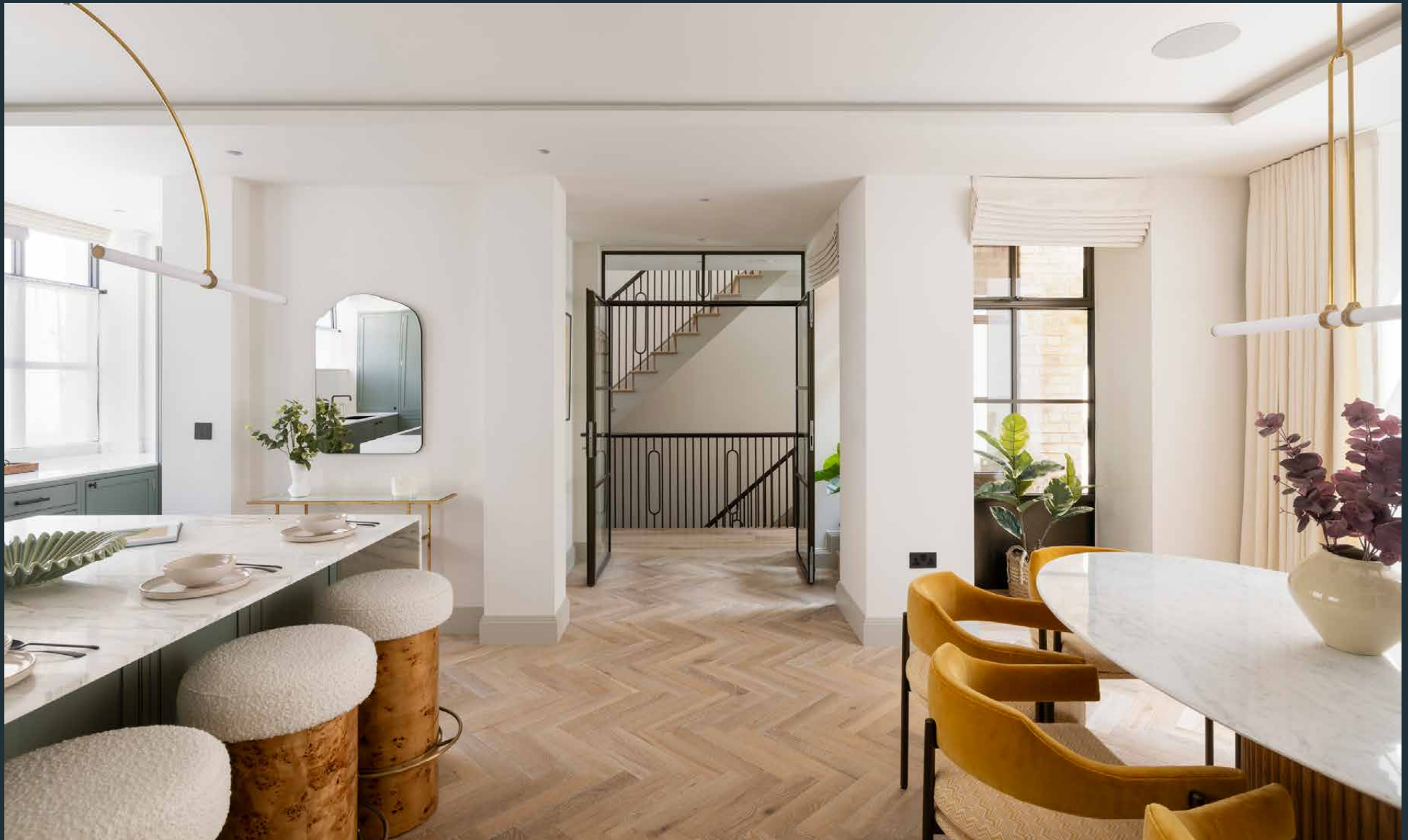


DOMUS NOVA



Bridstow Place, W2 – £10,000 p/w (LL) / £20,000 p/w (SL)

In partnership with **BARNES**
INTERNATIONAL REALTY



Cottage-lined and enclosed, Bridstow Place sits back from the Westbourne Grove bustle – close to everything, insulated enough to instill calm. This newly built house is immediately distinct on the row: London stock brick, tall Crittall glazing and a deep wooden door.

Inside, five meticulously designed floors are seamlessly connected by a passenger lift. The kitchen anchors the ground level – shaker cabinetry in warm greige, marble worktops and a full Miele suite with double ovens. Three glass pendants hang above, while herringbone floors run below. Casual dining plays out across the integrated breakfast bar; an oval walnut table invites more formal occasions.







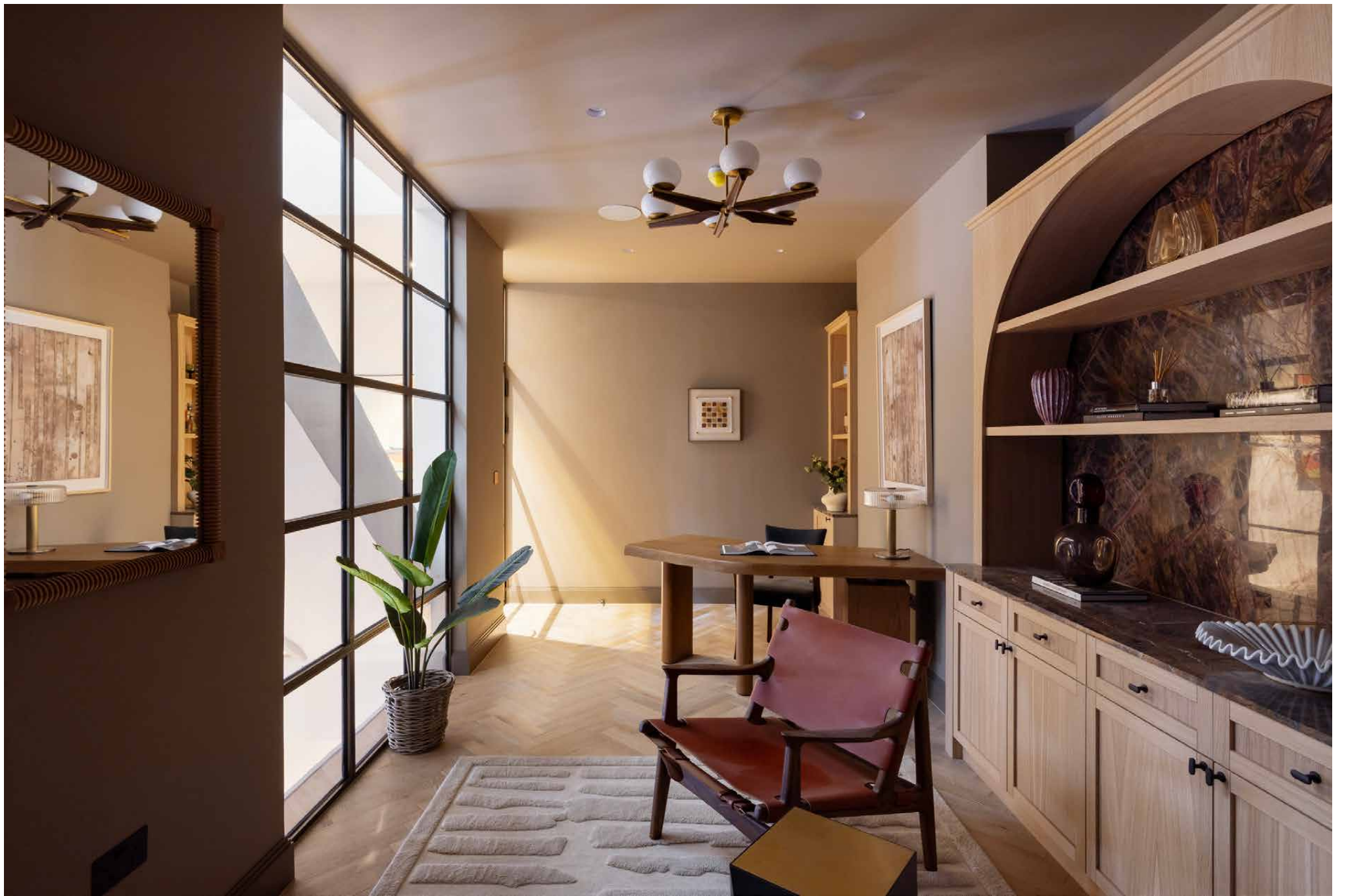


Descend a floor and the house reveals a different side. A panelled reception room centres around a wide inset fireplace, backlit shelving running the full width of the media wall. Next to it, a snug in deep raspberry red offers versatility as a study or home bar with a dedicated drinks area. Below, the basement level follows through. The cinema room is properly kitted out: framed acoustic panels, a large built-in screen and curved velvet armchairs. The gym sits adjacent – mirrored and LED-lit.

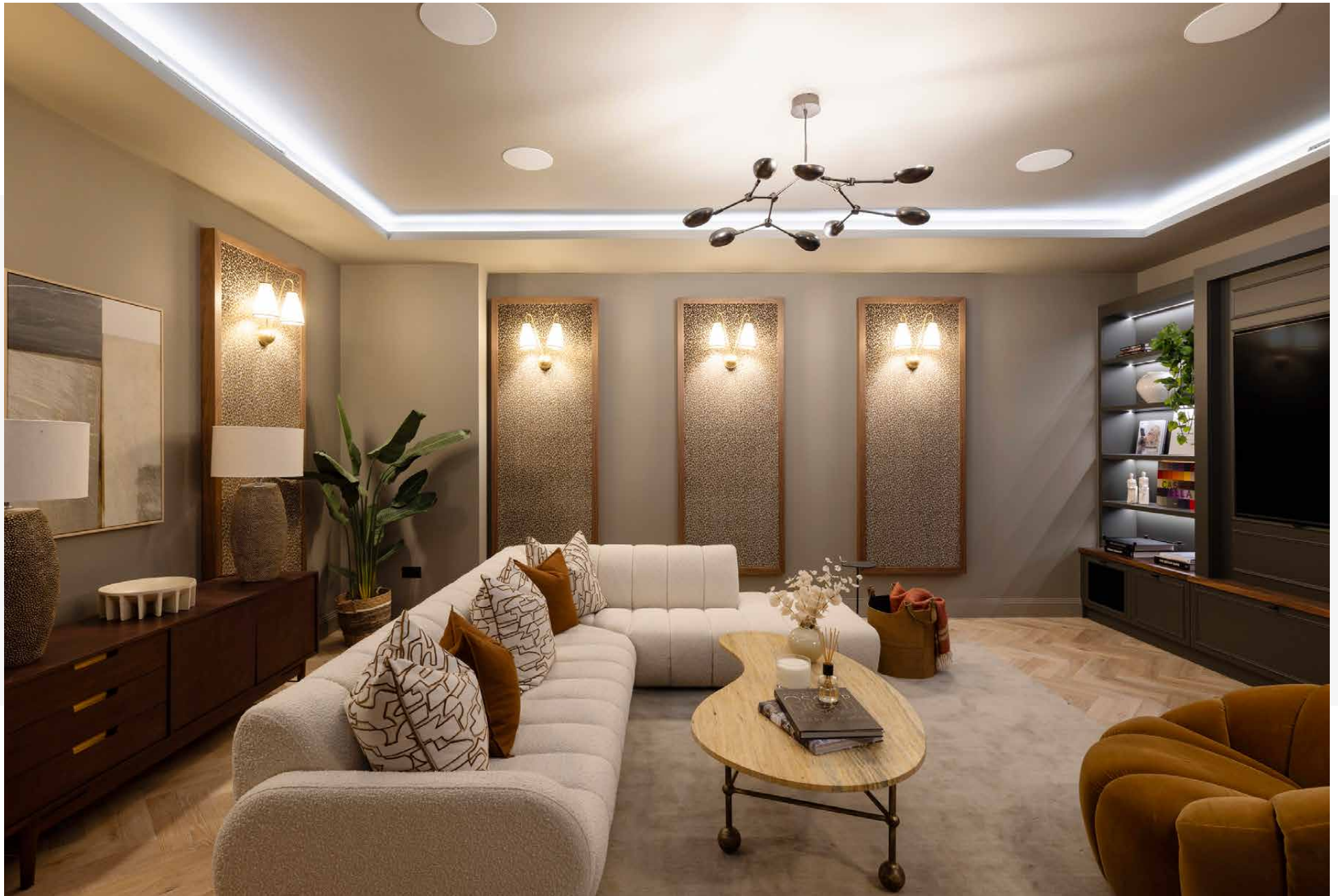














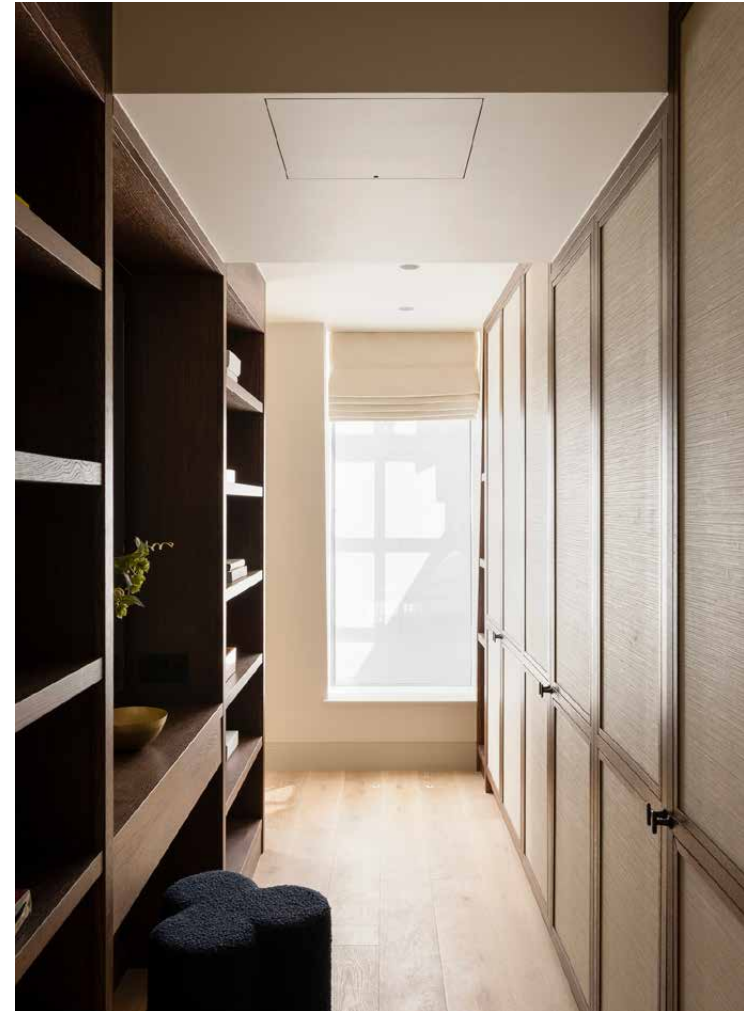


The first floor holds three bedrooms, two with en suites and all with substantial built-in storage. Above, the entire second floor is occupied by the principal suite. The dressing room – open shelving on one side, fitted wardrobes on the other – sits neatly behind the sleeping space.

Crittall doors open the length of the room onto the south-facing roof terrace: decked and furnished with plush outdoor seating. The en suite bathroom sits to the opposite side of the level, complete with a freestanding tub and separate shower.

Garage parking from the ground floor comes with a 22kW three-phase EV charger.



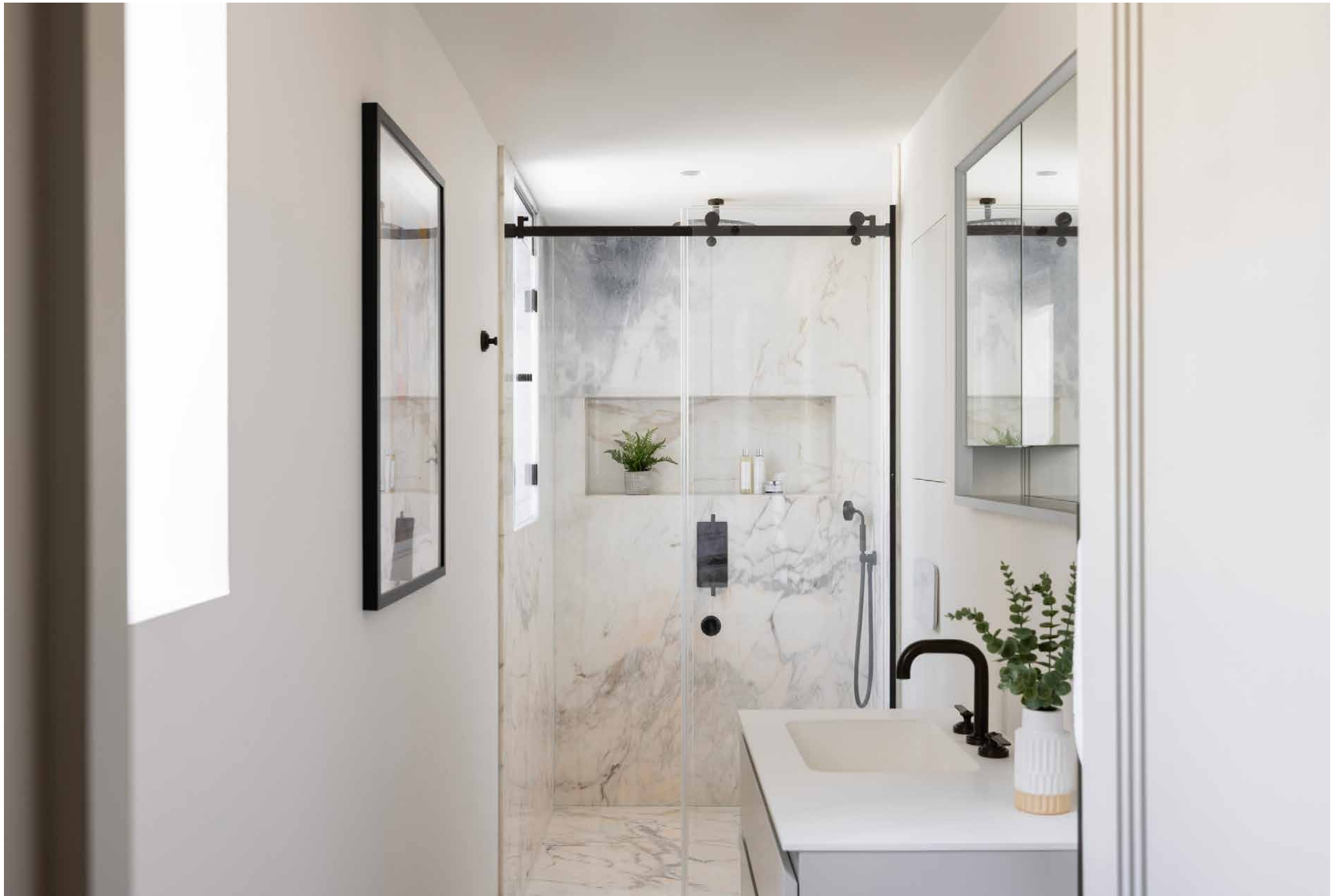




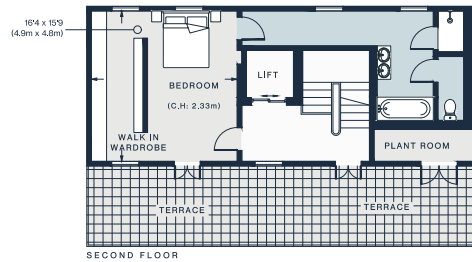




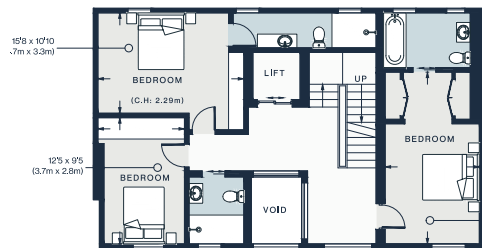




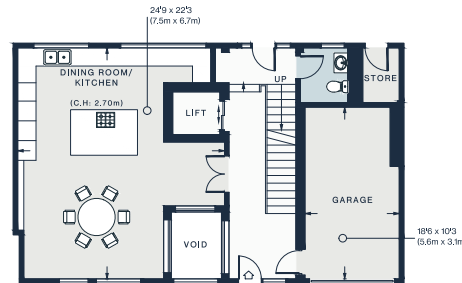




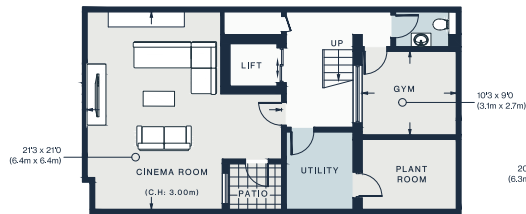
SECOND FLOOR



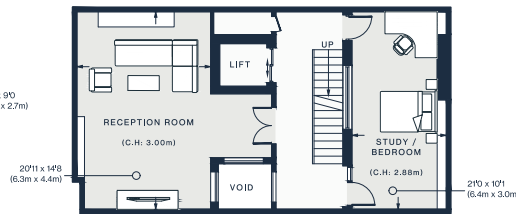
FIRST FLOOR



GROUND FLOOR



BASEMENT



LOWER GROUND FLOOR

Property Details

4 Bedrooms, 4 Bathrooms

New build house with meticulous interior design

Five floors connected by passenger lift

Open-plan kitchen and dining room

Reception room with inset fireplace

Versatile study/snug

Cinema room with built-in screen and bespoke joinery

Home gym with mirrored wall

Principal bedroom suite with walk-in wardrobe and terrace access

South-facing roof terrace

Underfloor heating and air conditioning

Integrated security system

Garage with 22kW three-phase EV charger

City of Westminster

Approx. 4,255 sq ft / 395 sq m

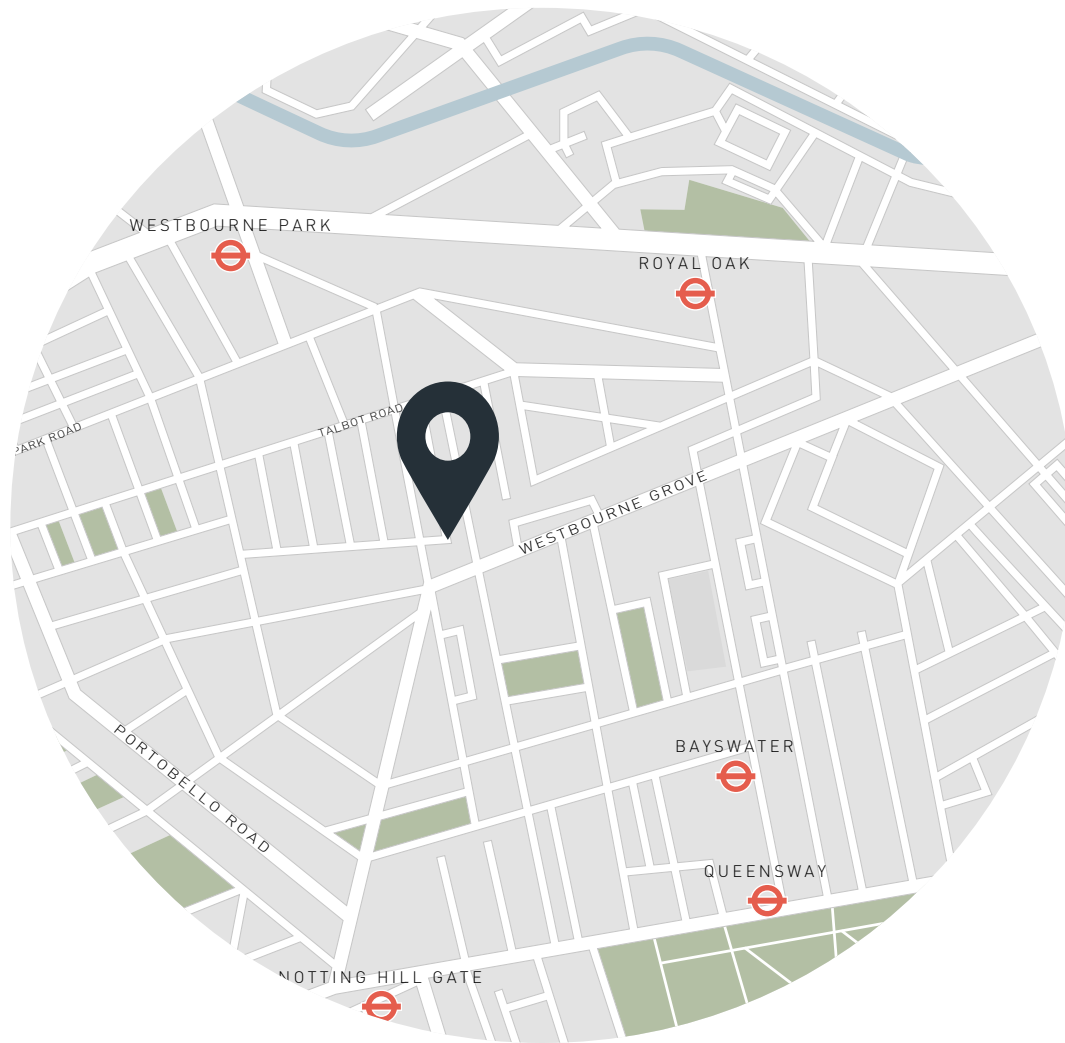
EPC=B

Deposit: £60,000 (LL) / £80,000 (SL)

Council Tax Band: TBD

Approx. Gross Internal Area = 4255 sq ft / 395.03 sq m

Floor plans are for illustrative purposes only and not to scale. Compliant with RICS code of measuring practice.
Furniture layouts are indicative only. This property may be furnished, part-furnished or unfurnished. Please refer to your agent for details.
Prepared for Domus Nova. Copyright © All Rights Reserved.



Location

Bridstow Place carries a quietness that's rare this close to central London. A short, cottage-lined backstreet off Chepstow Road, it sits at the meeting point of Notting Hill and Westbourne Grove. For relaxation, the Six Senses Spa at the nearby Whiteley's development will be the UK's first. Take a stroll around Kensington Gardens, brunch at Beam, then browse the rails at Reformation and Sézane. Round off the day with dinner at The Barbury or Endo Kazutoshi's sushi hotspot Sumi. For drinks, there's local favourite The Cow or The Westbourne – both just minutes from your door.

Royal Oak – 12 mins

Notting Hill Gate – 12 mins



Who ——— we are

Forward-thinkers in property, design and culture, we're an estate agency that hits refresh.

Domus Nova was born out of a desire to do things differently; to break the traditional agency model and focus on design-led homes in London and Ibiza, all while delivering the highest levels of personal service.

Our story starts in the nineties when we founded Notting Hill's first boutique agency – and we continue to open the doors to the most remarkable spaces, revealing them to our like-minded community.

We want to help you live better – and believe considered design can do that. That's why we remain committed to building on our legacy, in collaboration with BARNES International, an established agency with a market-leading presence in 22 countries.

Uniting our local insight and curated portfolio with BARNES International's expansive reach, we can facilitate the best opportunities in not only London and Ibiza, but also across Europe, the US and further afield – whether that's a château in the South of France, a penthouse in New York, or a chalet in the Swiss Alps.



DOMUS NOVA

Specialising in London
and Ibiza's design-led homes

Let's talk
020 7727 1717
lettings@domusnova.com

The property particulars are a guide not statements. Descriptions, photographs, and plans are for guidance and should be checked by the prospective tenant. The Property is offered "subject to contract and references". No warranties, representations, or Tenancy is given by Domus Nova. Expenses incurred by a prospective tenant will not be reimbursed if the Landlord withdraws prior to the Tenancy Agreement being signed, dated and exchanged and cleared funds received. Furniture and other items shown in a property at viewing may belong to a current tenant. The prospective tenant should verify in writing which fixtures and fittings forms part of the Tenancy. Our full lettings disclaimer together with trading names and our [Privacy Policy](#) is shown on our website

© 2025 Domus Nova in partnership with BARNES International. All rights reserved.

In partnership with
BARNES
INTERNATIONAL REALTY