

DOMUS NOVA



Westbourne Grove W11
£8,250 p/w - Short let



An uplifting five-bedroom home in Shepherd's Bush. Masterminded by Vada Collective, this light-filled retreat is a treasure trove of considered design details.

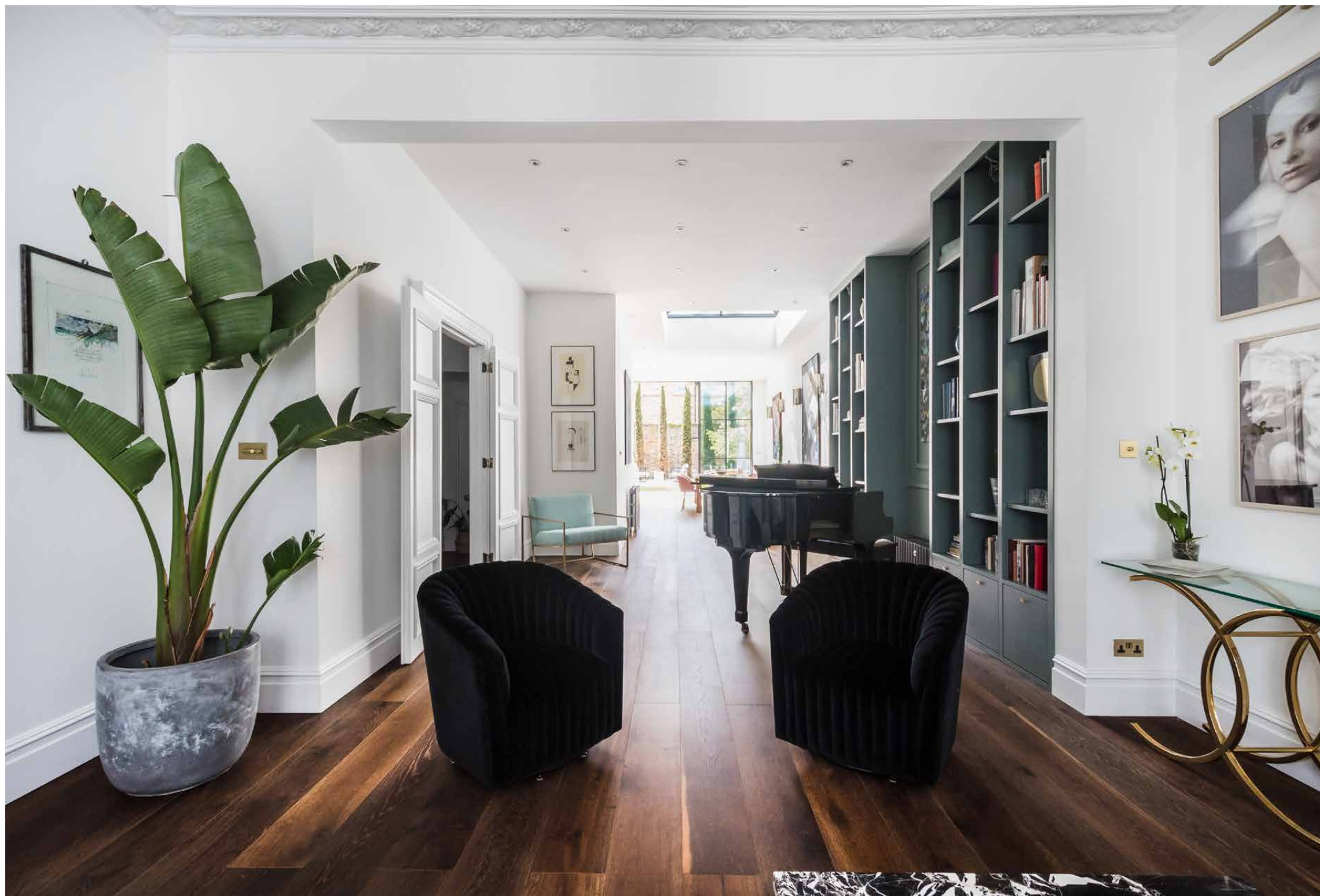
Set on a leafy residential road in Shepherd's Bush, this five-bedroom home makes a colourful first impression. Behind a pink-toned door, three floors of considered living space are executed with precision, courtesy of design studio Vada Collective.

A sweeping open-plan layout characterises the ground floor. A bay window floods the reception room with light, illuminating decorative cornicing and an ornate fireplace. Furnishings are stylish yet understated, highlighting the gilded chandeliers, prints and artwork thoughtfully placed throughout. Adjacent, full-height teal-toned joinery backdrops a glossy black grand piano.

Dark wood floors continue into the kitchen and dining area, brightly illuminated through a wall of full-height Crittall glazing and generous lantern skylights. Grounding the kitchen is a large Carrara marble island, while white panelled cabinets and a large range oven are accentuated with gold handles. Eight dusty-rose chairs sit around the wooden dining table; a modish setting for entertaining. Beyond, the garden is immaculately presented across a patio and lawn. Timber fences create a sense of privacy, with seating and dining areas enlivened by dramatic Cyprus trees.



















Spread over the two upper floors, each bedroom has been finished with an exceptional eye for detail and timeless interior design. The principal bedroom sprawls across the first floor, with whitewashed walls setting a calming scene for a super-king-size four-poster bed, freestanding bath and marble fireplace. Hardwood flooring flows into a dedicated dressing area with built-in wardrobes and a television. A marble-wrapped en suite can be seen through steel-framed floor-to-ceiling glass, where a shower and dual vanity are wrapped in oversized marble tiles.

Also on the first floor, a guest bedroom suite features wooden parquet floors and a sculptural fireplace, while its bathroom showcases a freestanding tub alongside a reclaimed copper radiator. An additional guest bedroom suite takes a moodier turn with dark walls and a matching bathroom, complete with an inky freestanding tub. Elsewhere, two children's rooms — one a single, one with a bunk bed — are served by a family bathroom.





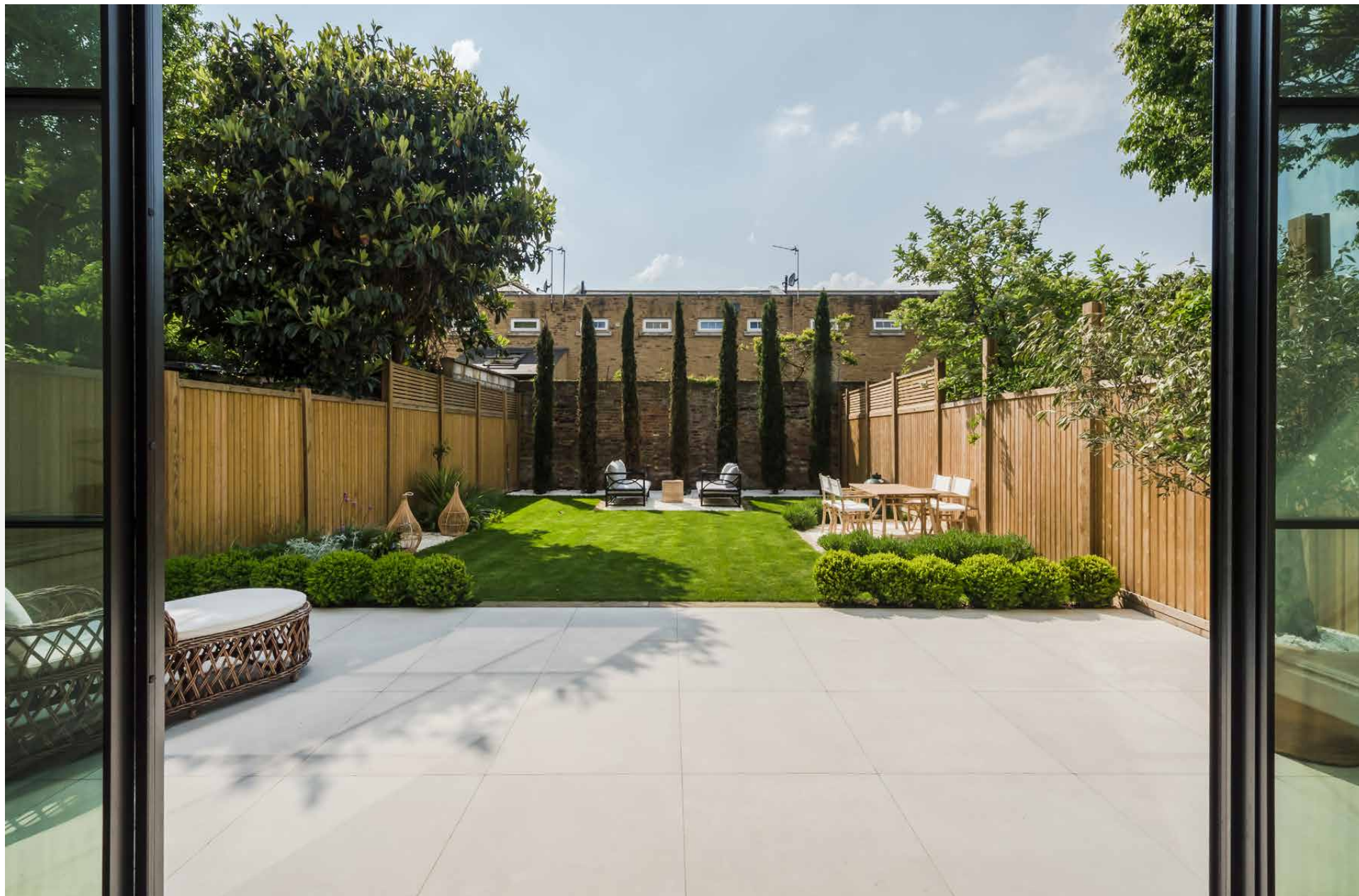




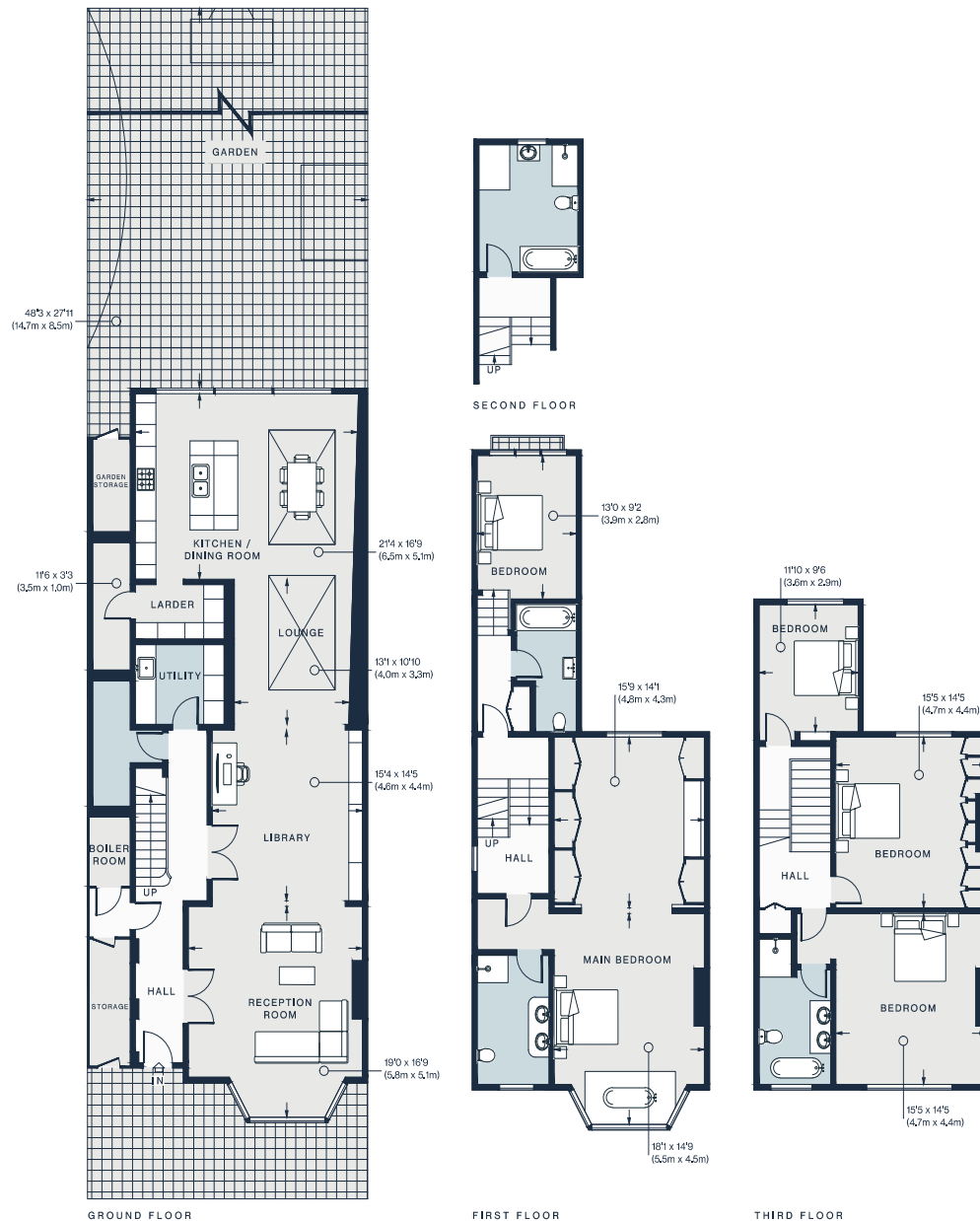












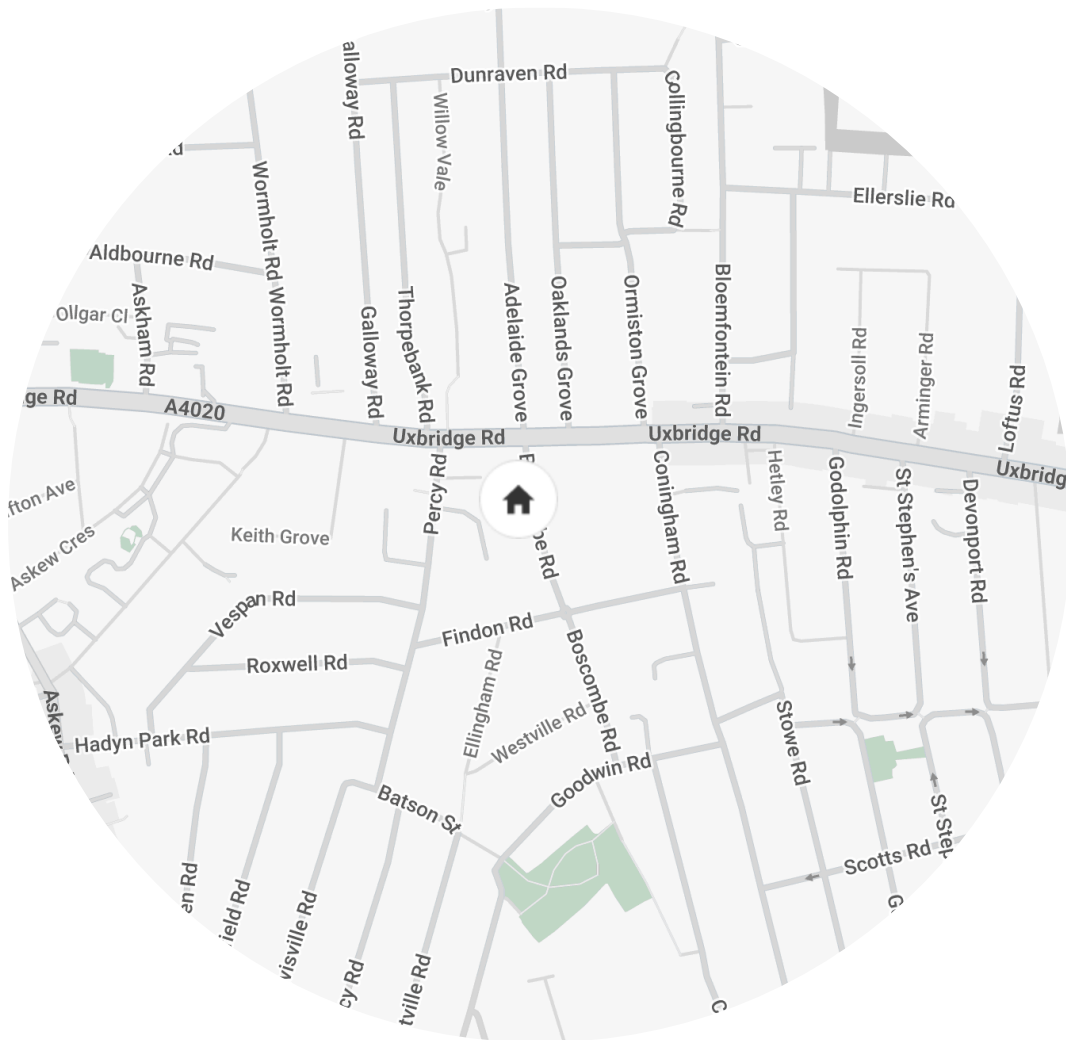
Approx. Gross Internal Area = 3385 sq ft / 314.5 sq m

Property Details

Interior design by VADA Collective
 Open-plan kitchen, dining and reception room
 Principal bedroom suite with dressing room
 Two guest bedroom suites
 Two further bedrooms
 Family bathroom
 Landscaped garden
 London Borough of Hammersmith and Fulham

Approx 3,385 sq ft / 314.5 sq m
 EPC = Rating D
 Council Tax = Band G
 Deposit Payable - £33,000

Floor plans are for illustrative purposes only and not to scale. Compliant with RICS code of measuring practice.
 Furniture layouts are indicative only. This property may be furnished, part-furnished or unfurnished. Please refer to your agent for details.



Location

Boscombe Road is a peaceful, leafy street close to Shepherd's Bush's best-loved hotspots. Start your day with coffee at Wild Thyme then head to the UK's largest shopping centre, Westfield – The Village is home to various world-class luxury brands. Music lovers will appreciate Shepherd's Bush Empire. Stop by White City House for their rooftop swimming pool or try out local favourite restaurants including Waka, Bluebird or Michelin-starred Endo at the Rotunda.

Goldhawk Road - 15 mins

White City - 17 mins

Sheperds Bush - 17 mins

Specialising in London
and Ibiza's design-led homes

Let's talk
020 7727 1717
lettings@domusnova.com
domusnova.com

The property particulars are a guide not statements. Descriptions, photographs, and plans are for guidance and should be checked by the prospective tenant. The Property is offered "subject to contract and references". No warranties, representations, or Tenancy is given by Domus Nova. Expenses incurred by a prospective tenant will not be reimbursed if the Landlord withdraws prior to the Tenancy Agreement being signed, dated and exchanged and cleared funds received. Furniture and other items shown in a property at viewing may belong to a current tenant. The prospective tenant should verify in writing which fixtures and fittings forms part of the Tenancy. Our full lettings disclaimer together with trading names and our [Privacy Policy](#) is shown on our website