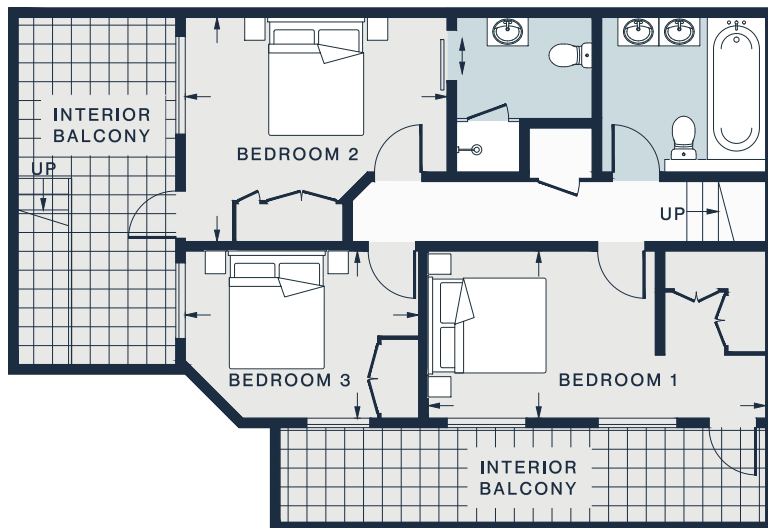


GROUND FLOOR



LOWER GROUND FLOOR

KITCHEN /  
RECEPTION ROOM  
22'11 x 20'10 (6.9m x 6.3m)

---

BEDROOM 1  
11'1 x 8'5 (3.6m x 2.5m)

---

BEDROOM 2  
11'11 x 11'8 (3.6m x 3.5m)

---

BEDROOM 3  
12'2 x 9'8 (3.7m x 2.9m)

---

Approx. Gross Internal Area = 1249 sq ft / 116.0 sq m

---

Floor plans are for illustrative purposes only and not to scale. Compliant with RICS code of measuring practice.  
Prepared for Domus Nova. Copyright © All Rights Reserved.