

DOMUS NOVA



Blythe Road W14 – £5,500,000

In partnership with **BARNES**
INTERNATIONAL REALTY



A feat of architectural design, this curvaceous seven-bedroom family house for sale is a complete one-of-a-kind, thanks to the vision of its architect owner.

Alex Michaelis, co-founder of architectural practice Michaelis Boyd, has brought a striking take on Le Corbusier-esque modernism to his free-flowing home. Built in 2015 on the site of a former garage, the gently curving dwelling sits in response to its surroundings. Soft and undulating, with no hard edges, it peels away from the existing buildings on either side.

A showpiece of ingenious architecture and design, it's first and foremost a well-functioning family home that puts a playful twist on everyday living. From its staircase slide to the fireman's pool and heated outdoor swimming pool, this is house that doesn't take itself too seriously despite its impressive credentials.

The floorplan is considered and moves between vast convivial spaces for congregating and more private areas, while interesting shapes create dynamic, inspiring backdrops. A rectangular ground floor that spans a generous entrance hall, boot room, kitchen and reception room, is topped by two cylindrical volumes that house the sleeping quarters, connected by a bridge.







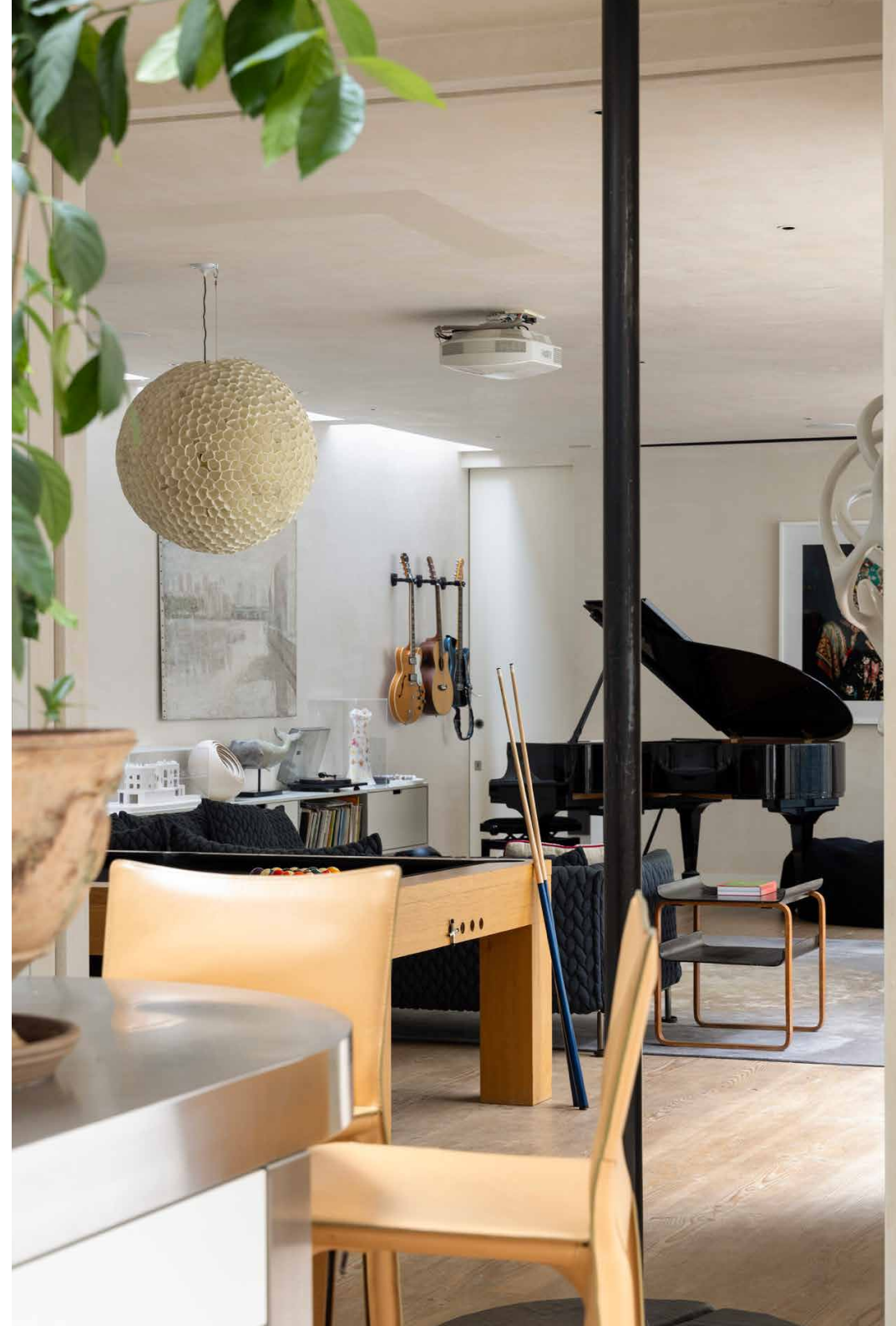
Lit by two huge lightwells and floor-to-ceiling glass doors, the standout kitchen and dining room is the heart of the

home. Along one wall, a seemingly endless stretch of banquet seating can accommodate 20 diners, making this an unrivalled entertaining hub. Designed to both cater for a crowd and withstand the demands of everyday use, the space balances ergonomics and aesthetics, and is centred around a five-metre-long stainless steel Bulthaup island.

The restaurant quality kit by Electrolux Grand Cuisine is just as impressive. The culinary arsenal includes a gas hob, combination oven, blast chiller, sear hob, surround induction zone and precision vacuum sealer, none of which would look out of place in a professional kitchen. Tall units and roomy countertops provide all the necessary storage and preparation space to cater to your inner chef.

Take the fireman's pole down to breakfast, followed by a morning dip in the outdoor pool; well insulated and heated to 30 degrees, it can be used year around. Inside, underfloor

heating and triple glazing ensure an ambient living environment in all seasons, too. Overlooking the courtyard garden and pool, the adjoining reception room is a similarly calming space that's large enough for everyone to come together for movie nights – with a wood burner to crank up the cosiness. Bringing up the rear of the ground floor, sliding doors conceal a home office, quietly tucked away.









A sense of the home's curving structure becomes more apparent as you ascend to the first and second floors. Circular porthole windows and looping balustrades bring a soothing quality that's echoed in the pared-back interior design choices. Energised by ample natural light, the palette is minimal throughout, with plaster finish walls and wide plank Dinesen wood floors.

The first floor is divided between an arching guest bedroom suite with a marble-clad bathroom, and a convenient utility room at one end, and three bedrooms and an inviting family bathroom at the other, featuring a freestanding bathtub and separate shower.

The highlight of the floor above is the principal suite, elevated by a rare gem of an in-room bathtub, carved from a single piece of marble. Two further bedrooms await on this level – both finished in the same understated style – along with another family bathroom and a TV snug complete with a curved banquet sofa.





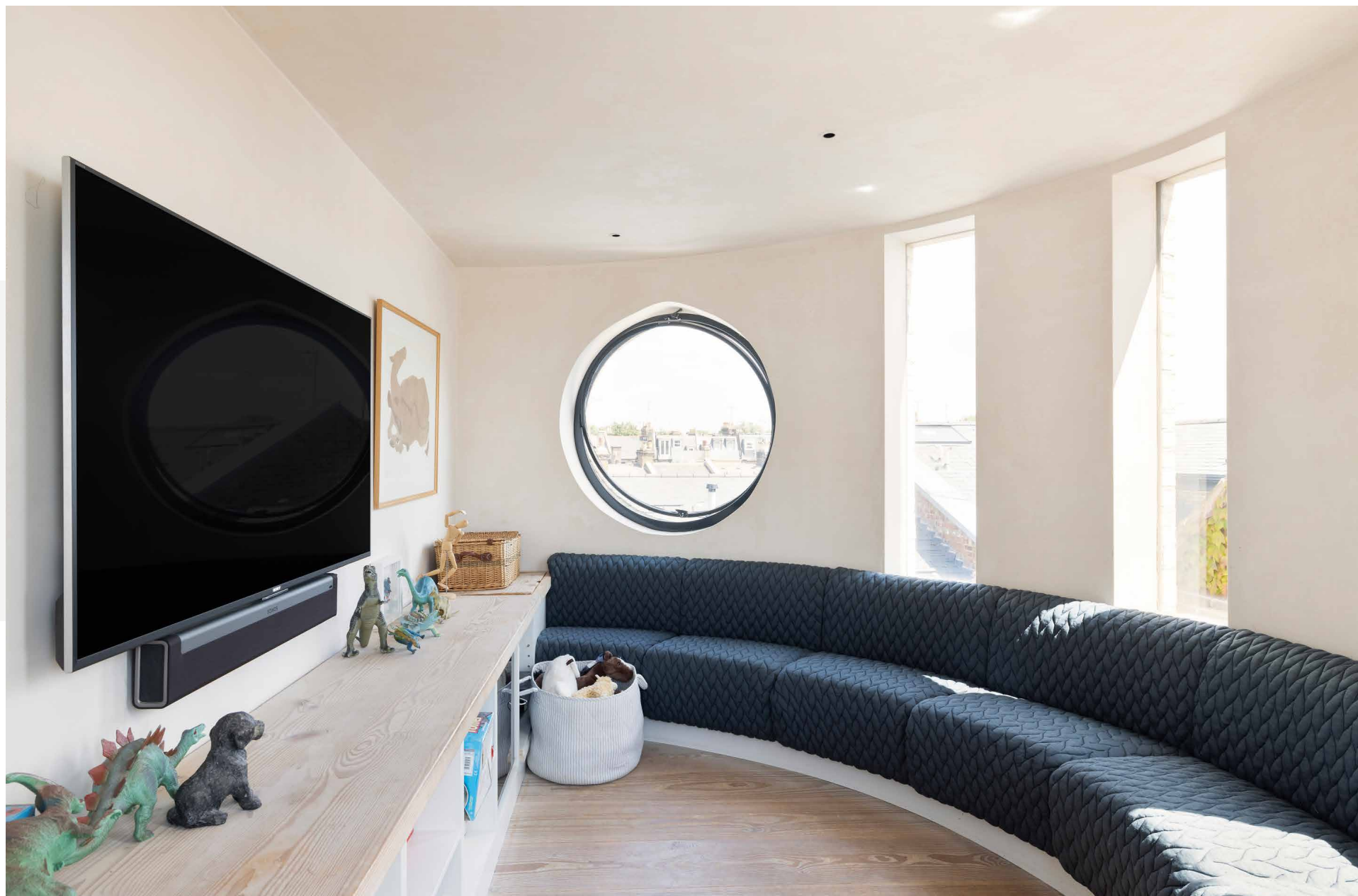






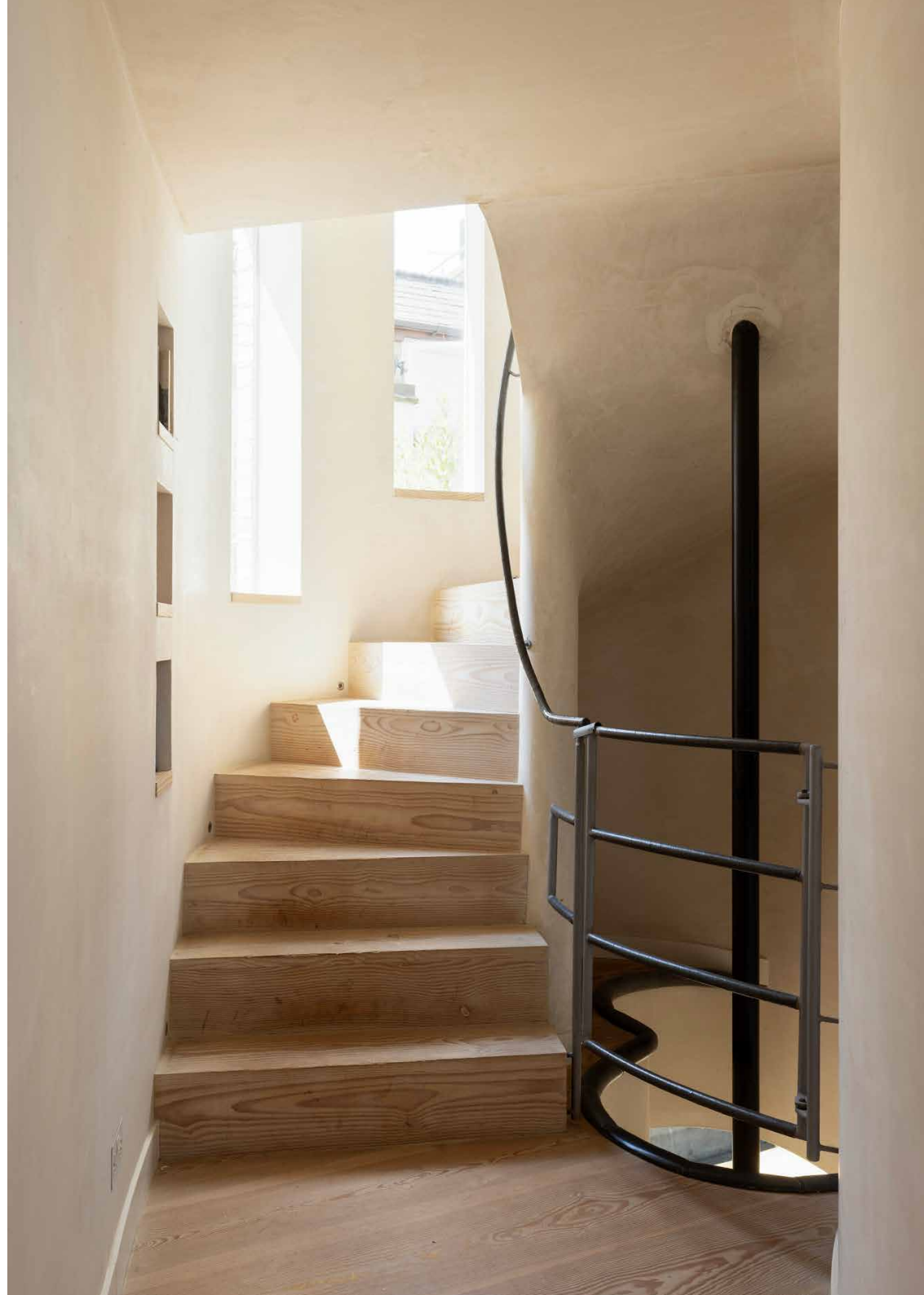


“ A showpiece of ingenious architecture and design, Blythe Road is first and foremost a well-functioning family home that puts a playful twist on everyday living

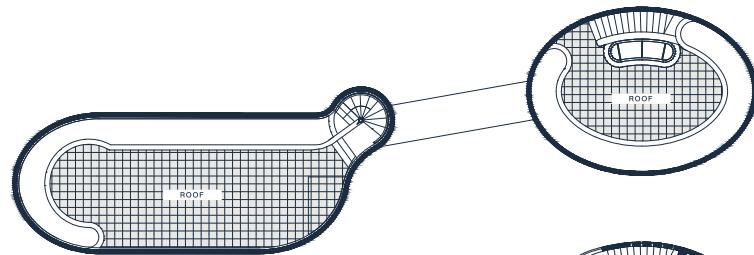




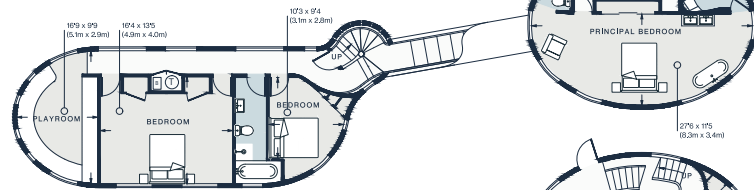
Crowning each turret is a contemplative roof terrace apiece; calming spaces to press pause without feeling overlooked. In fact, privacy is a defining feature of Blythe Road. Set behind electronic gates, the driveway and entrance are hidden from view of the road, with mature mulberry and fig trees lending a leafy, peaceful first impression.



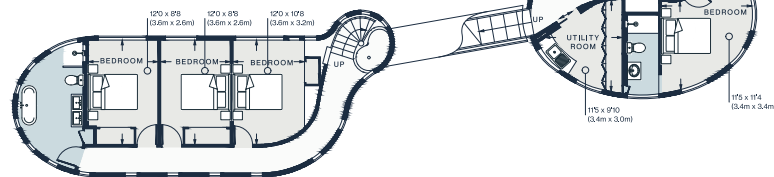




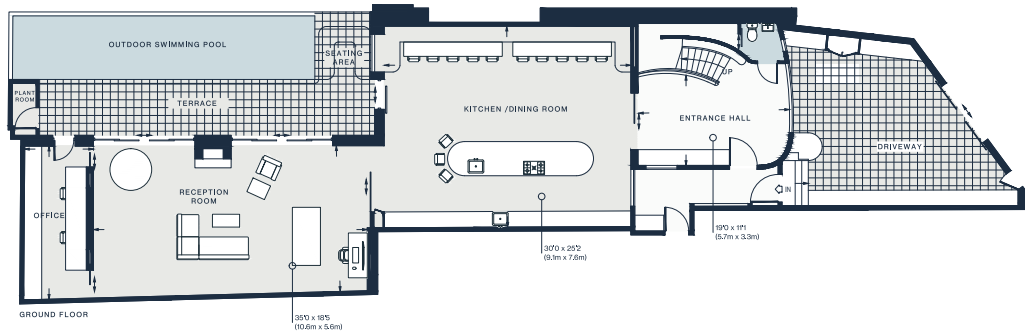
THIRD FLOOR



SECOND FLOOR



FIRST FLOOR



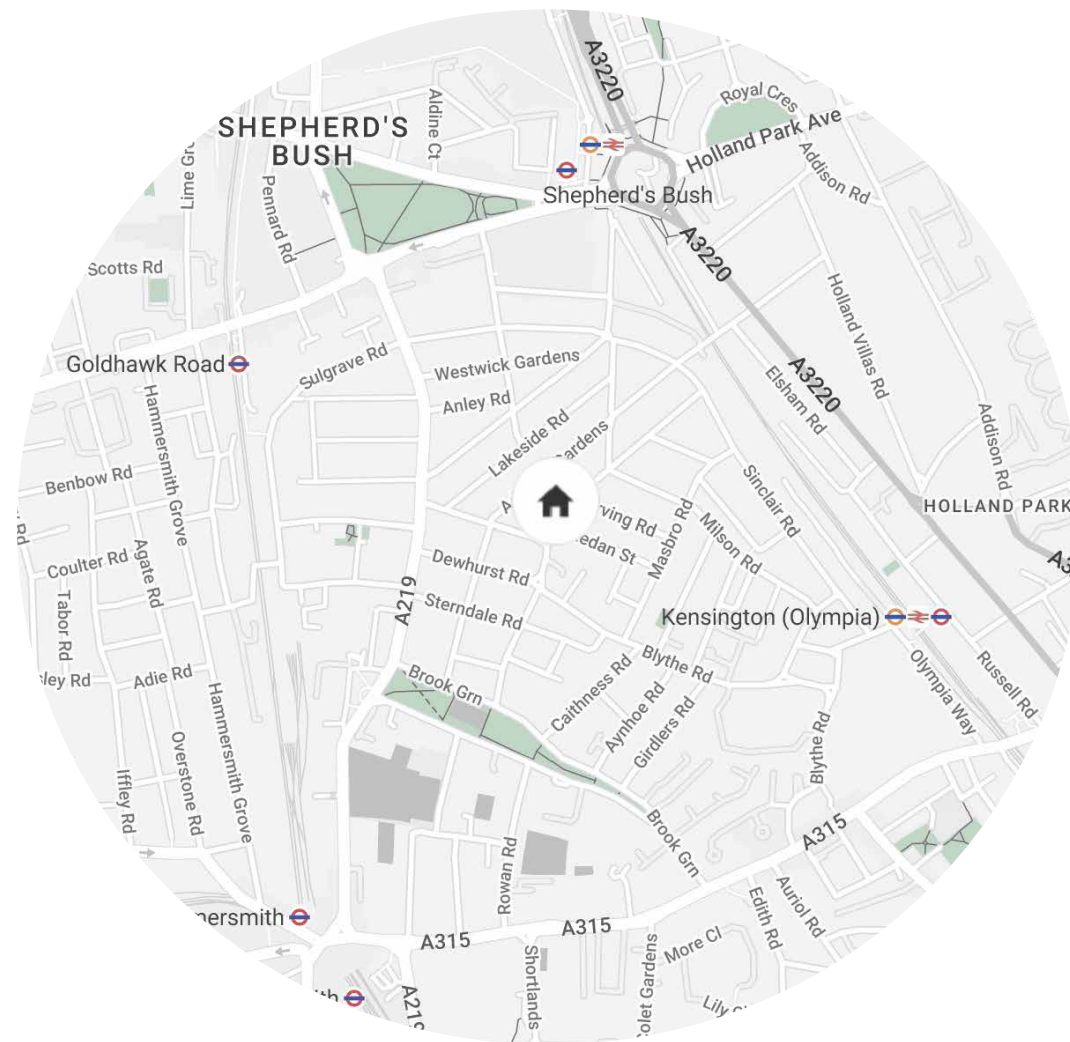
GROUND FLOOR

Approx. Gross Internal Area = 4,308 sq ft / 400.3 sq m
 Plant Room = 18 sq ft / 1.7 sq m
 Total = 4,326 sq ft / 402.0 sq m

Property Details

Unique curved design by architect Alex Michaelis
 Vast kitchen with restaurant-quality appliances
 Convivial reception room with wood burner
 Principal bedroom suite with standout marble bathtub
 Guest bedroom suite
 Five further bedrooms
 TV snug with curved banquet seating
 Terrace with heated swimming pool
 Two roof terraces
 Gated driveway and entrance
 Playful, family friendly features including a fireman's pool and slide
 London Borough of Hammersmith & Fulham

Approx. 4,326 sq ft / 402 sq m
 EPC - C
 Tenure: Freehold



Location

There's an inviting sense of community to Brook Green. On Saturdays, the neighbourhood comes out in force to shop for organic produce at the farmers' market. For an energetic start to the day, perfect your serve at Brook Green Tennis Courts then refuel with a coffee and pastry at Debbie Jo just down the road, picking up a salad for lunch from Awaken. Local drinking spots are in plentiful supply –from The Havelock and The Grove Tavern to The Brackenbury Wine Rooms. Come evening, dine out at The Bird in Hand or Le Petit Citron, then catch some live music at the Eventim Apollo or the 02 Shepherd's Bush Empire.

Kensington Olympia – 10 mins (District, London Overground)
Shepherd's Bush – 11 mins (Central)

Who — we are



Forward-thinkers in property, design and culture, we're an estate agency that hits refresh.

Domus Nova was born out of a desire to do things differently; to break the traditional agency model and focus on design-led homes in London and Ibiza, all while delivering the highest levels of personal service.

Our story starts in the nineties when we founded Notting Hill's first boutique agency – and we continue to open the doors to the most remarkable spaces, revealing them to our like-minded community.

We want to help you live better – and believe considered design can do that. That's why we remain committed to building on our legacy, in collaboration with BARNES International, an established agency with a market-leading presence in 22 countries.

Uniting our local insight and curated portfolio with BARNES International's expansive reach, we can facilitate the best opportunities in not only London and Ibiza, but also across Europe, the US and further afield – whether that's a château in the South of France, a penthouse in New York, or a chalet in the Swiss Alps.



DOMUS NOVA

Specialising in London
and Ibiza's design-led homes

Let's talk
020 7221 7817
sales@domusnova.com

The particulars above are a guide, not an offer or contract. Descriptions, photographs and plans are not statements or representations of fact. Measurements are approximate and not to scale. Prospective purchasers must verify the accuracy of the information within the particulars. Domus Nova does not give any representations or warranties; nor represent the Seller legally. Domus Nova has no liability, for any costs, losses or expenses incurred by the Seller or a prospective buyer relating to the sales and buying transaction.

Our Sales Disclaimer, trading names and privacy policy on how your data is processed and used is found in full on our website in our [Privacy Statement](#).

© 2025 Domus Nova in partnership with BARNES International. All rights reserved.

In partnership with
BARNES
INTERNATIONAL REALTY