

DOMUS NOVA

Blomfield Court

Maida Vale W9

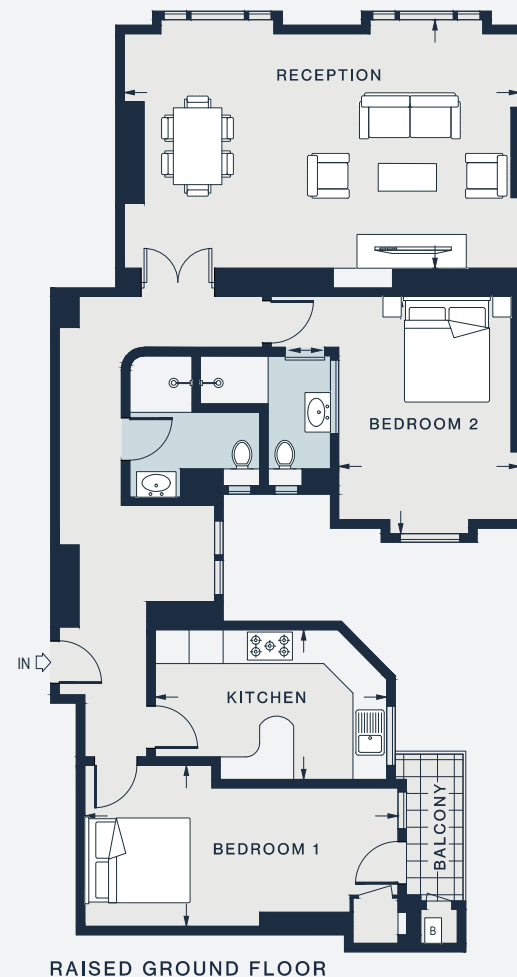
APPROXIMATE GROSS INTERNAL AREA

1,062 sq ft / 98.7 sq m

020 7727 1717

domusnova.com

LONDON | IBIZA



RAISED GROUND FLOOR

| | |
|--|--|
| RECEPTION 23'0 x 14'5 (7.0m x 4.4m) | BEDROOM 1 18'3 x 9'3 (5.5m x 2.8m) |
| KITCHEN 13'6 x 8'7 (4.1m x 2.6m) | BEDROOM 2 13'8 x 10'5 (4.1m x 3.2m) |

Approx. Gross Internal Area = 1062 sq ft / 98.7 sq m

Floor plans are for illustrative purposes only and not to scale. Compliant with RICS code of measuring practice. Furniture layouts are indicative only. This property may be furnished, part-furnished or unfurnished. Please refer to your agent for details.