

# DOMUS NOVA

Blenheim Crescent

Notting Hill W11

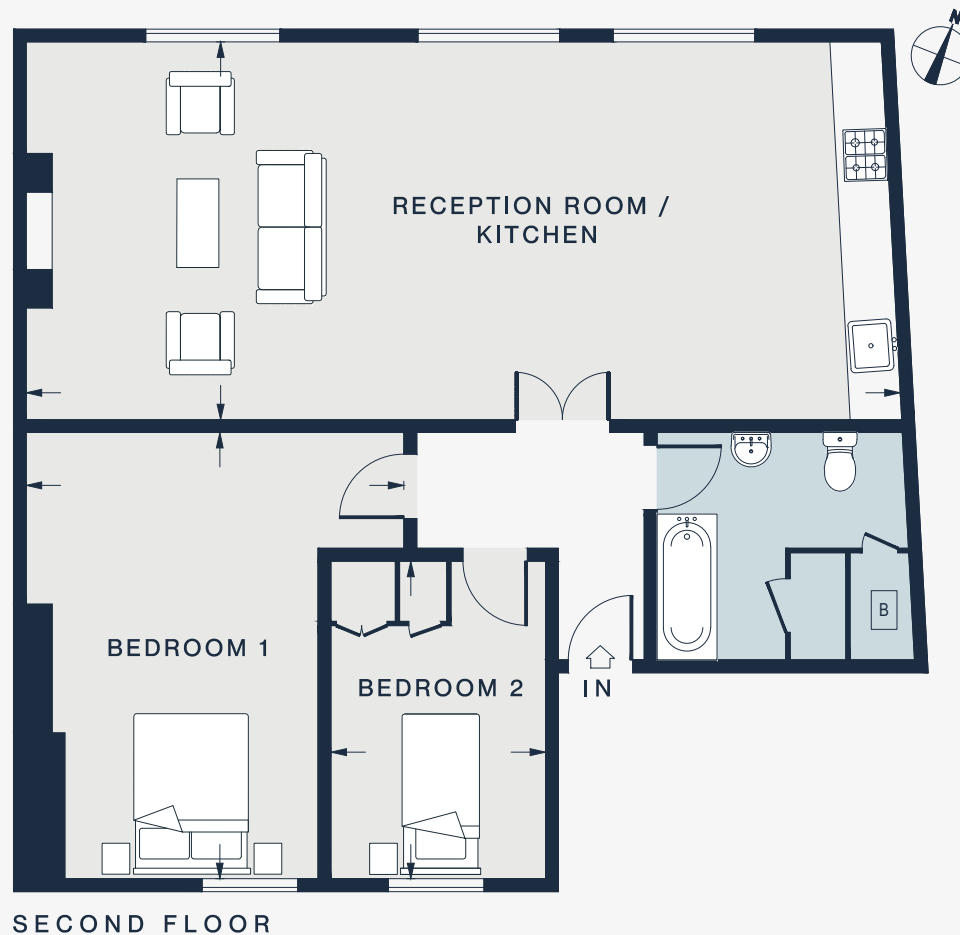
APPROXIMATE GROSS INTERNAL AREA

948 sq ft / 88.1 sq m

020 7221 7817

domusnova.com

LONDON | IBIZA



SECOND FLOOR

RECEPTION / KITCHEN

33'6 x 14'6 (10.2m x 4.4m)

BEDROOM 1

17'1 x 14'6 (5.2m x 4.4m)

BEDROOM 2

12'2 x 8'2 (3.7m x 2.5m)

Approx. Gross Internal Area = 948 sq ft / 88.1 sq m

Floor plans are for illustrative purposes only and not to scale. Compliant with RICS code of measuring practice.