

# DOMUS NOVA

Blenheim Crescent

Notting Hill W11


APPROXIMATE GROSS INTERNAL AREA

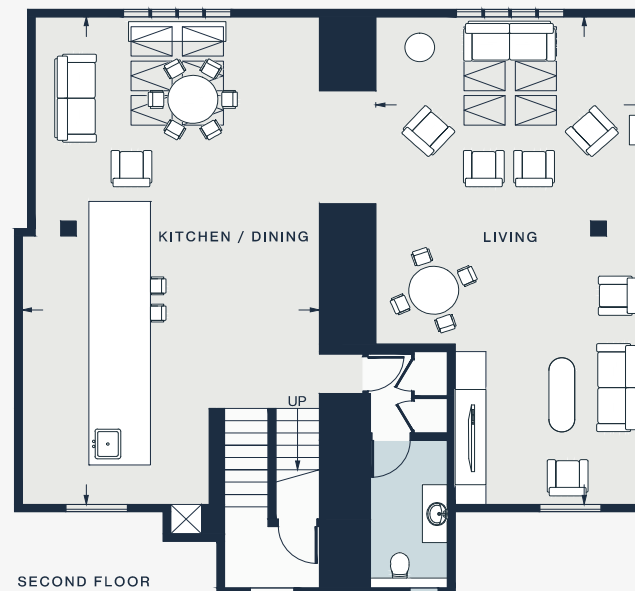
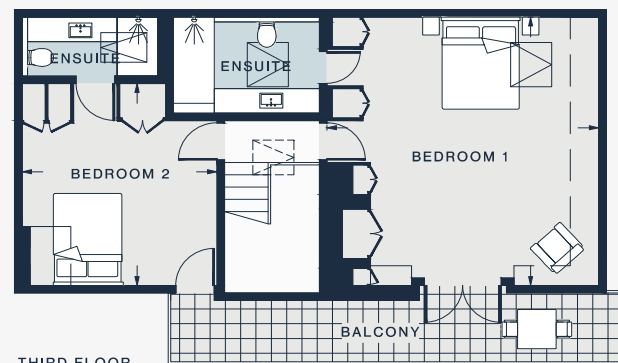
2,042 sq ft / 189.7 sq m

020 7727 1717

domusnova.com

LONDON | IBIZA

 = Reduced head height below 1.5m



KITCHEN / DINING ROOM

32'6 x 19'0 (9.9m x 5.8m)

LIVING ROOM

32'6 x 17'3 (9.9m x 5.2m)

BEDROOM1

17'11 x 17'5 (5.4m x 5.3m)

BEDROOM2

13'5 x 12'6 (4.1m x 3.8m)

Approx. Gross Internal Area = 2042 sq ft / 189.7 sq m

Floor plans are for illustrative purposes only and not to scale. Compliant with RICS code of measuring practice. Furniture layouts are indicative only. This property may be furnished, part-furnished or unfurnished. Please refer to your agent for details.