

DOMUS NOVA

Blenheim Crescent

Notting Hill W11

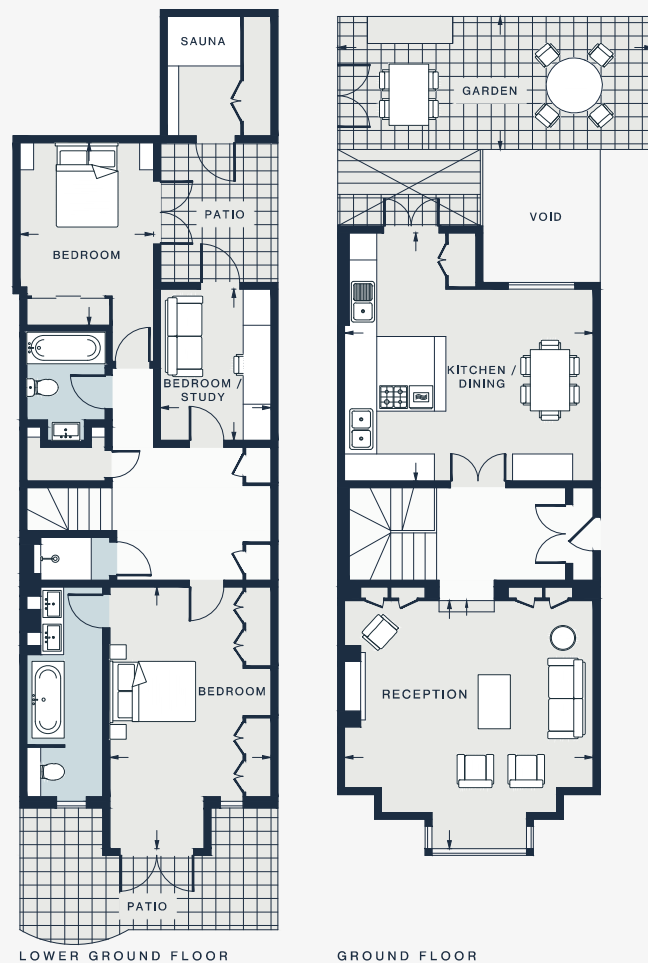
APPROXIMATE GROSS INTERNAL AREA

1,535 sq ft / 142.6 sq m

020 7727 1717

domusnova.com

LONDON | IBIZA



<p>RECEPTION</p> <p>17'9 x 17'6 (5.4m x 5.3m)</p>	<p>BEDROOM</p> <p>19'0 x 11'6 (5.8m x 3.5m)</p>	<p>BEDROOM / STUDY</p> <p>11'0 x 7'11 (3.3m x 2.4m)</p>
<p>KITCHEN / DINING</p> <p>18'1 x 17'10 (5.5m x 5.4m)</p>	<p>GARDEN</p> <p>23'0 x 8'9 (7.0m x 2.7m)</p>	<p>BEDROOM</p> <p>13'4 x 9'9 (4.1m x 2.9m)</p>

Approx. Gross Internal Area = 139.1 sq m / 1497 sq ft

Floor plans are for illustrative purposes only and not to scale. Compliant with RICS code of measuring practice. Furniture layouts are indicative only. This property may be furnished, part-furnished or unfurnished. Please refer to your agent for details.