

DOMUS NOVA



Bayswater Road W2
£3,950 p/w (Short Let)



Once an ode to Victorian grandeur, Bayswater Road now plays host to designer Elie Saab's vision of modern living. Intertwining innovation and tradition, interiors here feature state-of-the-art design and meticulous attention to detail.

From the onset, a considered lobby and concierge set a sophisticated tone. Ascend via lift to the fourth floor, where engineered oak floors compliment an understated colour palette. Thoughtfully enhanced with energy-efficient lighting, social spaces embody the prestige of the setting.

The heart of the home is a bespoke kitchen, a masterful fusion of form and function. Dark oak cabinetry and soft-closing drawers hide behind sleek, clean lines, while quartz countertops gleam below bronze mirrored splashbacks. State-of-the-art appliances – Miele ovens and an induction hob – elevate the culinary experience.

An imposing island serves as both a functional workspace and breakfast bar, while a separate utility room discreetly enhances practicality.

Furnished with pieces from Elie Saab's interior collection, the dining and reception space is fashioned for hosting. A marble-topped table stands as the centrepiece, while a Legacy sofa invites relaxation. Thoughtfully designed lighting – dimmable spotlights, overhead LEDs, and a bronze pillar lamp – allows for the perfect ambiance at any time of day. When the sun hits, head out glass doors to the south-facing terrace for views towards Hyde Park.

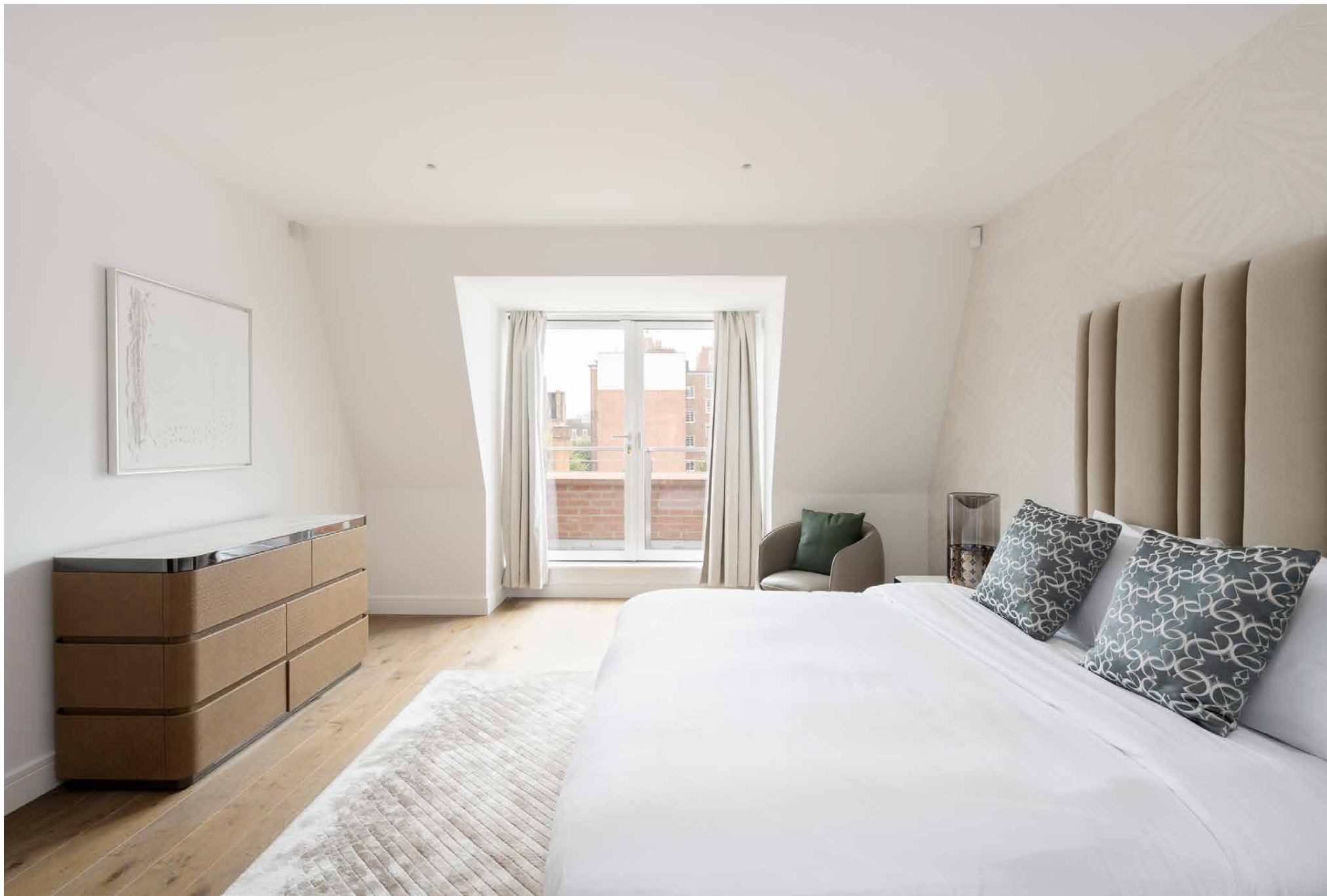




The principal bedroom embodies a sense of calm – think neutral tones layered with texture. To one side, glass doors open to a private balcony. To the other, custom-fitted wardrobes lead the way to an en suite bathroom. Heated tiles warm underfoot, while a deep bathtub and rainfall shower offer rejuvenation. Two further bedrooms continue a tranquil feel, with abstract artwork adding pops of colour. One is served by a sophisticated en suite, the other by a family bathroom.

Throughout the apartment, underfloor heating ensures warmth, while advanced climate control in the living room and bedrooms provides year-round comfort.







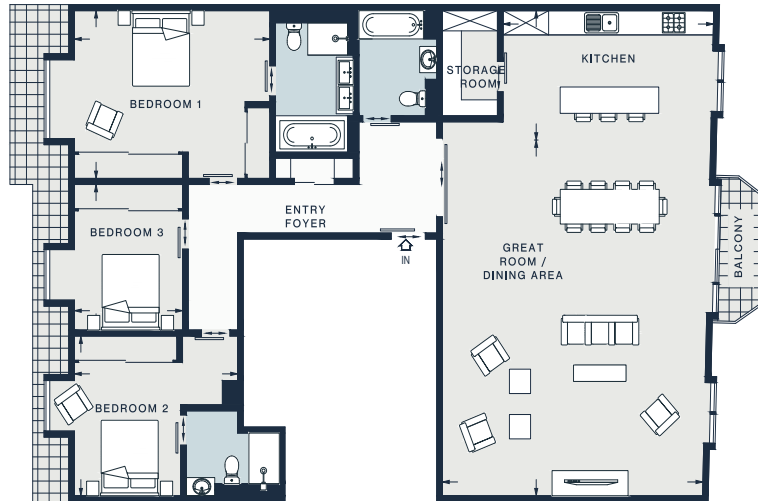












Property Details

Open-plan kitchen, dining and reception room
Principal bedroom suite
Guest bedroom suite
One further bedroom
Family bathroom
South-facing terrace
Balcony
Utility room
City of Westminster

Approx. 1852 sq ft / 172 sq m
EPC: B
Council Tax Band: H
Deposit = £15,800

GREAT ROOM/ DINING AREA

28'8 x 22'6 (8.7m x 6.8m)

BEDROOM 2

14'1 x 12'10 (4.3m x 3.9m)

BEDROOM 1

16'11 x 13'7 (5.1m x 4.1m)

KITCHEN

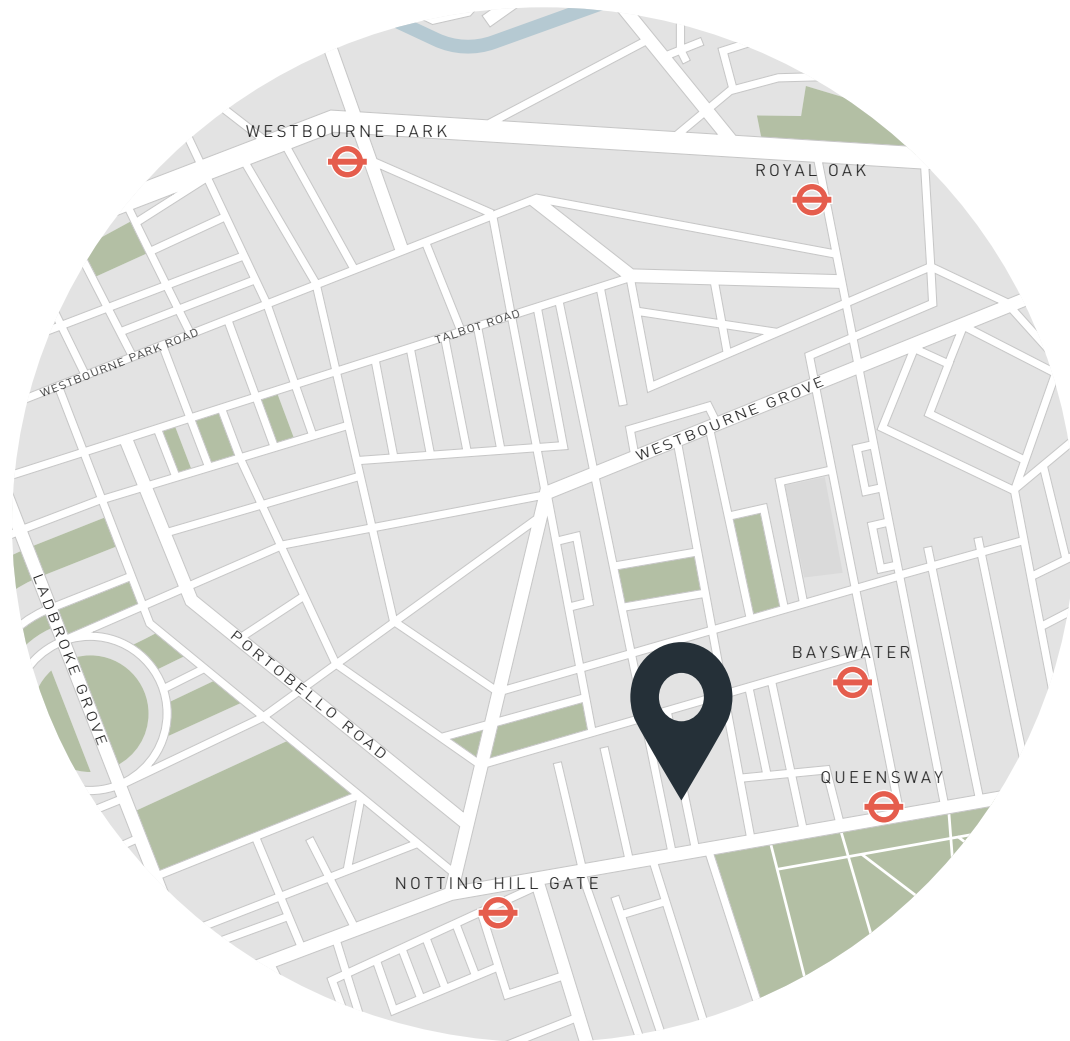
18'3 x 10'6 (5.5m x 3.2m)

BEDROOM 3

11'10 x 9'10 (3.6m x 3.0m)

Approx. Gross Internal Area = 1852 sq ft / 172 sq m

Floor plans are for illustrative purposes only and not to scale. Compliant with RICS code of measuring practice.
Furniture layouts are indicative only. This property may be furnished, part-furnished or unfurnished. Please refer to your agent for details.



Location

Caught between the buzz of Notting Hill and Bayswater, this distinguished road overlooks the lawns of Hyde Park. The area is replete with bars, restaurants, and entertainment of every form. For relaxation, the Six Senses Spa at the nearby Whiteley's development will be the UK's first. Start the day with a stroll through Kensington Gardens, before caffeinating at Guillam Coffee House. Brunch at Beam, then browse the boutiques along Westbourne Grove. Round off the day with dinner at The Park. Queensway station is less than five minutes' walk from your door, offering easy access into central London.

Queensway - 4 mins (Central)

Bayswater - 7 mins (Circle, District)

Specialising in London
and Ibiza's design-led homes

Let's talk

020 7727 1717

lettings@domusnova.com

domusnova.com

The property particulars are a guide not statements. Descriptions, photographs, and plans are for guidance and should be checked by the prospective tenant. The Property is offered "subject to contract and references". No warranties, representations, or Tenancy is given by Domus Nova. Expenses incurred by a prospective tenant will not be reimbursed if the Landlord withdraws prior to the Tenancy Agreement being signed, dated and exchanged and cleared funds received. Furniture and other items shown in a property at viewing may belong to a current tenant. The prospective tenant should verify in writing which fixtures and fittings forms part of the Tenancy. Our full lettings disclaimer together with trading names and our [Privacy Policy](#) is shown on our website

© Domus Nova 2024. All rights reserved.