

# DOMUS NOVA

Bathurst Mews

Bayswater W2

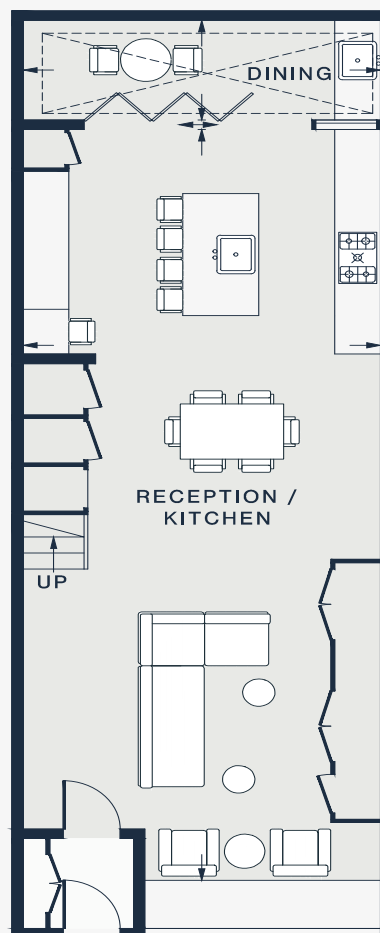
APPROXIMATE GROSS INTERNAL AREA

1,336 sq ft / 124.1 sq m

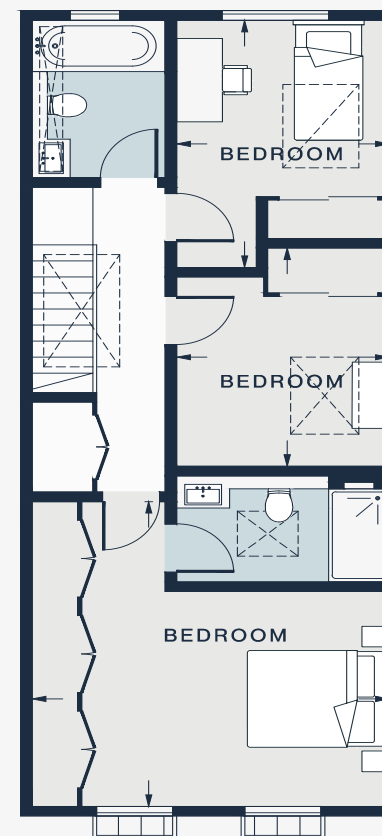
020 7221 7817

domusnova.com

LONDON | IBIZA



GROUND FLOOR



FIRST FLOOR

RECEPTION / KITCHEN  
38'4 x 15'3 (11.7m x 4.6m)

DINING  
15'3 x 5'1 (4.6m x 1.5m)

BEDROOM  
15'7 x 15'5 (4.7m x 4.7m)

BEDROOM  
12'7 x 9'1 (3.8m x 2.7m)

BEDROOM  
11'2 x 9'2 (3.4m x 2.8m)

Approx. Gross Internal Area = 1,336 sq ft / 124.1 sq m

Floor plans are for illustrative purposes only and not to scale. Compliant with RICS code of measuring practice.