

DOMUS NOVA



Bassett Road W10
£3,000 p/w - Short let



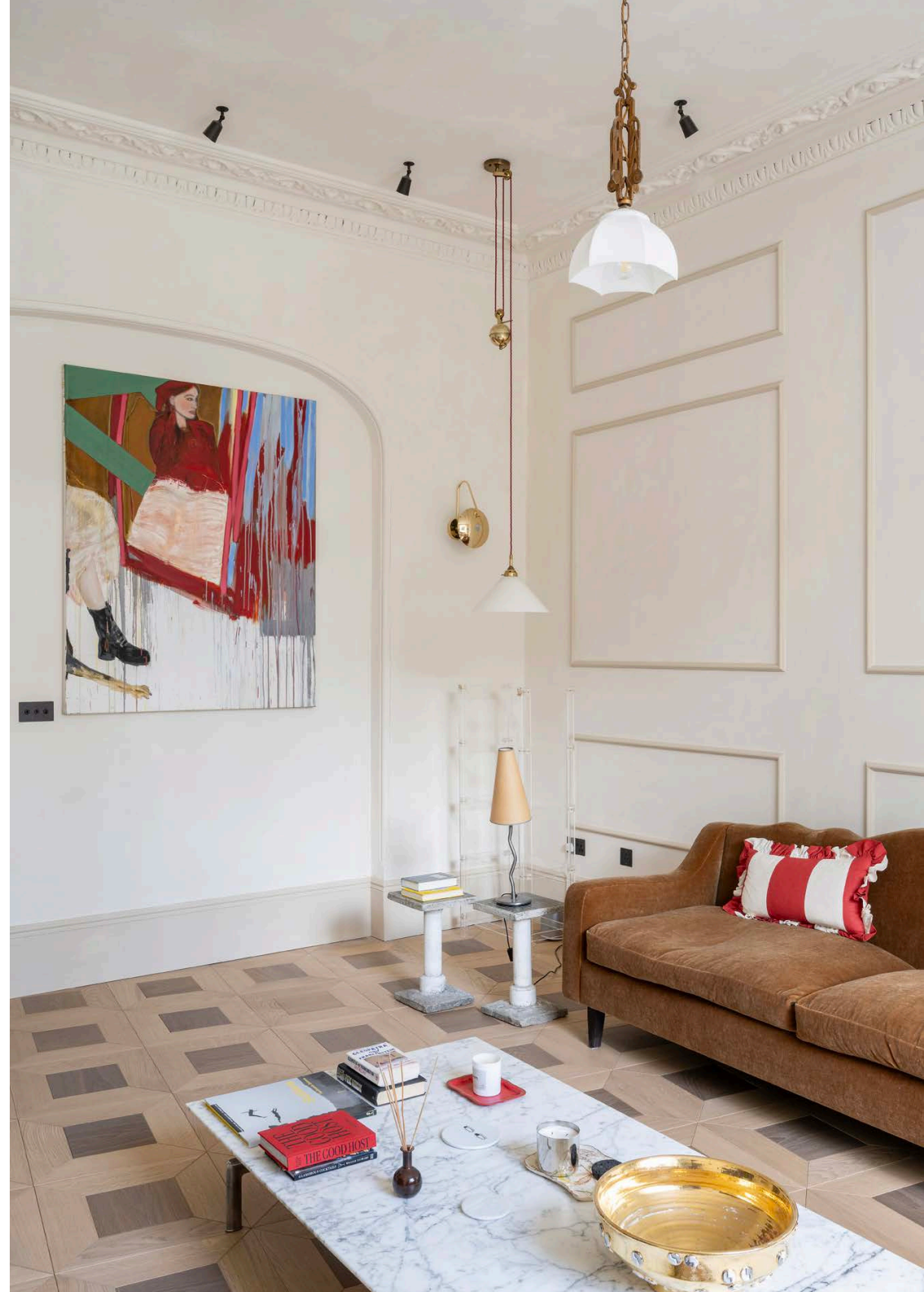
Drawing together heritage proportions and uplifting design, this three-bedroom apartment for rent exudes sophistication inside and out.

Beyond a pristine blonde-brick Georgian terrace, this lateral three-bedroom North Kensington home depicts an effortless dialogue between past and present.

At the home's social heart, a carefully crafted kitchen takes one side of the home's double-fronted plan. A tall sash window stretches up lofty period proportions, bringing an animated air to cooking, dining or socialising. Calacatta marble splashbacks, volcanic rock counters and a bespoke extractor form a stylish culinary backdrop, while state-of-the-art appliances and a double oven allow for adventurous cooking. Linen chandeliers add an ambient touch to the breakfast bar – a relaxed spot to lounge or linger with brunch.

Ornate cornicing follows through to the reception room, where a south-west-facing window washes natural light across bespoke wooden floors. Abstract art by Ginette Fiandaca styles a canvas of muted earthy tones, while a floral George Smith sofa offers a setting to admire the black marble fireplace. Nestled between bedrooms to the opposite side, a cosy sky-lit room is a versatile space ideal as a home office or kids snug.







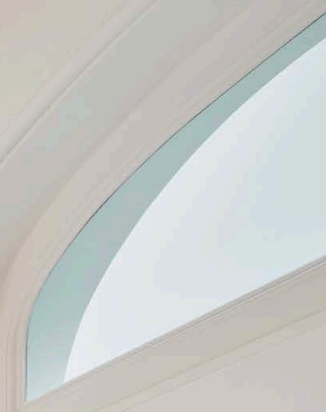




Elsewhere, three bedrooms are styled with calming colour palettes. Characterised by dusky hues, the soothing principal bedroom showcases curved archways, handmade bespoke storage and a super-King sized bed. Beyond an open archway, an en suite bathroom features a generous bathtub and dual vanity. Tranquil tones continue through two further bedrooms, each served by shower rooms with Mediterranean-inspired design – think Zellige tiles, concrete sinks and micro-cement flooring.

The home further benefits from underfloor heating, new boilers and entirely updated plumbing and electrics throughout.









NEOM

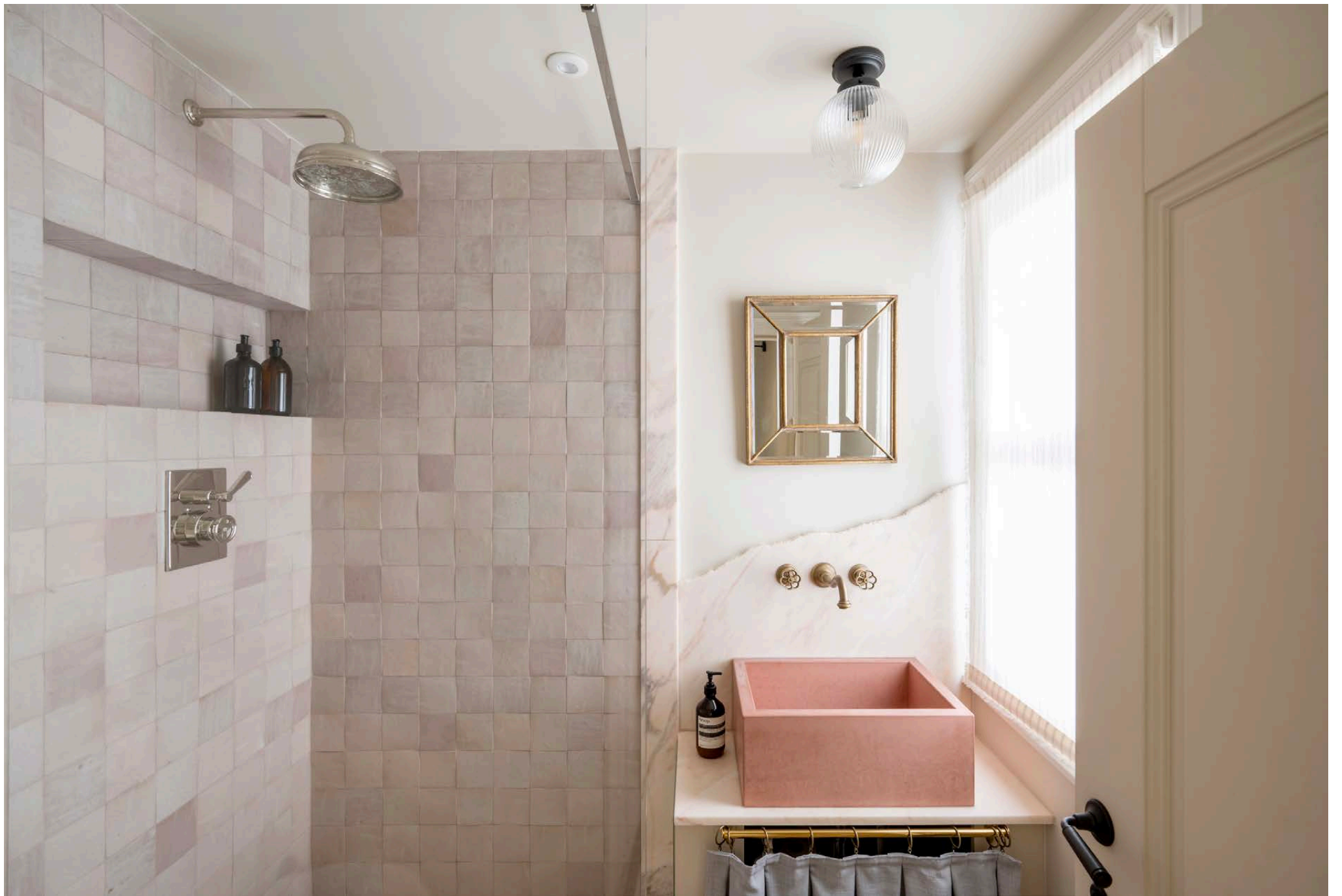
WILDMITH

WILDMITH

CHANEL

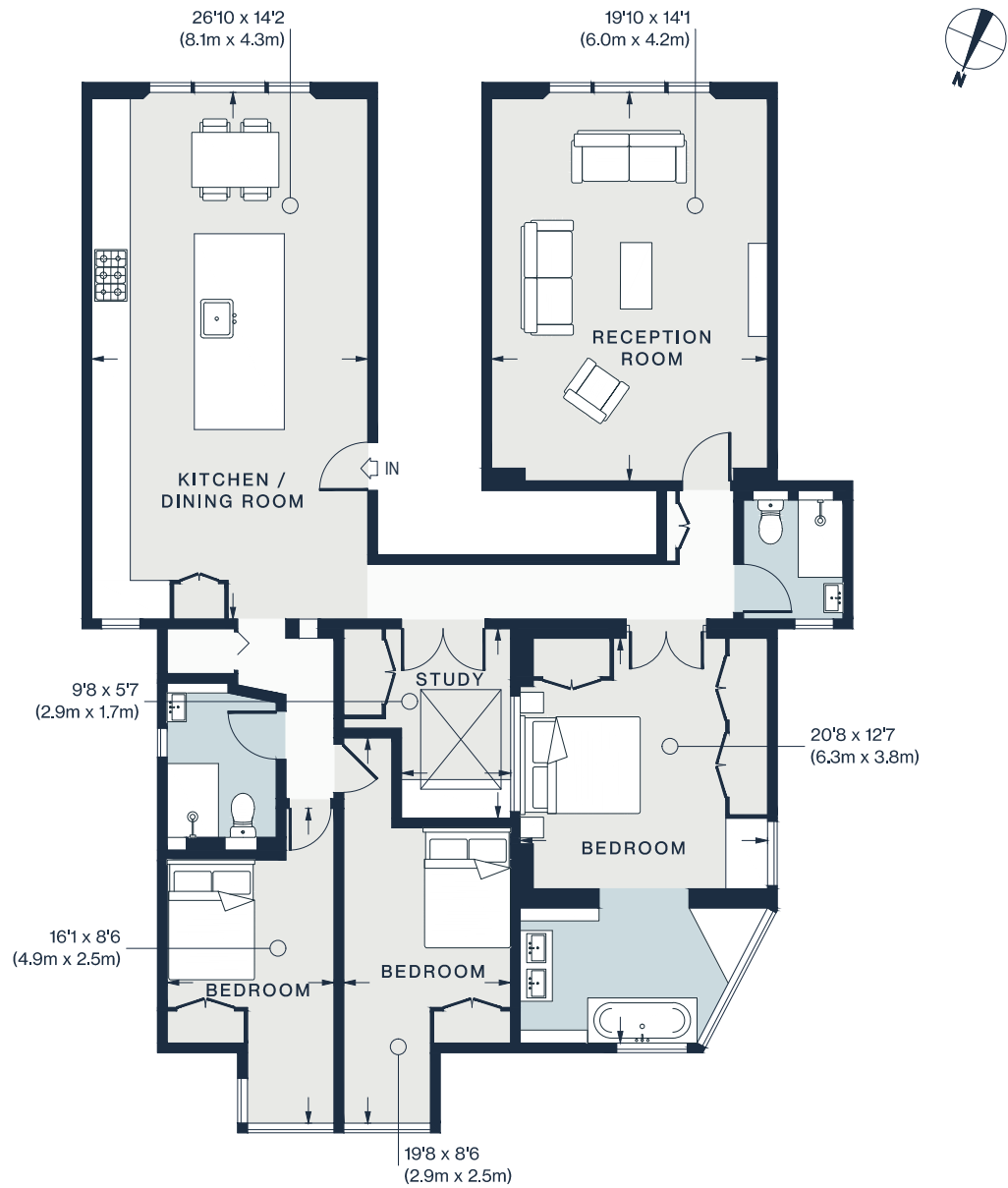
WILDMITH SKIN







Resident permit holders only
P
Mon-Fri
8.30 am - 6.30 pm
Saturday
8.30 am - 1.30 pm



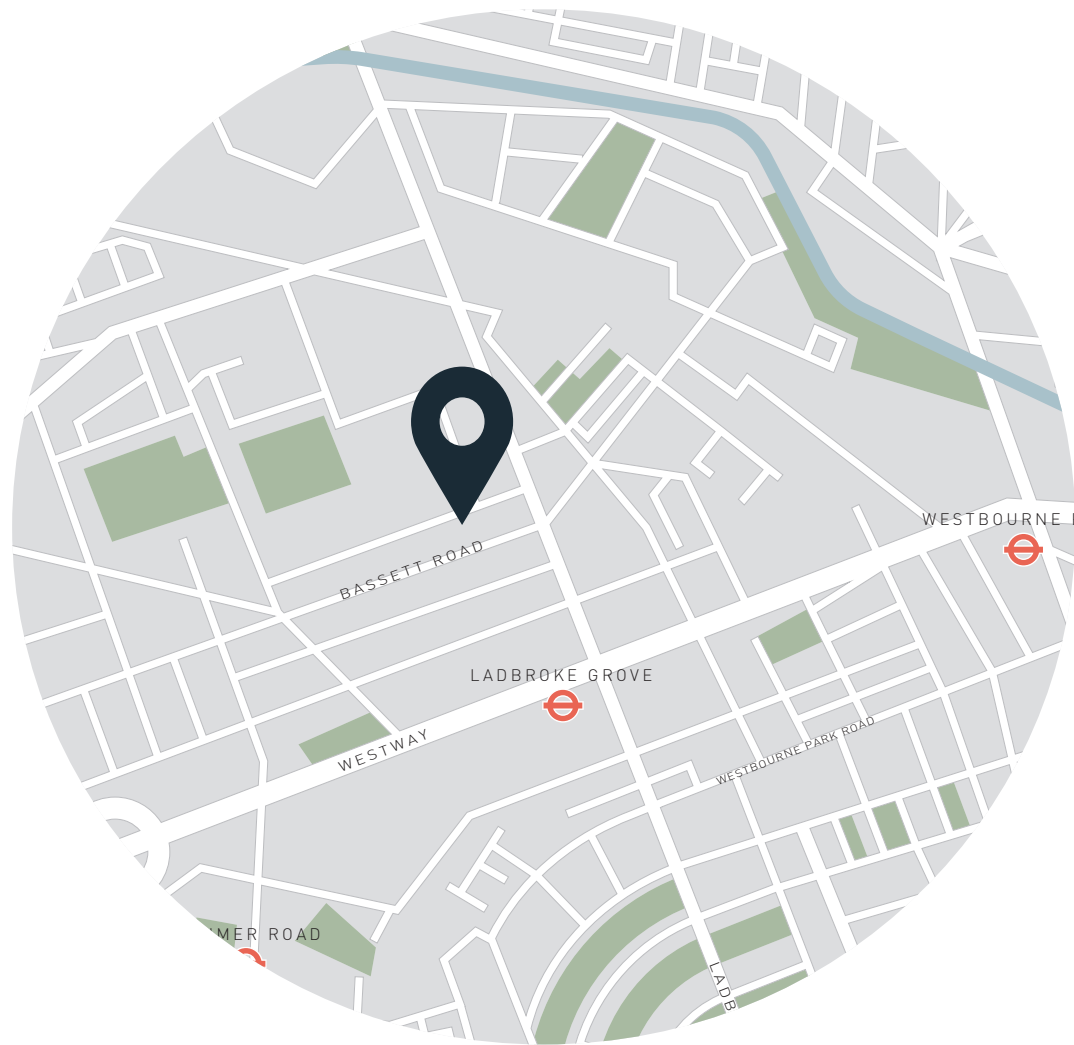
GROUND FLOOR

Approx. Gross Internal Area = 1,450 sq ft / 134.7 sq m

Property Details

Open-plan kitchen and dining room
 Reception room
 Versatile study
 Principal bedroom suite
 Two further bedrooms
 Two shower rooms
 Royal Borough of Kensington & Chelsea
 Approx 1,450 sq ft / 134.7 sq m

Council Tax Band - D
 EPC - pending
 Deposit Payable - £12,000



Location

A sought-after North Kensington setting, Bassett Road places you moments from prime Notting Hill. Visit the famous market in the mornings, then spend time discovering the area's best-kept secrets. Layla's Bakery is only a six-minute walk away or stop at Golborne Deli to grab groceries. Rub elbows with the well-heeled at three-Michelin-starred Core by Clare Smyth or head to Gold for a late-evening tipple. Westbourne Grove is lined with independent boutiques to keep you busy or Ladbroke Grove station – reached in three minutes – can take you wherever you need to go.

Ladbroke Grove - 5 mins

Specialising in London
and Ibiza's design-led homes

Let's talk

020 7727 1717

lettings@domusnova.com

domusnova.com

The property particulars are a guide not statements. Descriptions, photographs, and plans are for guidance and should be checked by the prospective tenant. The Property is offered "subject to contract and references". No warranties, representations, or Tenancy is given by Domus Nova. Expenses incurred by a prospective tenant will not be reimbursed if the Landlord withdraws prior to the Tenancy Agreement being signed, dated and exchanged and cleared funds received. Furniture and other items shown in a property at viewing may belong to a current tenant. The prospective tenant should verify in writing which fixtures and fittings forms part of the Tenancy. Our full lettings disclaimer together with trading names and our [Privacy Policy](#) is shown on our website