

# DOMUS NOVA



Bassett Road W10  
£535,000

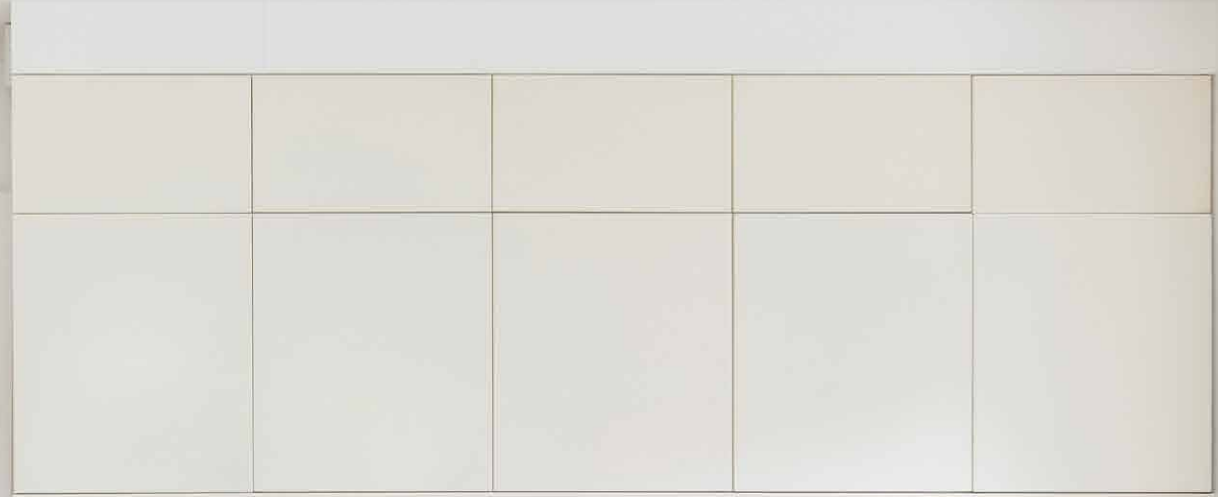


Minimalist interiors and calming tones characterise this one-bedroom lateral apartment for sale in North Kensington.

Behind a pristine red-brick façade, modern interventions create contemporary character in this lower ground floor apartment.

Honey-toned wooden floors lead you through a sliding door into the open-plan kitchen and reception room, awash with natural light from twin sash windows. Styled with a pared-back colour palette, there's a tranquil ambiance to the seating area. Across the opposing wall, a sleek cooking space enhances the open feel of the room, its cream cabinetry melding with a smooth spot-lit backsplash. Subtly zoned, a recessed ceiling adds visual interest to a dedicated dining area.





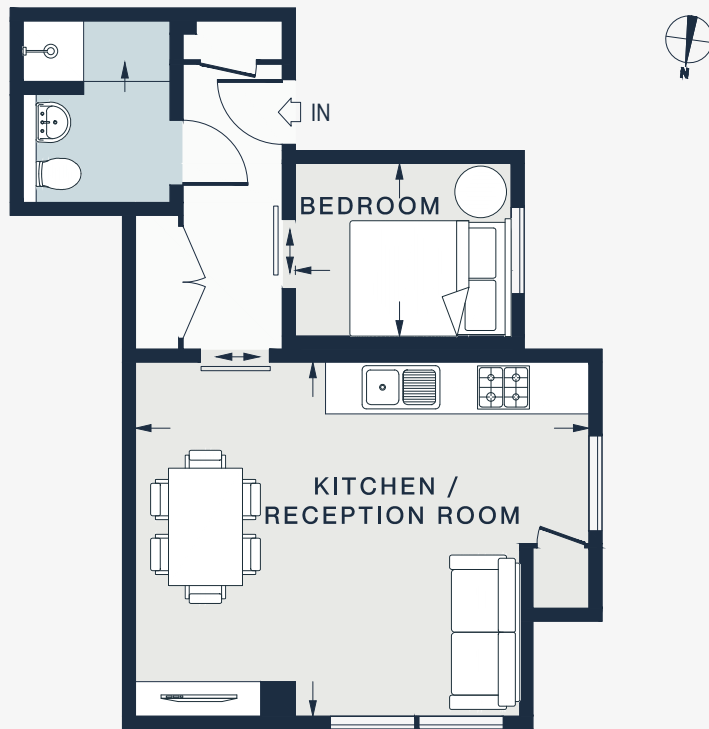


Neutral hues follow into the bedroom, where a minimalist interior style draws focus to the calming ambiance. At the entrance, floor-to-ceiling integrated wardrobes create sophisticated space for storage. Serving this bedroom – a stylish shower room with light grey tiles and sleek chrome accents.

The apartment also features a non-demised patio space, plus a picturesque communal garden.







LOWER GROUND FLOOR

BEDROOM  
8'2 x 6'7 (2.5m x 2.0m)

KITCHEN / RECEPTION  
17'1 x 13'5 (5.2m x 4.1m)

Approx. Gross Internal Area = 374 sq ft / 34.7 sq m

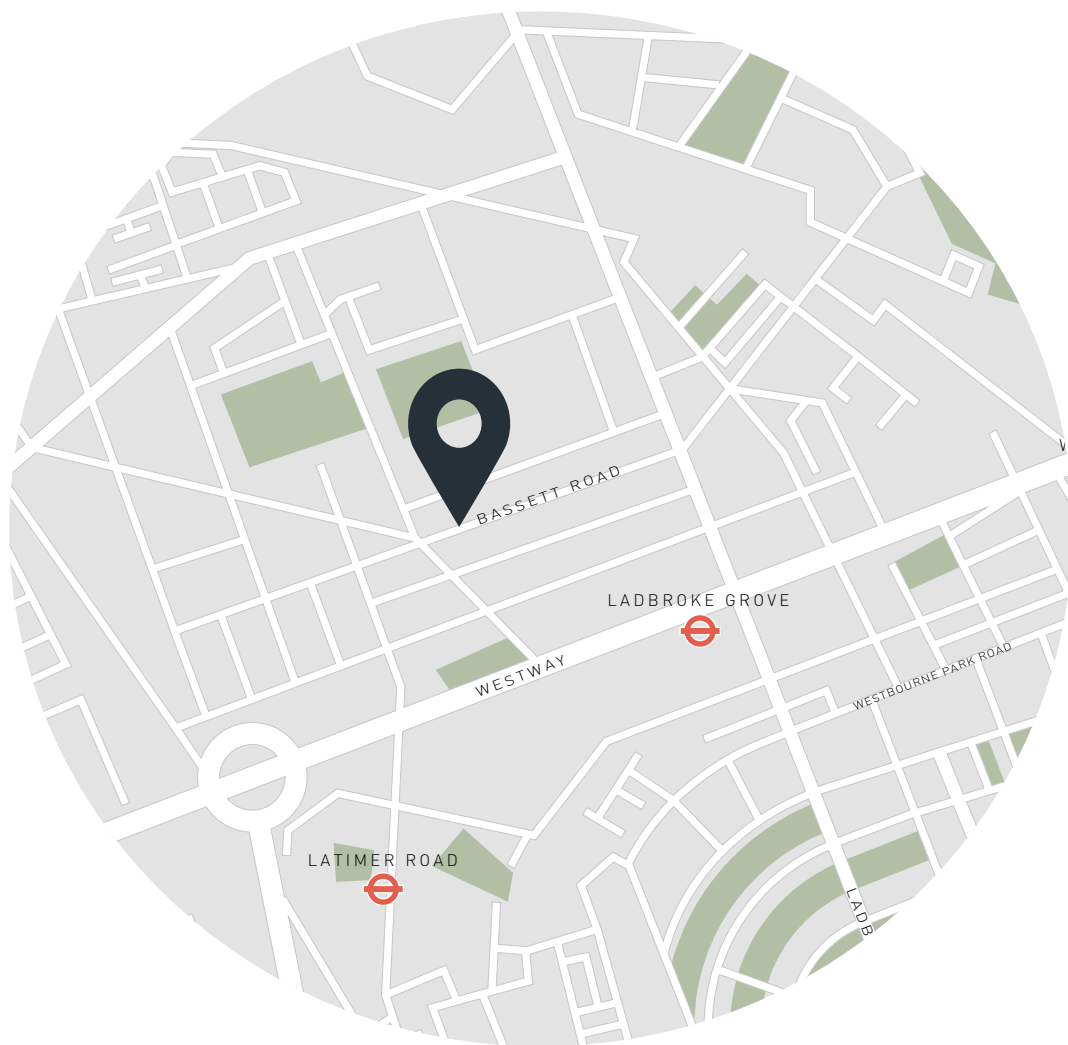
Floor plans are for illustrative purposes only and not to scale. Compliant with RICS code of measuring practice.

## Property Details

- Open-plan kitchen and reception room
- Principal bedroom
- Shower room
- Non-demised patio space
- Communal garden
- Royal Borough of Kensington & Chelsea

- Approx. 374 sq ft / 34.7 sq m
- EPC - D
- Council tax - C
- Share of freehold - circa 972 years
- Ground rent - £1 per annum
- Annual service charge - £1,065.60





## Location

With its leafy streets and period architecture, there's a welcoming feel to North Kensington. Head over to Golborne Road and start your day with a pastry from Portuguese favourite Lisboa. For eclectic endeavours, Portobello Road is just a ten minute walk away – offering endless opportunities for antique browsing and café hopping. For upmarket boutiques, Westbourne Grove is your go to. Try a traditional roast and enjoy live music at Laylow, or head to Core by Clare Smyth for three-Michelin-starred fine dining. Complete your evening with a film at the Electric Cinema.

Ladbroke Grove – 9 mins (Circle, Hammersmith & City)

Latimer Road – 6 mins (Circle, Hammersmith & City)

Specialising in London  
and Ibiza's design-led homes

Let's talk  
020 7221 7817  
sales@domusnova.com  
domusnova.com

The particulars above are a guide, not an offer or contract. Descriptions, photographs and plans are not statements or representations of fact. Measurements are approximate and not to scale. Prospective purchasers must verify the accuracy of the information within the particulars. Domus Nova does not give any representations or warranties, nor represent the Seller legally. Domus Nova has no liability, for any costs, losses or expenses incurred by the Seller or a prospective buyer relating to the sales and buying transaction.

Our Sales Disclaimer, trading names and privacy policy on how your data is processed and used is found in full on our website in our [Privacy Statement](#).

© Domus Nova 2023. All rights reserved.