

DOMUS NOVA



Bassett Road W10
£1,695,000



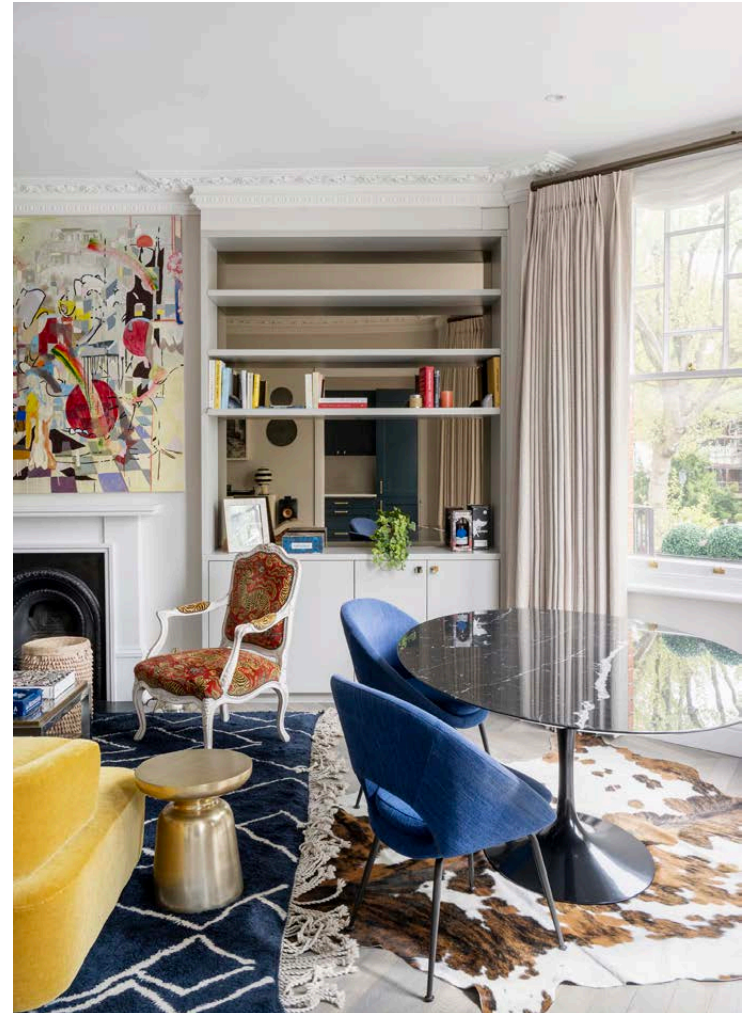
This two-bedroom apartment for sale in North Kensington is a hive of characterful design decisions.

Behind a striking redbrick façade with ornamental masonry, this head-turning home pairs pristine finishes with distinguished, contemporary design. The apartment unfolds across the first floor of an end-of-terrace townhouse. Drawing on original features, period charm converges with a modern aesthetic.

An entranceway dressed in blueberry tones opens into the generous reception and dining room. A south-facing bay window invites sunlight into the space to enliven considered details. A dark fireplace is flanked by bespoke joinery with mirrored glass. Concealed lighting hits a moody note. Above, ornate corning frames the ceiling white an orb chandelier crowns the space.

Hardwood chevron flooring flows into the kitchen, which features ocean-blue shaker-style cabinetry and stone worktops. Integrated appliances include a concealed fridge and a slimline wine cooler. This space also leads out to the home's balcony which overlooks the leafy street below.







Dual sash windows illuminate the calming principal bedroom suite. Grounded by organic tones, the space is defined by a Jungle-themed feature wall. A bank of fitted wardrobes provides ample storage space. Its en suite bathroom enjoys brushed brass fittings and a walk-in rainfall shower.

A sense of stillness has been curated within the guest bedroom. A large sash window frames verdant views. Meanwhile, upholstered cabinetry, incorporating an integrated headboard, stretches over the bed space. This bedroom is served by a family bathroom with geometric wall tiles and a bathtub with an integrated rainfall shower.

















FIRST FLOOR

RECEPTION / DINING ROOM

22'8 x 14'7 (6.9m x 4.4m)

KITCHEN

11'3 x 6'9 (3.4m x 2.0m)

BEDROOM 1

16'3 x 14'11 (4.9m x 4.5m)

BEDROOM 2

11'1 x 9'4 (3.4m x 2.8m)

Approx. Gross Internal Area = 987 sq ft / 91.7 sq m

Floor plans are for illustrative purposes only and not to scale. Compliant with RICS code of measuring practice.

Property Details

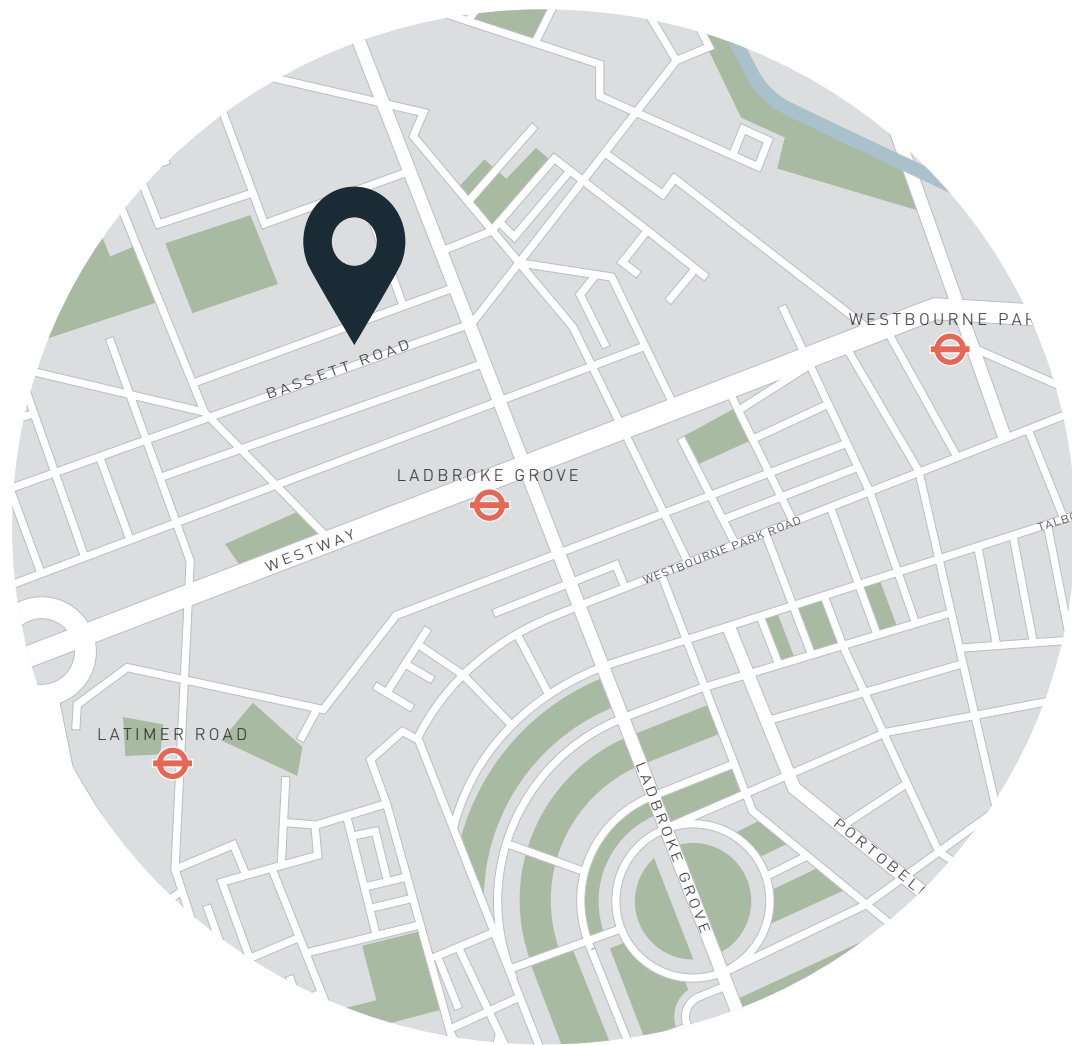
- Reception and dining room
- Separate kitchen
- Balcony
- Principal bedroom suite
- Guest bedroom
- Family bathroom
- Fitted storage
- Royal Borough of Kensington & Chelsea

Approx. 987 sq ft / 91.7 sq m

EPC - C

Tenure: Share of Freehold

Service charge: £3000 pa



Location

Bassett Road is a quiet, tree-lined street a stone's throw from the boutiques and brunch spots of Notting Hill. Start your day at Adriana's Café & Eatery, moments from your doorstep, then head to Westbourne Grove for its fashion boutiques or Portobello Road for curated vintage items. Dine at upscale Indian restaurant Empire Empire and have a nightcap at the Pelican on the way home. Closer to home, Golborne Road is the home of antiques shops and independent eateries. Don't miss Straker's or Caia. At the weekend, absorb some culture at the Museum of Brands or stroll to Holland Park.

Latimer Road – 7 mins (Circle, Hammersmith & City)

Specialising in London
and Ibiza's design-led homes

Let's talk
020 7221 7817
sales@domusnova.com
domusnova.com

The particulars above are a guide, not an offer or contract. Descriptions, photographs and plans are not statements or representations of fact. Measurements are approximate and not to scale. Prospective purchasers must verify the accuracy of the information within the particulars. Domus Nova does not give any representations or warranties; nor represent the Seller legally. Domus Nova has no liability, for any costs, losses or expenses incurred by the Seller or a prospective buyer relating to the sales and buying transaction.

Our Sales Disclaimer, trading names and privacy policy on how your data is processed and used is found in full on our website in our [Privacy Statement](#).

© Domus Nova 2024. All rights reserved.