

# DOMUS NOVA



Barrowgate Road, W4  
£4,000,000





On a leafy residential street in Chiswick, this three-storey home by architect Abraham Sandoval balances expressive contemporary design with considered family-orientated features – from off-street parking to generous living spaces and a versatile garden annex and gym.

The ground floor is defined by a sweeping open-plan configuration, where polished Italian ceramic flooring and a muted colour palette channel light through to the heart of the home. The Leicht kitchen combines functionality with finesse. Matte taupe cabinetry and gold hardware, are offset by Ice Black Compac quartz worktops and a clean-lined white glass splashback. Gaggenau appliances are seamlessly integrated, while overhead, ornate chandeliers lend a touch of opulence. A bespoke window seat below the front-facing window offers an inviting spot for a morning coffee.

















A set of sliding glass doors lead into the living room – a bright space animated by twin skylights, and a wall lined with bespoke shelving and cabinetry. Adjacent, Fineline sliding doors blur the boundary between inside and out, opening onto an immaculate patio. At the opposite end of this open-plan expanse, a dining area can comfortably accommodate eight. A dark marble fireplace creates a focal point, with herringbone flooring and dual-aspect glazing adding to the sense of proportion.

The home's private garden is equally refined. Timber fencing provides privacy, while the RAK-tiled terrace and salmon-hued flowerbeds bring softness and structure. A stepping-stone path leads to a striking wood-clad outbuilding – part wellness hideaway, part living space. One half houses a fully equipped gym and sauna; the other features a bespoke kitchen and guest bedroom, making it ideal for visitors or remote working.



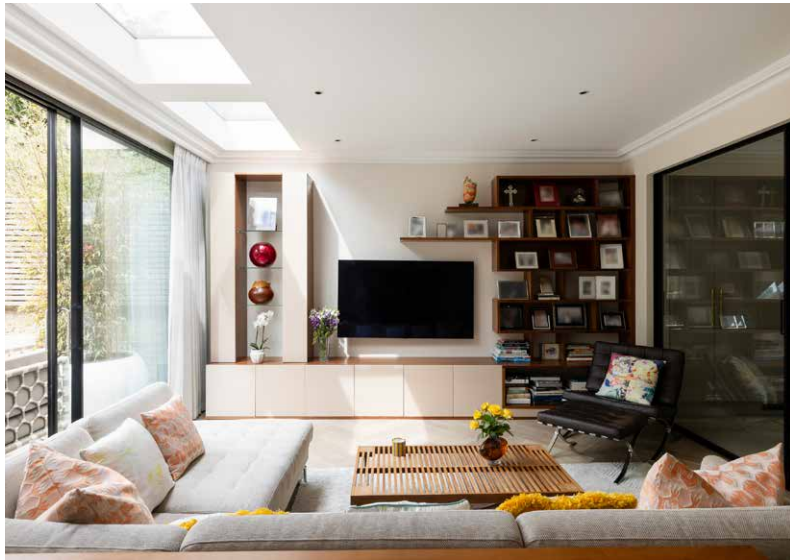




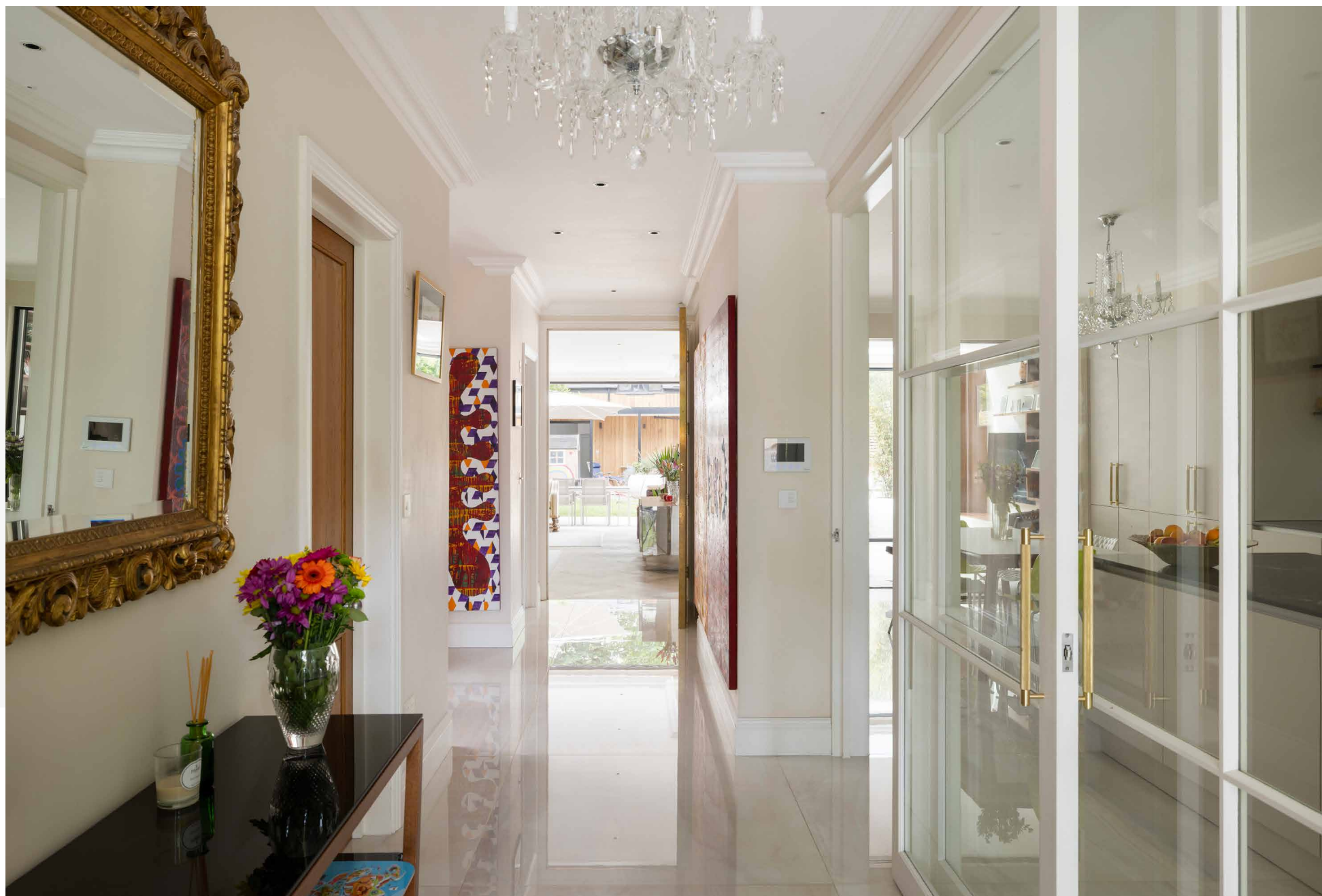
























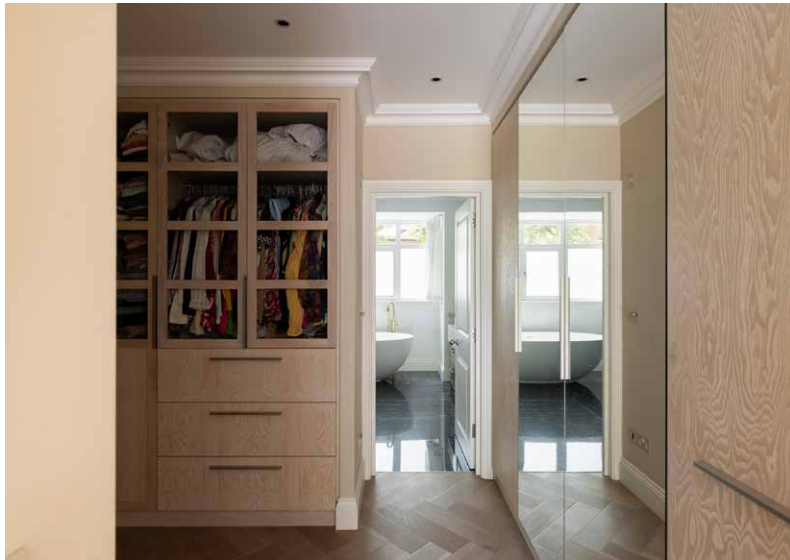
Back inside, the upper floors are devoted to rest and rejuvenation. The principal suite is a serene sanctuary, complete with sliding glass doors that open onto garden views and invite natural light to flood the space. A dressing room features full-height mirrors and abundant storage, while the adjoining en suite blends indulgence with sophistication: think Crosswater brassware, dark-veined floor tiles and a freestanding bathtub poised in a bay window.

Two further guest suites occupy the first floor, each with its own bathroom and distinct character – one enjoys garden-facing French doors. A skylit staircase ascends to the top floor, where two additional bedrooms are bathed in light, their cast-iron radiators and minimalist aesthetic evoking quiet charm. A family bathroom serves this level, finished with RAK ceramic tiles and a freestanding bathtub.









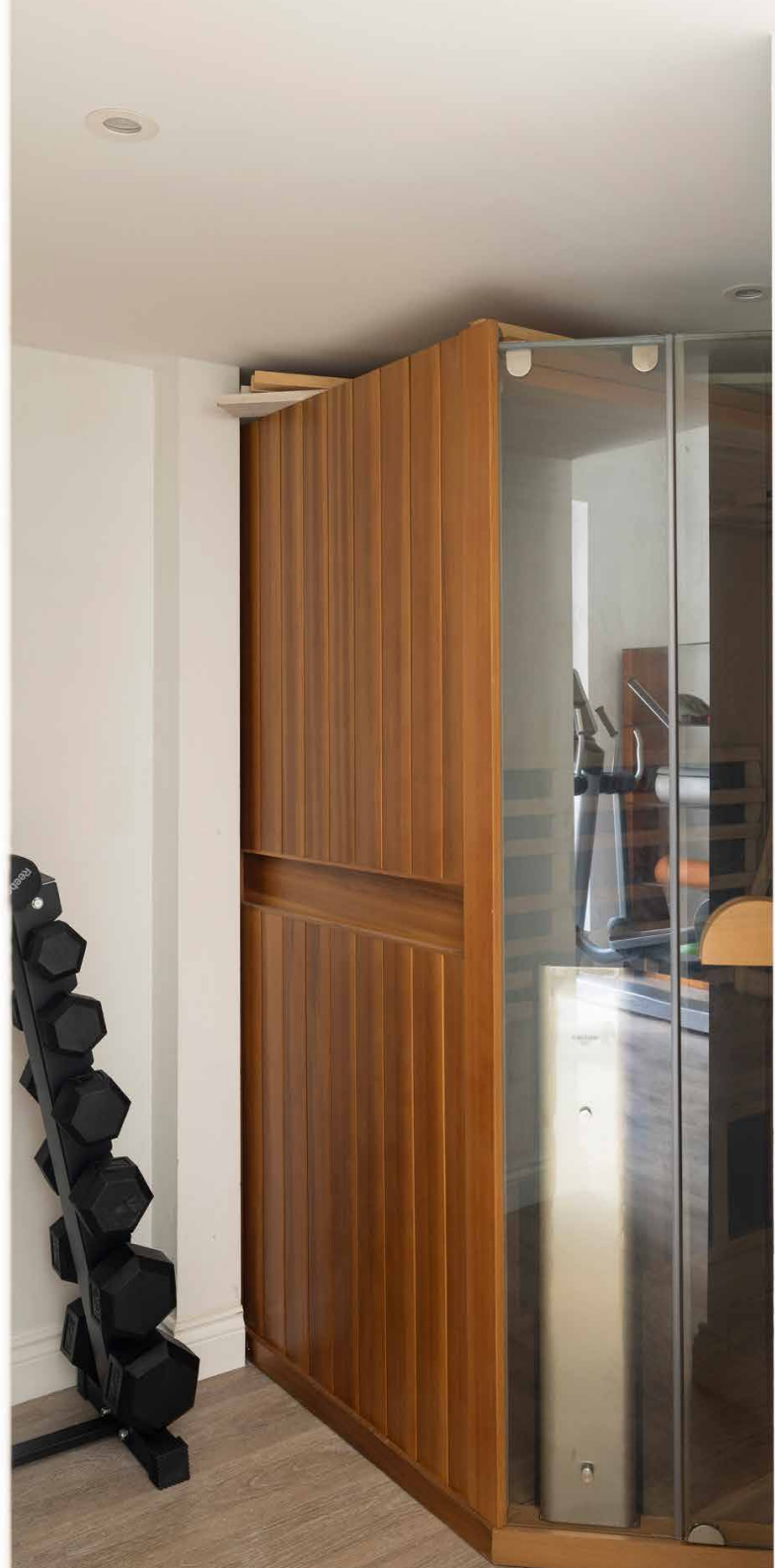




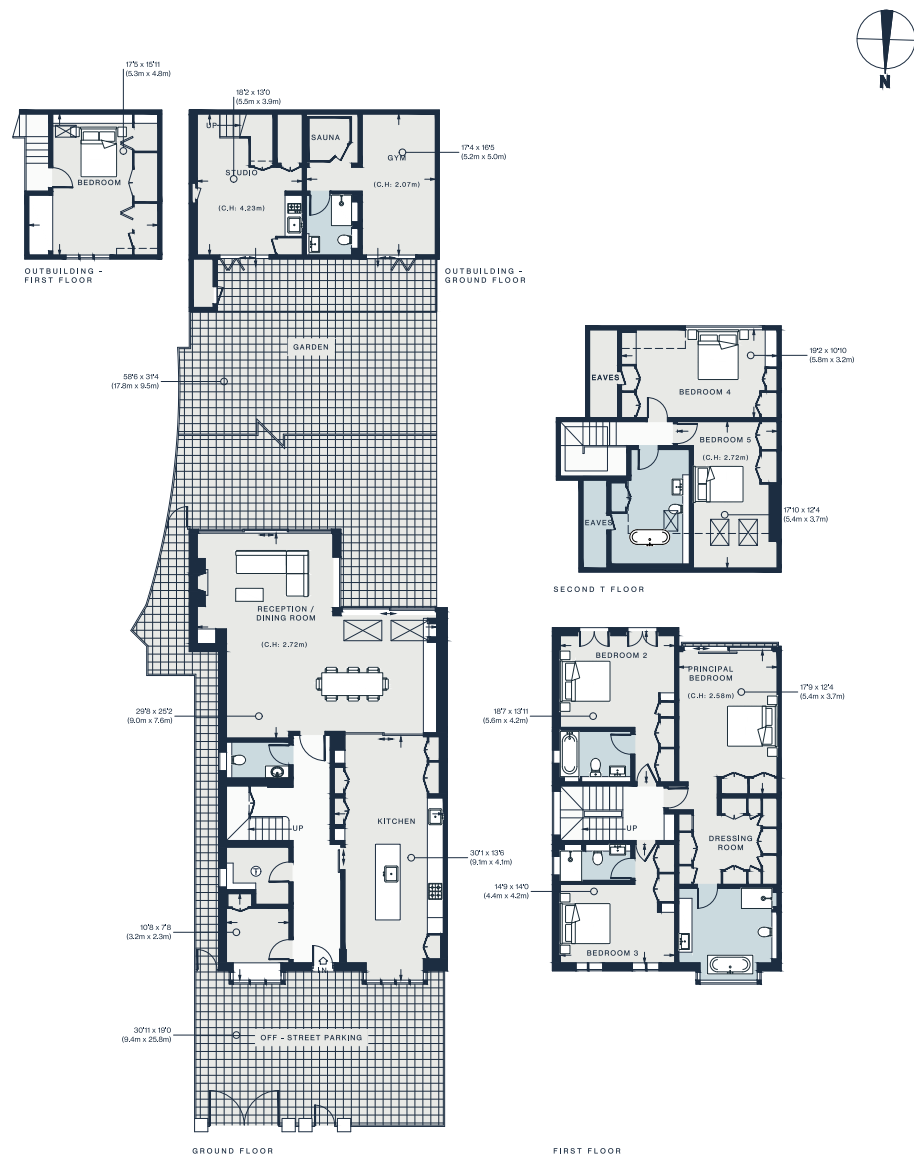












## Property Details

6 Bedrooms, 5 Bathrooms

Architecture by Abraham Sandoval of Sandoval

Open-plan kitchen, reception and dining room

Principal bedroom suite with a dressing room

Two guest bedroom suites

Two further bedrooms

Family bathroom

Outbuilding with a bedroom, bathroom and studio

Gym and sauna

Cloakroom

Garden with a patio and integrated planters

Ground floor underfloor heating

Solar panels

Off-street parking for one car

Video intercom

Approx. 3,972 sq ft / 369 sq m

EPC=C

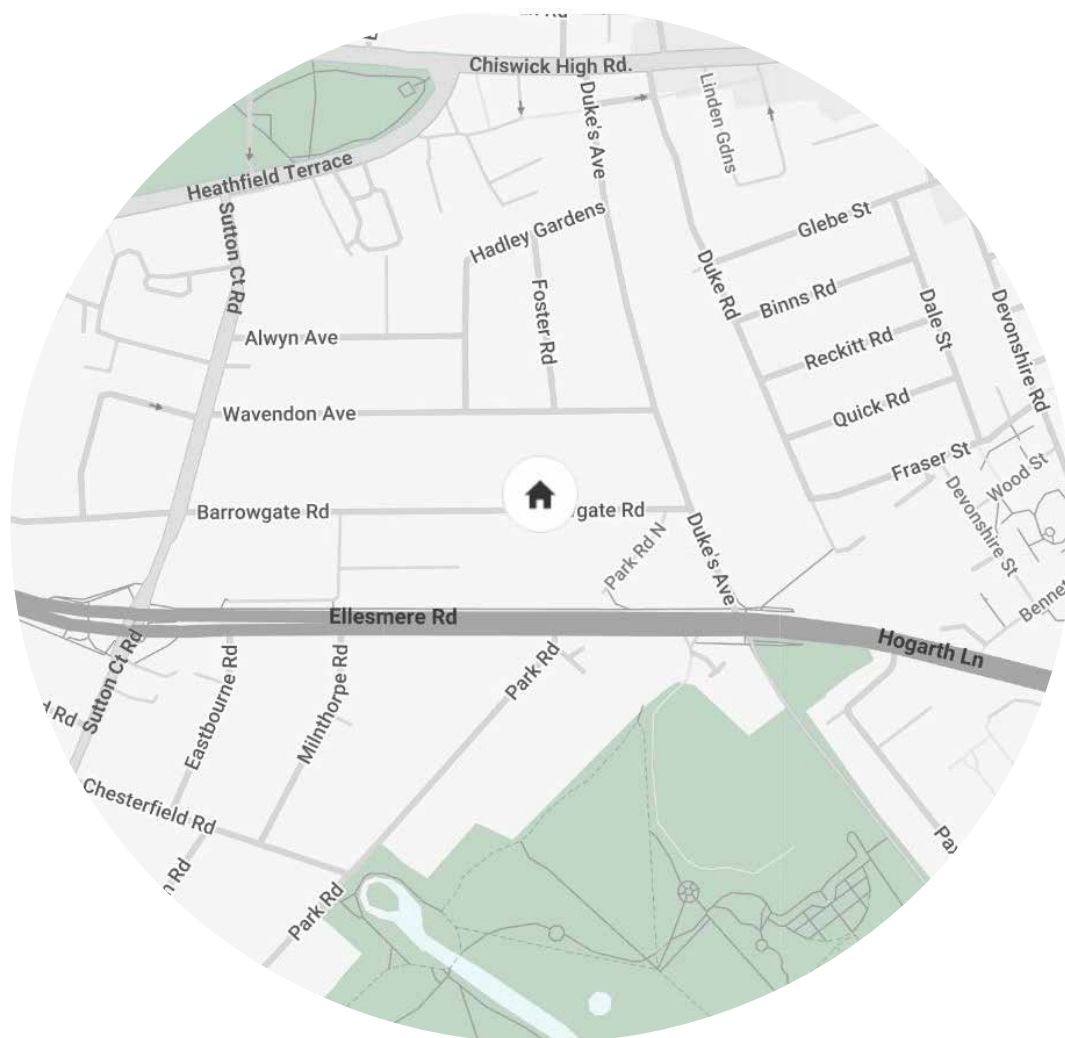
Tenure:Freehold

Council Tax Band: G

Approx. Gross Internal Area = 3,972 sq ft / 369 sq m

Floor plans are for illustrative purposes only and not to scale. Compliant with RICS code of measuring practice.  
Furniture layouts are indicative only. This property may be furnished, part-furnished or unfurnished. Please refer to your agent for details.  
Prepared for Domus Nova. Copyright © All Rights Reserved.





## Location

An enviable enclave of west London, Chiswick is a peaceful suburb with a village feel. Streets are lined with heritage properties, while the Thames leads the way to central London and beyond. For breakfast supplies, GAIL's bakery is just seven minutes' walk away. Caffeinate at Rhythm & Brews or head to Villa di Geggiano for an indulgent brunch. Turnham Green and Gunnersbury Triangle nature reserve are leafy refuges loved by the community, and perfect for a mid-morning stroll. For fine dining, renowned restaurant La Trompette is ten minutes away. Families also benefit from proximity to some of west London's most highly regarded schools.

Turnham Green – 15 mins (District, Picadilly)



# Who — we are



Forward-thinkers in property, design and culture, we're an estate agency that hits refresh.

Domus Nova was born out of a desire to do things differently; to break the traditional agency model and focus on design-led homes in London and Ibiza, all while delivering the highest levels of personal service.

Our story starts in the nineties when we founded Notting Hill's first boutique agency – and we continue to open the doors to the most remarkable spaces, revealing them to our like-minded community.

We want to help you live better – and believe considered design can do that. That's why we remain committed to building on our legacy, in collaboration with BARNES International, an established agency with a market-leading presence in 22 countries.

Uniting our local insight and curated portfolio with BARNES International's expansive reach, we can facilitate the best opportunities in not only London and Ibiza, but also across Europe, the US and further afield – whether that's a château in the South of France, a penthouse in New York, or a chalet in the Swiss Alps.

*In partnership with*

**BARNES**  
INTERNATIONAL REALTY

DOMUS NOVA





Specialising in London  
and Ibiza's design-led homes

Let's talk  
020 7221 7817  
[sales@domusnova.com](mailto:sales@domusnova.com)

The particulars above are a guide, not an offer or contract. Descriptions, photographs and plans are not statements or representations of fact. Measurements are approximate and not to scale. Prospective purchasers must verify the accuracy of the information within the particulars. Domus Nova does not give any representations or warranties; nor represent the Seller legally. Domus Nova has no liability, for any costs, losses or expenses incurred by the Seller or a prospective buyer relating to the sales and buying transaction.

Our Sales Disclaimer, trading names and privacy policy on how your data is processed and used is found in full on our website in our [Privacy Statement](#).

© 2025 Domus Nova in partnership with BARNES International. All rights reserved.