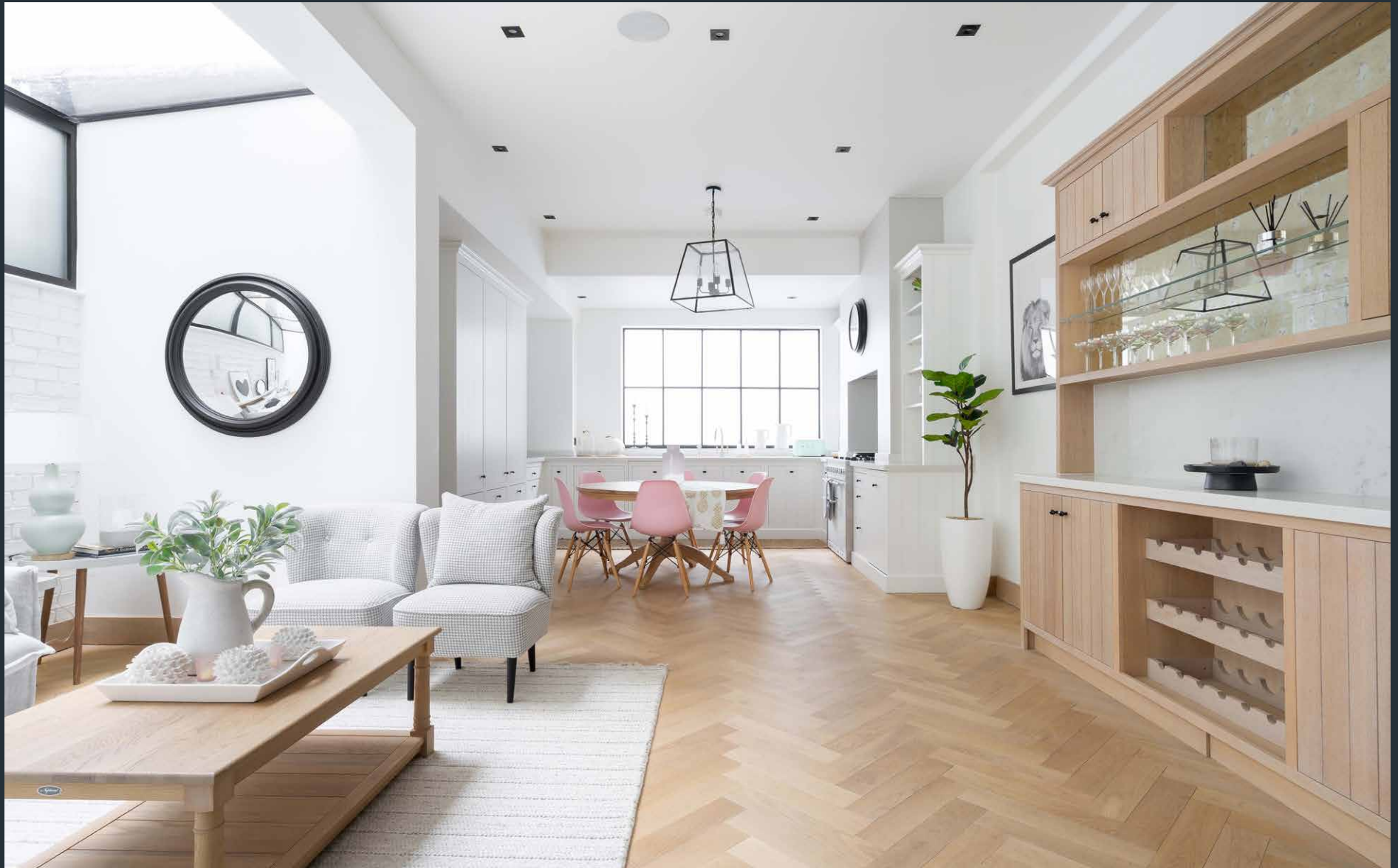


DOMUS NOVA

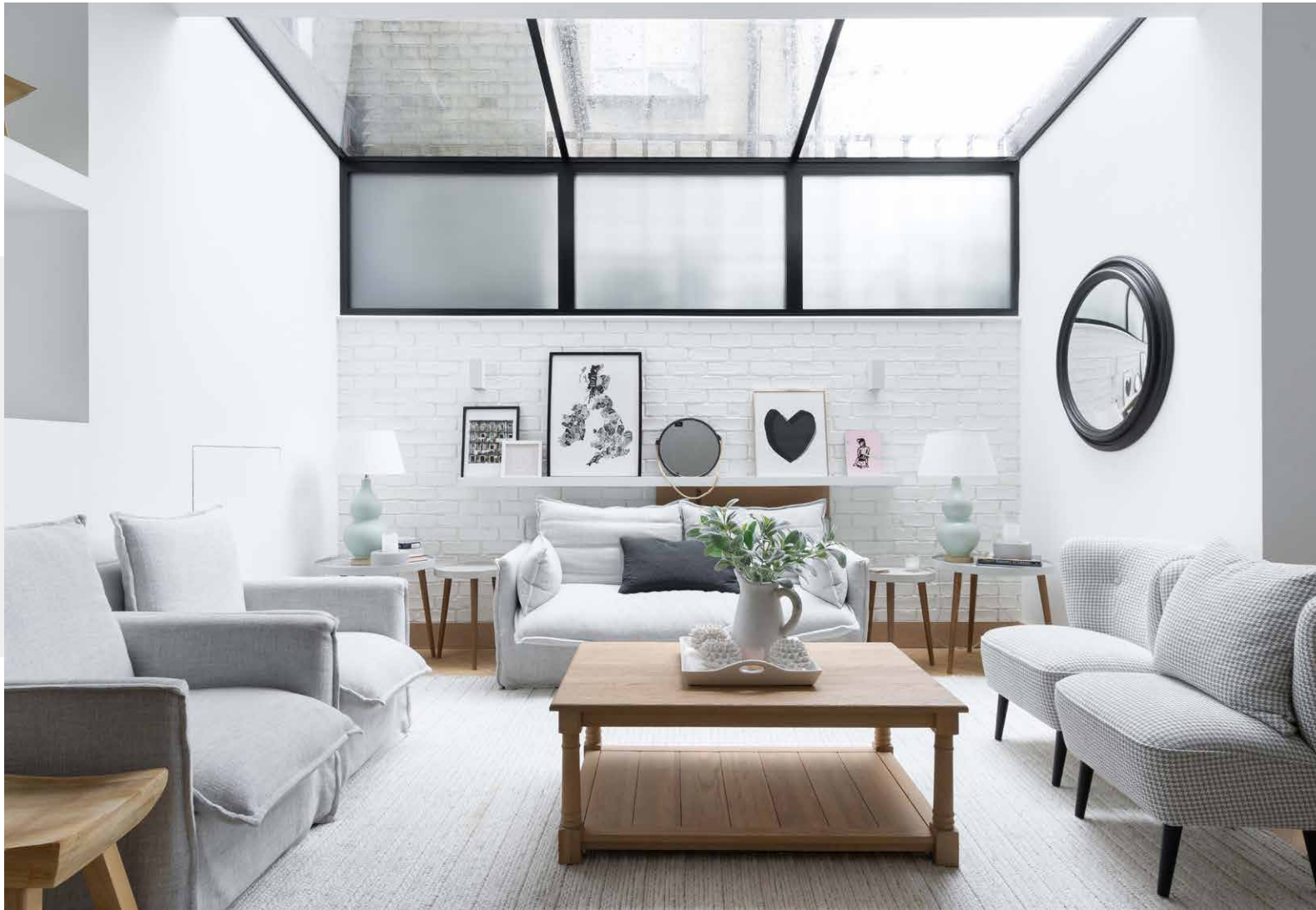


Astell Street
£5,500 pw - Short let



Traditional with a twist, this four-bedroom house for rent marries period charm with modern touches by design studio Zulufish.

An exclusive enclave in the heart of Chelsea, Astell Street is flanked by classic red brick houses. Behind its smart façade, this four-bedroom property plays with colour and materials for a contemporary yet elegant finish, envisaged by architectural design and build studio Zulufish.



In the reception room, a vibrant blue ceiling and walls make a bold first impression, while a stone fireplace with log burner creates a striking focal point. Polished herringbone floors run throughout the ground floor, leading into the open-plan kitchen-dining space.

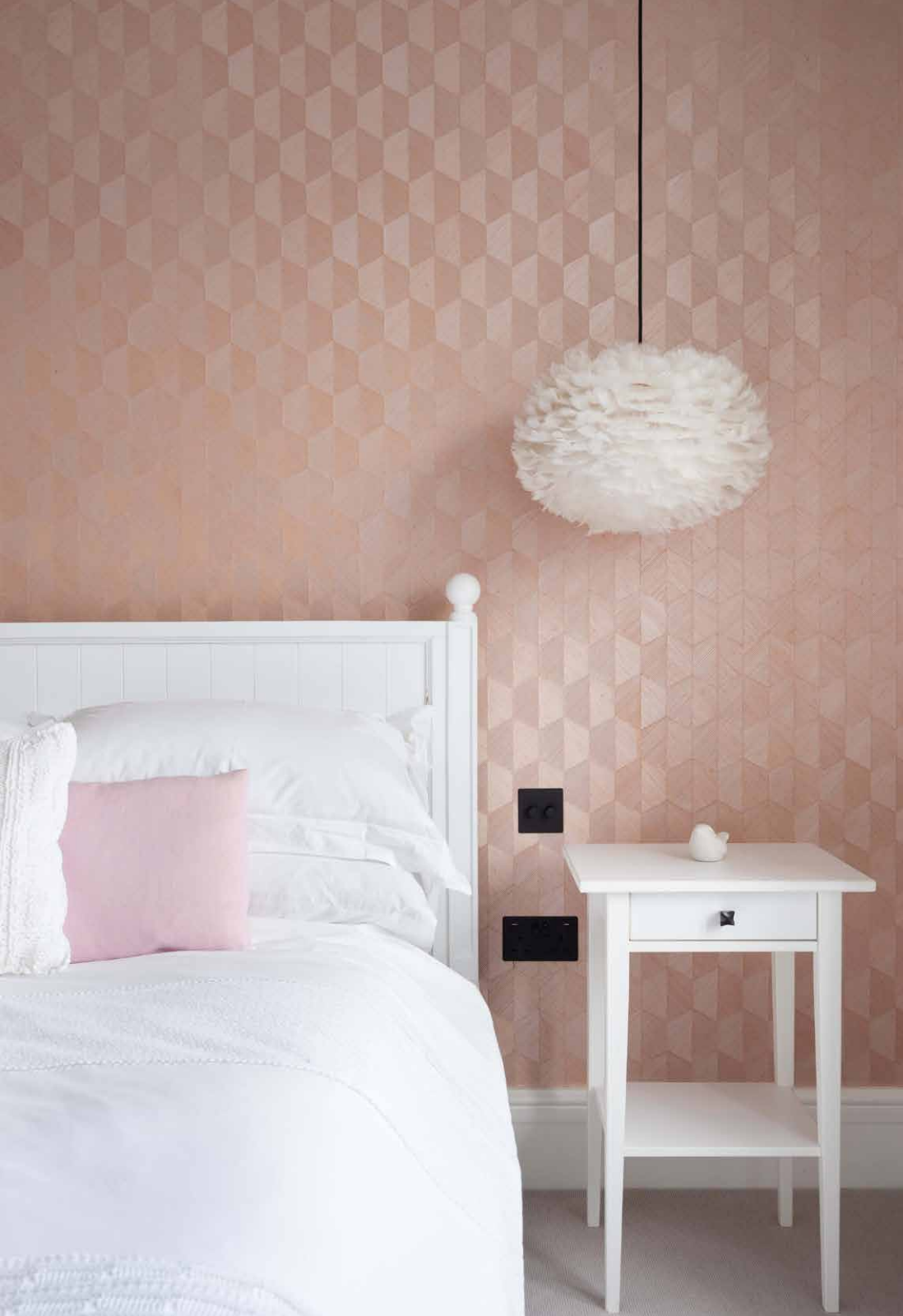
A zoned snug area with white painted brick and a steel framed glass roof ensures a bright, sociable space, with a built-in sideboard and open shelves to display glassware. In the white, shaker style kitchen there's ample storage and a Mercury range cooker – ideal for cooking family meals. Tucked to the side of the room is a convenient cloakroom.









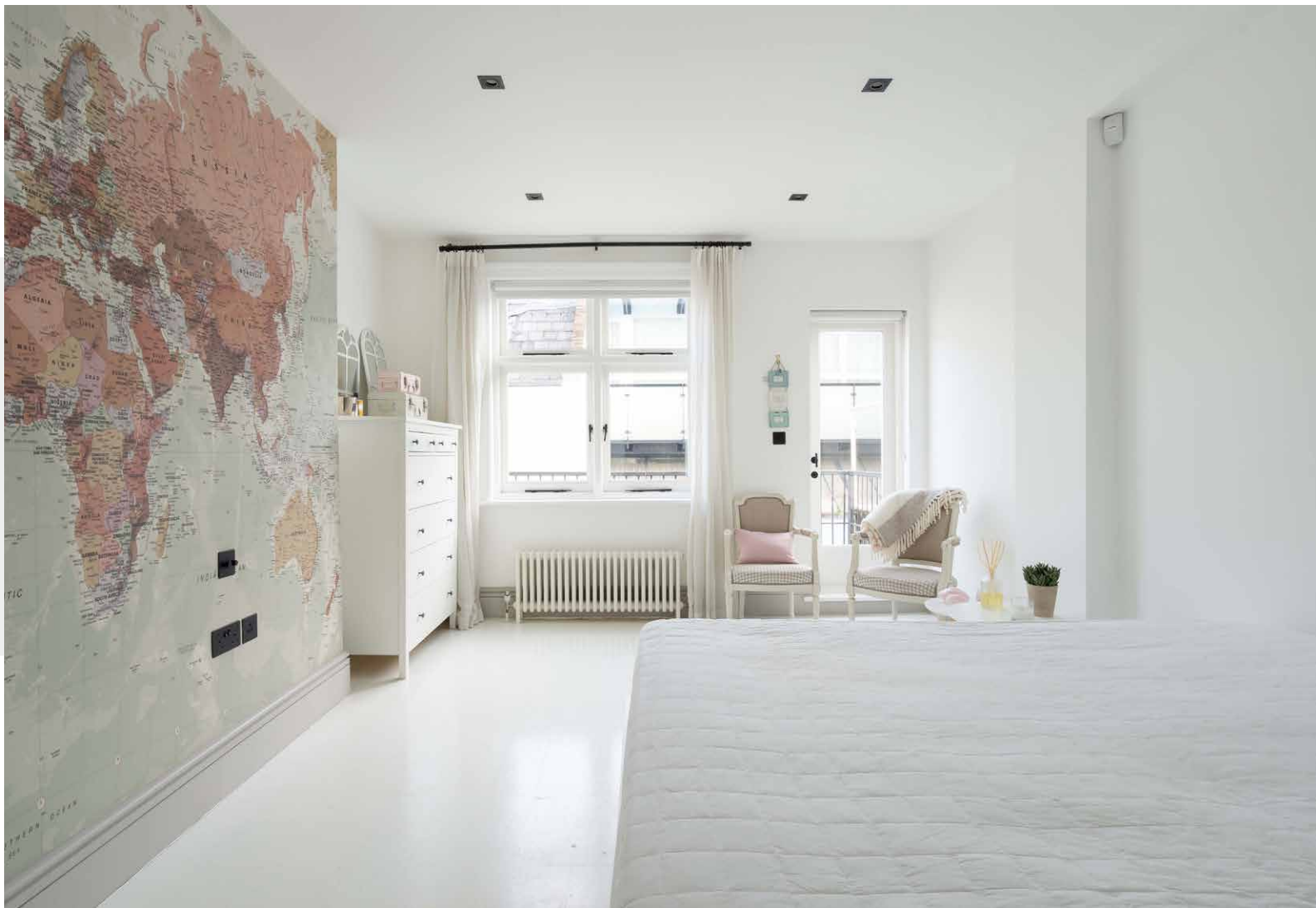


Upstairs, the first floor is home to two double bedroom suites. One with a shower room and its own private terrace, the other with a bath and separate shower.

On the second floor, the tranquil principal suite features a walk-in wardrobe, dressing table area and an en suite with a large double shower. A fourth bedroom has its own terrace and bathroom impeccably finished with powder pink silk walls and a freestanding bathtub. Outside on the landing, a kitchenette means you can brew a morning coffee without having to head downstairs.

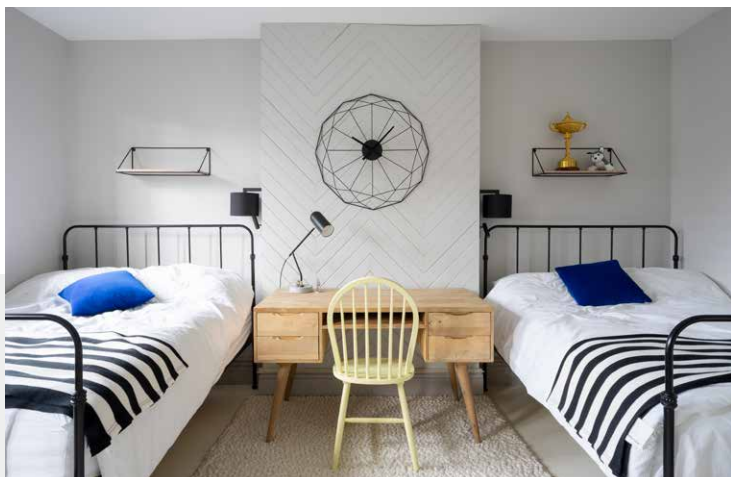
















GROUND FLOOR

FIRST FLOOR

SECOND FLOOR

RECEPTION
14'9 x 14'3 (4.5m x 4.3m)

BEDROOM 1
15'0 x 12'3 (4.5m x 3.7m)

BEDROOM 3
18'9 x 12'3 (5.7m x 3.7m)

KITCHEN / RECEPTION
29'6 x 17'6 (9.0m x 5.3m)

BEDROOM 2
24'0 x 11'9 (7.3m x 3.6m)

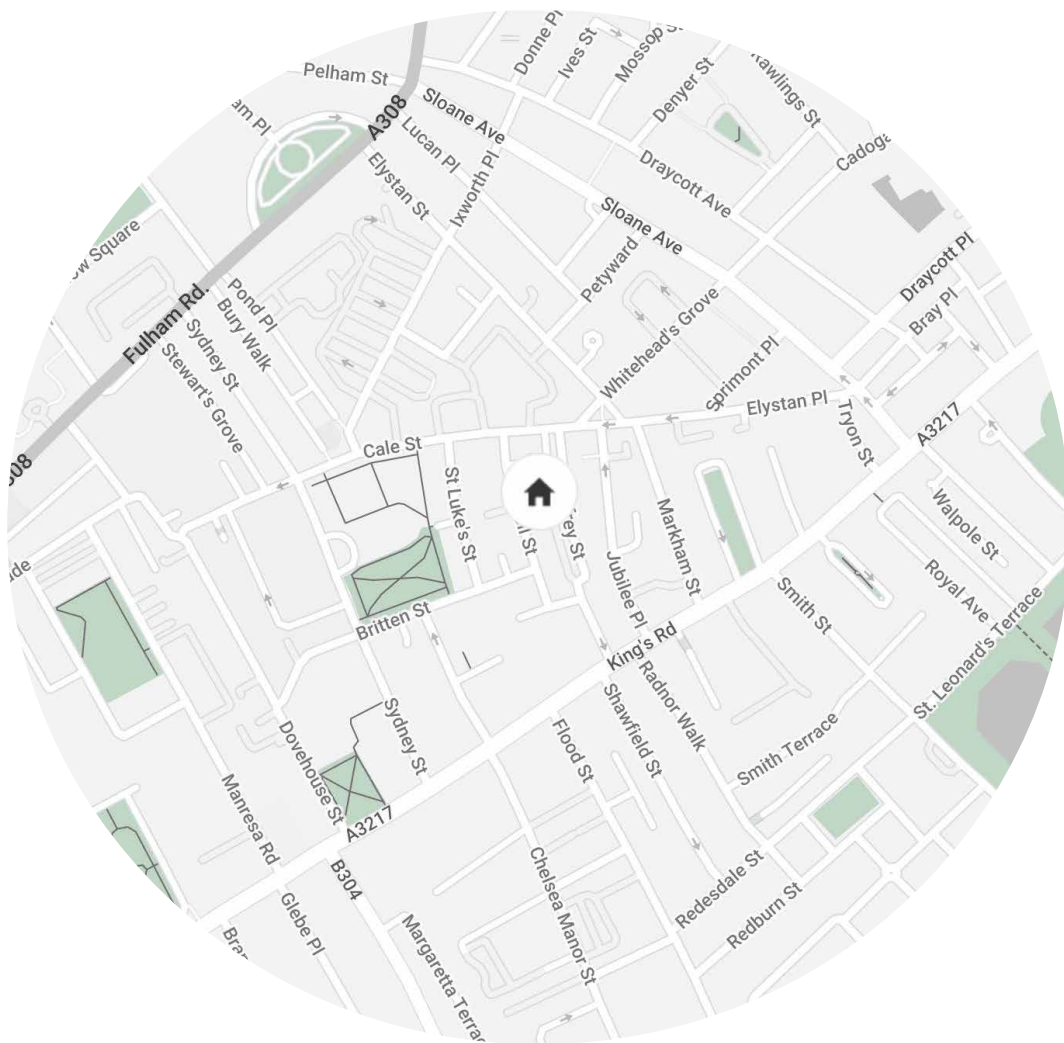
BEDROOM 4
15'0 x 13'6 (4.6m x 4.1m)

Approx. Gross Internal Area = 2,225 sq ft / 209 sq m

Property Details

Reception room with wood burner
Open-plan kitchen and dining room with snug
Principal bedroom suite with walk-in wardrobe
Three further bedroom suites
Garden
Two terraces
Garage
Royal Borough of Kensington & Chelsea

Approx 2,379 sq ft / 221 sq m
Council Tax Band - H
EPC - D
Deposit Payable - £22,000



Location

Astell Street's smart Chelsea postcode puts you at the epicentre of this bustling neighbourhood, just a heartbeat from its main thoroughfare, the King's Road. Browse design classics at The Conran Shop or grab brunch at Bluebird. Catch a cult classic at Everyman Chelsea or spend a rainy afternoon whiling away the hours at the Saatchi Gallery. If it's green space you're after, the Chelsea Physic Garden is close by.

South Kensington - 9 mins

Sloane Square - 12 mins

Specialising in London
and Ibiza's design-led homes

Let's talk
020 7727 1717
lettings@domusnova.com
domusnova.com

The property particulars are a guide not statements. Descriptions, photographs, and plans are for guidance and should be checked by the prospective tenant. The Property is offered "subject to contract and references". No warranties, representations, or Tenancy is given by Domus Nova. Expenses incurred by a prospective tenant will not be reimbursed if the Landlord withdraws prior to the Tenancy Agreement being signed, dated and exchanged and cleared funds received. Furniture and other items shown in a property at viewing may belong to a current tenant. The prospective tenant should verify in writing which fixtures and fittings forms part of the Tenancy. Our full lettings disclaimer together with trading names and our [Privacy Policy](#) is shown on our website