

# DOMUS NOVA

Askew Road

Shepherd's Bush W12

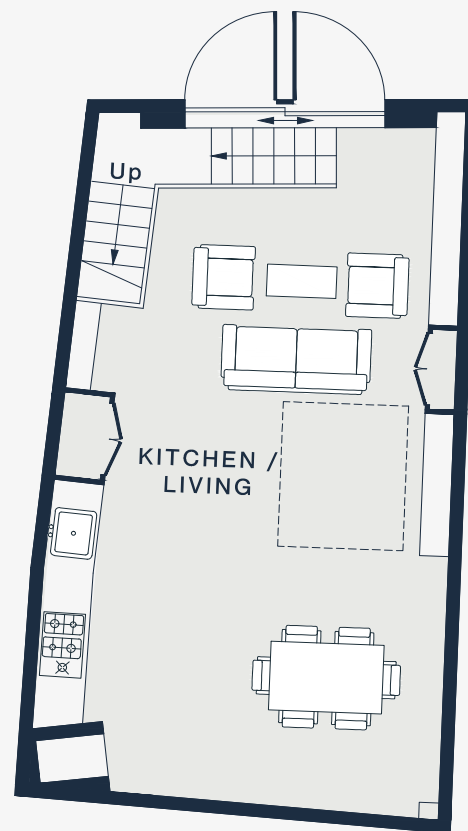
APPROXIMATE GROSS INTERNAL AREA

980 sq ft / 91 sq m

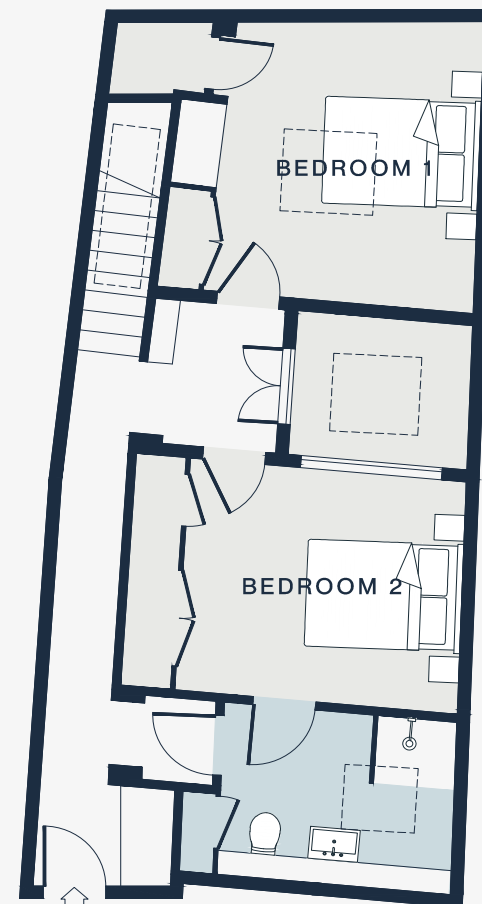
020 7727 1717

domusnova.com

LONDON | IBIZA



BASEMENT



GROUND FLOOR

KITCHEN / LIVING / DINING

25'4 x 15'7 (7.7m x 4.8m)

BEDROOM 1

12'0 x 10'6 (3.7m x 3.2m)

BEDROOM 2

11'2 x 9'3 (3.4m x 2.8m)

Approx. Gross Internal Area = 980 sq ft / 91.0 sq m

Floor plans are for illustrative purposes only and not to scale. Compliant with RICS code of measuring practice. Furniture layouts are indicative only. This property may be furnished, part-furnished or unfurnished. Please refer to your agent for details.