

# DOMUS NOVA

Arundel Gardens

Notting Hill W11

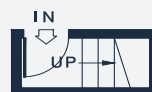
APPROXIMATE GROSS INTERNAL AREA

1,298 sq ft / 120.6 sq m

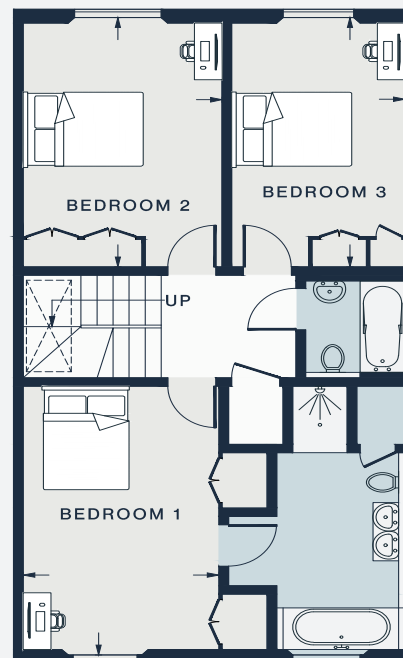
020 7727 1717

domusnova.com

LONDON | IBIZA



SECOND FLOOR



THIRD FLOOR

RECEPTION / KITCHEN

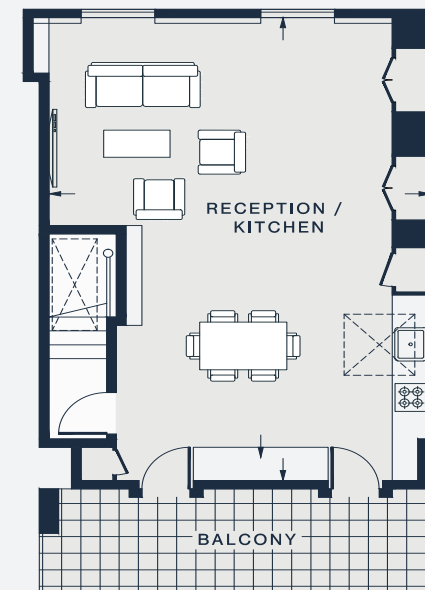
27'5 x 19'2 (8.3m x 5.4m)

BEDROOM 1

15'11 x 10'1 (4.8m x 3.0m)



 = REDUCED HEADROOM BELOW 1.5M / 5'0



FOURTH FLOOR

BEDROOM 2

14'9 x 10'2 (4.5m x 3.1m)

BEDROOM 3

14'9 x 8'11 (4.5m x 2.7m)

Floor plans are for illustrative purposes only and not to scale. Compliant with RICS code of measuring practice. Furniture layouts are indicative only. This property may be furnished, part-furnished or unfurnished. Please refer to your agent for details.