

# DOMUS NOVA



Artesian Road W2 – £2,000 p/w (LL / SL)

In partnership with **BARNES**  
INTERNATIONAL REALTY



A hallmark of expertly-imagined, modern living by tastemaker Samuel Chisholm awaits on this peaceful residential street. The entrance lobby of this two-bedroom property leads to the semi-open kitchen and dining space. Draw back the panel of birch ply shutters to flood the room with south-facing light. It's an environment envisaged for creative cooks; terrazzo worktops and a polished copper splash-back, which subtly amplifies the sense of space. Additional light is afforded through clerestory windows and a skylight – positioned over a reading nook.

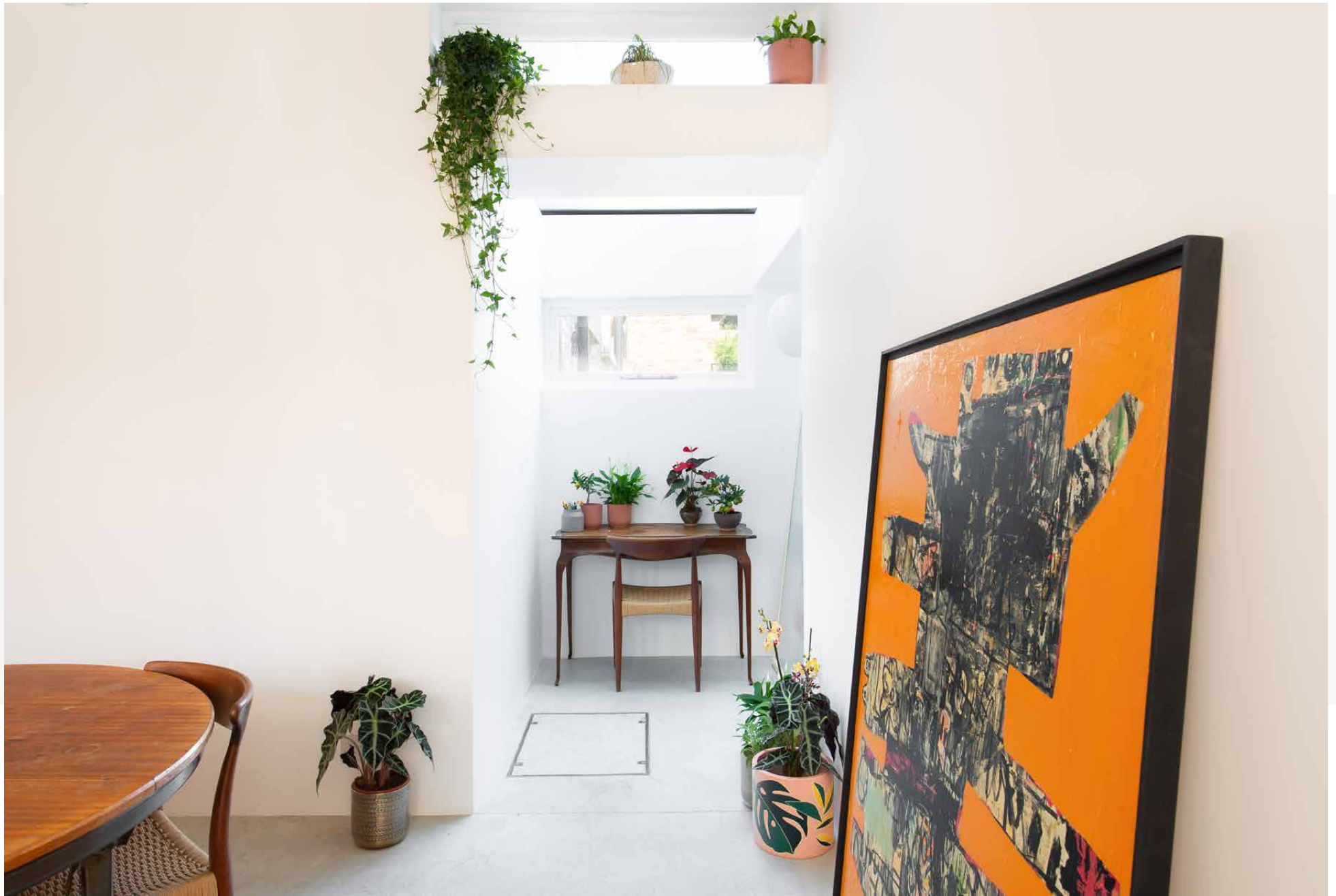
The architectural staircase – inspired by the work of Swiss architect Adolphe Appia – ascends the entire property, sculpted with incurved bannisters and Dinesen douglas fir treads. The balustrade is illuminated; casting a warm and inviting glow. The first-floor reception room is both uplifting and serene, lit through dual-aspect windows and with expansive Dinesen flooring. During warmer months, open the double doors to the rear, with peaceful leafy views over the neighbouring gardens.





“The architectural staircase – inspired by the work of Swiss architect Adolphe Appia – ascends the entire property, sculpted with incurved bannisters and Dinesen douglas fir treads.

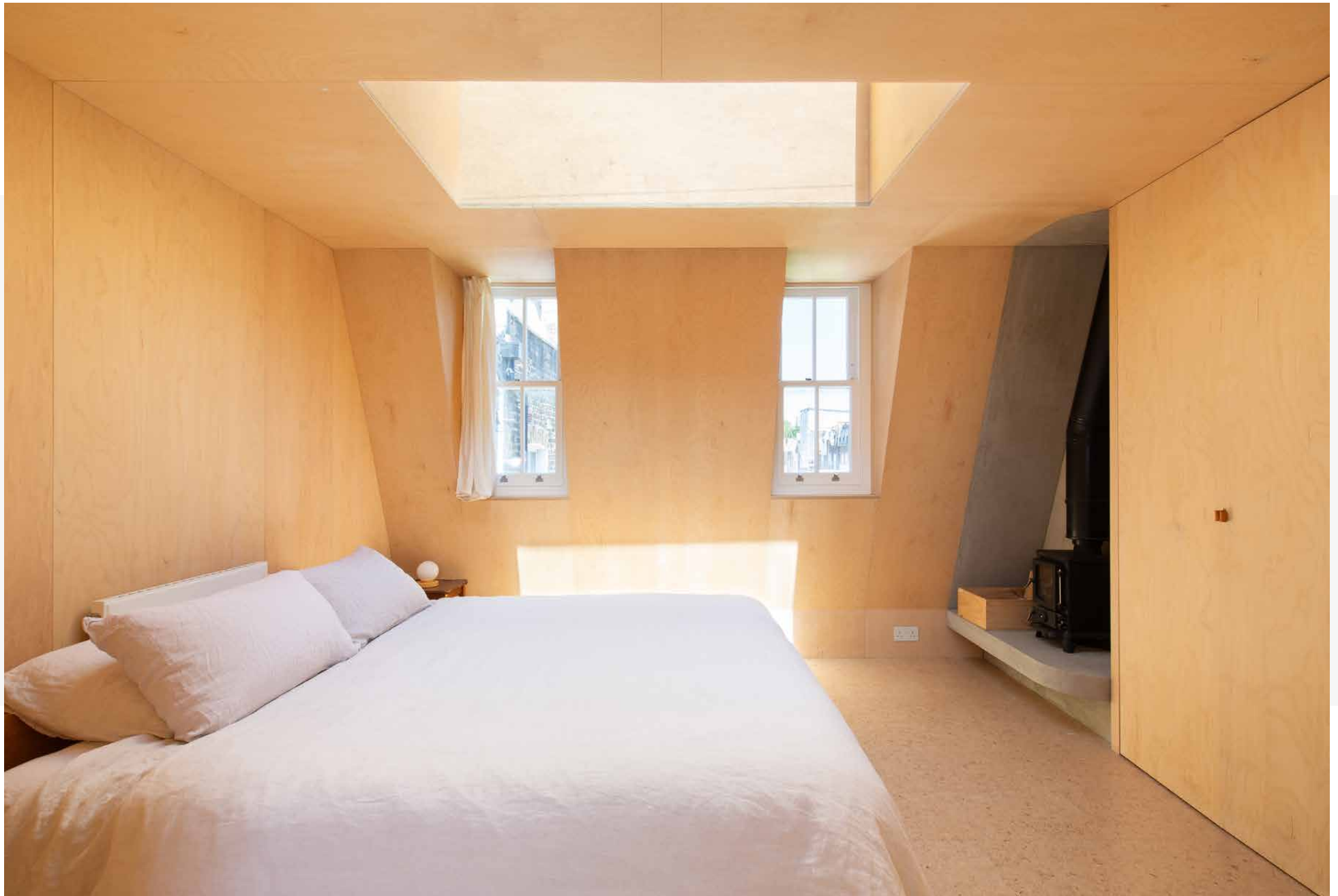


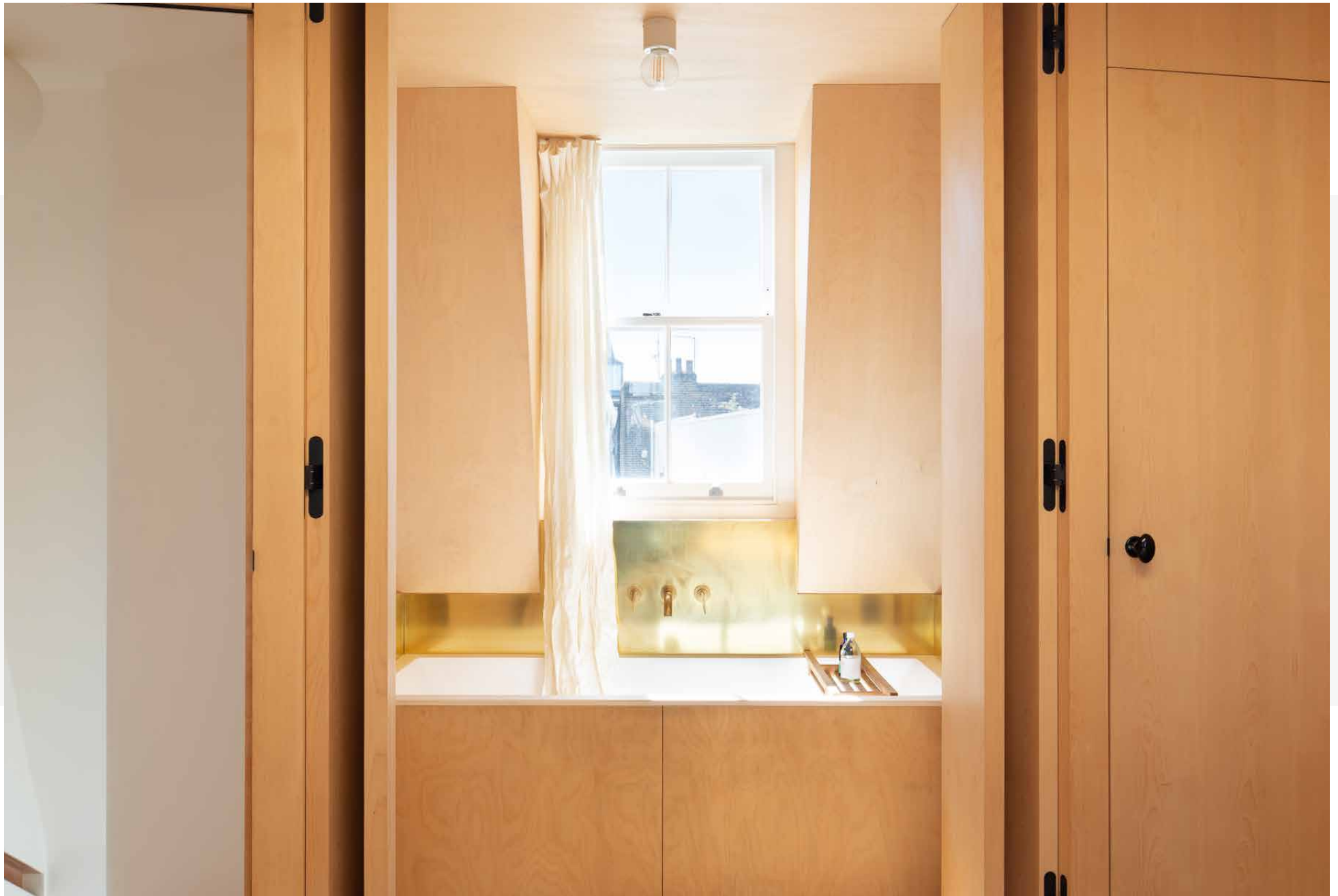


The principle bedroom, found on the top floor, has a calm and voluminous feel. There's a bright, alpine-esque aesthetic to the space, thanks to the blonde panelled walls, cork floors, the skylight and a miniature log burner. Concertina doors open to reveal the en-suite bath sat beneath a central dormer window; a lustrous panel of milled brass is an eye-catching detail – drawing in light which is beautifully gilded across its surface. Downstairs, a guest bedroom has versatility to be used as a home office or exercise area, finished with neutral tones and pale floors. A set of shutters accentuates the sense of flow and light from this space to the second bathroom. Its dusty pink Tadelakt plaster contrasts with brushed brass faucets. This home is a masterpiece in considered materials and structure, spread across inviting communal and intimate spaces alike.

Popular as a short-let base for visiting creatives within the film industry, the home is an ideal investment property, available for the owner's use whenever desired as a pied-à-terre.

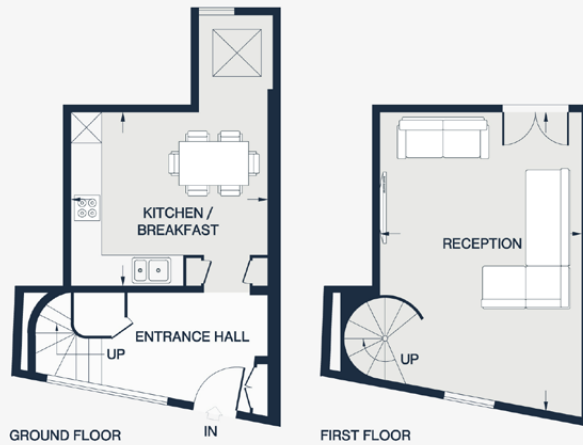
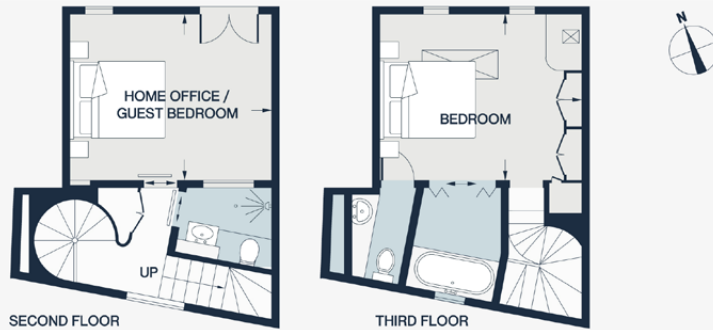












RECEPTION  
19'3 x 12'11 (5.8m x 3.9m)

KITCHEN / BREAKFAST  
12'11 x 9'2 (3.9m x 2.8m)

BEDROOM 1  
12'11 x 10'11 (3.9m x 3.3m)

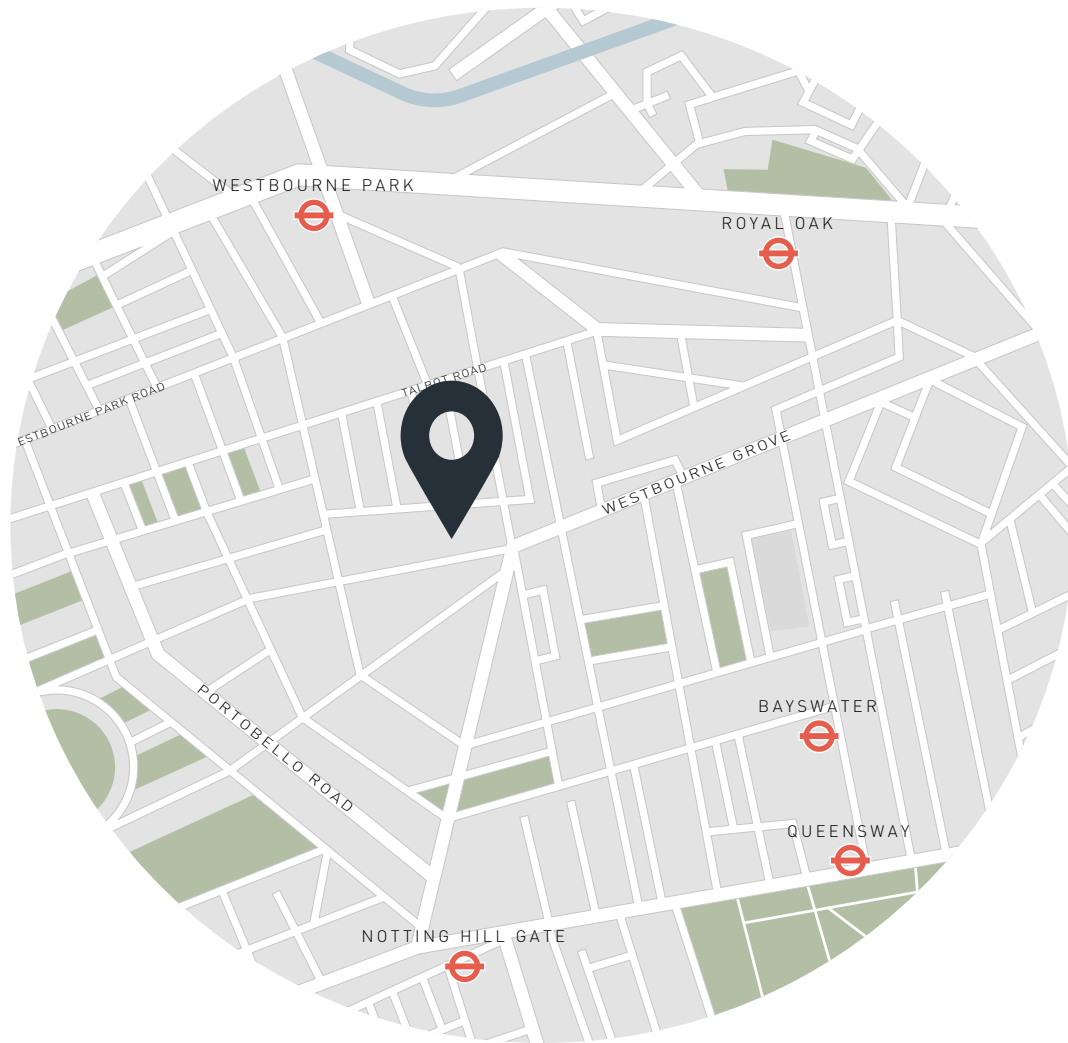
HOME OFFICE / GUEST BEDROOM  
12'11 x 10'5 (3.9m x 3.1m)

Floor plans are for illustrative purposes only and not to scale. Compliant with RICS code of measuring practice.

## Property Details

2 Bedrooms, 2 Bathrooms  
 Architect: Samuel Chisholm  
 Formal reception room  
 Open-plan kitchen and dining room  
 Family room  
 Principal bedroom suite  
 Five further bedrooms  
 Three further bathrooms  
 Swimming pool  
 Roof terrace  
 Gym  
 Utility room  
 Off-street parking  
 Royal Borough of Kensington & Chelsea

Approx. 1,020 sq ft / 95 sq m  
 EPC=D  
 Deposit: £12,000 (LL) / £8,000 (SL)  
 Council Tax Band: F



## Location

Serene living in the beating heart of Notting Hill. Artesian Road is a peaceful residential street just off Ledbury Road, home to coveted eateries such as Ottolenghi and The Ledbury, or wellness spots like FaceGym and Caudalie Boutique Spa. In a few minutes, you're on fashionable Westbourne Grove or vibrant Portobello Road, characterised by their vast array of restaurants, vintage boutiques and galleries. Pick up essentials from Notting Hill Fish and Meat Shop, or head to Core by Clare Smyth for a night of fine dining. It's a short walk to the Tube, giving you easy access to central London and beyond.

Westbourne Park – 9 minutes (Hammersmith & City, Circle)

Notting Hill Gate – 10 minutes (Central, Circle, District)



# Who ——— we are

Forward-thinkers in property, design and culture, we're an estate agency that hits refresh.

Domus Nova was born out of a desire to do things differently; to break the traditional agency model and focus on design-led homes in London and Ibiza, all while delivering the highest levels of personal service.

Our story starts in the nineties when we founded Notting Hill's first boutique agency – and we continue to open the doors to the most remarkable spaces, revealing them to our like-minded community.

We want to help you live better – and believe considered design can do that. That's why we remain committed to building on our legacy, in collaboration with BARNES International, an established agency with a market-leading presence in 22 countries.

Uniting our local insight and curated portfolio with BARNES International's expansive reach, we can facilitate the best opportunities in not only London and Ibiza, but also across Europe, the US and further afield – whether that's a château in the South of France, a penthouse in New York, or a chalet in the Swiss Alps.



# DOMUS NOVA

Specialising in London  
and Ibiza's design-led homes

Let's talk

020 7727 1717

[lettings@domusnova.com](mailto:lettings@domusnova.com)

---

The property particulars are a guide not statements. Descriptions, photographs, and plans are for guidance and should be checked by the prospective tenant. The Property is offered "subject to contract and references". No warranties, representations, or Tenancy is given by Domus Nova. Expenses incurred by a prospective tenant will not be reimbursed if the Landlord withdraws prior to the Tenancy Agreement being signed, dated and exchanged and cleared funds received. Furniture and other items shown in a property at viewing may belong to a current tenant. The prospective tenant should verify in writing which fixtures and fittings forms part of the Tenancy. Our full lettings disclaimer together with trading names and our [Privacy Policy](#) is shown on our website

© 2025 Domus Nova in partnership with BARNES International. All rights reserved.

*In partnership with*  
**BARNES**  
INTERNATIONAL REALTY