

DOMUS NOVA

Artesian Road

Bayswater W2

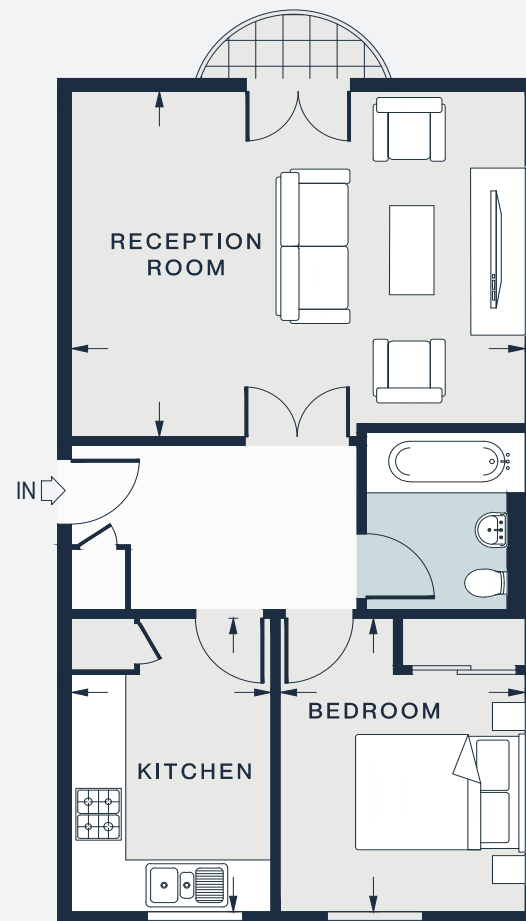
APPROXIMATE GROSS INTERNAL AREA

516 sq ft / 48 sq m

020 7727 1717

domusnova.com

LONDON | IBIZA



FIRST FLOOR

RECEPTION	KITCHEN	BEDROOM
16'6 x 13'3 (5.0m x 4.0m)	11'3 x 7'3 (3.4m x 2.2m)	11'3 x 9'0 (3.4m x 2.7m)

Approx. Gross Internal Area = 516 sq ft / 48 sq m

Floor plans are for illustrative purposes only and not to scale. Compliant with RICS code of measuring practice. Furniture layouts are indicative only. This property may be furnished, part-furnished or unfurnished. Please refer to your agent for details.