

DOMUS NOVA



Allen Street W8
£1,795,000

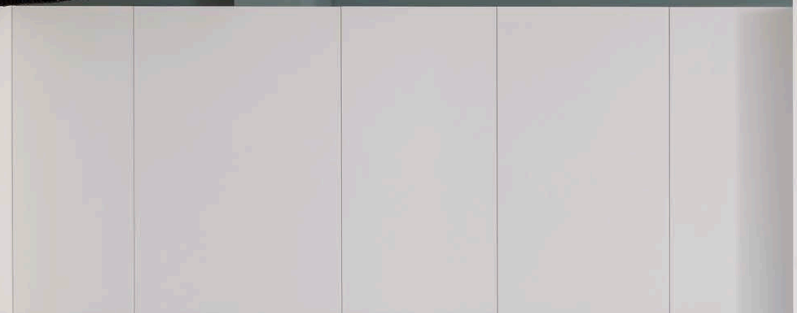


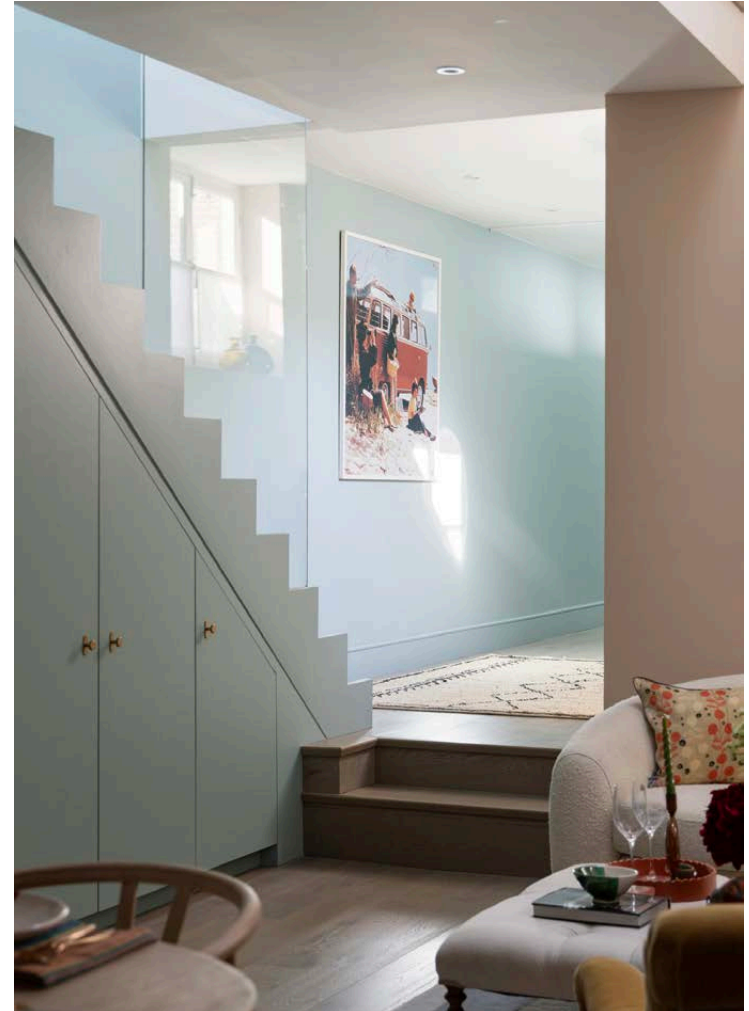
Sitting alongside a smart townhouse, a flagstone path paves the way to this considered maisonette. Inside, a corridor crowned with a sloping glass roof leads through a functional study to a standout living space beyond.

Encompassing an open-plan reception room and kitchen, the sense of volume immediately impresses. Positioned beneath a void, the ceiling soars to over 2.5 metres high, adding a lofty dimension. Natural light filters down through a skylight above, reflecting off the plaster pink walls. Stretching upwards, a chimney breast accentuates the vertical proportions at play, while a wood burner adds cosiness in the colder months.

Step out from under the void to a more intimate dining space. It's served by streamlined kitchen featuring white, handleless units and veined marble surfaces. Along the same wall, understairs cupboards offer additional storage, painted in a pistachio shade. A compact south-west facing terrace invites the outside in, with room for seating and a small table.















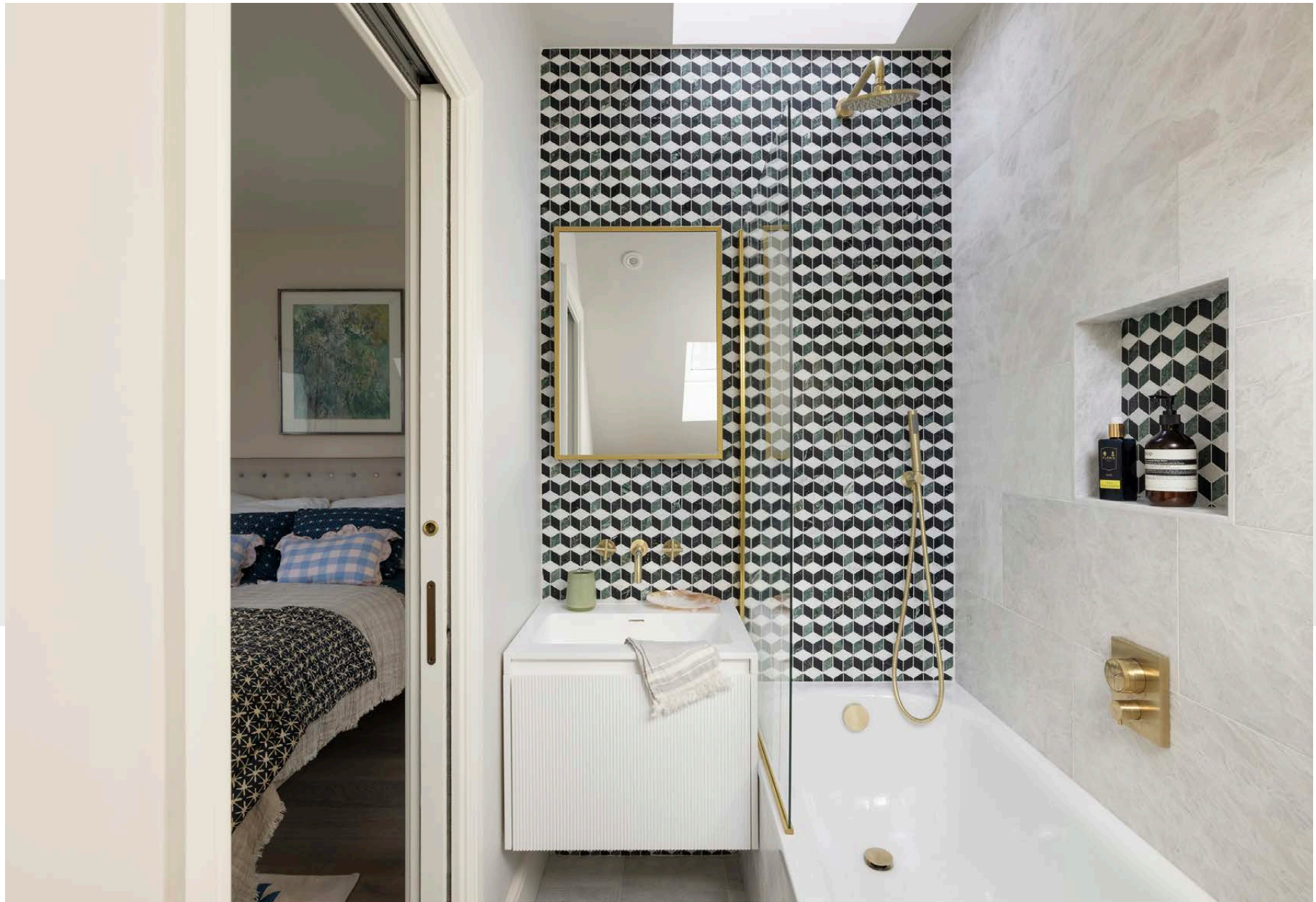
Upstairs, glass balustrades line the landing, emphasising the sense of space and offering a viewpoint over the living quarters below. Both bedrooms are understated in design. In the principal, a trio of roof windows and a void mean natural light is in plentiful supply. A recess makes an ideal nook for a desk or dressing table. In the en suite – complete with a rainfall shower over a bathtub – a feature wall of geometric tiles pops against the neutral backdrop.

Painted in soft green, the guest bedroom is an inviting space, with an east-facing window to catch the sunrise. It comes with an en suite shower room, enlivened with herringbone tiles in an array of grey and green shades.



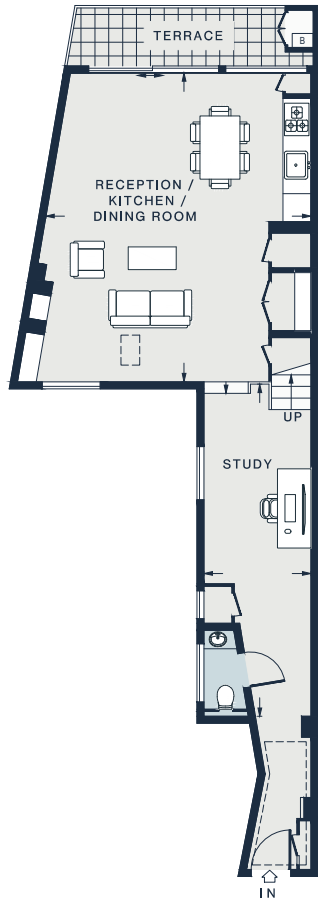




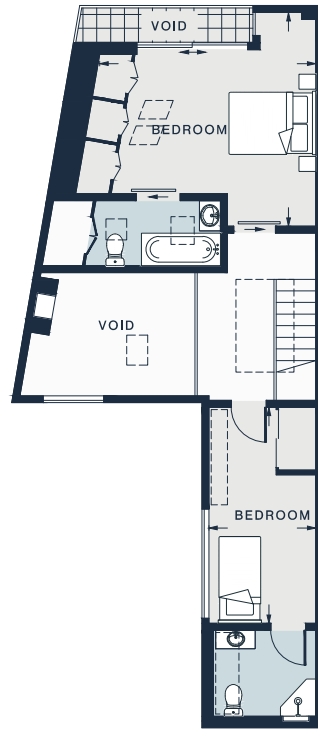








GROUND FLOOR



FIRST FLOOR



RECEPTION / DINING / KITCHEN

21'10 x 18'8 (6.6m x 5.7m)

STUDY

23'5 x 6'9 (7.1m x 2.1m)

BEDROOM

15'5 x 15'1 (4.7m x 4.6m)

BEDROOM

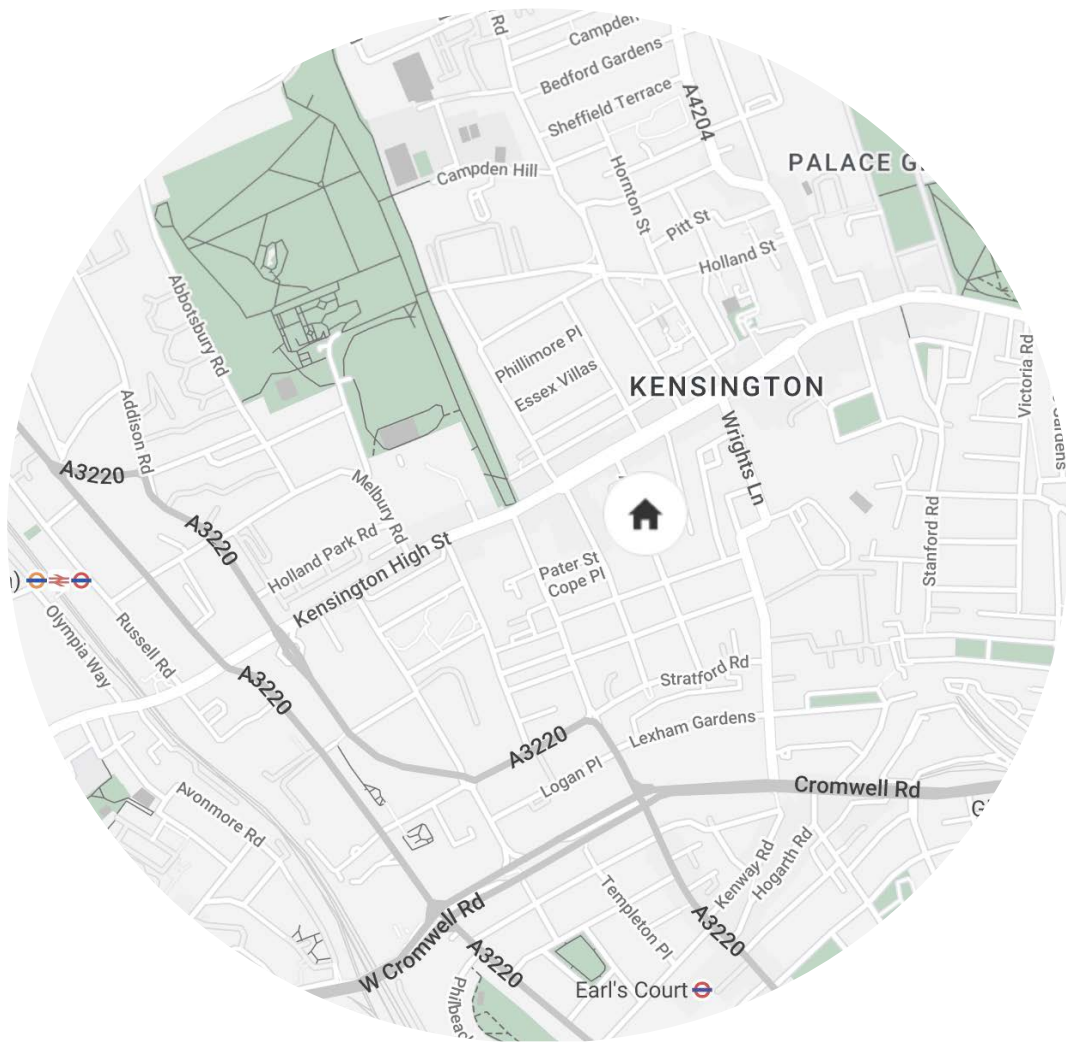
15'4 x 7'4 (4.7m x 2.2m)

Approx. Gross Internal Area = 1290 sq ft / 119.8 sq m

Property Details

- Open-plan reception room and kitchen
- Principal bedroom suite
- Guest bedroom suite
- Office space
- Terrace
- Cloakroom
- Royal Borough of Kensington & Chelsea

- Approx. 1,290 sq ft / 119.84 sq m
- EPC - C
- Council tax - F
- Freehold



Location

Moments from Kensington High Street and the green spaces of both Holland Park and Hyde Park, turn the tempo up or down here. For an adrenalin hit, book a class at 1Rebel and refuel with a brunch bowl at Megan's on the High Street. Lazy weekends are made for catching an exhibition at the Design Museum followed by an indulgent lunch at Michelin-starred Kitchen W8. For a more relaxed bite, there's The Holland or The Abingdon. Whole Foods Market and Waitrose are both within walking distance for groceries.

High Street Kensington – 5 mins (Circle, District)

Earl's Court – 11 mins (District, Piccadilly)

Specialising in London
and Ibiza's design-led homes

Let's talk
020 7221 7817
sales@domusnova.com
domusnova.com

The particulars above are a guide, not an offer or contract. Descriptions, photographs and plans are not statements or representations of fact. Measurements are approximate and not to scale. Prospective purchasers must verify the accuracy of the information within the particulars. Domus Nova does not give any representations or warranties, nor represent the Seller legally. Domus Nova has no liability, for any costs, losses or expenses incurred by the Seller or a prospective buyer relating to the sales and buying transaction.

Our Sales Disclaimer, trading names and privacy policy on how your data is processed and used is found in full on our website in our [Privacy Statement](#).

© Domus Nova 2023. All rights reserved.