

# DOMUS NOVA

All Saints Road

Notting Hill W11

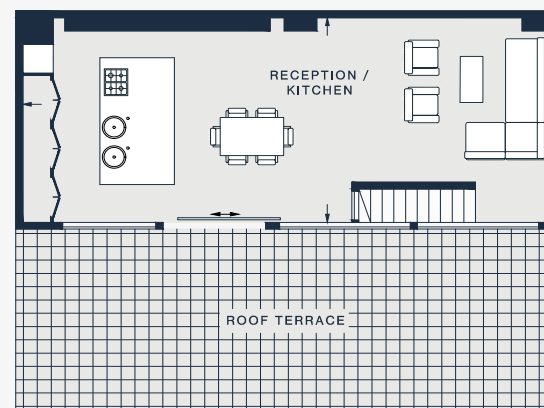
APPROXIMATE GROSS INTERNAL AREA

**1,085 sq ft / 100.8 sq m**

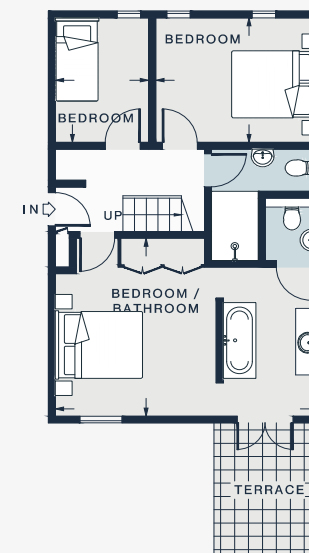
020 7727 1717

domusnova.com

LONDON | IBIZA



THIRD FLOOR



SECOND FLOOR

RECEPTION / KITCHEN

37'3 x 15'0 (11.3m x 4.6m)

BEDROOM

9'3 x 6'7 (2.8m x 2.0m)

BEDROOM / BATHROOM

18'2 x 13'2 (5.5m x 4.0m)

BEDROOM

11'4 x 9'3 (3.5m x 2.8m)

Approx. Gross Internal Area = 1085 sq ft / 100.8 sq m

Floor plans are for illustrative purposes only and not to scale. Compliant with RICS code of measuring practice. Furniture layouts are indicative only. This property may be furnished, part-furnished or unfurnished. Please refer to your agent for details.