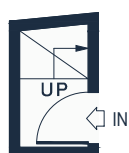
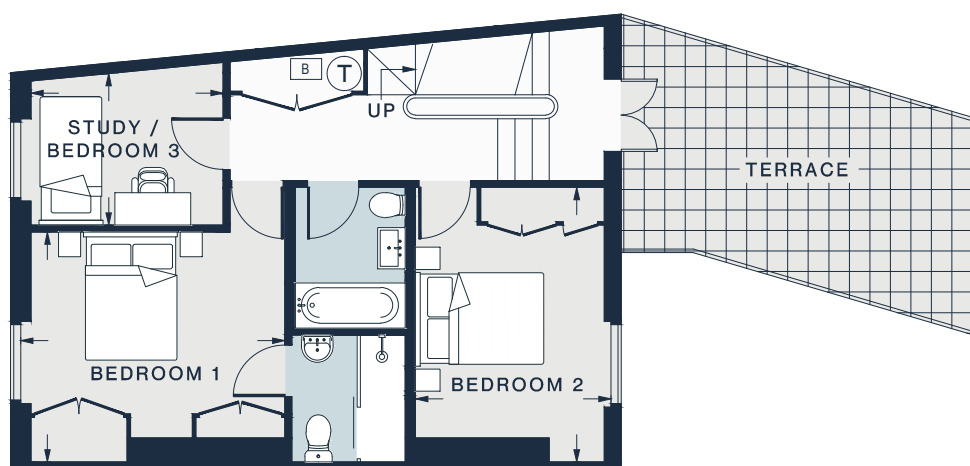
 = Reduced head height below 1.5m

THIRD FLOOR



FIRST FLOOR



SECOND FLOOR

#### RECEPTION ROOM / KITCHEN

25'4 x 18'1 (7.7m x 5.5m)

#### BEDROOM 1

12'8 x 10'11 (3.8m x 3.3m)

#### BEDROOM 2

13'1 x 9'4 (3.9m x 2.8m)

#### STUDY / BEDROOM 3

9'1 x 7'5 (2.7m x 2.2m)

Approx. Gross Internal Area = 1086 sq ft / 101.0 sq m

Floor plans are for illustrative purposes only and not to scale. Compliant with RICS code of measuring practice.  
Prepared for Domus Nova. Copyright © All Rights Reserved.