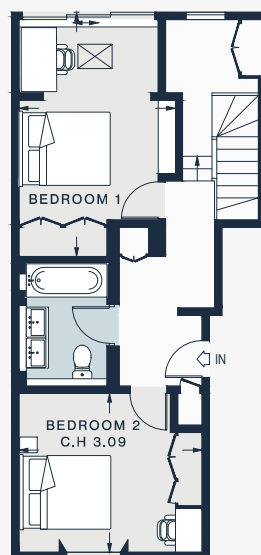


LOWER GROUND FLOOR



GROUND FLOOR

RECEPTION / DINING ROOM / KITCHEN

29'5 x 15'6 (8.9m x 4.7m)

BEDROOM 1

15'5 x 10'6 (4.7m x 3.2m)

VAULTS

10'2 x 7'3 (3.1m x 2.2m)

BEDROOM 2

16'6 x 10'6 (5.0m x 3.2m)

BEDROOM 3

12'4 x 10'9 (3.7m x 3.2m)

Approx. Gross Internal Area = 1,302 sq ft / 121 sq m

Vault = 70 sq ft / 6.5 sq m

Total = 1,372 sq ft / 127.5 sq m

Floor plans are for illustrative purposes only and not to scale. Compliant with RICS code of measuring practice.