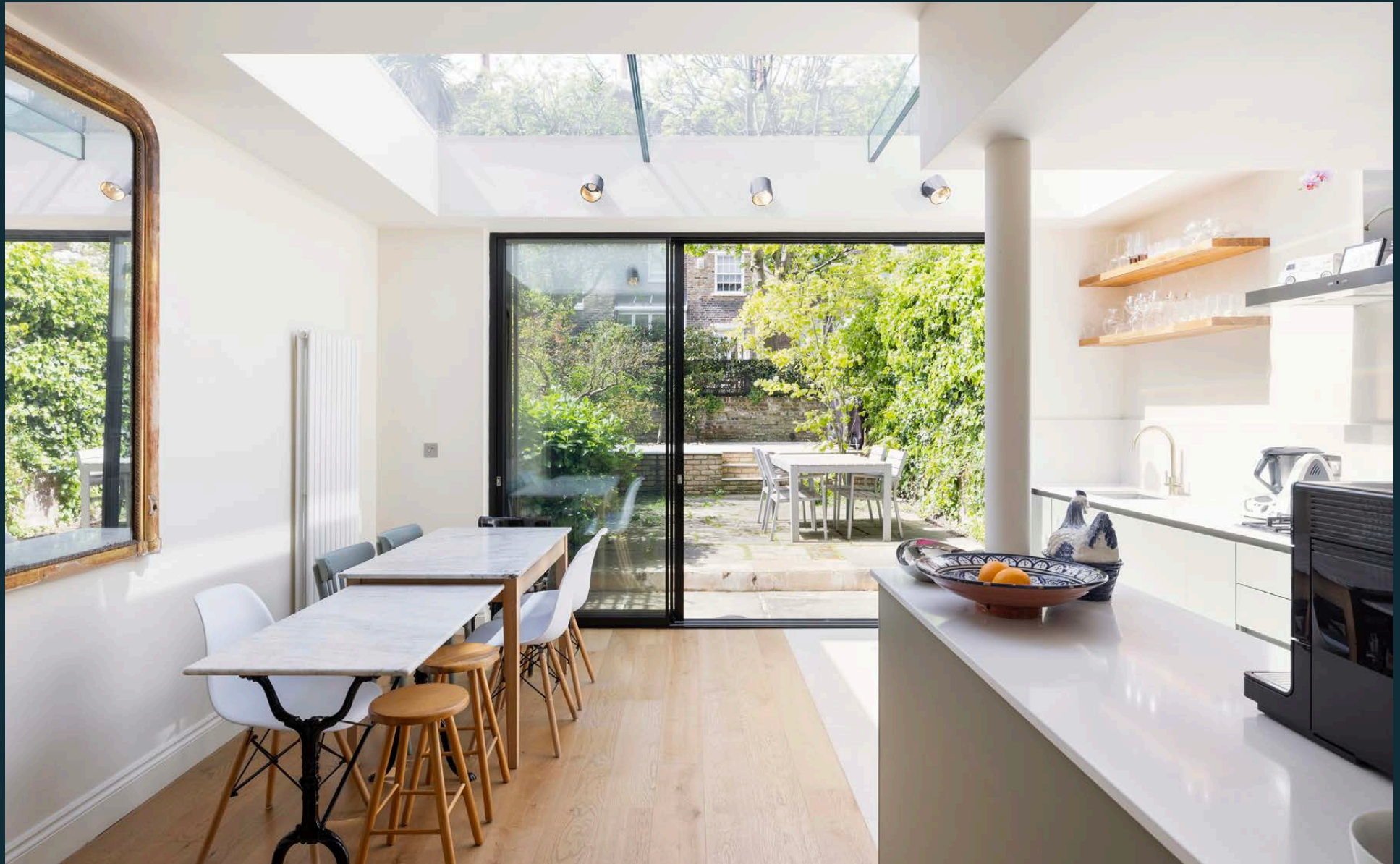


DOMUS NOVA



Alexander Street W2
£2,100,000



On a quintessential Notting Hill street, this three-bedroom garden duplex is bound by uplifting tones, an abundance of glass and modish details.

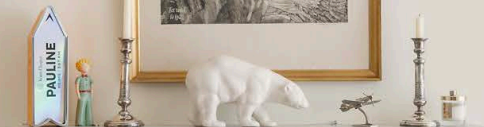
Alexander Street's rows of stock-brick heritage townhouses paints a sophisticated picture — echoed by refined design at this recently renovated garden duplex. Complementing striking architectural innovation by Emilie Mauran and Tania Udaondo, interiors by Mon Concept Habitation capitalise on light and space.

The home's social heart is spread across the lower-ground floor, introduced by a smart staircase with subtly carved balustrades. Warm wood floors draw you from the living area into an open-plan kitchen and dining room, which is bathed in natural light through a large glass roof and floor-to-ceiling picture window. Designed by Magnet Kitchens, muted sage-green cabinets are paired with exposed wooden shelves and smooth marble worktops, affording a calm and organic feel to the kitchen. Slide open the glass doors to reveal the private garden, split between two levels and surrounded with rich foliage and flower bushes.









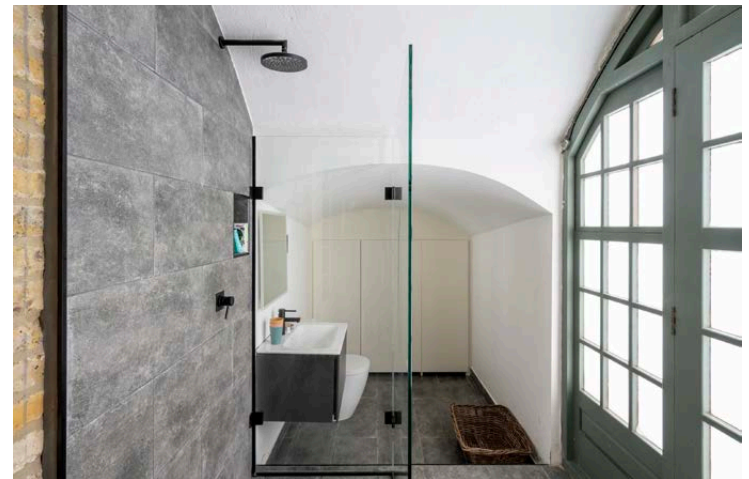
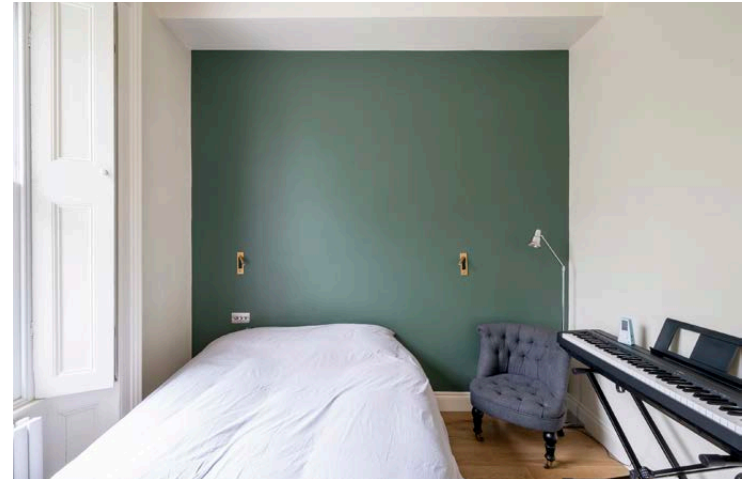
Upstairs, the principal bedroom enjoys views of the garden through a full-height picture window that matches the floor below. It's a serene setting with contrasting cream and navy blue walls – finished with environmentally conscious paint by Argile Peinture. Custom-made wardrobes and bookshelves offer minimalist storage options. One of the guest bedrooms is also located on the ground floor, and shares a family bathroom with the principal. Salmon-pink herringbone tiles wrap around the bath, while greyscale hexagonal tiles span the floors and dual vanity. An additional guest bedroom is located on the lower-ground floor, served by a shower room.

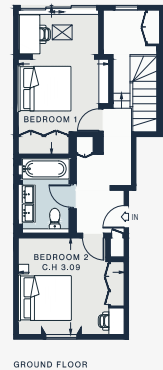
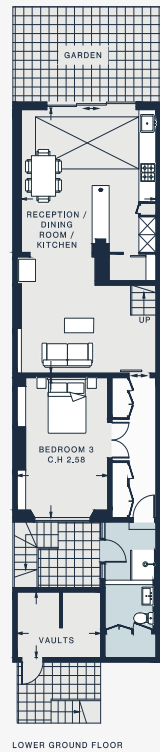
Alongside renewed interior design, the property benefitted from a full renovation in 2022, including upgraded services, an electrical rewire, new windows and a new boiler.











RECEPTION / DINING ROOM / KITCHEN
29'5 x 15'6 (8,9m x 4,7m)

BEDROOM 2
16'6 x 10'6 (5,0m x 3,2m)

BEDROOM 1
15'5 x 10'6 (4,7m x 3,2m)

VAULTS
10'2 x 7'3 (3,1m x 2,2m)

BEDROOM 3
12'4 x 10'9 (3,7m x 3,2m)

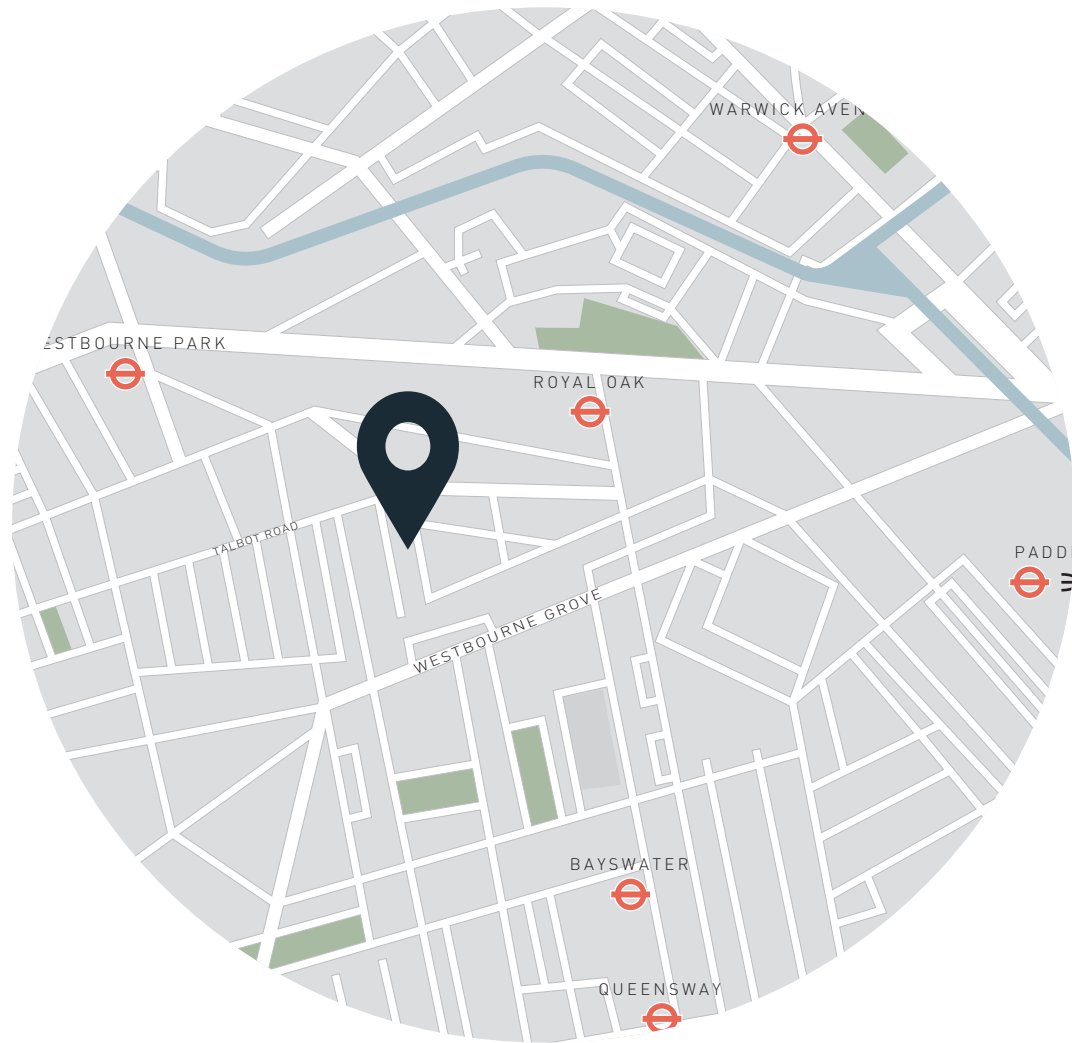
Approx. Gross Internal Area = 1,302 sq ft / 121 sq m
Vault = 70 sq ft / 6,5 sq m
Total = 1,372 sq ft / 127,5 sq m

Floor plans are for illustrative purposes only and not to scale. Compliant with RICS code of measuring practice.

Property Details

Open-plan kitchen, reception and dining room
Principal bedroom
Two guest bedrooms
Two bathrooms
Utility room
Private garden
City of Westminster

Approx. 1,302 sq ft / 120 sq m
EPC - E
Tenure: Leasehold
Length of Lease: 115 years
Council Tax Band: F



Location

Alexander Street is lined with leafy trees and period properties, tucked away in a residential enclave just minutes from fashionable Westbourne Grove. Brunch is best at Beam, Sunday in Brooklyn and Granger & Co.; workout spots are numerous, from Bodyism to Pyscle and Barrecore. Three of Notting Hill's best nurseries are within close distance: Strawberry Fields, Weatherby School and Pembridge Hall. For a tranquil walk, Kensington Gardens are a short walk away. End the day with a drink (and oysters) at local favourite, The Cow.

Royal Oak – 5 mins (Circle, Hammersmith & City)

Specialising in London
and Ibiza's design-led homes

Let's talk
020 7221 7817
sales@domusnova.com
domusnova.com

The particulars above are a guide, not an offer or contract. Descriptions, photographs and plans are not statements or representations of fact. Measurements are approximate and not to scale. Prospective purchasers must verify the accuracy of the information within the particulars. Domus Nova does not give any representations or warranties; nor represent the Seller legally. Domus Nova has no liability, for any costs, losses or expenses incurred by the Seller or a prospective buyer relating to the sales and buying transaction.

Our Sales Disclaimer, trading names and privacy policy on how your data is processed and used is found in full on our website in our [Privacy Statement](#).

© Domus Nova 2024. All rights reserved.