

DOMUS NOVA

Alexander Street

Bayswater W2

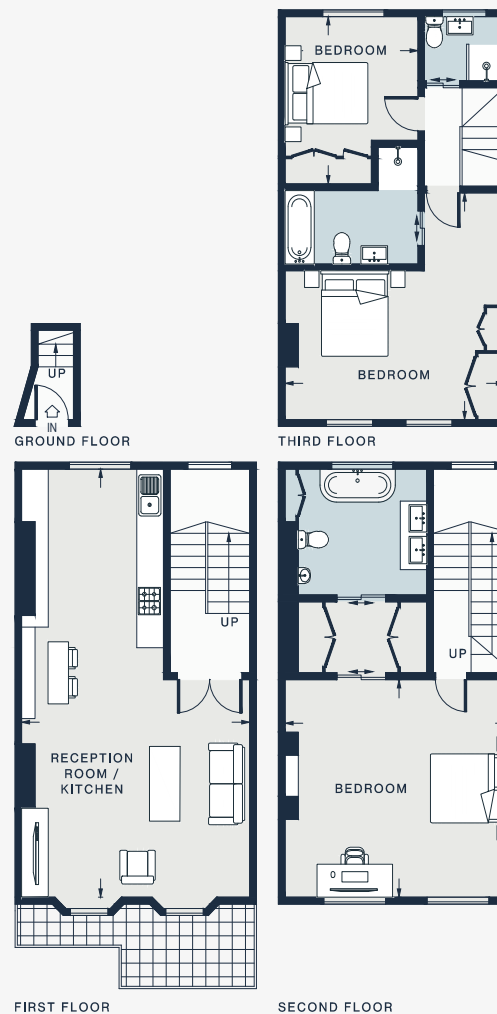
APPROXIMATE GROSS INTERNAL AREA

1,529 sq ft / 142.1 sq m

020 7727 1717

domusnova.com

LONDON | IBIZA



RECEPTION ROOM / KITCHEN

30'8 x 16'9 (9.35m x 5.11m)

BEDROOM

12'0 x 9'7 (3.66m x 2.92m)

BEDROOM

17'2 x 15'7 (5.23m x 4.75m)

BEDROOM

16'2 x 16'2 (4.93m x 4.93m)

Approx. Gross Internal Area = 1529 sq ft / 142.1 sq m

Floor plans are for illustrative purposes only and not to scale. Compliant with RICS code of measuring practice. Furniture layouts are indicative only. This property may be furnished, part-furnished or unfurnished. Please refer to your agent for details.