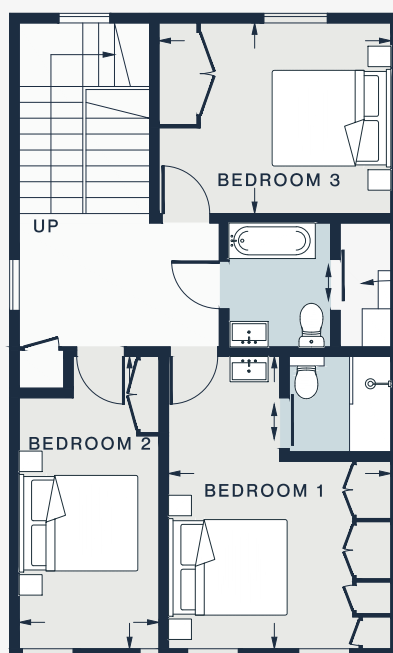
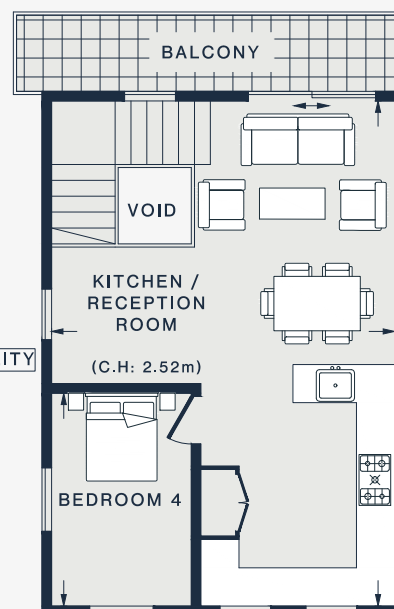


FIRST FLOOR



SECOND FLOOR



THIRD FLOOR

KITCHEN /  
RECEPTION ROOM  
26'2 x 17'7 (7.9m x 5.3m)

BEDROOM 1  
15'1 x 11'6 (4.6m x 3.5m)

BEDROOM 2  
15'1 x 7'3 (4.5m x 2.2m)

BEDROOM 3  
12'0 x 9'11 (3.6m x 3.0m)

BEDROOM 4  
11'1 x 7'1 (3.3m x 2.1m)

Approx. Gross Internal Area = 1149 sq ft / 106.7 sq m

Floor plans are for illustrative purposes only and not to scale. Compliant with RICS code of measuring practice.  
Prepared for Domus Nova. Copyright © All Rights Reserved.