

DOMUS NOVA



Aldridge Road Villas W11 – £6,500,000

In partnership with **BARNES**
INTERNATIONAL REALTY



Creativity and character collide at this architect-designed, five-bedroom house for sale in Notting Hill.

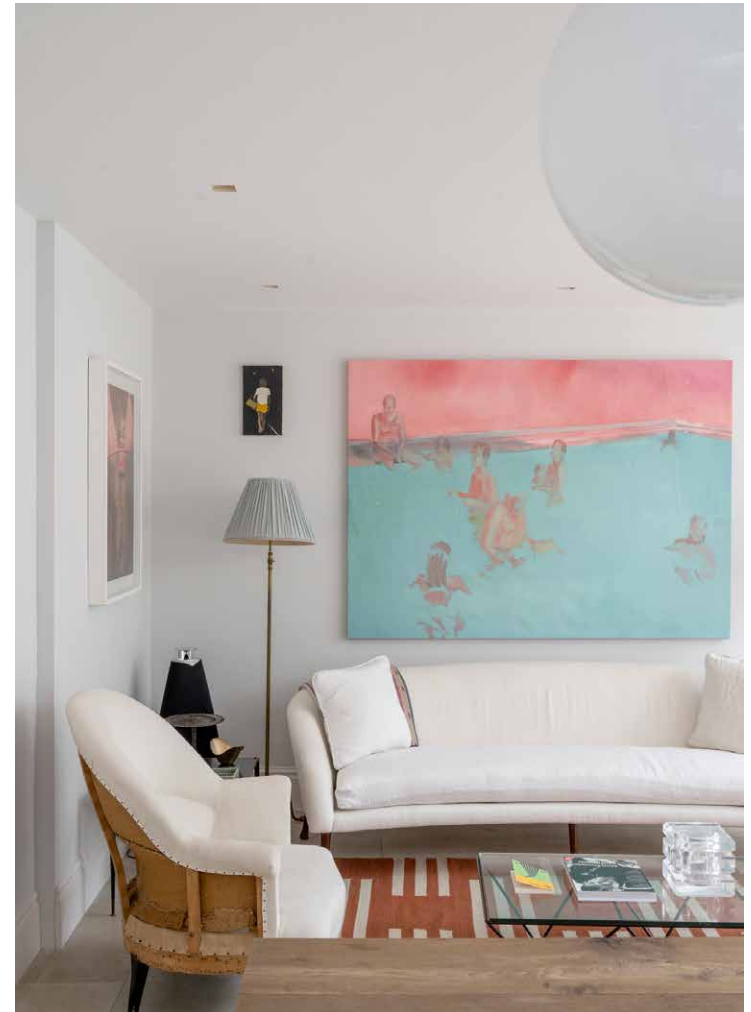
On a quiet corner of Notting Hill, Aldridge Road Villas makes a sophisticated impression with its blonde-brick and beige stucco exterior. Inside, architectural interventions by Ben Smith Architects has reintroduced light and space across four impressive floors.

Past a refined façade, a spacious entrance gives way to a reception room of striking proportions. Vibrantly illuminated from a large bay window, neutral tones showcase an array of heritage features from corncicing to architrave. Light wooden flooring spans the space, sweeping through into an additional lounge. A character-filled setting to recline or entertain, natural light is afforded through two sets of floor-to-ceiling French doors.

Across the lower ground floor, dialled-back design styles a sprawling open-plan kitchen, dining and reception room. Conceived with a soothing material palette, a bespoke kitchen pairs soft sage cabinetry with Fisher & Paykel appliances, while a trio of lights crown an expansive wooden island. Beyond, two monolithic skylights flood natural light across a spacious dining area. From here, panels of glazing draw back to a picturesque private garden.







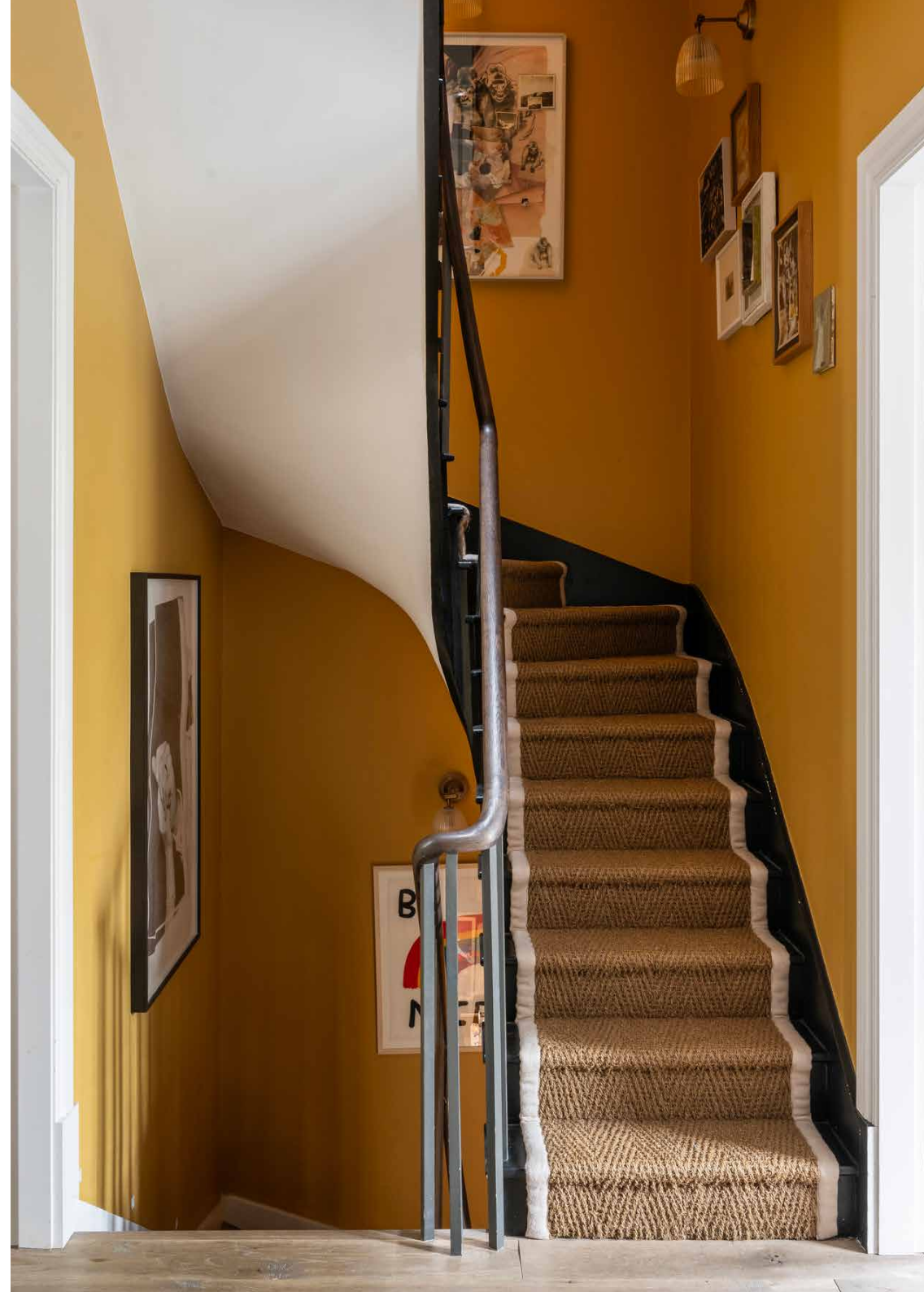






Inhabiting the entire first floor, a sprawling principal bedroom suite features a peaceful palette and generous light, plus a wall of fitted wardrobes. An indulgent dressing area occupies the opposite side, leading the way to a luxurious en suite bathroom fitted with a bathtub, rainfall shower and dual vanity.

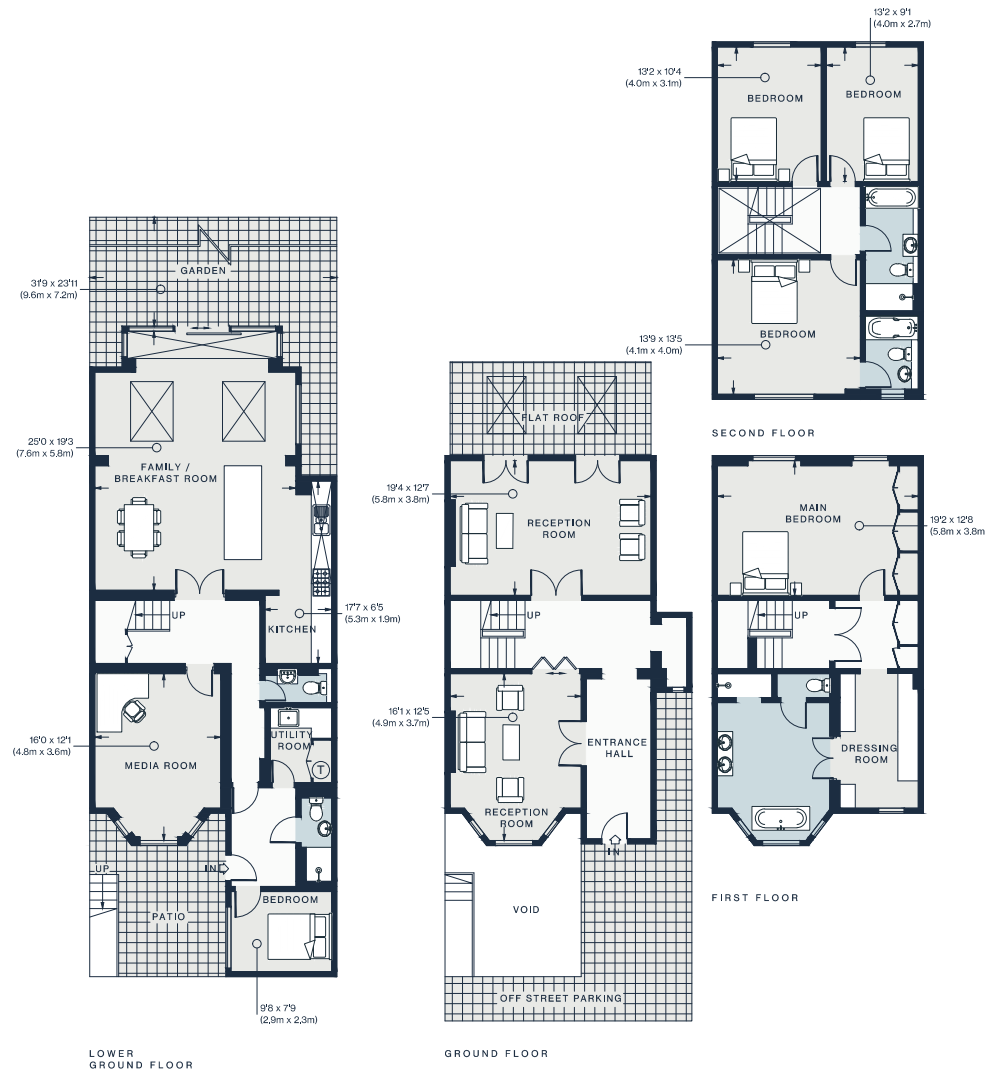
Three further bedrooms sit on the second floor, each softly lit from sash windows. One benefits from its own en suite bathroom, while the others share access to a family bathroom. One further bedroom can be found on the flower ground floor, conveniently served by an adjacent shower room.











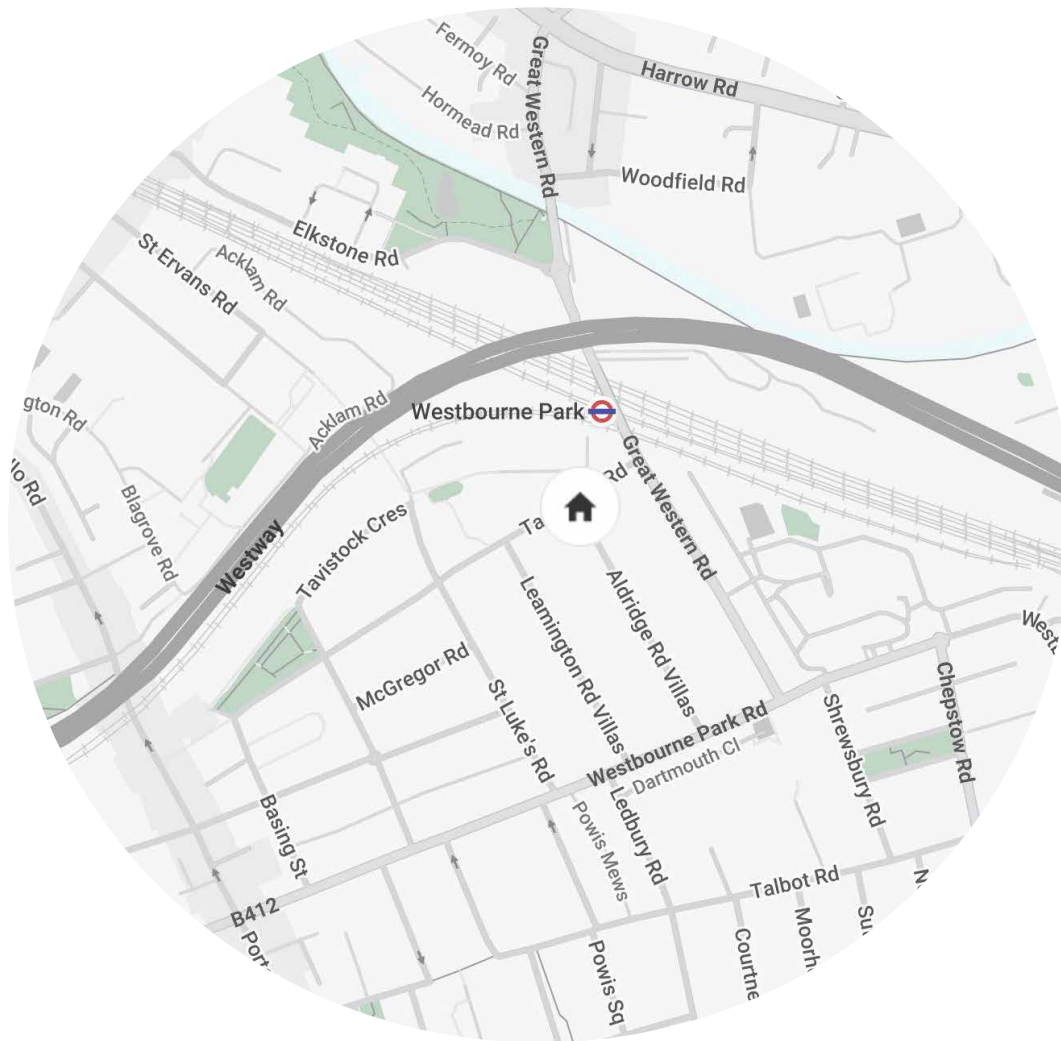
Approx. Gross Internal Area = 3,208 sq ft / 298.0 sq m

Floor plans are for illustrative purposes only and not to scale. Compliant with RICS code of measuring practice.

Property Details

Open-plan kitchen, dining and reception room
 Two reception rooms
 Media room
 Principal bedroom suite with dressing room
 Guest bedroom suite
 Three further bedrooms
 Family bathroom
 Shower room
 Utility room
 Private garden
 Off street parking

Approx. 3,208 sq ft / 298 sq m
 EPC - C
 Tenure: Freehold
 Council Tax Band: H



Location

Within strolling distance of Golborne Road and Portobello Market, Aldridge Road Villas is moments away from the best of Notting Hill. Spend the weekends browsing the antiques and food stalls, or with a walk along the canal to Little Venice, picking up supplies from Golborne Deli & Wine Store on the way back. You're spoilt for choice for dining options here – Straker's, Laylow and Caractère are all on the doorstep. Offering live music nights and lazy Sunday movies, complete your evening at neighbourhood staple, The Pelican.

Westbourne Park – 2 mins (Circle, Hammersmith & City)

Who — we are



Forward-thinkers in property, design and culture, we're an estate agency that hits refresh.

Domus Nova was born out of a desire to do things differently; to break the traditional agency model and focus on design-led homes in London and Ibiza, all while delivering the highest levels of personal service.

Our story starts in the nineties when we founded Notting Hill's first boutique agency – and we continue to open the doors to the most remarkable spaces, revealing them to our like-minded community.

We want to help you live better – and believe considered design can do that. That's why we remain committed to building on our legacy, in collaboration with BARNES International, an established agency with a market-leading presence in 22 countries.

Uniting our local insight and curated portfolio with BARNES International's expansive reach, we can facilitate the best opportunities in not only London and Ibiza, but also across Europe, the US and further afield – whether that's a château in the South of France, a penthouse in New York, or a chalet in the Swiss Alps.



DOMUS NOVA

Specialising in London
and Ibiza's design-led homes

Let's talk
020 7221 7817
sales@domusnova.com

The particulars above are a guide, not an offer or contract. Descriptions, photographs and plans are not statements or representations of fact. Measurements are approximate and not to scale. Prospective purchasers must verify the accuracy of the information within the particulars. Domus Nova does not give any representations or warranties; nor represent the Seller legally. Domus Nova has no liability, for any costs, losses or expenses incurred by the Seller or a prospective buyer relating to the sales and buying transaction.

Our Sales Disclaimer, trading names and privacy policy on how your data is processed and used is found in full on our website in our [Privacy Statement](#).

© 2025 Domus Nova in partnership with BARNES International. All rights reserved.

In partnership with
BARNES
INTERNATIONAL REALTY