

DOMUS NOVA



Aldridge Road Villas W11 – £5,500,000

In partnership with **BARNES**
INTERNATIONAL REALTY



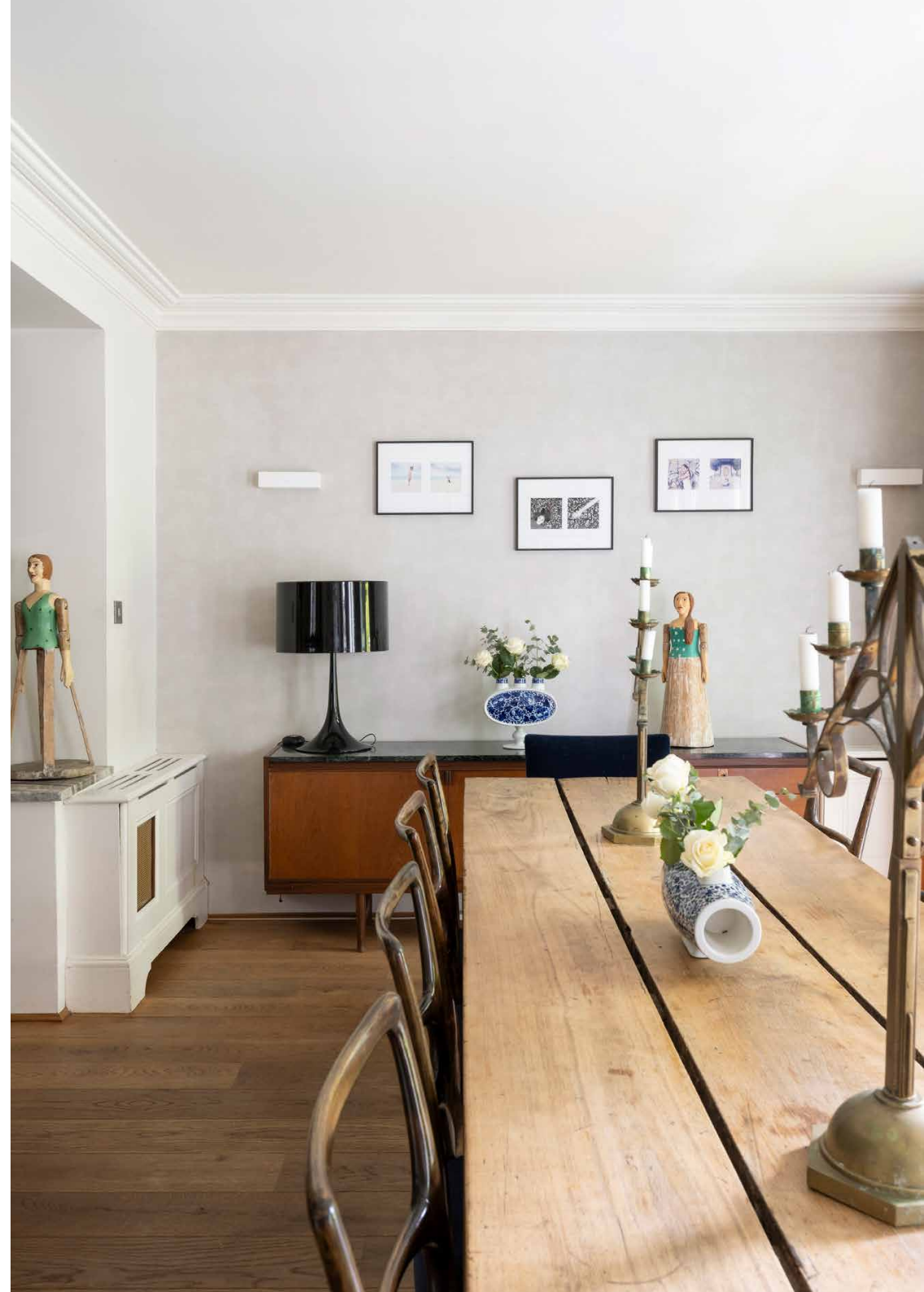
Period elegance meets a family-friendly footprint at this six-bedroom semi-detached townhouse for sale.

A handsome Victorian home arranged over five floors, Aldridge Road Villas has space in abundance. Off the entrance hall, two formal reception rooms make an impression. One faces southwest, basking in natural light through a large bay window. Period features have been well preserved – from the grand stone fireplace to the ornate cornicing. Alcove bookcases capitalise on the generous ceiling height while patterned wallpaper adds an opulent finish. Beyond, a second space is painted in oatmeal tones, and opens onto a decked terrace via two sets of French doors.





Below, the lower ground floor is the social hub of the home. A large, classic-style kitchen, dining and reception room is configured with family life in mind. Wooden floors, a range cooker and shaker cabinetry create a warm, country kitchen feel. Gather around the breakfast bar or in the dining area, which leads to a low-maintenance split-level patio garden. A versatile adjoining room would make an ideal TV snug or home office.







A large, classic-style kitchen, dining and reception room is configured with family life in mind.





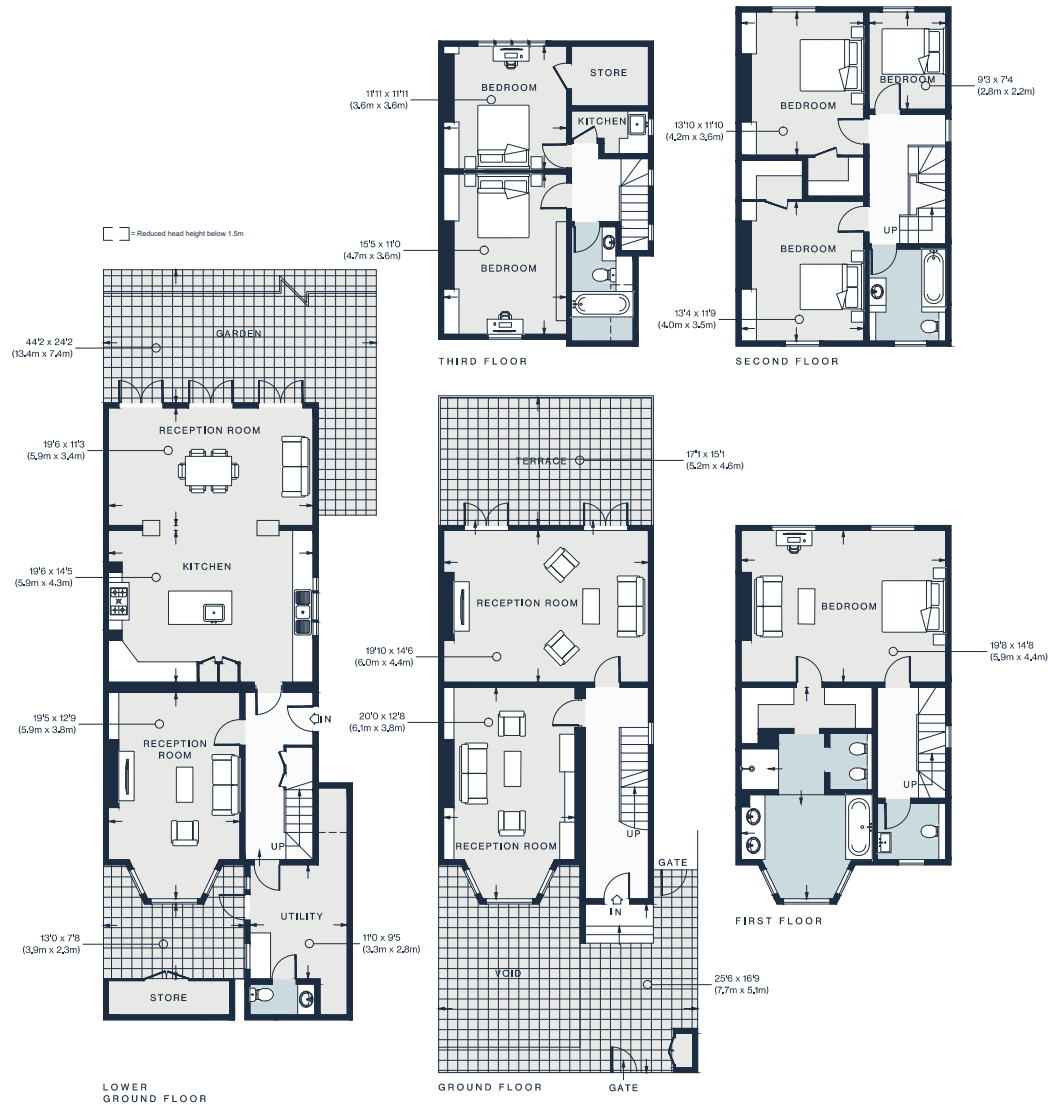




The first floor is dedicated to a standout principal suite. Finished in soothing blue hues, the sleeping area overlooks the garden, while a walk-in wardrobe flows through to a spacious en suite bathroom complete with a separate shower, bathtub and twin vanity unit. Five further bedrooms and two bathrooms are found on the second and third floors, four of which come with fitted storage. There's also a small kitchenette, ideally located for morning coffees in bed.







Property Details

- Two formal reception rooms with period features
- Open-plan kitchen and dining room
- Additional family room
- Principal bedroom suite occupying its own floor
- Five further bedrooms
- Two further bathrooms and cloakroom
- Third-floor kitchenette
- Terrace and split-level garden
- Utility room and cloakroom
- City of Westminster

Approx. 3,653 sq ft / 339 sq m

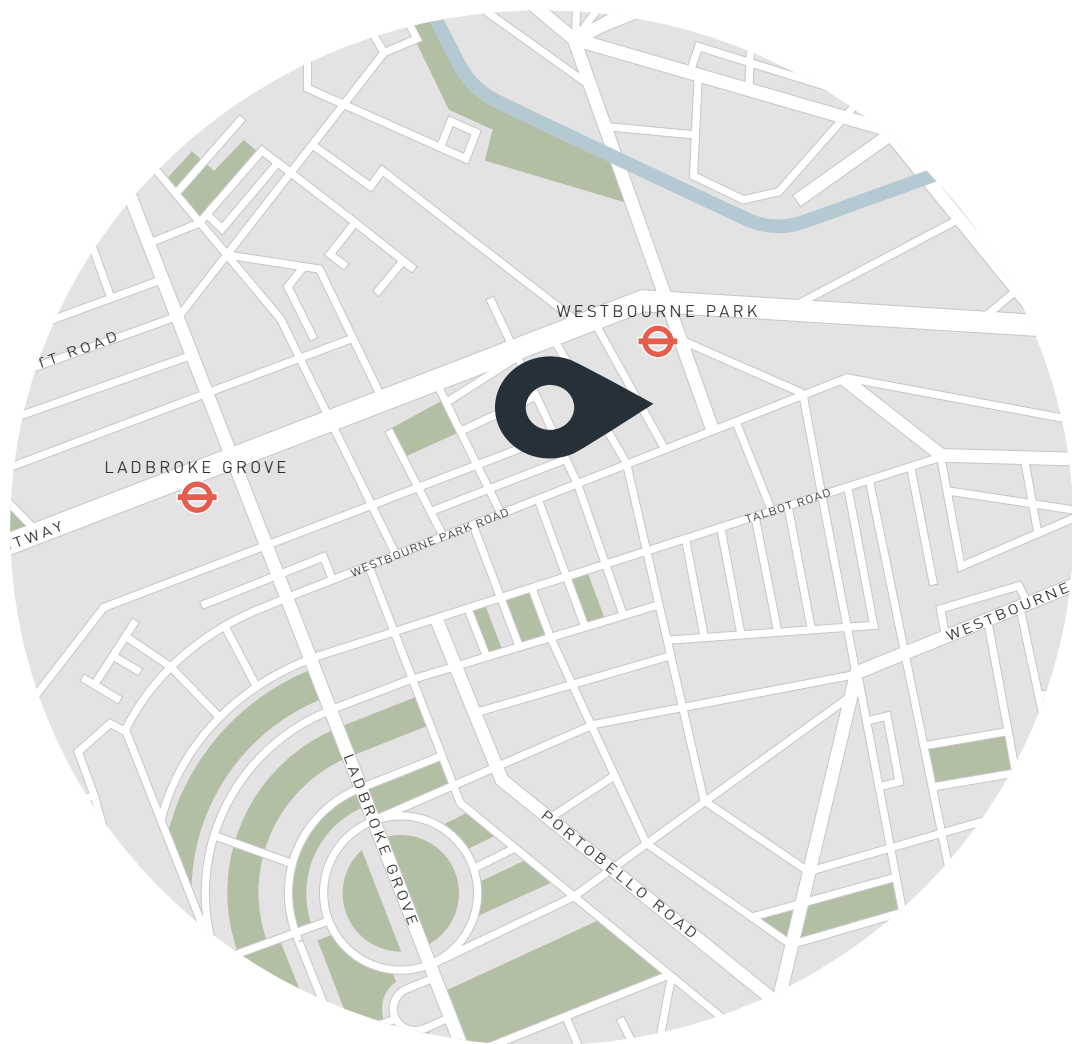
EPC=D

Tenure: Freehold

Council Tax Band: H

Approx. Gross Internal Area = 3,653 sq ft / 339.0 sq m (Including Store)

Floor plans are for illustrative purposes only and not to scale. Compliant with RICS code of measuring practice.



Location

Equidistant from Golborne Road, Portobello Road and Westbourne Grove, Aldridge Road Villas sits in an enviable location. Spend the weekends browsing the local antiques and food stalls, or strolling along the canal to Little Venice, picking up supplies from Golborne Deli & Wine Store on the way back. The best of the neighbourhood's restaurants are also on the doorstep, from Dorian to The Ledbury and Straker's. You're spoilt for choice when it comes to pubs too – take your pick from The Pelican, The Cow and The Westbourne.

Westbourne Park – 4 mins (Circle, Hammersmith & City



Who ——— we are

Forward-thinkers in property, design and culture, we're an estate agency that hits refresh.

Domus Nova was born out of a desire to do things differently; to break the traditional agency model and focus on design-led homes in London and Ibiza, all while delivering the highest levels of personal service.

Our story starts in the nineties when we founded Notting Hill's first boutique agency – and we continue to open the doors to the most remarkable spaces, revealing them to our like-minded community.

We want to help you live better – and believe considered design can do that. That's why we remain committed to building on our legacy, in collaboration with BARNES International, an established agency with a market-leading presence in 22 countries.

Uniting our local insight and curated portfolio with BARNES International's expansive reach, we can facilitate the best opportunities in not only London and Ibiza, but also across Europe, the US and further afield – whether that's a château in the South of France, a penthouse in New York, or a chalet in the Swiss Alps.



DOMUS NOVA

Specialising in London
and Ibiza's design-led homes

Let's talk

020 7221 7817

sales@domusnova.com

The particulars above are a guide, not an offer or contract. Descriptions, photographs and plans are not statements or representations of fact. Measurements are approximate and not to scale. Prospective purchasers must verify the accuracy of the information within the particulars. Domus Nova does not give any representations or warranties; nor represent the Seller legally. Domus Nova has no liability, for any costs, losses or expenses incurred by the Seller or a prospective buyer relating to the sales and buying transaction.

Our Sales Disclaimer, trading names and privacy policy on how your data is processed and used is found in full on our website in our [Privacy Statement](#).

© 2026 Domus Nova in partnership with BARNES International. All rights reserved.

In partnership with
BARNES
INTERNATIONAL REALTY