

DOMUS NOVA



Addison Gardens W14
£725.00 p/w



Tucked behind the regal red-brick façades of Addison Gardens, this ground-floor apartment is a study in considered design. Awash with natural light, its interiors balance contemporary craftsmanship with classic proportions.

The heart of the home is the open-plan kitchen and reception room, where three tall sash windows draw light to every detail. A bespoke mint-green kitchen by The White Kitchen Company anchors the space, pairing Monsanto quartz counters with Fired Earth tiles and a Rangemaster cooker. Wooden floors transition seamlessly into soft carpet, zoning a generous living and dining area. A built-in storage unit stretches up towards the lofty ceiling – equal parts function and finesse.









“

A sense of calm defines the principal bedroom, where whitewashed walls and intricate cornicing frame a space curated for rest.

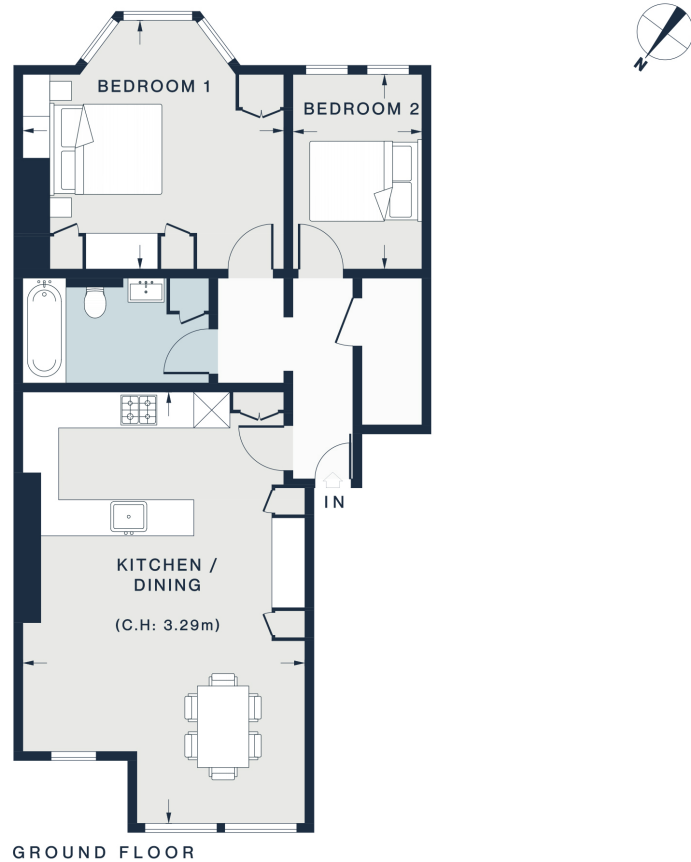


A sense of calm defines the principal bedroom, where whitewashed walls and intricate cornicing frame a space curated for rest. Bespoke joinery shapes a tailored sleeping nook, while an open wall of shelving lends itself to a library or neatly displayed essentials. A built-in window seat – complete with pull-out drawers – is a perfect nook for quiet moments. The second bedroom continues the restful aesthetic, bathed in soft natural light. Serving both rooms, a family bathroom is a masterclass in understated luxury: think sleek grey panelling, glossy Mandarin Stone tiles, and a rainfall shower over the bathtub.









Property Details

Open-plan kitchen, dining and reception room
 Principal bedroom with bespoke storage
 Guest bedroom
 Family bathroom
 Intercom entry system
 London Borough of Hammersmith & Fulham

Approx. 757 sq ft / 70.3 sq m
 EPC = C
 Council Tax Band = E
 Deposit = £3,625

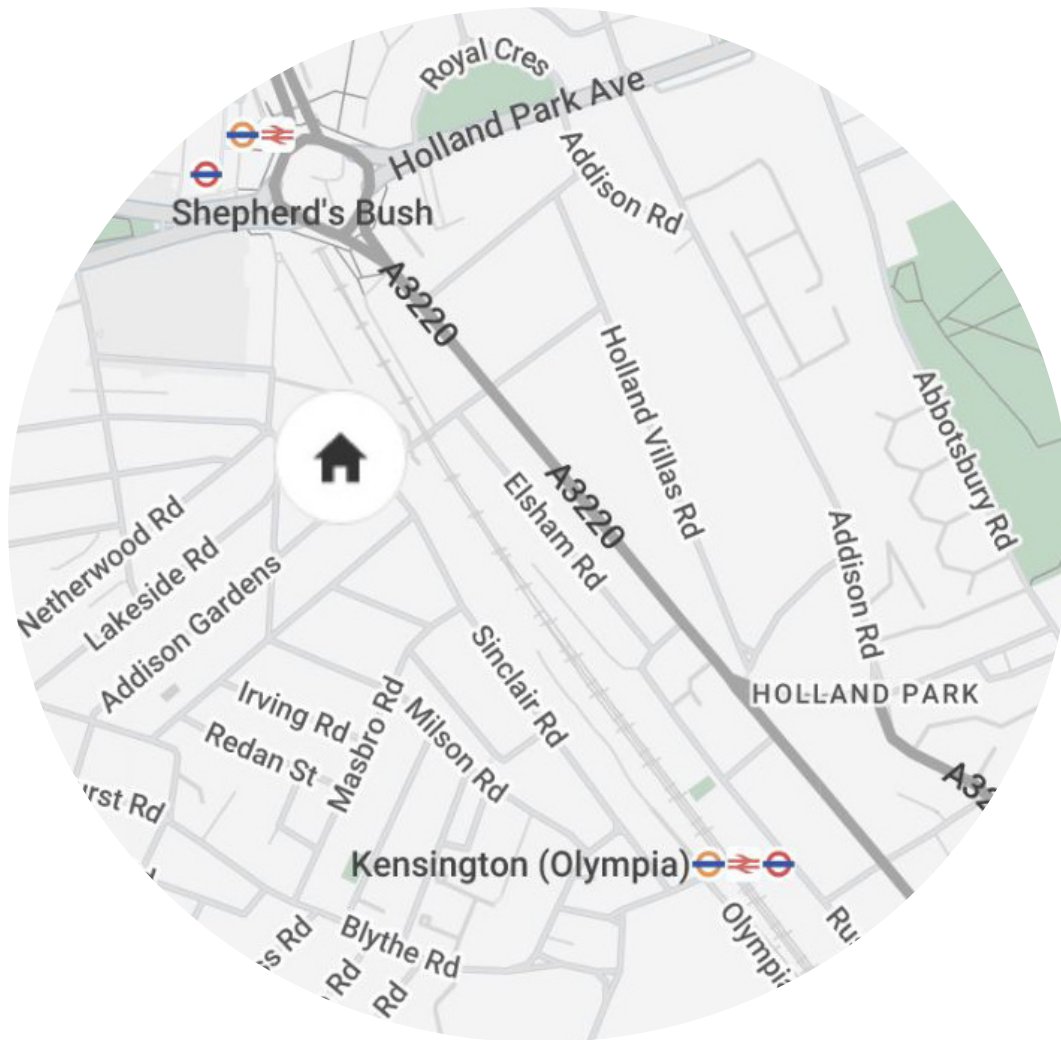
KITCHEN / DINING
 23'7 x 15'5 (7.2m x 4.7m)

BEDROOM 1
 14'3 x 13'7 (4.3m x 4.1m)

BEDROOM 2
 10'8 x 7'1 (3.2m x 2.1m)

Approx. Gross Internal Area = 757 sq ft / 70.3 sq m

Floor plans are for illustrative purposes only and not to scale. Compliant with RICS code of measuring practice.



Location

A residential street close to Shepherd Bush's best-loved hotspots. Spend afternoons browsing at Westfield Shopping Centre; find Louis Vuitton, Prada and Mulberry at The Village. Wormholt Park and Shepherd's Bush Green are both nearby. Right on the green, Shikumen at the Dorsett is your spot for Chinese fare. Stop by The Hoxton for a drink or make an evening of it at The O2 Shepherd's Bush. Just slightly further afield, White City House benefits from close proximity to renowned restaurants Waka, Bluebird and Michelin-starred Endo at The Rotunda.

Shepherd's Bush - 8 mins (Central)

Kensington - 9 mins (District, Mildmay, Southern)

Specialising in London
and Ibiza's design-led homes

Let's talk
020 7727 1717
lettings@domusnova.com
domusnova.com

The property particulars are a guide not statements. Descriptions, photographs, and plans are for guidance and should be checked by the prospective tenant. The Property is offered "subject to contract and references". No warranties, representations, or Tenancy is given by Domus Nova. Expenses incurred by a prospective tenant will not be reimbursed if the Landlord withdraws prior to the Tenancy Agreement being signed, dated and exchanged and cleared funds received. Furniture and other items shown in a property at viewing may belong to a current tenant. The prospective tenant should verify in writing which fixtures and fittings forms part of the Tenancy. Our full lettings disclaimer together with trading names and our [Privacy Policy](#) is shown on our website