

DOMUS NOVA



Can Tres, South East Ibiza
Price on application



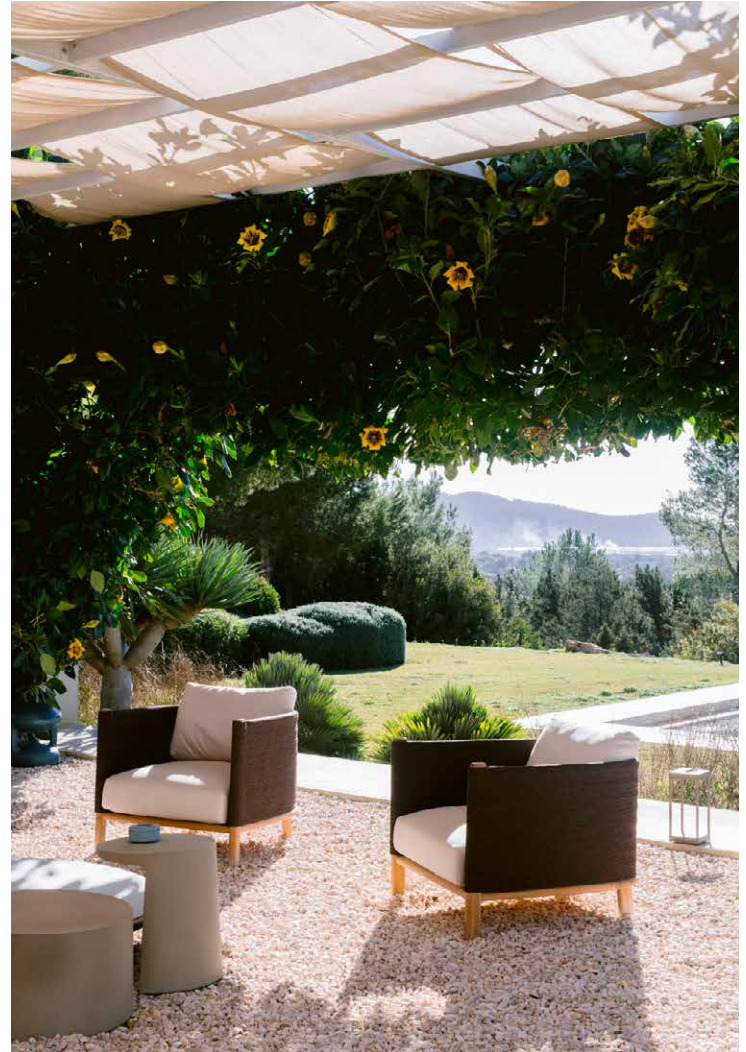
Facing south towards Las Salinas and the sea, this eight-bedroom villa unites state-of-the-art design with unspoilt natural surroundings. Enveloped in nature, Can Tres evokes a welcoming sense of seclusion despite its central location – just ten minutes' drive from the Marina. Brought to life by island studio Romano Arquitectos and designer Steve Toueg, this innovative setting strikes a balance between interior and exterior living. Spaces to press pause, plus free-flowing interiors designed for socialising.

Set up for year-round living, a playful architectural approach opens interiors to natural light and air, drawing in the sounds, sights and scents of the Ibicencan landscape. Across the ground level, floor-to-ceiling sliding windows give way to the garden, designed alongside Terravita's Jason Watson Todd. Grounds of 20,000 square metres play host to chill-out zones and outdoor dining spots, plus a 24m swimming pool at the centre. Soak up Balearic rays from a sunbed on the wide stone paving, or ascend to the rooftop to take in views of the sea and Ibiza town.

















Back indoors, the sprawling double reception room is bound by generous proportions and pared-back design, plus a natural material palette that places emphasis on the landscape – limestone floors, polished cement finishes and Cerejeira cladding. A scenic dining space is bordered by glass for views across the gardens, with a retractable door drawing back to the kitchen. Culinary enthusiasts are taken care of; discover stainless steel counters, monochromatic tiling and built-in Neff appliances.

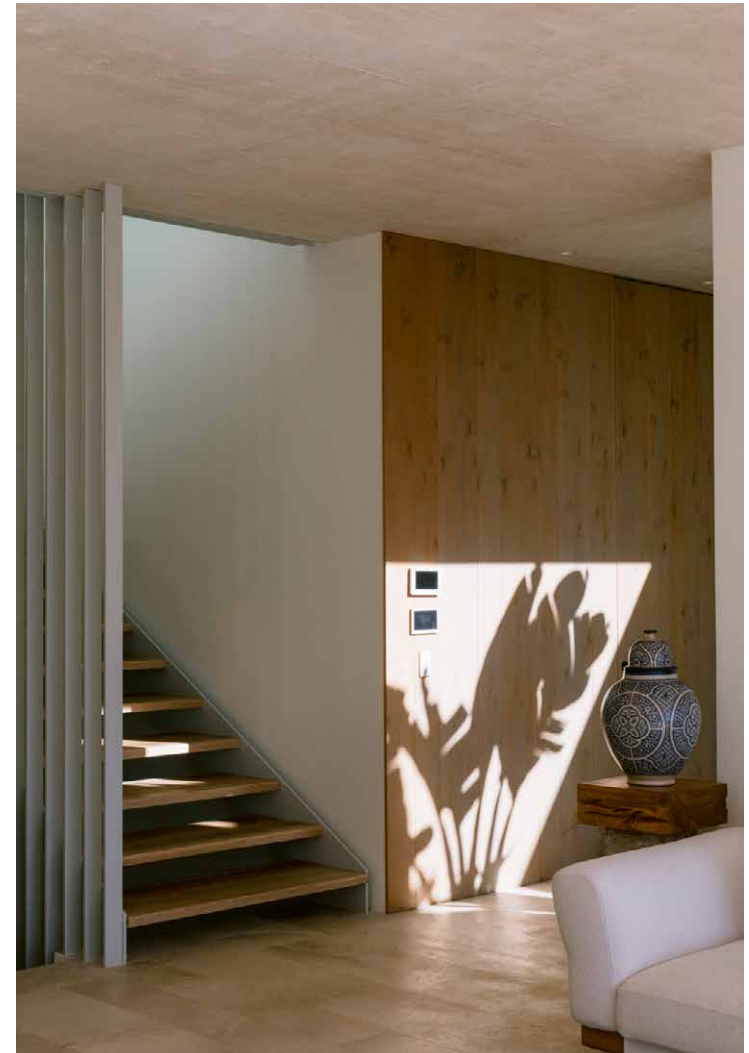












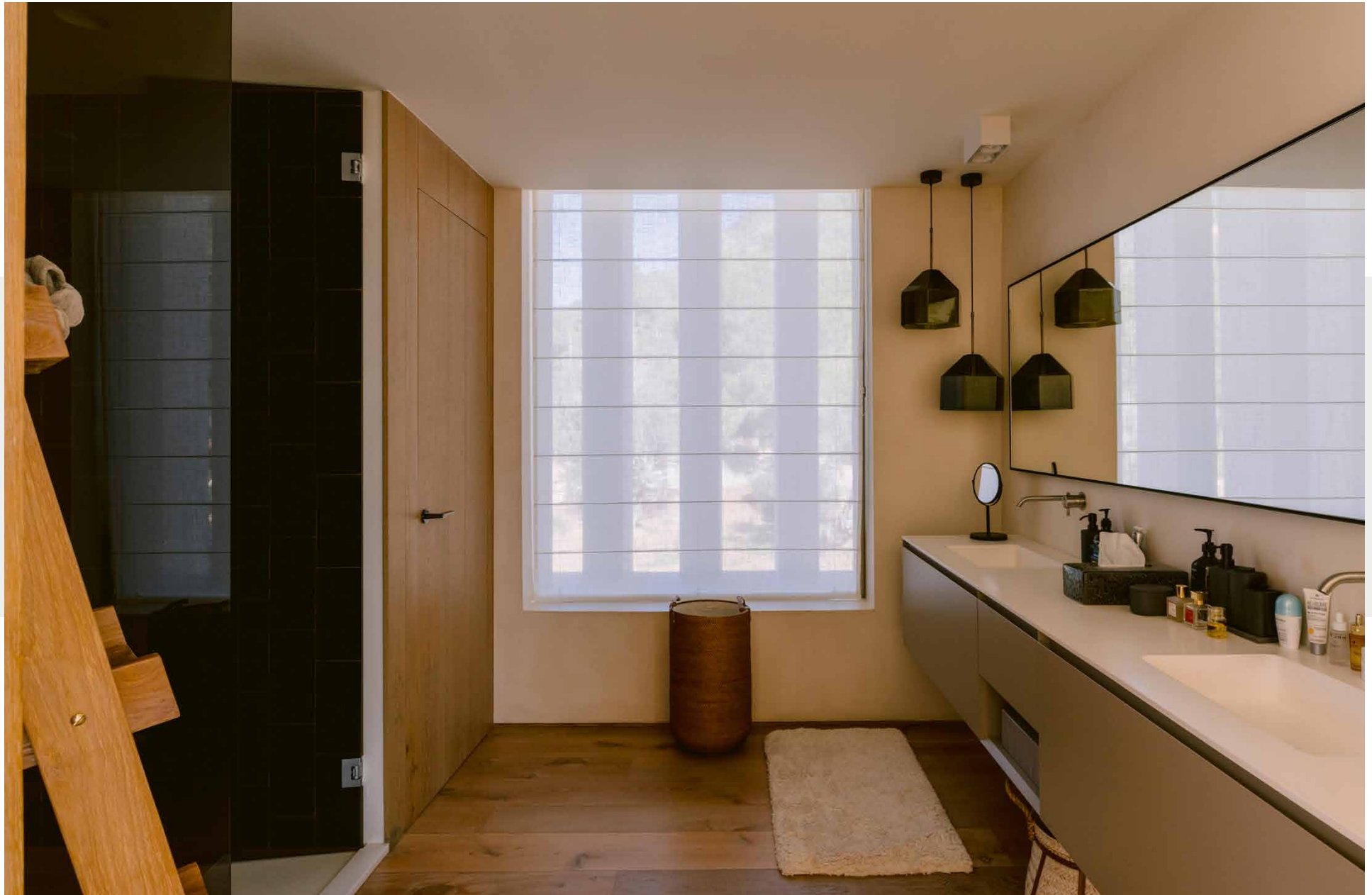
Across the lower ground floor, a glass atrium – featuring a mature olive tree – ensures natural light floods through this level. Discover an enclosed cinema room designed for switching off, and a fully equipped spa. Make the most of a Hammam, sauna and massage room. Elsewhere, meticulous design ensures the villa's eight bedroom suites are conducive to rest and relaxation. Think cool stone tiling, built-in wardrobes, and calming colours. The principal suite sits on the villa's top floor, benefitting from show-stopping views and a dedicated space ideal as a dressing room or study.

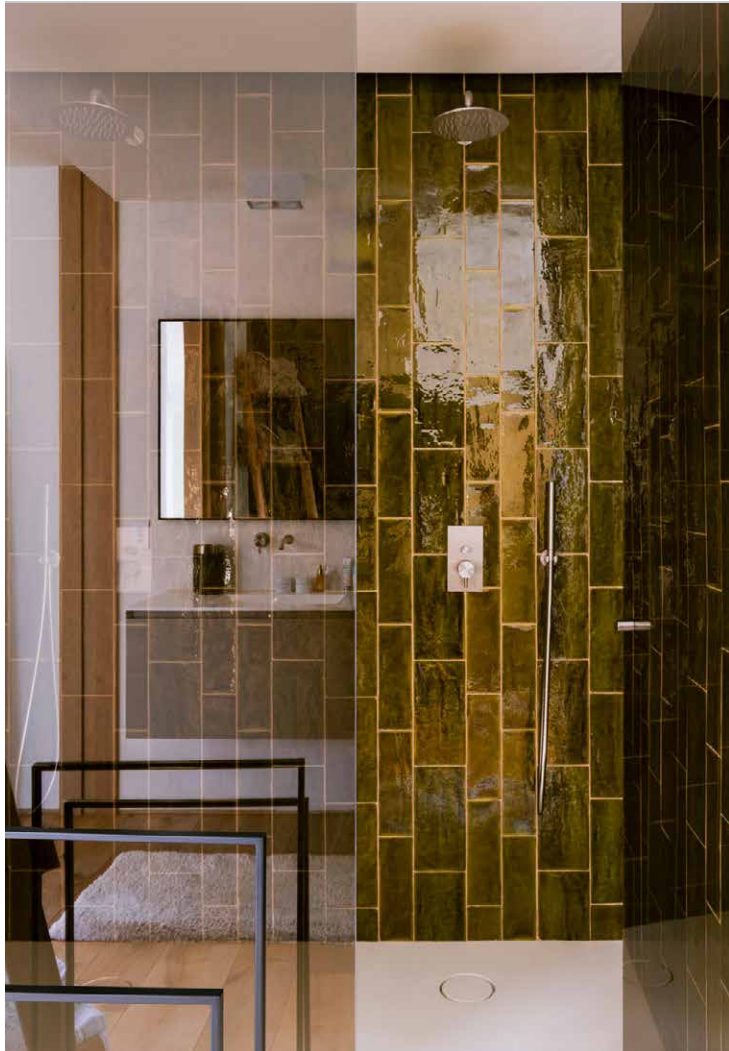






















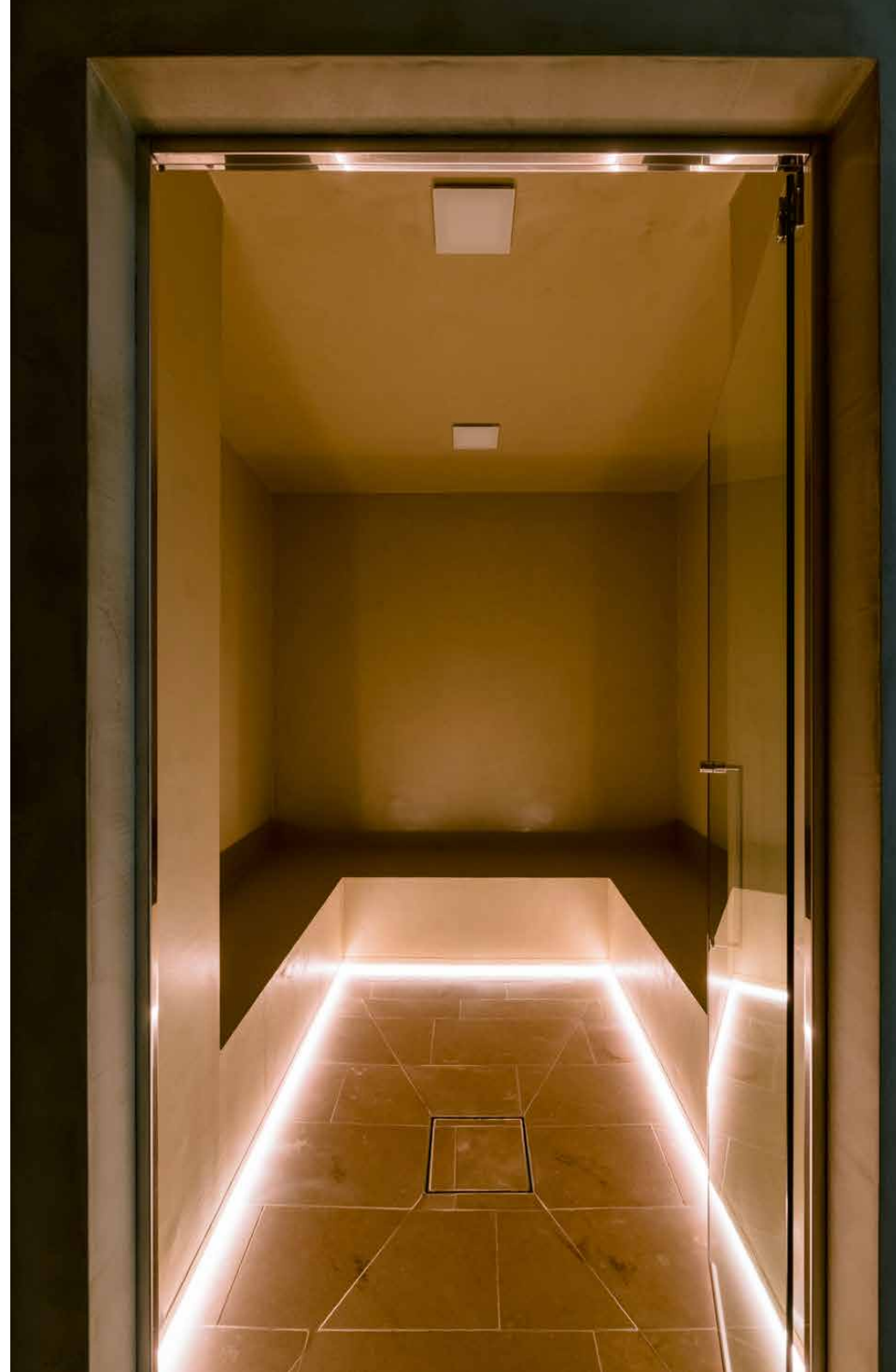


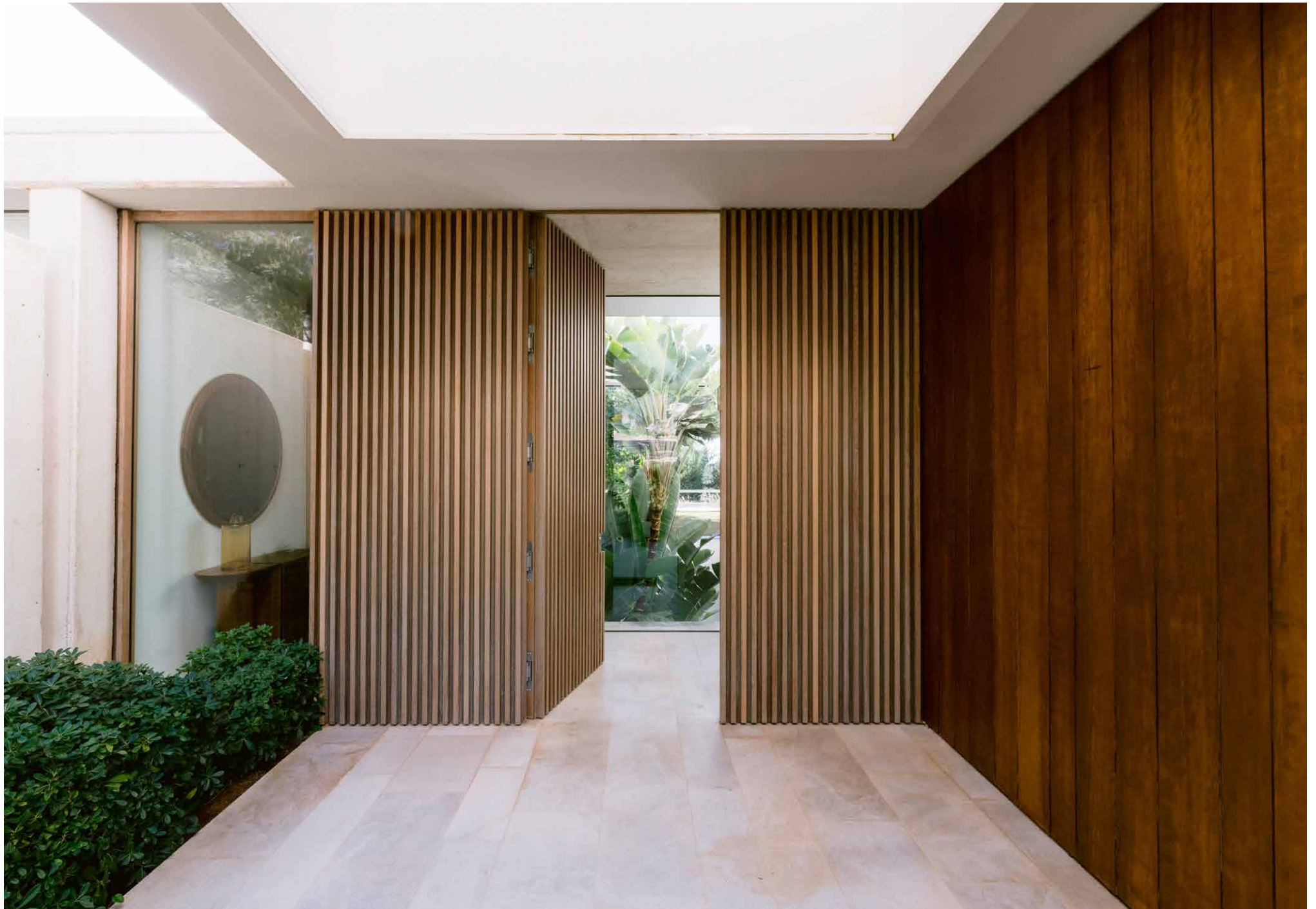
















Property Details

Recently fully renovated

Architecture by Jaime Romano and design by Steve Toueg

Landscaping by Terravita

Sea views

Eight bedroom suites

Two reception rooms

Cinema room

Spa and massage room

24-metre swimming pool

Rooftop terrace

Generous gardens

8 bedrooms & 9 bathrooms

Build size: 788 sq m

Plot size: 20,000 sq m



Location

Set on the calming hillside, Can Tres is a springboard to Ibiza's stunning southwestern coastline – from the sandy shores of Las Salinas to the pine tree-backed Cala Jondal and the unspoilt bay of Porroig. Far enough from the buzz of Ibiza Town to find yourself surrounded by nature, but with renowned beach clubs and nightlife only a short drive away, there's a best of both worlds feel here. At the island's southern tip, Ses Salines Natural Park is home to flamingos and the Sa Caleta ruins.

Ibiza Town (20 mins)
Ibiza Airport (20 mins)
Las Salinas (5 mins)

Specialising in Ibiza and
London's design-led homes

Let's talk
+34 871 515 302
ibiza@domusnova.com
domusnova.com/ibiza

The property particulars are a guide not statements. Descriptions, photographs, and plans are for guidance and should be checked a prospective purchaser or tenant. The Property is offered "subject to contract". No warranties, representations, or Tenancy is given by Domus Nova. Expenses incurred by a prospective tenant or buyer will not be reimbursed if the Landlord or the Seller withdraws prior to the Tenancy Agreement being signed, dated and exchanged and cleared funds received. Further details of the Disclaimer together with trading names and our Privacy Policy is shown on our website The IVA position relating to the property may change without notice.

View our privacy policy on how your data is processed and used. To find out how we process Personal Data, please refer to our Privacy Statement and other notices at [Privacy Statement](#).

© Domus Nova 2025. All rights reserved.