

DOMUS NOVA



Casa Bloom, Santa Gertrudis

€9,500,000



An exquisite, effortlessly stylish, five-bedroom Blakstad villa for sale in a soothing palette of traditional island tones. Contemporary style balances with island heritage perfectly in this Blakstad-designed home. The studio's signature effortless style ensures every room is a masterful combination of local materials and cutting-edge design.

Elegant white pillars frame both the main entrance and the poolside pergola, while simple timber beams create dappled shade for outdoor relaxation. The boundary between indoor and outdoor life is blurred by full width glazing and large skylights over the lounge and kitchen that invite natural light into every space in the home. From the front door, you enjoy views through the house and out onto the Ibiza countryside beyond.

Traditional stone walls and whitewashed exteriors respect the culture and heritage of the island, while progressive design and geometric forms bring a modern sensibility to the home. The ultra-contemporary kitchen features an island so that cooking is a social activity. A long table and benches down by the pool encourage al-fresco meals.























Of the five double bedrooms, three feature private en suites and two have dedicated dressing rooms. Every bedroom enjoys access to private courtyards and gardens around the home, accessed through large glass doors. The master bedroom enjoys the same views as the living space and has its own fireplace for the cooler winter months. The elegant master en-suite has a natural pebble floor, double vanity, walk-in rainfall shower and a modern, egg-shaped bathtub.

Outside, floating loungers invite you to poolside afternoons, and built-in seating in both sun and shade provide perfect nooks for reading. Views from the villa allow you to soak up the breathtaking pine forests and farmland that surround Santa Gertrudis.

Every finish throughout the house has been chosen to the highest quality spec and from this rare, elevated position in the heart of the island the whole of Ibiza is really your oyster.





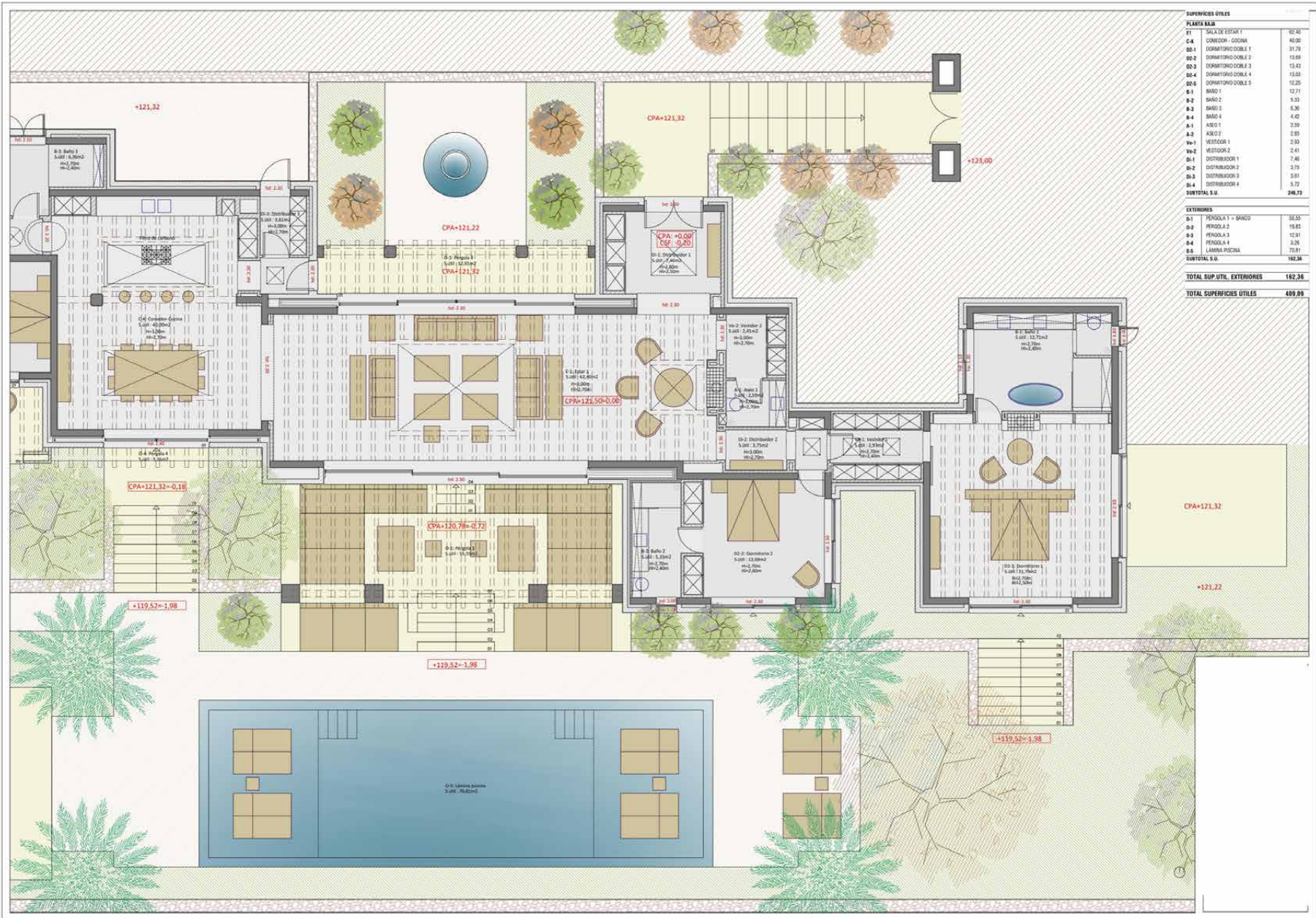












SUPERFICIES ÚTILES	
PLANTA BARRA	
TT	TETRA Y TETRA 1
C-4	CONFECION - COCINA
DD-1	DISTRIBUIDOR DOBLE 1
DD-2	DISTRIBUIDOR DOBLE 2
DD-3	DISTRIBUIDOR DOBLE 3
DD-4	DISTRIBUIDOR DOBLE 4
DD-5	DISTRIBUIDOR DOBLE 5
B-3	BARRO 1
B-2	BARRO 2
B-3	BARRO 3
B-4	BARRO 4
A-1	ASEO 1
A-2	ASEO 2
Ve-1	VESTIBULO 1
Ve-2	VESTIBULO 2
D-1	DISTRIBUIDOR 1
D-2	DISTRIBUIDOR 2
D-3	DISTRIBUIDOR 3
D-4	DISTRIBUIDOR 4
SUBTOTAL S.M.	
246.73	
EXTERIORES	
S-1	PERGOLA 1 - BARRIO
D-2	PERGOLA 2
B-3	PERGOLA 3
A-4	PERGOLA 4
B-5	LAMINA PISCINA
SUBTOTAL S.M.	
162.36	
TOTAL SUP. UTIL. EXTERIORES	
162.36	
TOTAL SUPERFICIES ÚTILES	
409.09	

Ground Floor



SUPERFICIES ÚTILES

PLANTA BAJA		
B1	SALA DE ESTAR 1	82.40
C-K	COMEDOR - COCINA	40.50
D0-1	DORMITORIO DOBLE 1	31.75
D0-2	DORMITORIO DOBLE 2	13.66
D0-3	DORMITORIO DOBLE 3	13.43
D0-4	DORMITORIO DOBLE 4	13.88
D0-5	DORMITORIO DOBLE 5	10.20
B-1	BANIO 1	12.71
B-2	BANIO 2	5.53
B-3	BANIO 3	8.06
B-4	BANIO 4	4.43
A-1	ASEO 1	2.59
A-2	ASEO 2	2.55
V-1	VESTIDOR 1	2.53
V-2	VESTIDOR 2	2.41
D0-1	DISTRIBUIDOR 1	1.40
D0-2	DISTRIBUIDOR 2	3.75
D0-3	DISTRIBUIDOR 3	3.61
D0-4	DISTRIBUIDOR 4	5.73
SUBTOTAL S.U.		248.73
EXTERIORES		
B1	PERGOLA 1 - BANCOS	53.53
B-2	PERGOLA 2	10.83
B-3	PERGOLA 3	12.51
B-4	PERGOLA 4	3.26
B-5	LAVAPLANICIA	75.81
SUBTOTAL S.U.		167.36
TOTAL SUP. UTIL. EXTERIORES		167.36
TOTAL SUPERFICIES ÚTILES		416.09



Property Details

Five en suite bedrooms
Two dressing rooms
Swimming pool
Open plan living
Shaded pergola
Al fresco dining
Vistas of central Ibiza
Full width glazing

5 bedrooms & 5 bathrooms
Build Size: 350 sq m
Plot Size: 28,000 sq m



Location

Casa Bloom is located just outside of Santa Gertrudis, which is home to a cluster of bars, restaurants and shops as well as a rich agricultural landscape. Santa Gertrudis features a stunning village square surrounded by independent cafes such as Musset Cafe and Es Canto with many craft shops and galleries showcasing bohemian-inspired work. Ibiza Town and the historical streets of Dalt Vila is also a 14-minute drive away. Ibiza airport is a 17-minute journey by car.

Ibiza Airport (17 mins)

Ibiza Town (14 mins)

Santa Gertrudis (7 mins)

Santa Eulalia (8 mins)

Specialising in Ibiza and
London's design-led homes

Let's talk
+34 871 515 302
ibiza@domusnova.com
domusnova.com/ibiza

The property particulars are a guide not statements. Descriptions, photographs, and plans are for guidance and should be checked a prospective purchaser or tenant. The Property is offered "subject to contract". No warranties, representations, or Tenancy is given by Domus Nova. Expenses incurred by a prospective tenant or buyer will not be reimbursed if the Landlord or the Seller withdraws prior to the Tenancy Agreement being signed, dated and exchanged and cleared funds received. Further details of the Disclaimer together with trading names and our Privacy Policy is shown on our website The IVA position relating to the property may change without notice.

View our privacy policy on how your data is processed and used. To find out how we process Personal Data, please refer to our Privacy Statement and other notices at [Privacy Statement](#).