

DOMUS NOVA



Can Tarida, South West Ibiza

€3,950,000



Set on Ibiza's western coastline, tranquility abounds at Can Tarida with its stylish contemporary interiors, walkable distance to the beach and outstanding sunset views.

Surrounded by greenery and with sunset sea views, it's easy to settle into a Mediterranean mindset at Can Tarida – a three-bedroom home with potential to add a fourth. Connectivity to the outdoors was the organising principle behind its recent construction: vast panels of glazing that open out to the grounds; an interior scheme crafted with natural materials; and an enviable walking distance to the white sands of Cala Tarida.

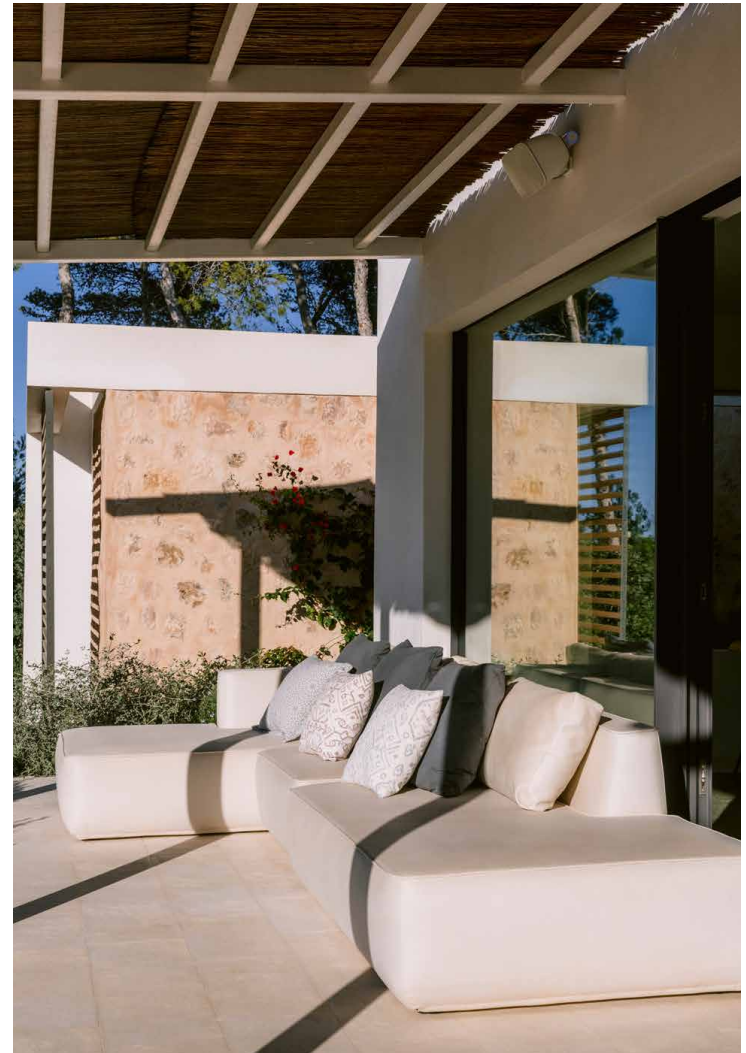
Can Tarida's whitewashed exterior is bold against the rustic bordering trees, with a bi-folding wooden door that reveals an open-plan living area. The contemporary kitchen is centred by a marble-topped island and squared display shelving echoes the villa's cubic architecture. There's a cosy feel, courtesy of a fireplace and exposed brick wall, while large picture windows flood the space with natural light. Slide back the glazing to reveal the outdoor lounge and dining area, with a set of steps that leads down to the 60m² azure pool. Once you've spent the day at the beach, return home to admire the western sunset views.















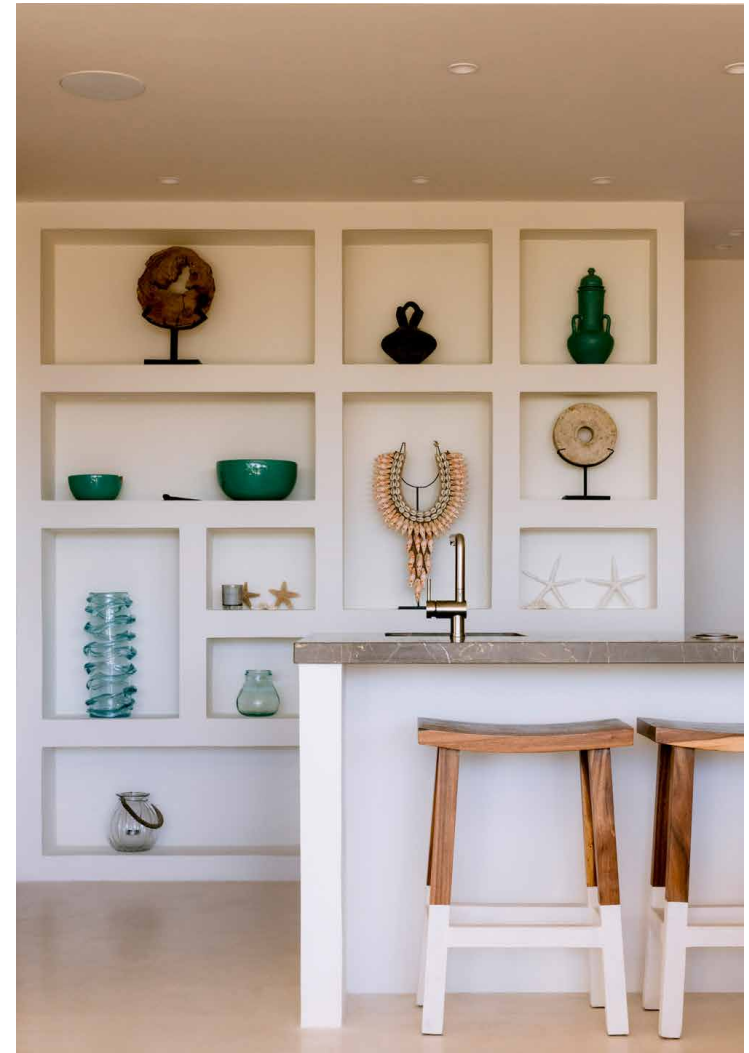
“ Connectivity to the outdoors was the organising principle behind its recent construction



















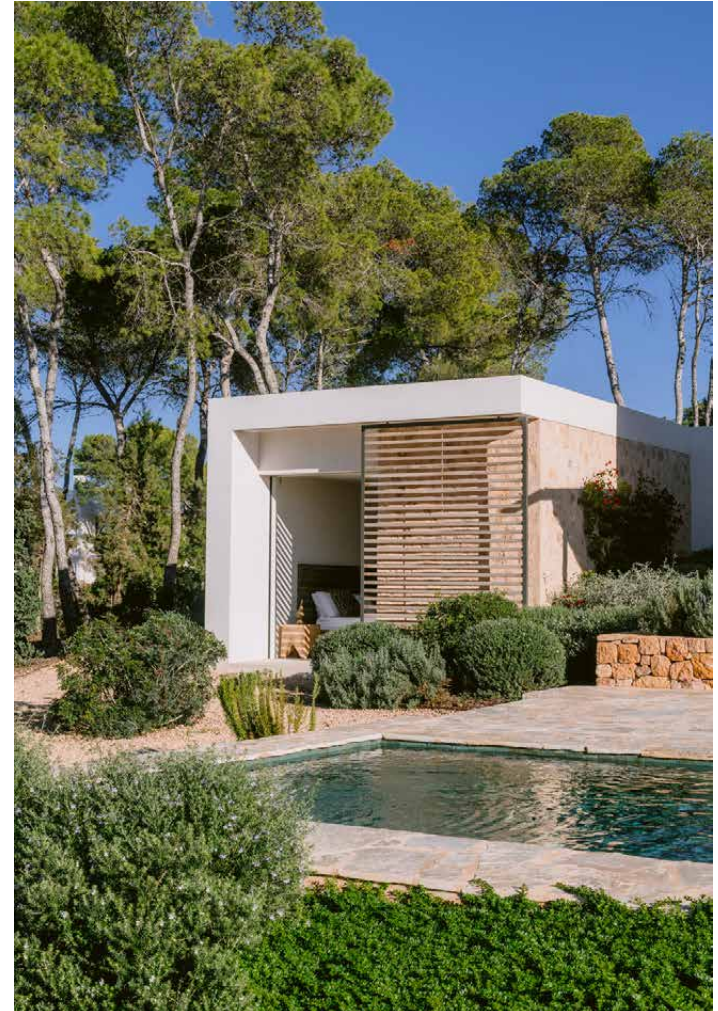
The three bedroom suites maintain the home's calming atmosphere, with pale walls, stone floors and soft curtains that frame large windows. From the principal bedroom, there's a dedicated dressing room with rows of fitted rattan wardrobes, plus an en suite containing a contemporary freestanding tub and dual vanity. In all three en suite bathrooms, olive-green tiling backdrops the meditative rainfall showers.



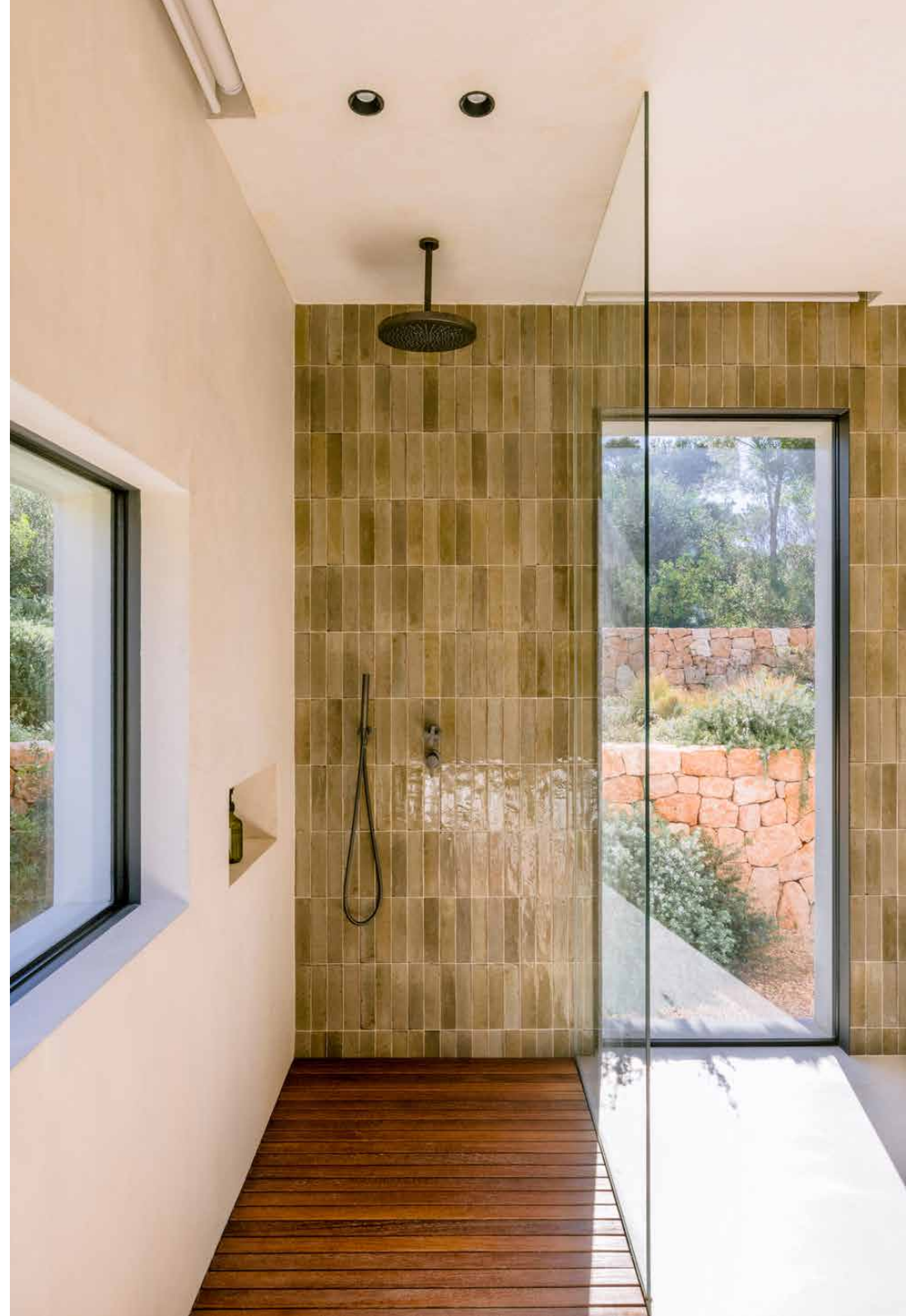






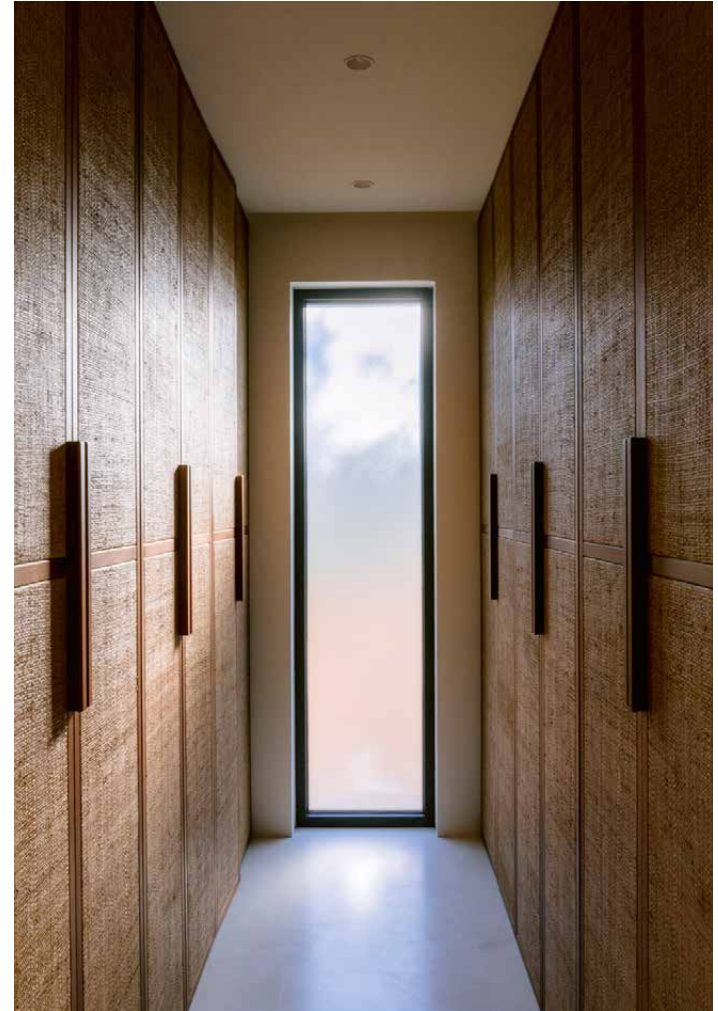
























Property Details

Sea and sunset views

60 sq m swimming pool

Walking distance to the beach

Outdoor lounge areas

Three en suite bedrooms with capability of a further bedroom

Open-plan kitchen, dining and living room

Up to 4 Bedrooms, 3 Bathrooms

Build size: 255 sq m

Plot size: 12,000 sq m



Location

Perched on the picture-perfect western coastline, Can Tarida has an enviable proximity to Ibiza's best sunset beaches. It's a few minutes down to Cala Tarida – a kilometre-long stretch formed of three white coves, home to the infamous Cotton Beach Club. Cala Moli boasts clear waters that are ideal for snorkelers, while Cala Comte gazes out to the little islands of Es Bosc, Sa Conillera, Ses Bledes and S'Espartar. Head to the village of San José, where island creatives showcase their produce and handmade goods at the weekly artisanal market, followed by a meal at family-run Sa Soca. For nature enthusiasts, drive down to the ecologically diverse UNESCO World Heritage Site of Ses Salines.

Cala Tarida – 2 mins

Cala Comte – 5 minutes

Cala Jondal – 15 mins

Ibiza Airport – 18 mins

Ibiza Town – 25 mins

Specialising in Ibiza and
London's design-led homes

Let's talk
+34 871 515 302
ibiza@domusnova.com
domusnova.com/ibiza

The property particulars are a guide not statements. Descriptions, photographs, and plans are for guidance and should be checked a prospective purchaser or tenant. The Property is offered "subject to contract". No warranties, representations, or Tenancy is given by Domus Nova. Expenses incurred by a prospective tenant or buyer will not be reimbursed if the Landlord or the Seller withdraws prior to the Tenancy Agreement being signed, dated and exchanged and cleared funds received. Further details of the Disclaimer together with trading names and our Privacy Policy is shown on our website The IVA position relating to the property may change without notice.

View our privacy policy on how your data is processed and used. To find out how we process Personal Data, please refer to our Privacy Statement and other notices at [Privacy Statement](#).