

DOMUS NOVA

Colville Terrace

Notting Hill W11

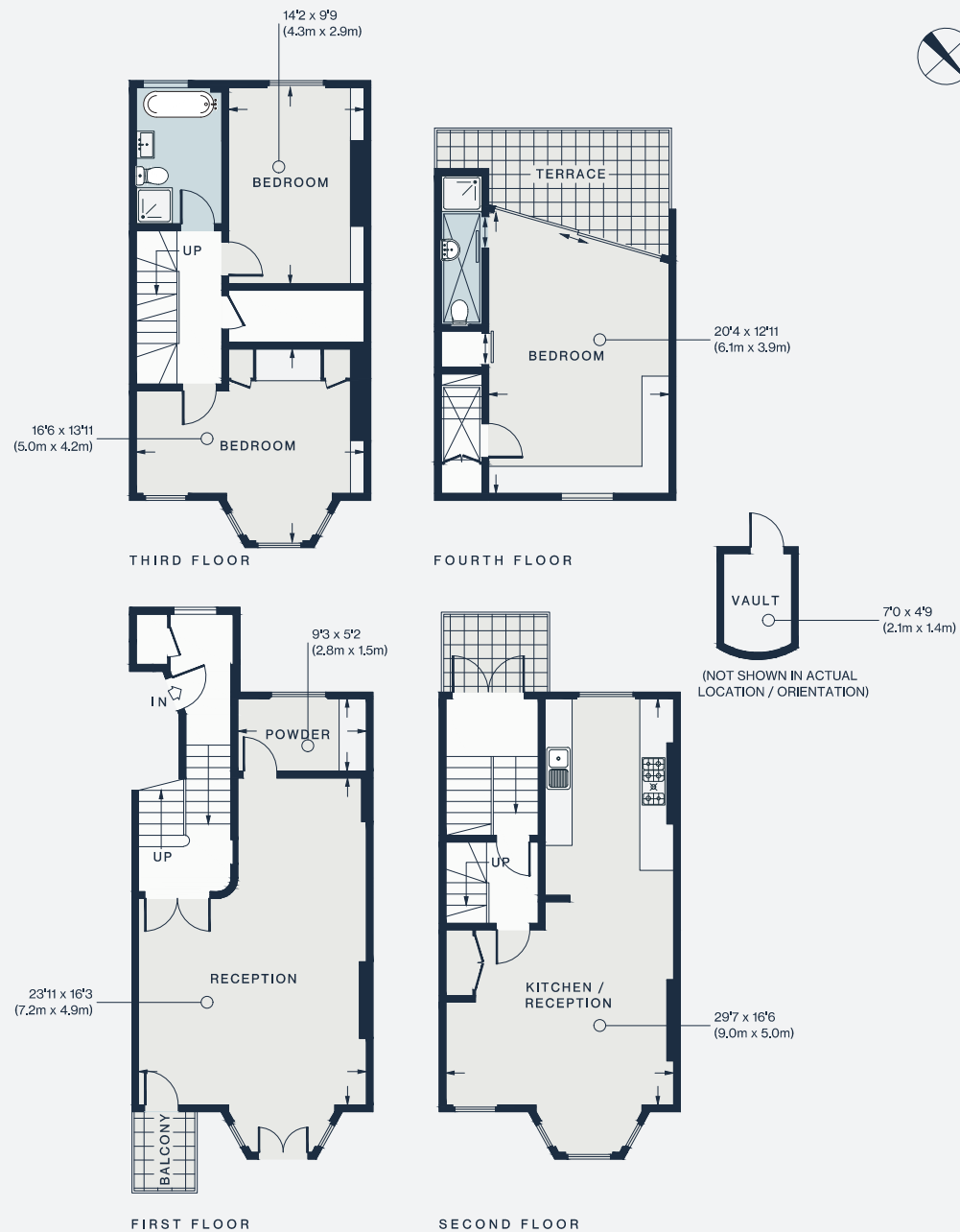
APPROXIMATE GROSS INTERNAL AREA

1873 sq ft / 173.9 sq m

020 7221 7817

domusnova.com

LONDON | IBIZA



Floor plans are for illustrative purposes only and not to scale. Compliant with RICS code of measuring practice.