

DOMUS NOVA



Colville Terrace W11
£1,700 p/w - Short Let



From the light-flooded open-plan living space to the tranquil bedrooms and suntrap garden, this two-bedroom apartment has space and style in abundance.

A contemporary take on its period framework, Colville Terrace's heritage details work in effortless tandem with modern accents. In the ground-floor reception room, high ceilings and decorative cornicing are a refined backdrop for sculptural light fittings, bohemian furnishings and eye-catching framed prints. Morning light beams through a bay window, creating a simultaneously uplifting and soothing atmosphere.

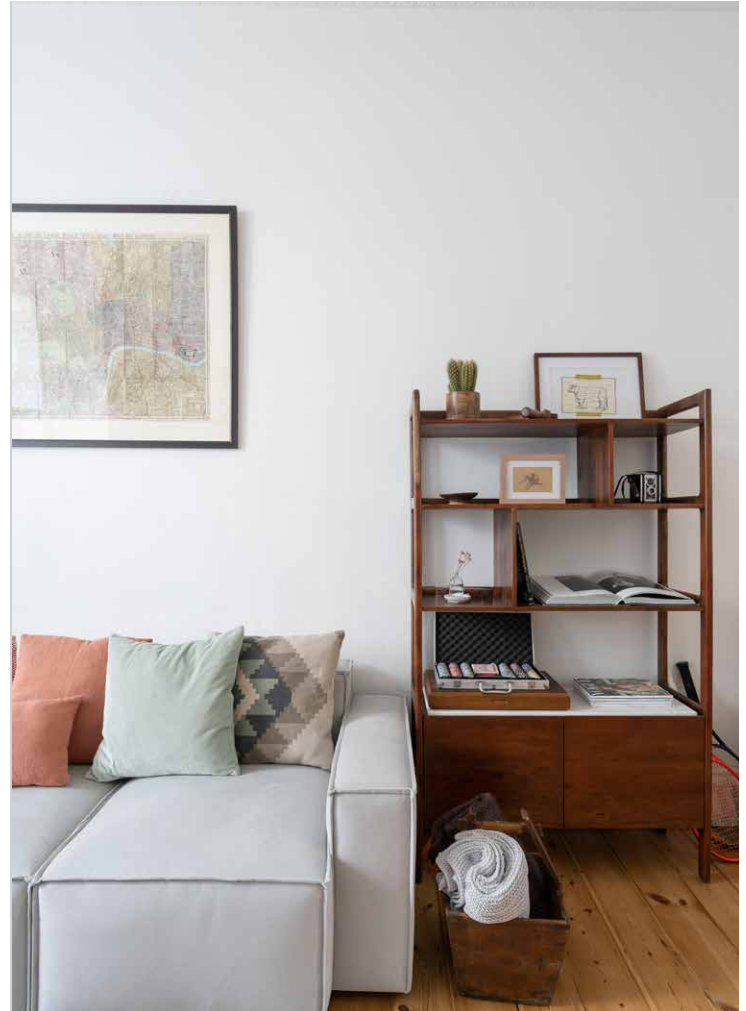
A stretch of blonde wood floors affords seamless flow into the kitchen. There's an understated urban edge to the metro-tile splashback, drop lightbulbs and suspended utensils. Expansive French windows open out to a balcony, imagined for morning coffees or evening sundowners. Take the cast-iron steps down to the immaculately-paved garden, where shooting bamboo is a verdant setting for barbecues.

Subterranean in plot, sunlit and serene in feel: the lower-ground bedrooms have pared-back palettes and spacious footprints. The master vaunts floor-to-ceiling mirrored storage, soft carpets and a marble feature fireplace. Its ensuite bathroom is a stylish affair with sleek tiles and a large waterfall shower. The guest bedroom, which can be used as a quiet study space, enjoys direct access to the garden. A family-sized bathroom is a showpiece of monochromatic finishes, with a striking Crittall-style shower frame.





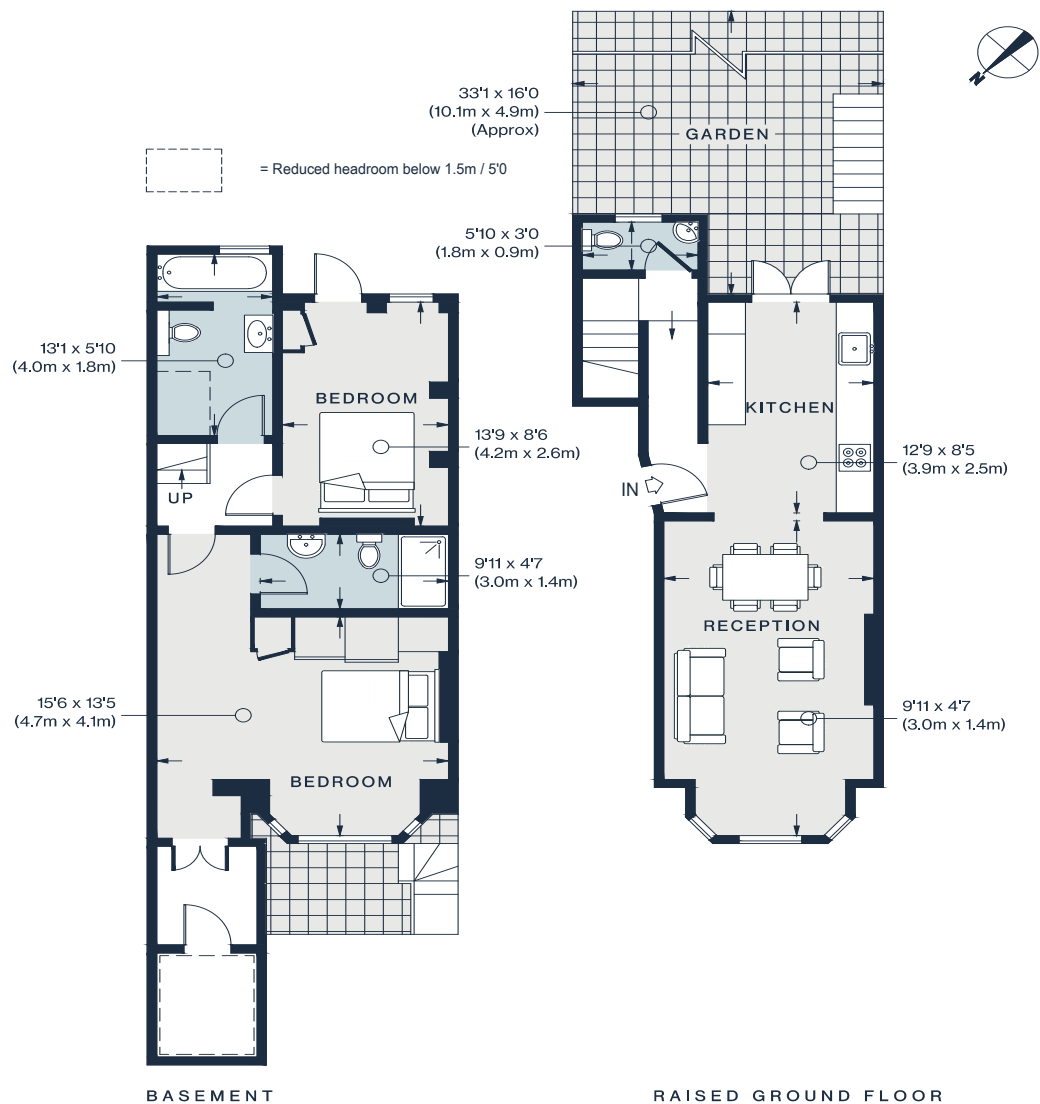










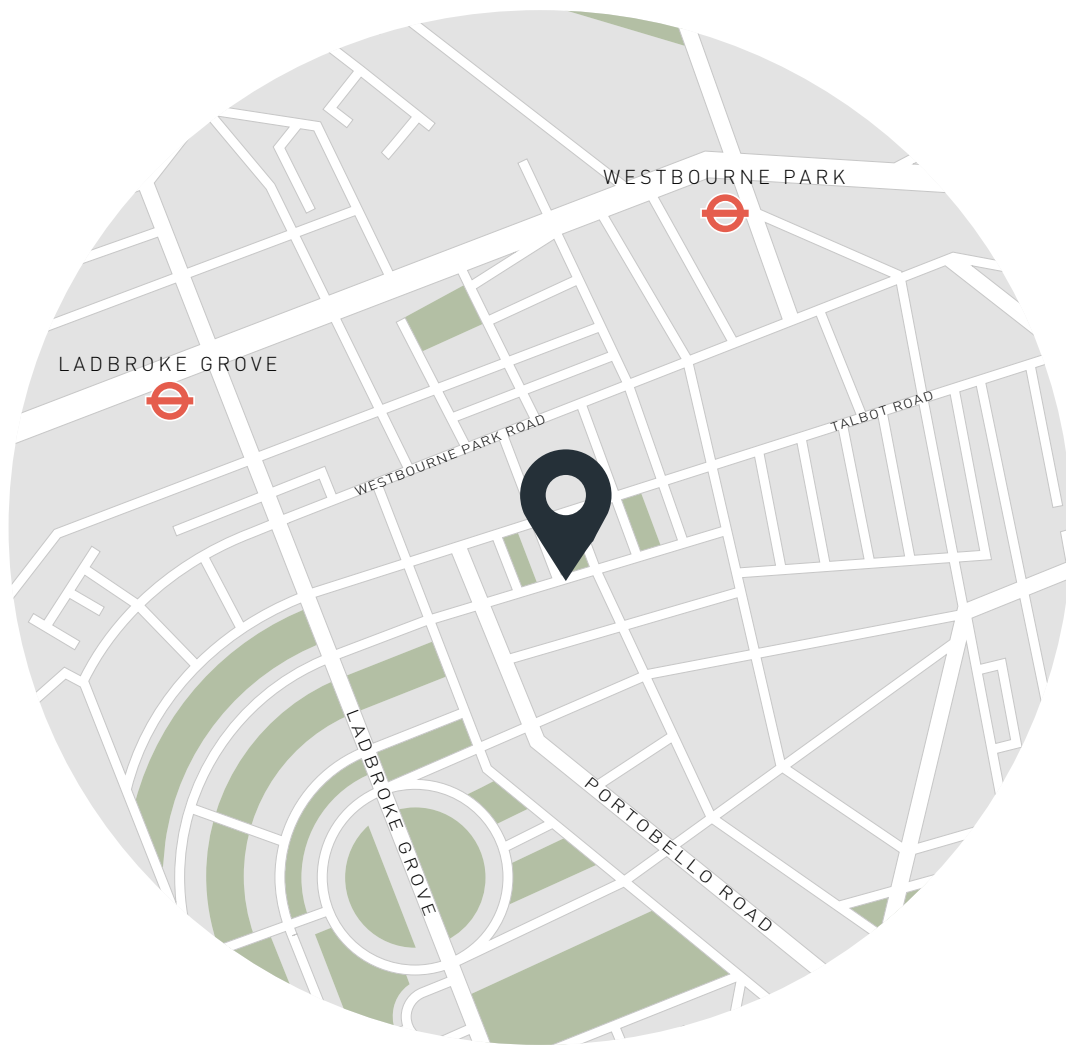


Property Details

Open-plan kitchen and reception room
Principal bedroom suite
Guest bedroom
Family bathroom
Private garden with barbecue
Royal Borough of Kensington & Chelsea

Approx. 986 sq ft / 91.6 sq m
EPC = E
Council Tax Band - F
Deposit payable - £8,000

Floor plans are for illustrative purposes only and not to scale. Compliant with RICS code of measuring practice.
Furniture layouts are indicative only. This property may be furnished, part-furnished or unfurnished. Please refer to your agent for details.



Location

Just moments from Portobello Road, Colville Terrace is a quintessential Notting Hill street – lined with period townhouses in paint-box hues. The infamous Electric Cinema is on your doorstep or find a new page-turner at Lutyens & Rubinstein. Spend a morning sifting through vintage stalls before a walk around Holland Park. Morning brunch is best at Farm Girl or Sunday in Brooklyn; a tippie at The Ginstitute to complete an evening.

Nearest tube:

Ladbroke Grove – 8 mins (Circle, Hammersmith & City)

Notting Hill Gate – 10 mins (Central, Circle, District)

Specialising in London
and Ibiza's design-led homes

Let's talk
020 7727 1717
lettings@domusnova.com
domusnova.com

The property particulars are a guide not statements. Descriptions, photographs, and plans are for guidance and should be checked by the prospective tenant. The Property is offered "subject to contract and references". No warranties, representations, or Tenancy is given by Domus Nova. Expenses incurred by a prospective tenant will not be reimbursed if the Landlord withdraws prior to the Tenancy Agreement being signed, dated and exchanged and cleared funds received. Furniture and other items shown in a property at viewing may belong to a current tenant. The prospective tenant should verify in writing which fixtures and fittings forms part of the Tenancy. Our full lettings disclaimer together with trading names and our [Privacy Policy](#) is shown on our website