

DOMUS NOVA

Chepstow Road

Notting Hill W2

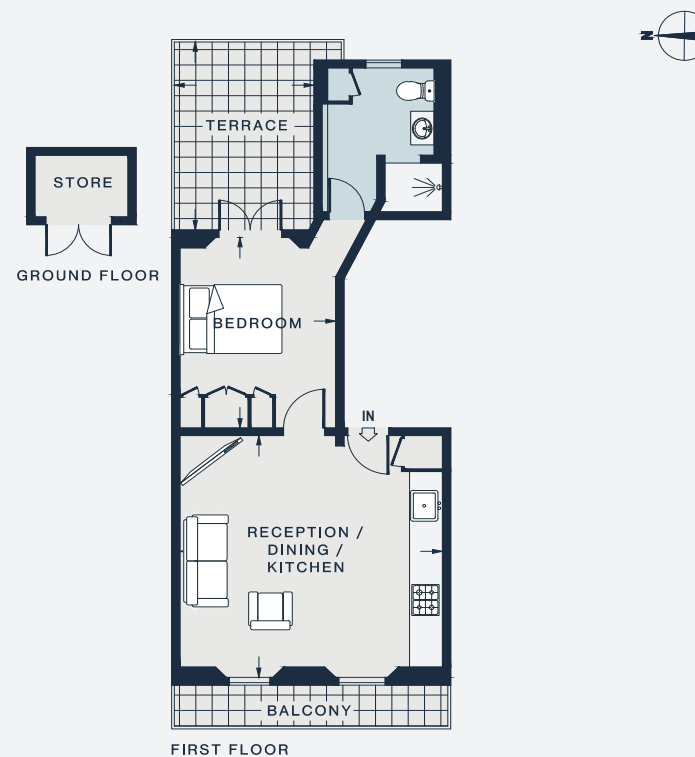
APPROXIMATE GROSS INTERNAL AREA

429 sq ft / 39.87 sq m

020 7727 1717

domusnova.com

LONDON | IBIZA



RECEPTION / DINING / KITCHEN

15'8 x 15'6 (4.7m x 4.7m)

BEDROOM

12'1 x 9'5 (3.6m x 2.8m)

TERRACE

12'0 x 8'3 (3.6m x 2.5m)

Floor plans are for illustrative purposes only and not to scale. Compliant with RICS code of measuring practice. Furniture layouts are indicative only. This property may be furnished, part-furnished or unfurnished. Please refer to your agent for details.