

DOMUS NOVA



Chepstow Crescent W11
£3,000 p/w Short Let



Redrawn with the imaginative eye of Michaelis Boyd, this second-floor apartment sets an inspiring stage for city living.

Embracing a loft-style aesthetic, architectural innovations energise a hushed palette of hues in the open-plan kitchen and reception room. A convivial space to unwind or entertain, swathes of sunlight filter down from a butterfly vaulted ceiling. Playful patterns and textures infuse personality, from painted brick detailing to considerably sourced wooden floors, carefully reclaimed from a mill in France. Just sink back into the sofa, switch on the fire and relax.

Inky cabinetry crafts a considered space to cook, with smooth stone worktops lit by spotlights overhead. Suspended pendant lamps bring an air of intimacy to dining, with a Rose Uniacke table that seats eight. Post-dinner, settle into one of the antique 70's Italian armchairs









“ Embracing a loft-style aesthetic, architectural innovations energise a hushed palette of hues in the open-plan kitchen and reception room.

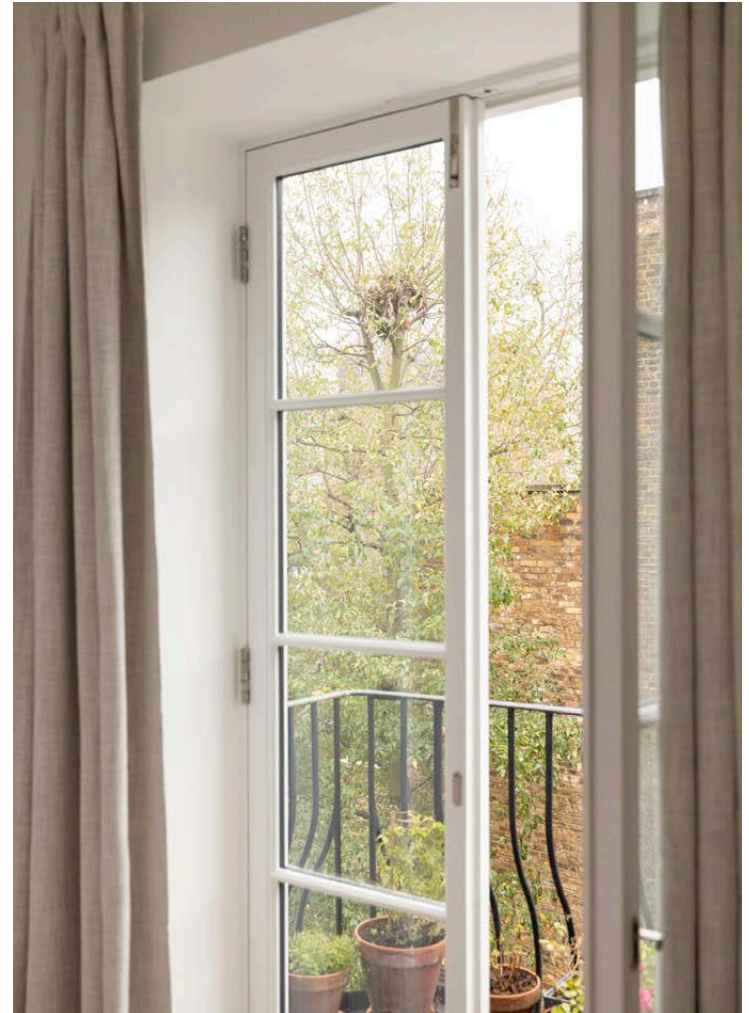


Come evening, two bedrooms are calming sanctums to rest or relax. In the first bedroom, a considered synergy between light, texture and tone unfolds. Alcoves are primed for artwork or oddities, while custom cabinetry frames the bed to enhance the sense of space. In warmer months, draw back the curtains to an intimate balcony – an idyllic spot for morning coffees. Considered styling and acquired antiques adorn the second bedroom, where soft furnishings echo a lively wall of artwork. Enhanced with natural light from two tall sash windows and a skylight above, this soothing setting invites relaxation.

Serving both bedrooms, a sophisticated bathroom is enveloped in deep navy hues. Crafted with hand-made tiles, a walk-in rainfall shower completes the sleek space.

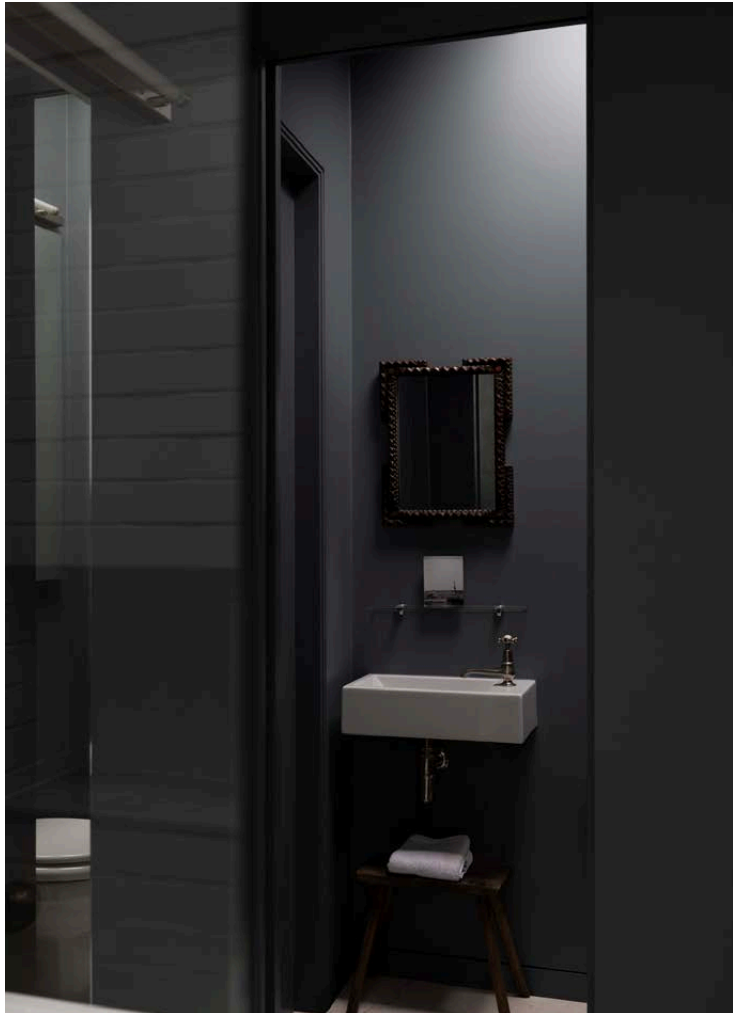


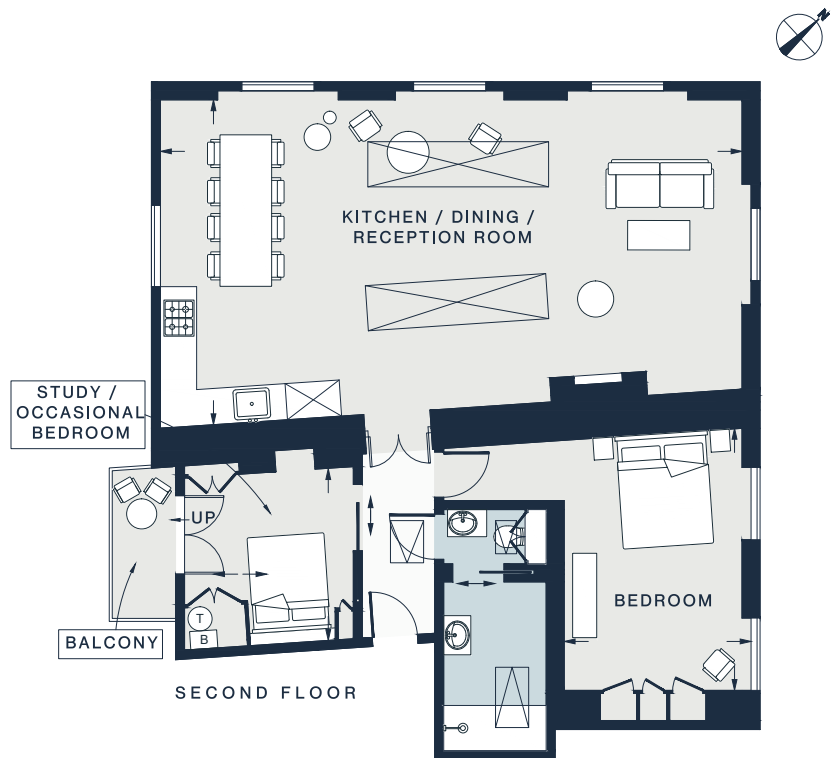












KITCHEN / DINING / RECEPTION ROOM	STUDY / OCCASIONAL BEDROOM	BEDROOM
31'8 x 17'11 (9.6m x 5.4m)	9'5 x 9'3 (2.8m x 2.8m)	14'3 x 10'2 (4.3m x 3.1m)

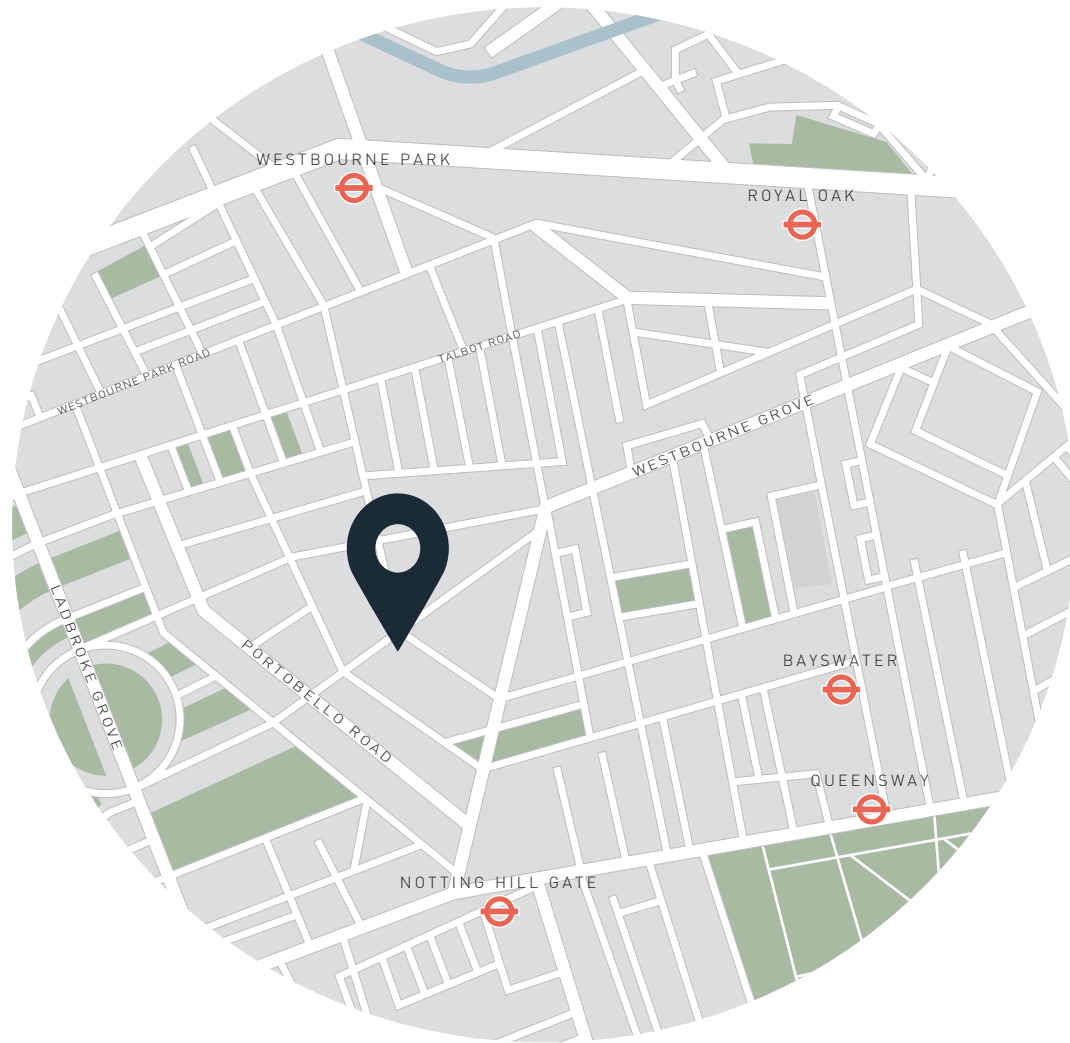
Approx. Gross Internal Area = 1016 sq ft / 94.4 sq m

Floor plans are for illustrative purposes only and not to scale. Compliant with RICS code of measuring practice. Furniture layouts are indicative only. This property may be furnished, part-furnished or unfurnished. Please refer to your agent for details.

Property Details

Architecture by Michaelis Boyd
 Open-plan kitchen, dining and reception room
 Principal bedroom
 Guest bedroom
 Shower room
 Balcony
 Royal Borough of Kensington and Chelsea

Approx 1,016 sq ft / 94.4 sq m
 EPC = D
 Council Tax Band = G
 Deposit = £12,000



Location

Sitting just moments from Portobello Road, Chepstow Crescent places the neighbourhood's hotspots on your doorstep. Favourite refreshment haunts Granger & Co. and Ottolenghi are interspersed with coveted boutiques including Reformation and Sézane. Daylesford Organic Farm Shop and Planet Organic are conveniently located for grocery essentials. Kickstart the day with a workout at Bodyism, an early-morning swim at the Serpentine Lido or a run in Hyde Park. Come evening, head up Portobello Road for dinner at Gold, or three-Michelin-starred Core by Clare Smyth.

Notting Hill Gate (7 mins)

Specialising in London
and Ibiza's design-led homes

Let's talk

020 7727 1717

lettings@domusnova.com

domusnova.com

The property particulars are a guide not statements. Descriptions, photographs, and plans are for guidance and should be checked by the prospective tenant. The Property is offered "subject to contract and references". No warranties, representations, or Tenancy is given by Domus Nova. Expenses incurred by a prospective tenant will not be reimbursed if the Landlord withdraws prior to the Tenancy Agreement being signed, dated and exchanged and cleared funds received. Furniture and other items shown in a property at viewing may belong to a current tenant. The prospective tenant should verify in writing which fixtures and fittings forms part of the Tenancy. Our full lettings disclaimer together with trading names and our [Privacy Policy](#) is shown on our website

© Domus Nova 2024. All rights reserved.