

DOMUS NOVA



Can Mikkie, South West Ibiza
For 10 guests



A sculptural five-bedroom villa for sale on Ibiza's southwest coast. Sea and sunset views from a private retreat that seamlessly merges architecture with nature.

Set on a sprawling 1.5-hectare plot, this dramatic island home was conceived by visionary architect Jaime Romano. Harmoniously blending modernism with hints of brutalism, its captivating design showcases shapes that artfully play with light and shadow, embracing the passage of the day.

A dramatic entrance leads directly into the open-plan kitchen and reception room. At either end of the space, floor-to-ceiling glazing slides away to channel through light and air. Carefully delineated into different zones, this sophisticated space sets the stage for cooking, dining and entertaining.

Palatial proportions play out in the generous living area. Meticulously crafted by Isabelle Stanislas, the interiors soften the structural lines with earthy tones and sumptuous finishes. Beyond, rolling hills and the glistening coastline make for organic vistas. In the kitchen, a large wooden breakfast bar offers the whole family a front-row seat.

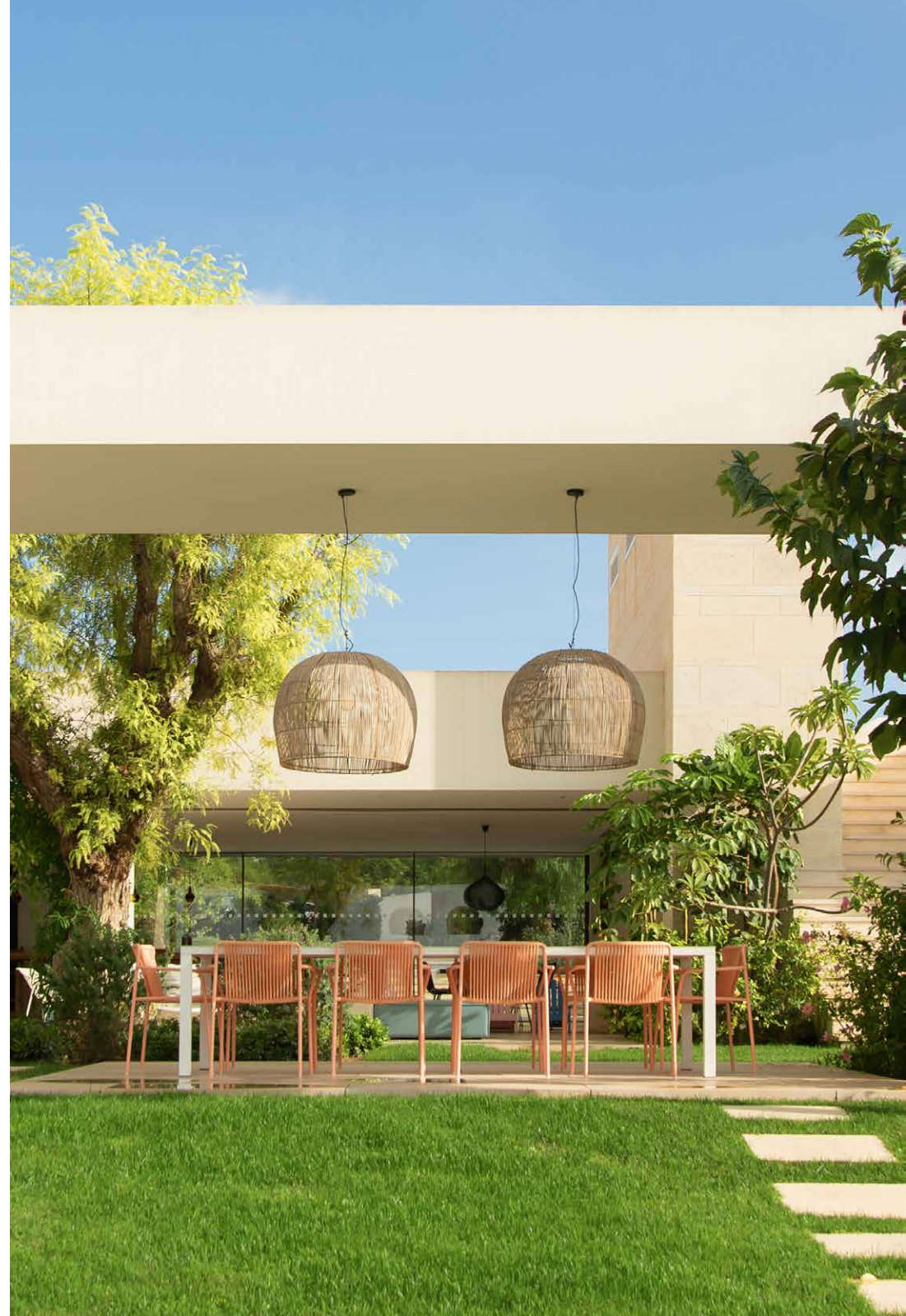


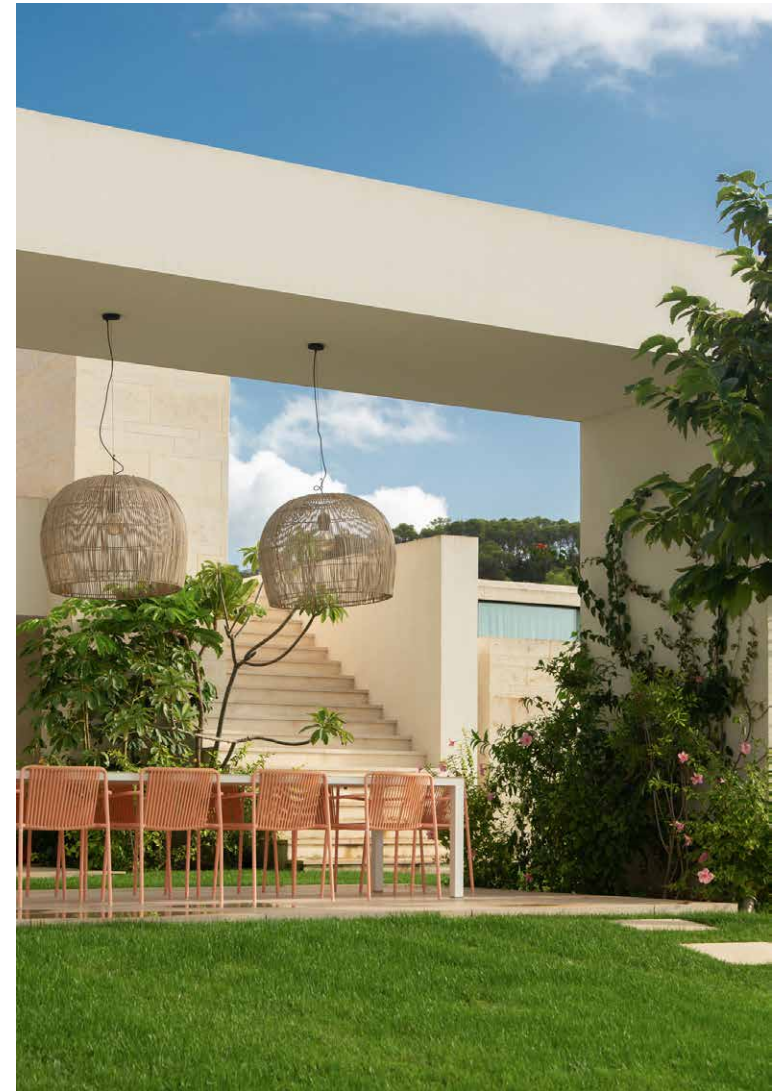






Fusing inside and outside space, the home's structural frame extends over a dining terrace to provide shelter. Governed over by a mature tree, an exterior living area features a manicured lawn which flows into a landscaped garden, sweeping down to a large infinity pool. A roof terrace offers unrivalled views while an additional sheltered terrace on the opposite side of the villa provides dining options depending on the time of day.



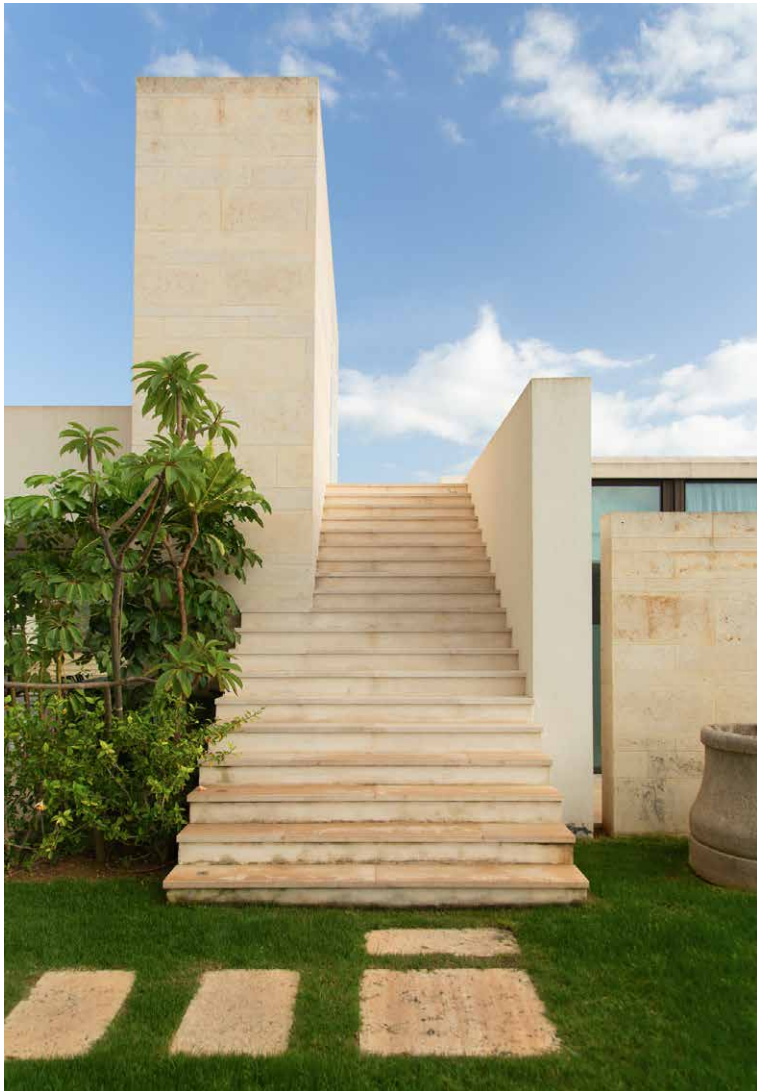








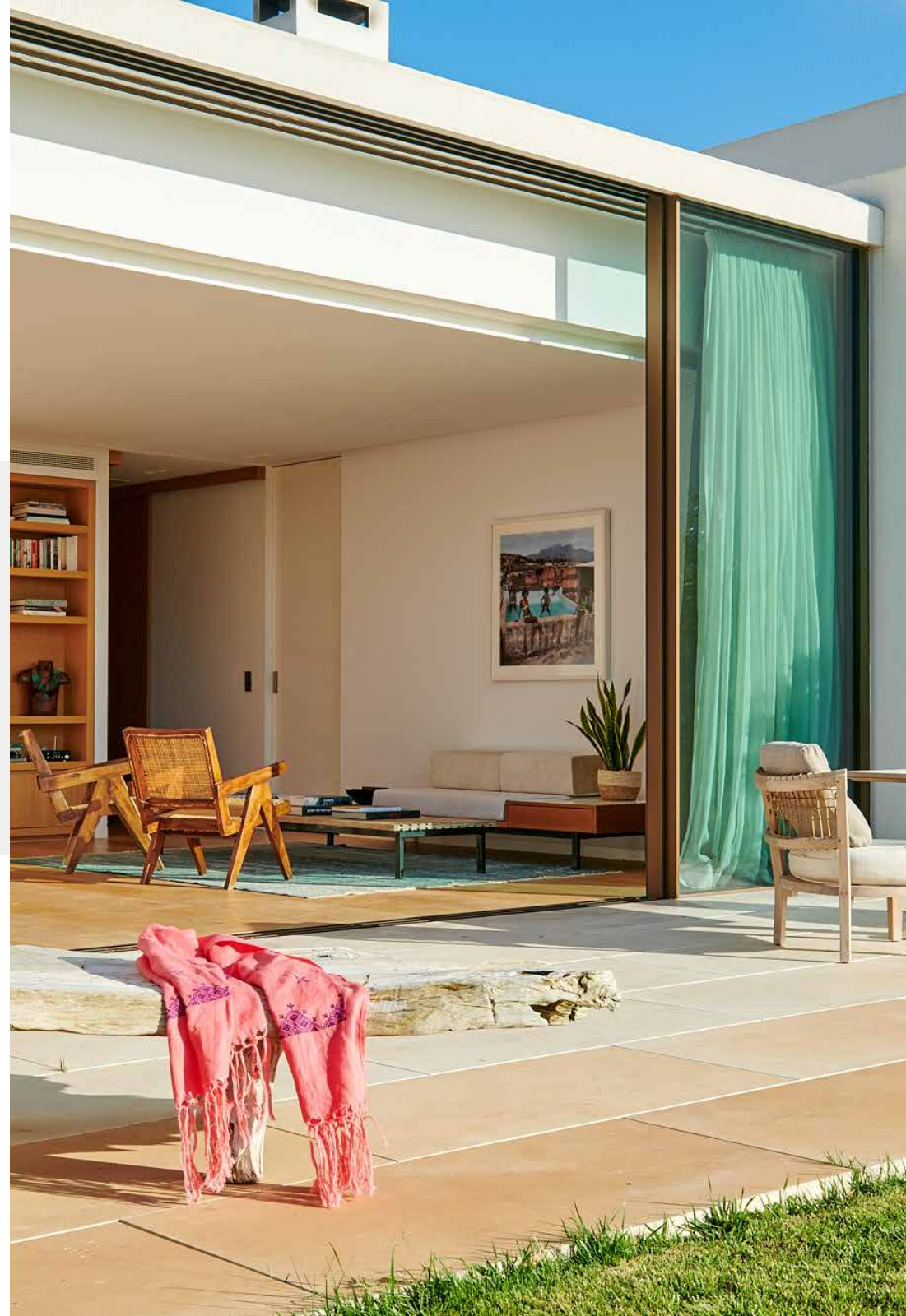








Five bedrooms stretch out laterally. Stone tiles transition to wood flooring upon entering the principal bedroom suite. Optimised for rest, it is a tranquil space. Full-height glazing retracts to blend the boundary between the sumptuous sleeping space and a spacious terrace. A modern en suite features a dual vanity and a walk-in rainfall shower. Four further bedrooms feature warm wooden accents, direct terrace access and considered design details. All bathrooms additionally benefit from an outdoor shower, backdropped by undulating hills and the boundless horizon.



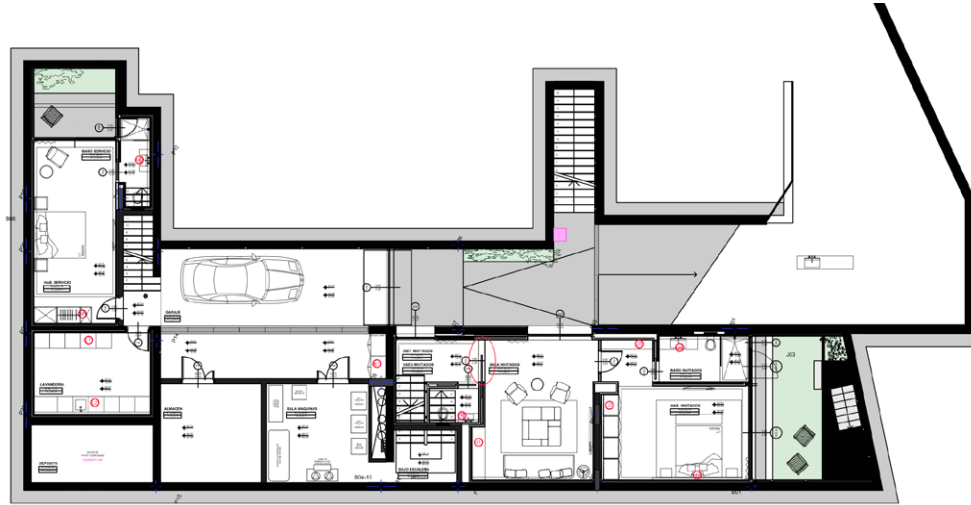










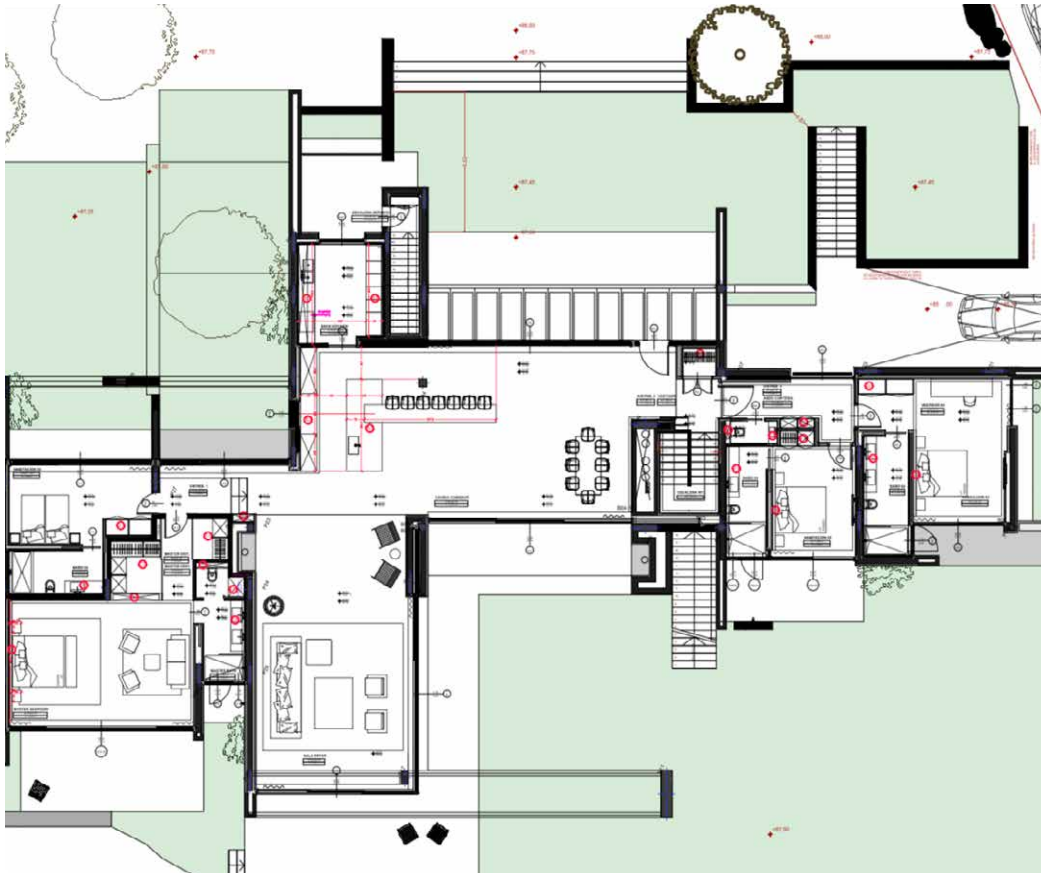


Property Details

Sea and sunset views
 Open-plan kitchen and dining room
 Separate living area
 Five bedroom suites with terraces
 Garage
 Several dining terraces
 Roof terrace
 Landscaped gardens
 Large infinity pool

Build size: 450 sq m
 Plot size: 15,000 sq m

Minimum 31-day booking period





Location

Your gateway to Ibiza's southwest coast, Can Mikkie's setting combines rolling hills with close proximity to the ocean. A 10-minute nature walk down a private pathway takes you to the resort of Cala Tarida, with its pristine strip of white sand. Immerse yourself in the crystal-clear waters, indulge in an array of water sports and relish the renowned Cotton Beach Club. Venture north to uncover hidden coves. If you're seeking a challenge, ascend nearby Sa Talaia – Ibiza's highest mountain. Alternatively, embrace a leisurely Saturday in the nearby town of San José, where locals showcase organic produce and handmade crafts at its charming ecological market.

Ibiza Airport (21 mins)

Ibiza Town (24 mins)

San José (13 mins)

Specialising in Ibiza and
London's design-led homes

Let's talk
+34 871 515 302
ibizarentals@domusnova.com
domusnova.com/ibiza

The property particulars are a guide not statements. Descriptions, photographs, and plans are for guidance and should be checked a prospective purchaser or tenant. The Property is offered "subject to contract". No warranties, representations, or Tenancy is given by Domus Nova. Expenses incurred by a prospective tenant or buyer will not be reimbursed if the Landlord or the Seller withdraws prior to the Tenancy Agreement being signed, dated and exchanged and cleared funds received. Further details of the Disclaimer together with trading names and our Privacy Policy is shown on our website The IVA position relating to the property may change without notice.

View our privacy policy on how your data is processed and used. To find out how we process Personal Data, please refer to our Privacy Statement and other notices at [Privacy Statement](#).

© Domus Nova 2023. All rights reserved.