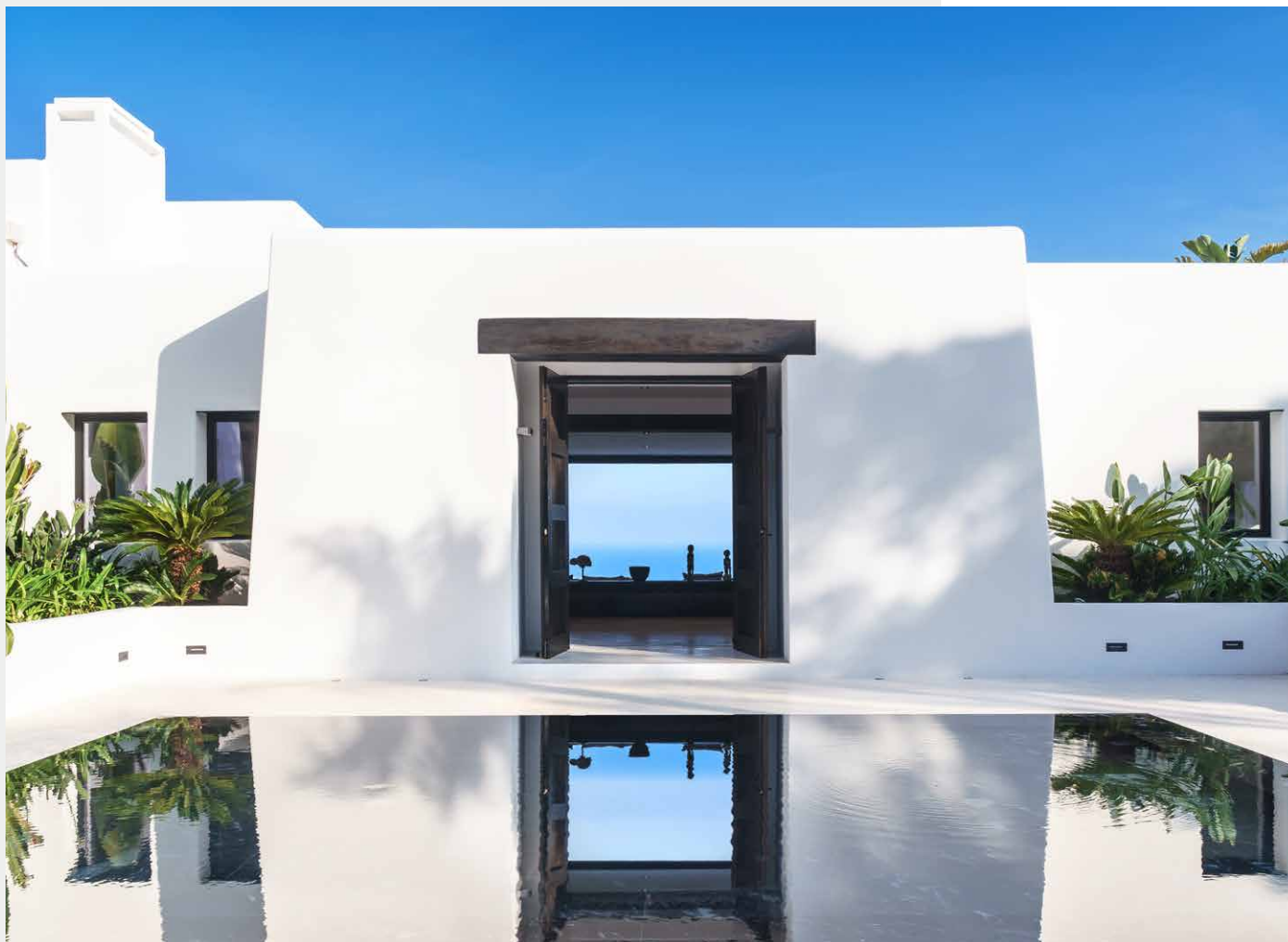


DOMUS NOVA



Can Meno, Cap Martinet
For 12 guests



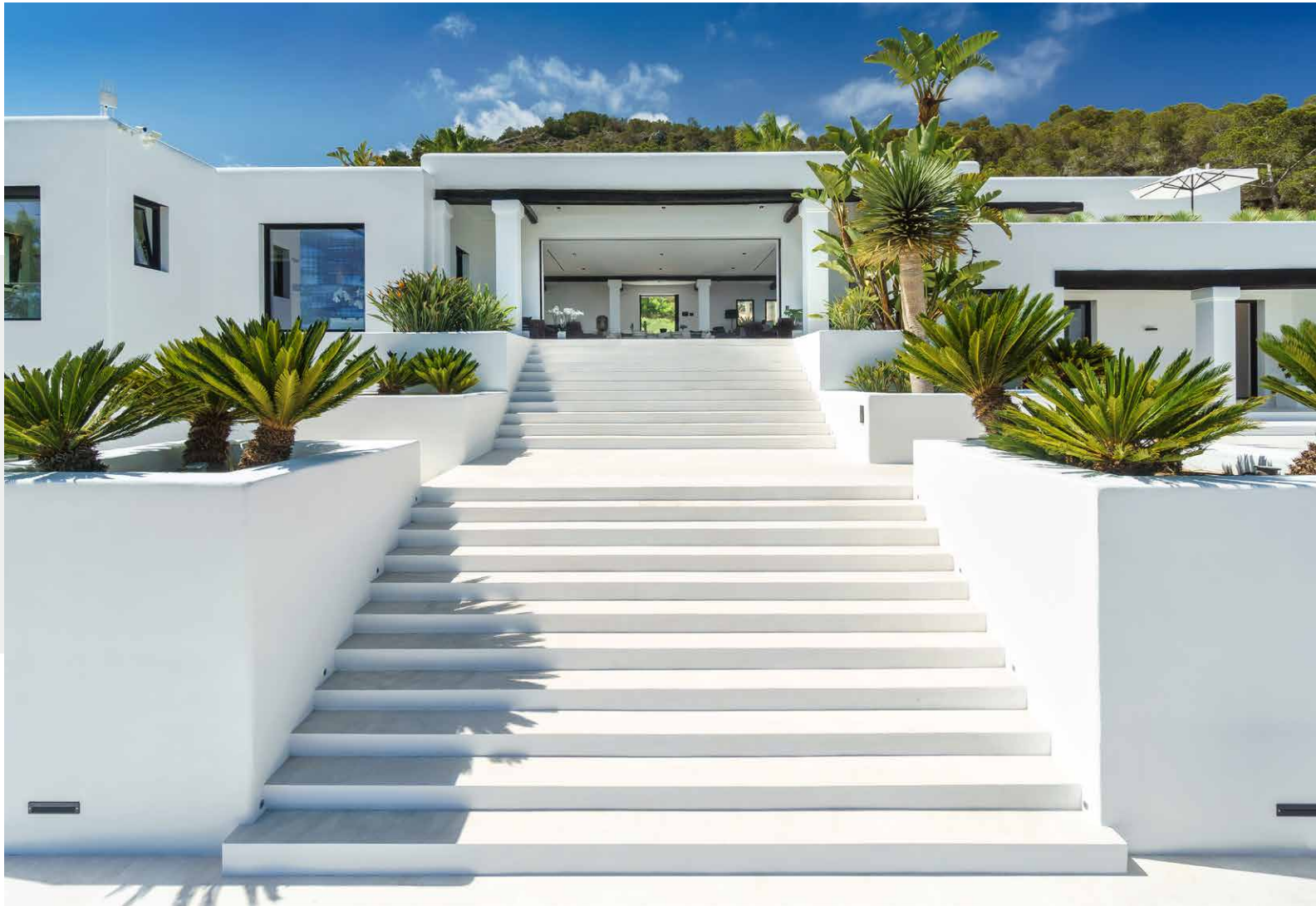
A cool, contemporary villa hewn into the hillside above Cap Martinet. A free-form pool. Sea-view terraces from every room.

This is among the island's most outstanding villas and designed by the world-renowned Ibizan architects Blakstad. Cool, contemporary architecture hewn into the hillside above Ibiza Town. Terraces spilling from six bedrooms. From here, 450m from the sea, it's only the free-form pool and native flora between you and the glistening Mediterranean.

Can Meno is a quiet haven between the exclusive neighbourhood of Cap Martinet and cultural hotspot Jesús. Interiors are as effortless as they are flawless. Cool stone floors, graphic soft furnishings and frameless archways that channel space and light across the formal dining room, streamlined kitchen and lounge.

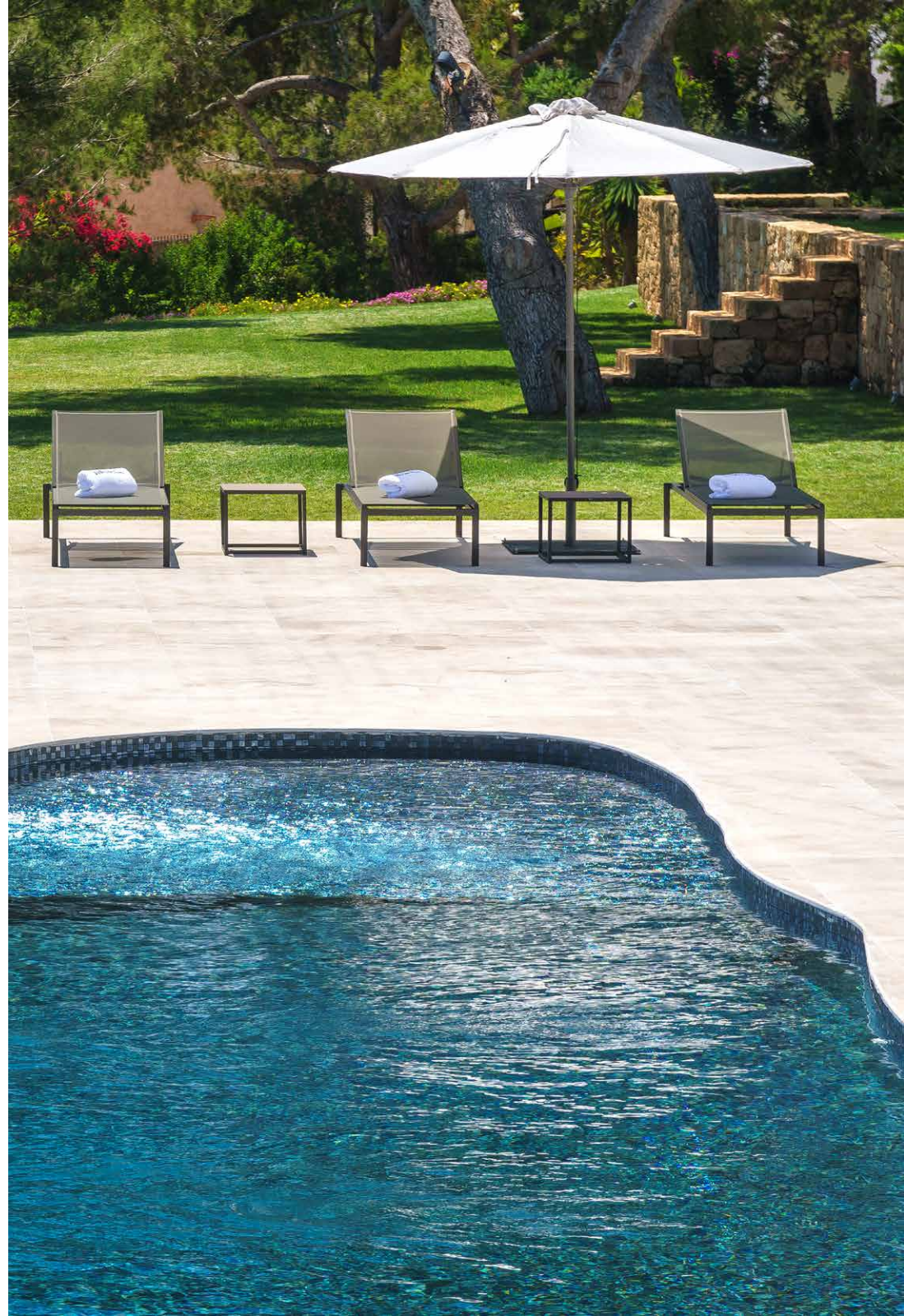






“

Relax on a day bed, breathe in the scent of nearby citrus trees, or dip between the saltwater infinity pool and pergola.





Wide glass doors let horizon views steal the show. Slide them back and let the boundary between inside and out disappear. Al fresco living comes naturally here, thanks to outdoor cooking/ dining areas, sun decks and low-slung chill-out zones perfect for gathering with friends and family. Landscaped gardens frame the unforgettable free-form pool. Think it looks good now? Wait until eco-friendly lights illuminate every angle of the home come dusk. There's no better way to end a day on the island.

Spreading out across the first floor, the master suite levels up luxury living, with a walk-in dressing area and a freestanding tub thoughtfully positioned for gazing to Formentera as you soak. Five further bedrooms – three en suite – are cool and calm, each with sleek, integrated storage and private terraces.





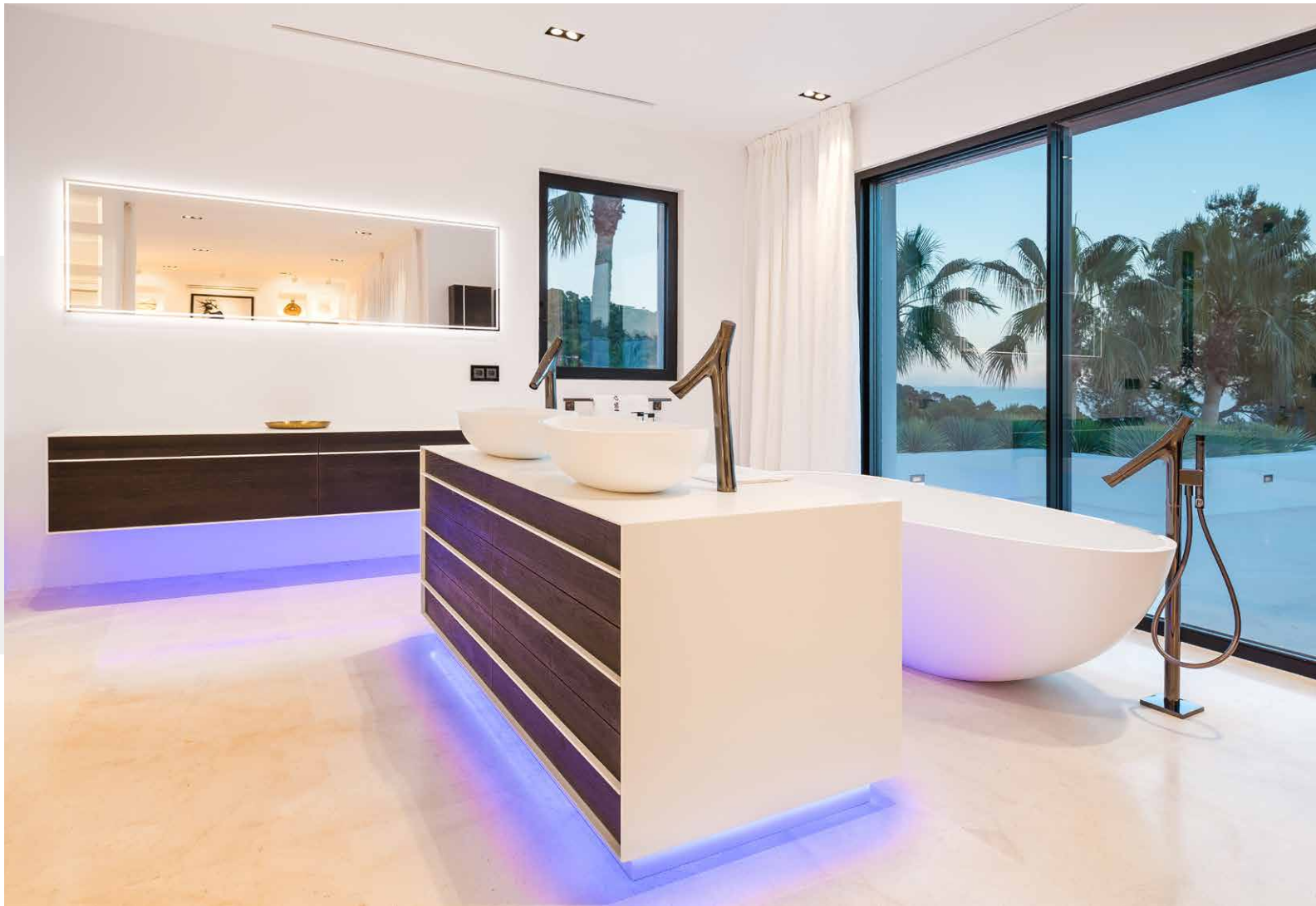




















Property Details

Architect: Blakstad
Bespoke, open-plan living room
Large Bulthaup kitchen
Six bedrooms (four en suite)
Vast outdoor terraces
Free-form swimming pool
Array of dining areas
Landscaped gardens
Eco-friendly lighting

Tourist License: ETV-1461-E



Location

With its quiet, hillside vantage point, few neighbours and uninterrupted sea views, Can Meno enjoys one of Ibiza's most coveted locations. It's your gateway to Ibiza Town when you want it, and a retreat when you need. Days spent between UNESCO-protected Dalt Vila and star-studded Marina Botafoch. Tucking into the high-end restaurants along the sandy crescent of Cala Talamanca, or the local-favourite shops and watering holes of Jesús.

Ibiza Airport (13 mins)

Ibiza Town (9 mins)

Jesús (4 mins)

Specialising in London
and Ibiza's design-led homes.

Let's talk

+34 871 515 302

hello@domusnovaibiza.com

domusnovaibiza.com