

DOMUS NOVA

Cambridge Gardens

North Kensington W10

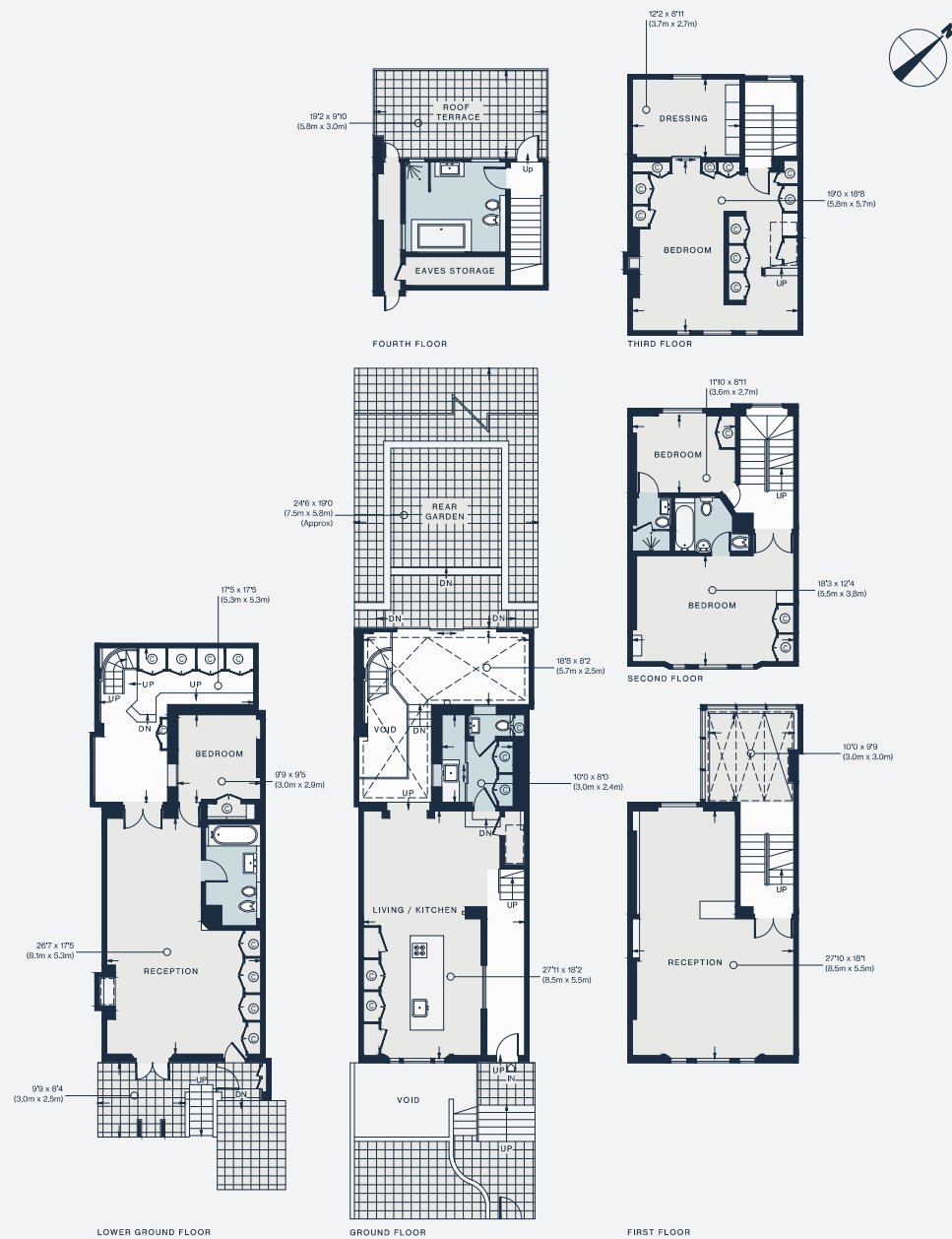
APPROXIMATE GROSS INTERNAL AREA

3,551 sq ft / 330 sq m

020 7221 7817

domusnova.com

LONDON | IBIZA



Floor plans are for illustrative purposes only and not to scale. Compliant with RICS code of measuring practice.