

# DOMUS NOVA



Blenheim Crescent W11  
£4,000 p/w Short Let



Contemporary design and art-filled interiors. This three-bedroom duplex apartment for rent offers a striking juxtaposition to its traditional exterior

Deceptively traditional with its red-brick and stucco front, Blenheim Crescent is a master class in contrasts. Originally designed by renowned interior specialist Stephen Ryan, recent renovations dress the two floors of this heritage home with modern design.

There's an elevated feel to the entranceway – a glimpse into the home's strikingly contemporary interior. A unification of old and new, micro-cement flooring and an ethereal grey light fitting effortlessly combine with a soaring ceiling and intricate cornicing.



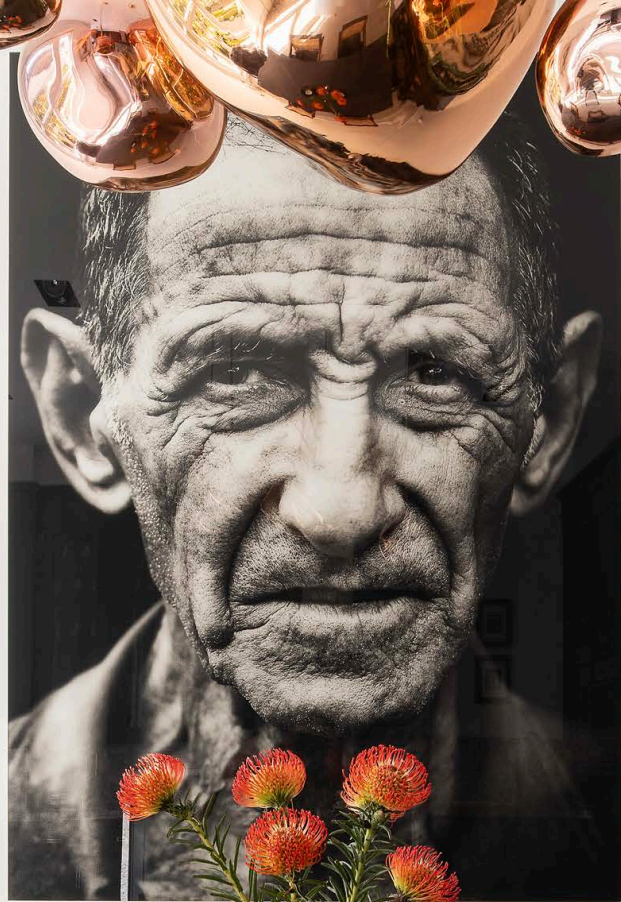




“ A unification of old and new, micro-cement flooring and an ethereal grey light fitting effortlessly combine with a soaring ceiling and intricate cornicing.





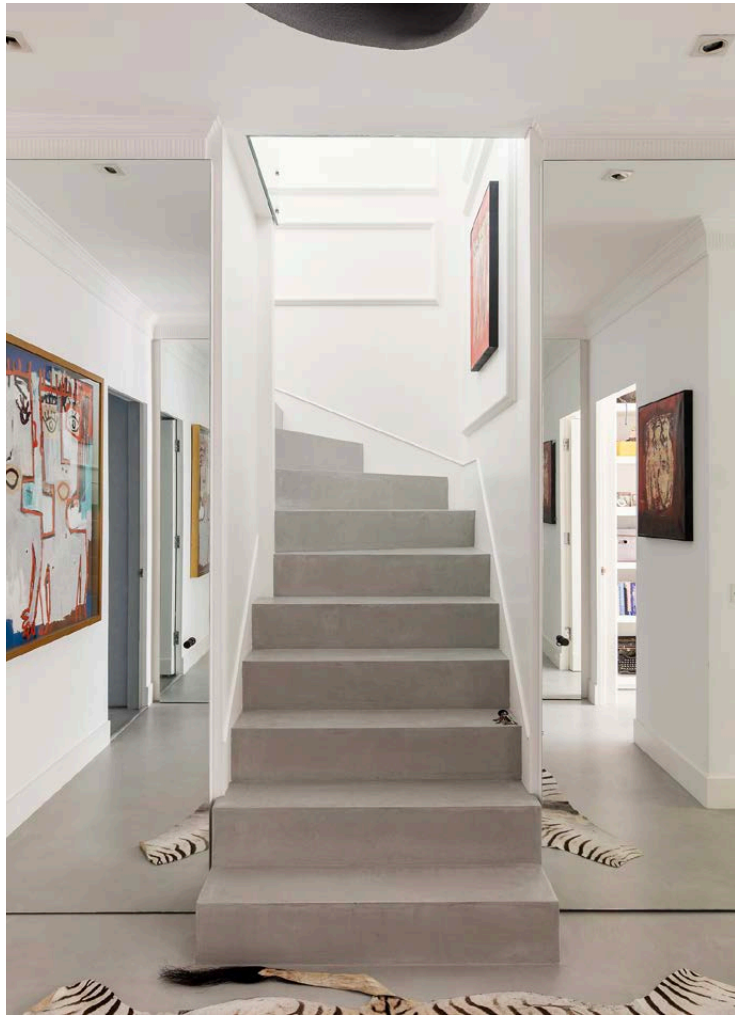




A green glass block offers an unconventional step down to the reception room – a space anchored by a wealth of abstract art. An uplifting ambiance pervades, courtesy of a floor-to-ceiling bay window. Conversation starting pieces capture attention, positioned above a Pierro Lissoni sofa to one side, and a gas marble fireplace to the other. Set the scene with the Sonos sound system and LEAX lighting, then kick back in one of the Rietveld armchairs.

Used to striking effect, art subtly delineates the open-plan kitchen and dining room that sits opposite. Deep toned cabinetry crafts the framework for a sophisticated kitchen by Mark Wilkinson, with lustrous veined marble and integrated Miele appliances. A dark wooden dining table ties the space together, surrounded by Pierre Jeanneret chairs and lit by a rose gold light overhead. Double doors open to a serene private garden, considerably separated for lounging and alfresco dining.







Arranged over the lower floor, three bedrooms embrace a minimalist aesthetic. A departure from the home's continued white walls, grey Limewash encompasses the principal bedroom suite. A considered space for storage, integrated wardrobes seamlessly meld into the space. Light filters through glass doors to the rear, where a floating feature fireplace and Le Corbusier Chaise Longue create a nook to relax. From here, there's direct access to a private patio. Monochrome tones wrap around the en suite bathroom, complete with a freestanding black bathtub and rainfall shower.

Warm white Limewash infuses the guest bedroom with a welcoming feel. A soothing tone is amplified with soft light, diffused through glass doors opening to a tranquil internal courtyard. Serving this bedroom, a bathroom enveloped in dark textured wallpaper comes with a bathtub.

Also on this floor, a brightly-lit office space features access through the courtyard to a sauna.







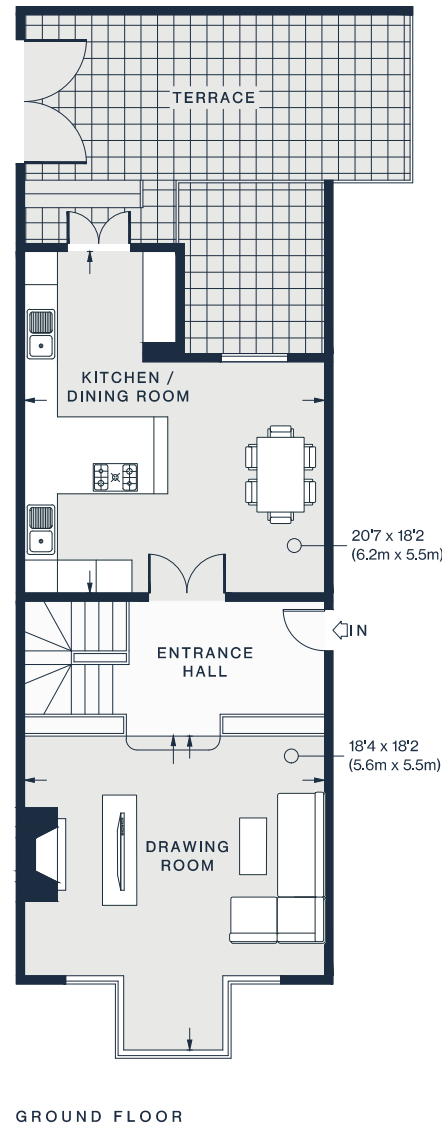
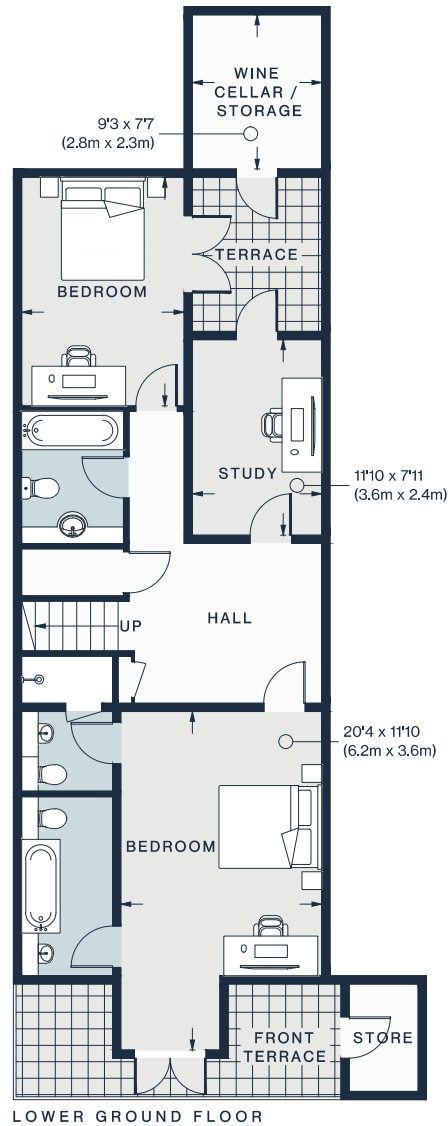












Approx. Gross Internal Area = 1,535 sq ft / 142.6 sq m

## Property Details

- Open-plan kitchen and dining room
- Reception room
- Principal bedroom suite
- Guest bedroom
- Family bathroom
- Study/bedroom
- Two patios
- Private garden
- Sauna
- Royal Borough of Kensington & Chelsea

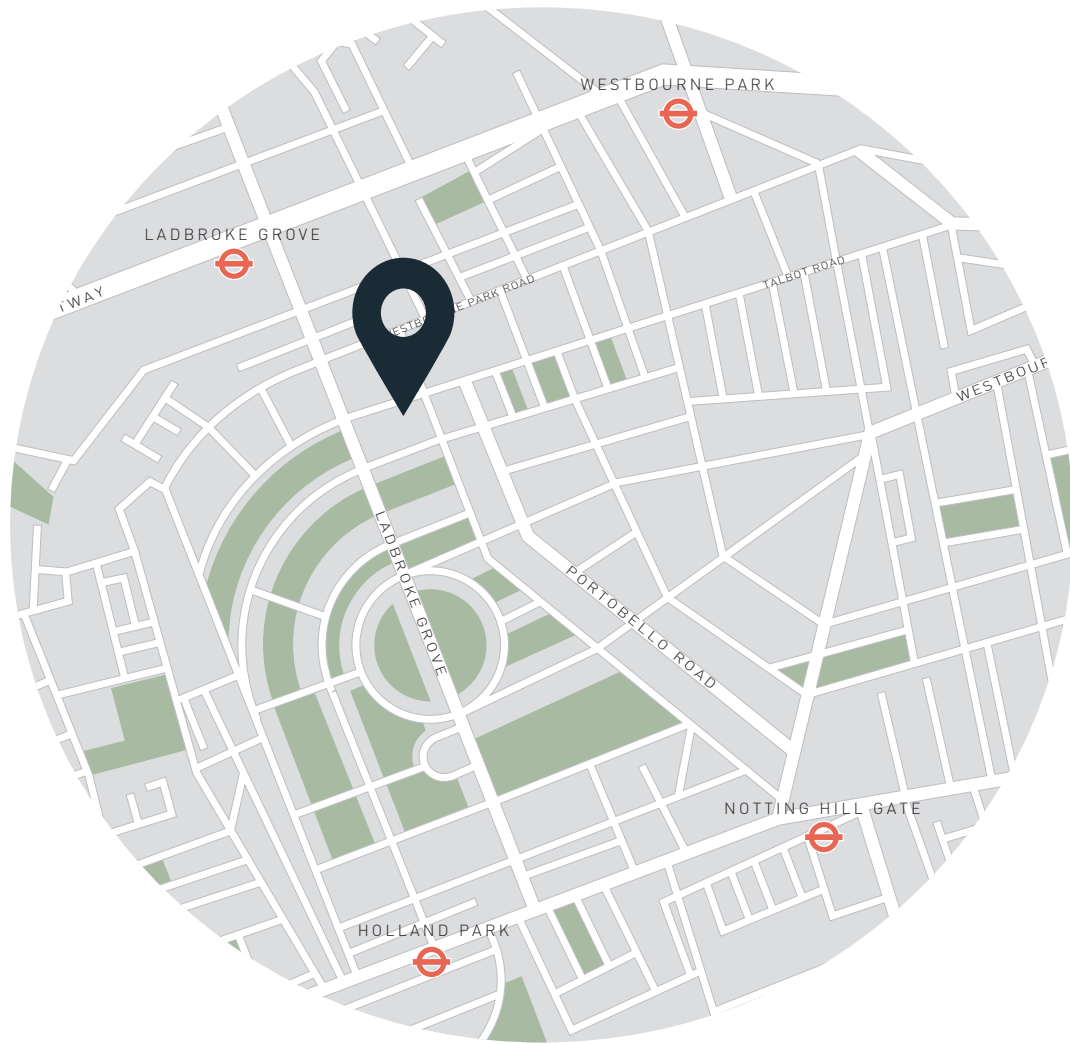
Approx 1,535 sq ft / 142.6 sq m

EPC = E

Council Tax Band = H

Deposit = £16,000

Floor plans are for illustrative purposes only and not to scale. Compliant with RICS code of measuring practice.  
Furniture layouts are indicative only. This property may be furnished, part-furnished or unfurnished. Please refer to your agent for details.



## Location

Connecting Kensington Park Road to Portobello Road, Blenheim Crescent puts Notting Hill's hotspots directly on your doorstep. Grab brunch from Farm Girl, then sift through the antiques from Portobello's Market or Notting Hill Bookshop's curated selection of paperbacks. Stop for sweet and savoury delights at Fabrique or try the Pan-Asian dishes at E&O. Come evening, catch a film at the Electric Cinema or tuck into French delicacies at Buvette just downstairs. Finish with a nightcap from Zephyr.

Ladbroke Grove - 5 mins  
Notting Hill Gate - 15 mins

Specialising in London  
and Ibiza's design-led homes

Let's talk

020 7727 1717

lettings@domusnova.com

domusnova.com

The property particulars are a guide not statements. Descriptions, photographs, and plans are for guidance and should be checked by the prospective tenant. The Property is offered "subject to contract and references". No warranties, representations, or Tenancy is given by Domus Nova. Expenses incurred by a prospective tenant will not be reimbursed if the Landlord withdraws prior to the Tenancy Agreement being signed, dated and exchanged and cleared funds received. Furniture and other items shown in a property at viewing may belong to a current tenant. The prospective tenant should verify in writing which fixtures and fittings forms part of the Tenancy. Our full lettings disclaimer together with trading names and our [Privacy Policy](#) is shown on our website