

DOMUS NOVA

Bassett Road

North Kensington W10

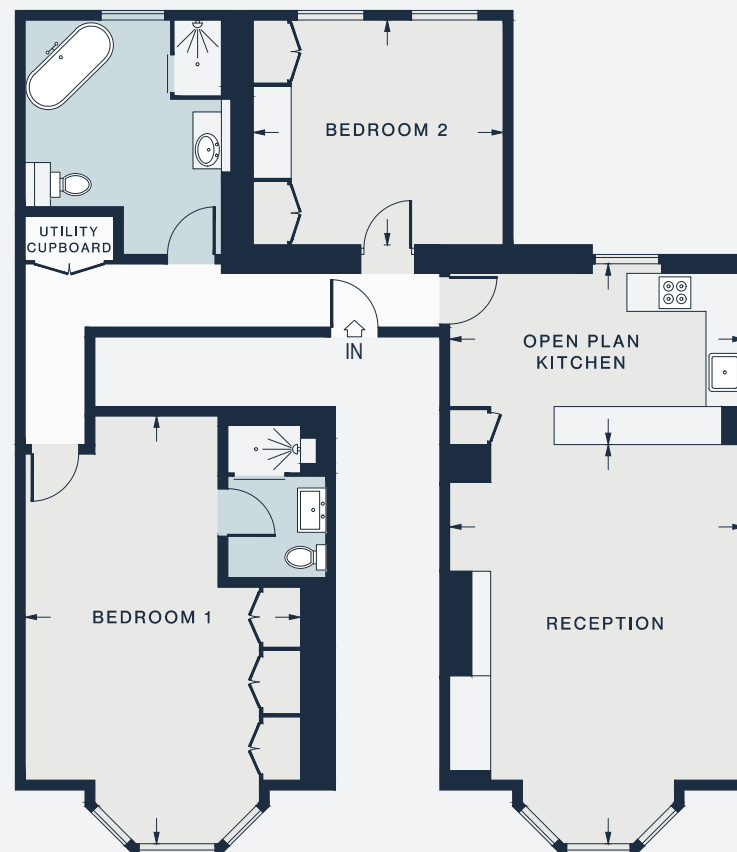
APPROXIMATE GROSS INTERNAL AREA

1096 sq ft / 102 sq m

020 7221 7817

domusnova.com

LONDON | IBIZA



RAISED GROUND FLOOR

RECEPTION
20'5 x 15'0 (6.2m x 4.6m)

OPEN PLAN KITCHEN
15'0 x 9'3 (4.6m x 2.8m)

BEDROOM 1
21'9 x 14'2 (6.6m x 4.3m)

BEDROOM 2
12'11 x 11'6 (3.9m x 3.5m)

Floor plans are for illustrative purposes only and not to scale. Compliant with RICS code of measuring practice.