

DOMUS NOVA

Bassett Road

North Kensington W10

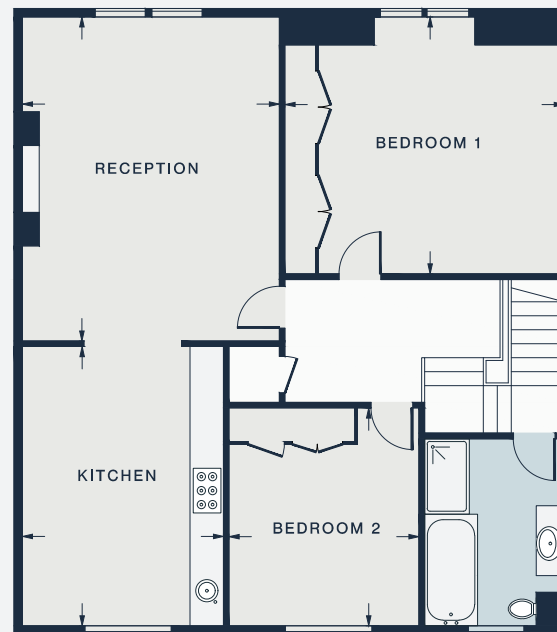
APPROXIMATE GROSS INTERNAL AREA

1,182 sq ft / 109.8 sq m

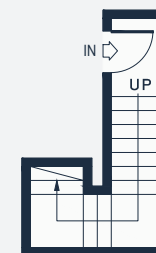
020 7221 7817

domusnova.com

LONDON | IBIZA



SECOND FLOOR



FIRST FLOOR

RECEPTION
19'1 x 15'2 (5.8m x 4.6m)

KITCHEN
16'6 x 11'10 (5.0m x 3.6m)

BEDROOM 1
16'6 x 15'2 (5.0m x 4.6m)

BEDROOM 2
12'10 x 11'2 (3.9m x 3.4m)