

DOMUS NOVA



Bassett Road W10

£1,250,000



Set on the second floor of a Victorian townhouse, this two-bedroom apartment for sale is a quiet retreat in North Kensington.

Behind a redbrick façade with elaborately designed bargeboards and intricate masonry, a design-led home awaits. Sunlight pours into the dual-aspect kitchen and reception room, enhancing high ceilings and warm wood floors. Pale pink walls pair with a marble fireplace in the living area while white subway tiles characterise the shaker-style kitchen. Integrated appliances create a contemporary feel while white wooden shutters and a heritage fireplace nod to the home's period framework.







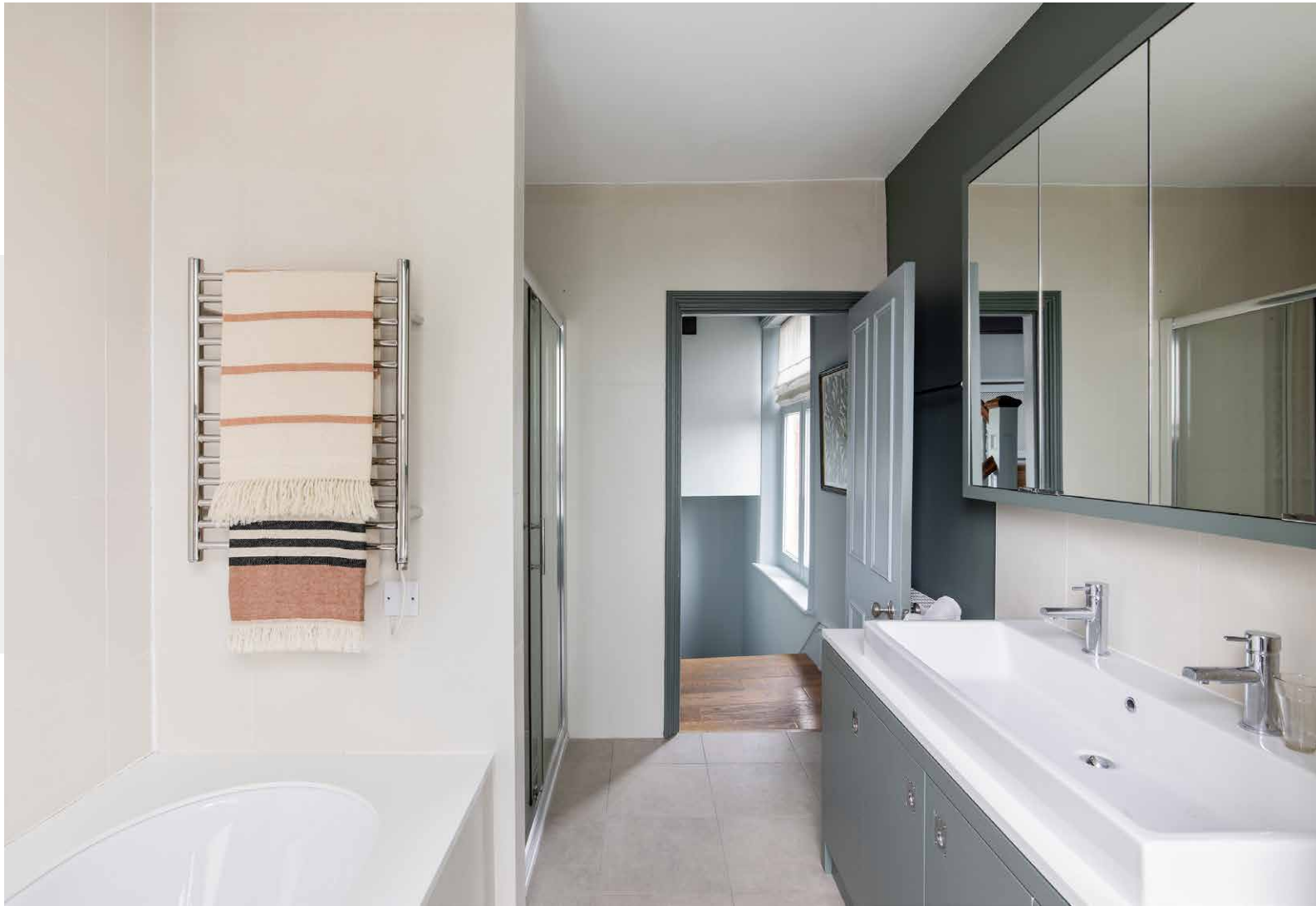




Along the corridor, the principal bedroom strikes a calming tone while capitalising on space. With its bespoke joinery, muted palette and south-facing windows offering views of the quaint, tree-lined street, it's a peaceful space. Finished with a feature fireplace and textural carpet underfoot, the room has a sense of timeless elegance.

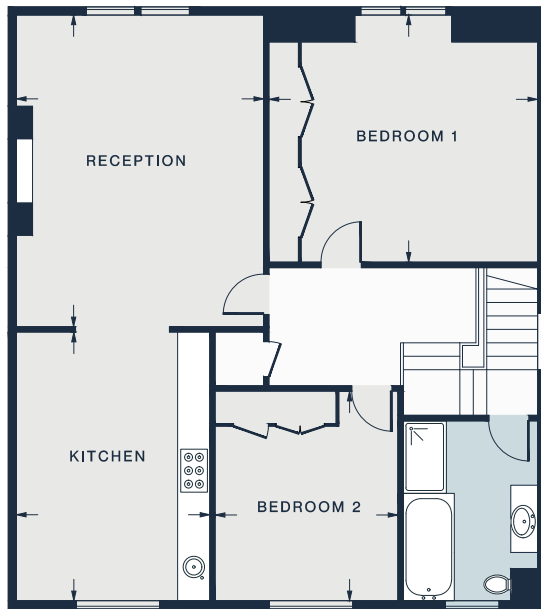
The second bedroom is all soft colours and considered spatial interventions – ideal as a home office or guest room. A family bathroom benefits from a dual vanity, a bathtub and a separate walk-in rainfall shower.



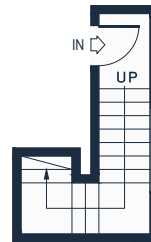








SECOND FLOOR



FIRST FLOOR

RECEPTION
19'1 x 15'2 (5.8m x 4.6m)

BEDROOM 1
16'6 x 15'2 (5.0m x 4.6m)

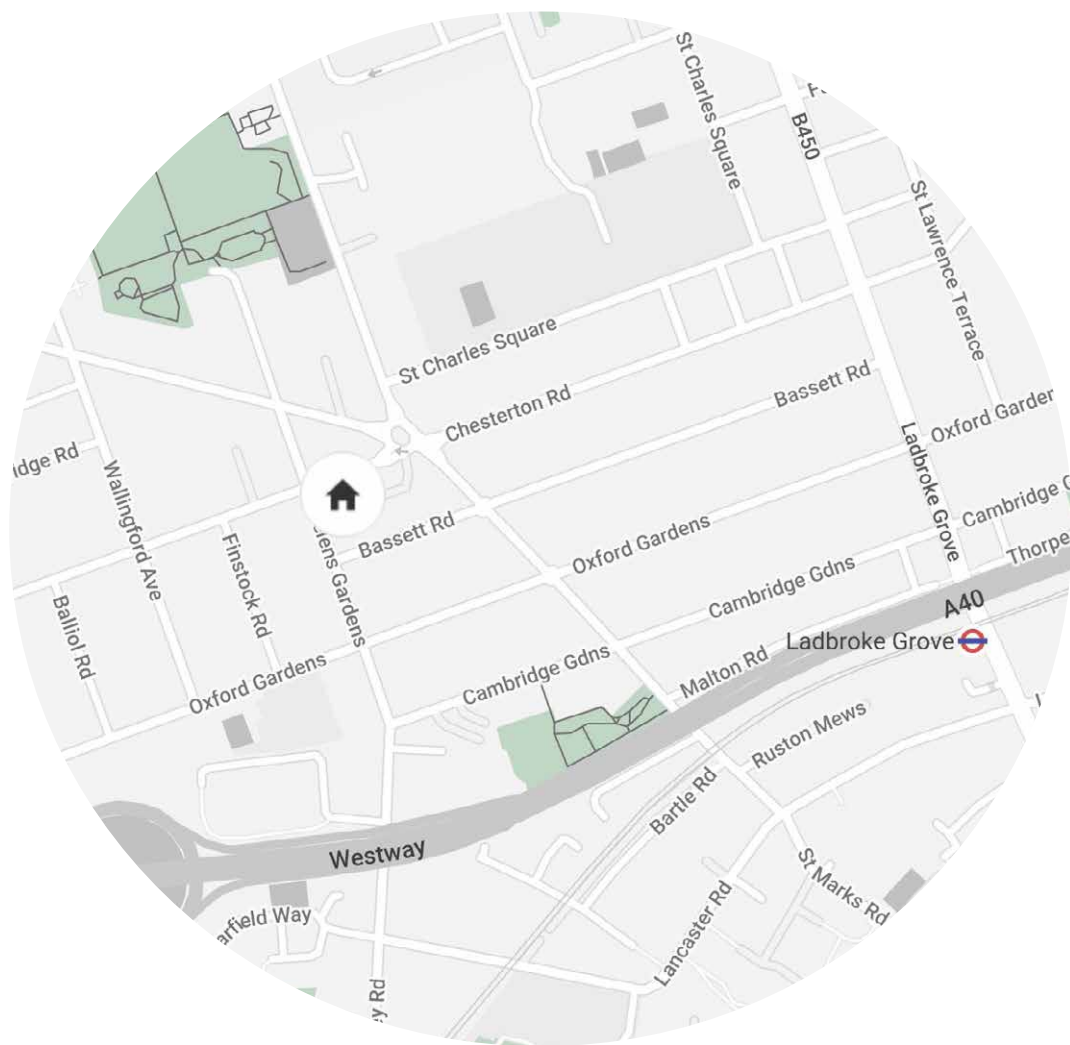
KITCHEN
16'6 x 11'10 (5.0m x 3.6m)

BEDROOM 2
12'10 x 11'2 (3.9m x 3.4m)

Property Details

Large south-facing reception room
Contemporary kitchen
Two large double bedrooms
Family bathroom
Triple-aspect
Royal Borough of Kensington and Chelsea

Approx 1,182 sq ft / 109.8 sq m
Leasehold
145 year lease
Council tax band = F
EPC = D



Location

With Ladbrooke Grove and Portobello Road right on its doorstep, Bassett Road is conveniently located to enjoy the hotspots of Notting Hill. Breathe in the fresh air at Wormwood Scrubs in less than twenty minutes or set your sights on trinkets galore at Portobello Market. For a bite to eat, take a short stroll to The Pelican on All Saints Road or Granger and Co. on Westbourne Grove.

Ladbrooke Grove (6 mins)

Specialising in London
and Ibiza's design-led homes

Let's talk
020 7221 7817
sales@domusnova.com
domusnova.com

The particulars above are a guide, not an offer or contract. Descriptions, photographs and plans are not statements or representations of fact. Measurements are approximate and not to scale. Prospective purchasers must verify the accuracy of the information within the particulars. Domus Nova does not give any representations or warranties, nor represent the Seller legally. Domus Nova has no liability, for any costs, losses or expenses incurred by the Seller or a prospective buyer relating to the sales and buying transaction.

Our Sales Disclaimer, trading names and privacy policy on how your data is processed and used is found in full on our website in our [Privacy Statement](#).

© Domus Nova 2023. All rights reserved.