

# DOMUS NOVA



Artesian Road W2  
£2,095,000



A hallmark of expertly-imagined, modern living by tastemaker Samuel Chisholm awaits on this peaceful Notting Hill street. The entrance lobby leads to the semi-open kitchen and dining space. Draw back the panel of birch ply shutters to flood the room with south-facing light. It's an environment envisaged for creative cooks; terrazzo worktops and a polished copper splash-back, which subtly amplifies the sense of space. Additional light is afforded through clerestory windows and a skylight – positioned over a reading nook.

The architectural staircase – inspired by the work of Swiss architect Adolphe Appia – ascends the entire property, sculpted with incurved bannisters and Dinesen douglas fir treads. The balustrade is illuminated; casting a warm and inviting glow. The first-floor reception room is both uplifting and serene, lit through dual-aspect windows and with expansive Dinesen flooring. During warmer months, open the double doors to the rear, with peaceful leafy views over the neighbouring gardens.









The principle bedroom, found on the top floor, has a calm and voluminous feel. There's a bright, alpine-esque aesthetic to the space, thanks to the blonde panelled walls, cork floors, the skylight and a miniature log burner. Concertina doors open to reveal the en-suite bath sat beneath a central dormer window; a lustrous panel of milled brass is an eye-catching detail – drawing in light which is beautifully gilded across its surface.

Downstairs, a guest bedroom has versatility to be used as a home office or exercise area, finished with neutral tones and pale floors. A set of shutters accentuates the sense of flow and light from this space to the second bathroom. Its dusty pink micro-cement contrasts with brushed brass faucets. This home is a masterpiece in considered materials and structure, spread across communal and intimate spaces alike.

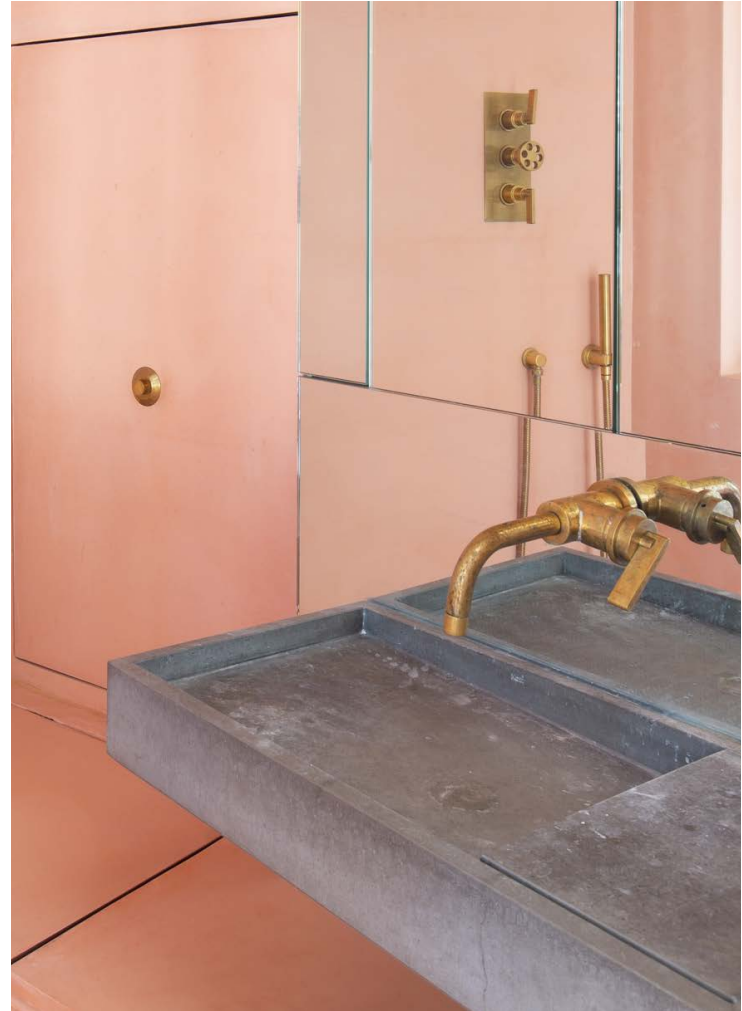




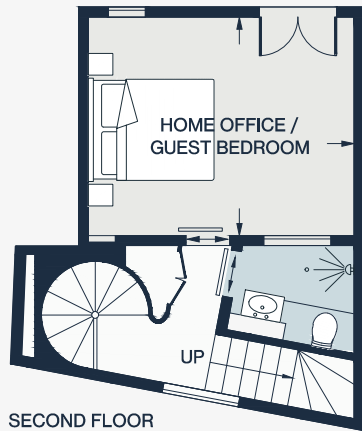




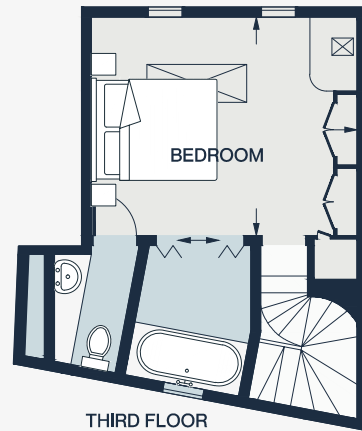




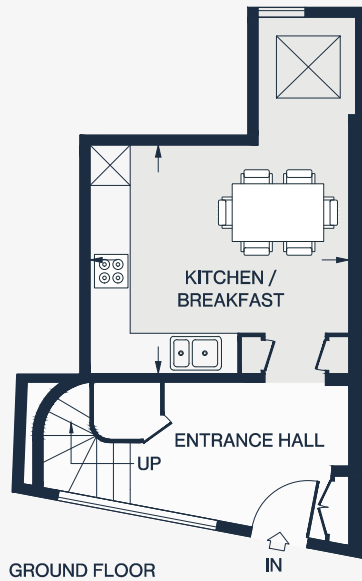




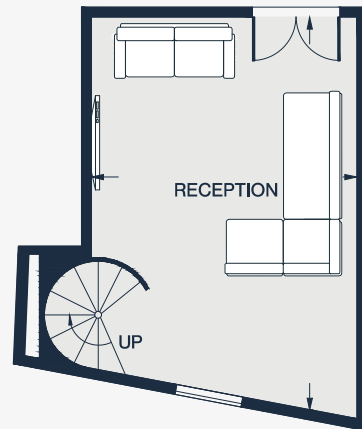
SECOND FLOOR



THIRD FLOOR



GROUND FLOOR



FIRST FLOOR

RECEPTION

19'3 x 12'11 (5.8m x 3.9m)

KITCHEN / BREAKFAST

12'11 x 9'2 (3.9m x 2.8m)

BEDROOM 1

12'11 x 10'11 (3.9m x 3.3m)

HOME OFFICE / GUEST BEDROOM

12'11x 10'5 (3.9m x 3.1m)

## Property Details

Entrance hall with architectural staircase

First-floor reception room

Contemporary kitchen / dining space

Top floor principle bedroom

Guest bedroom / Home office

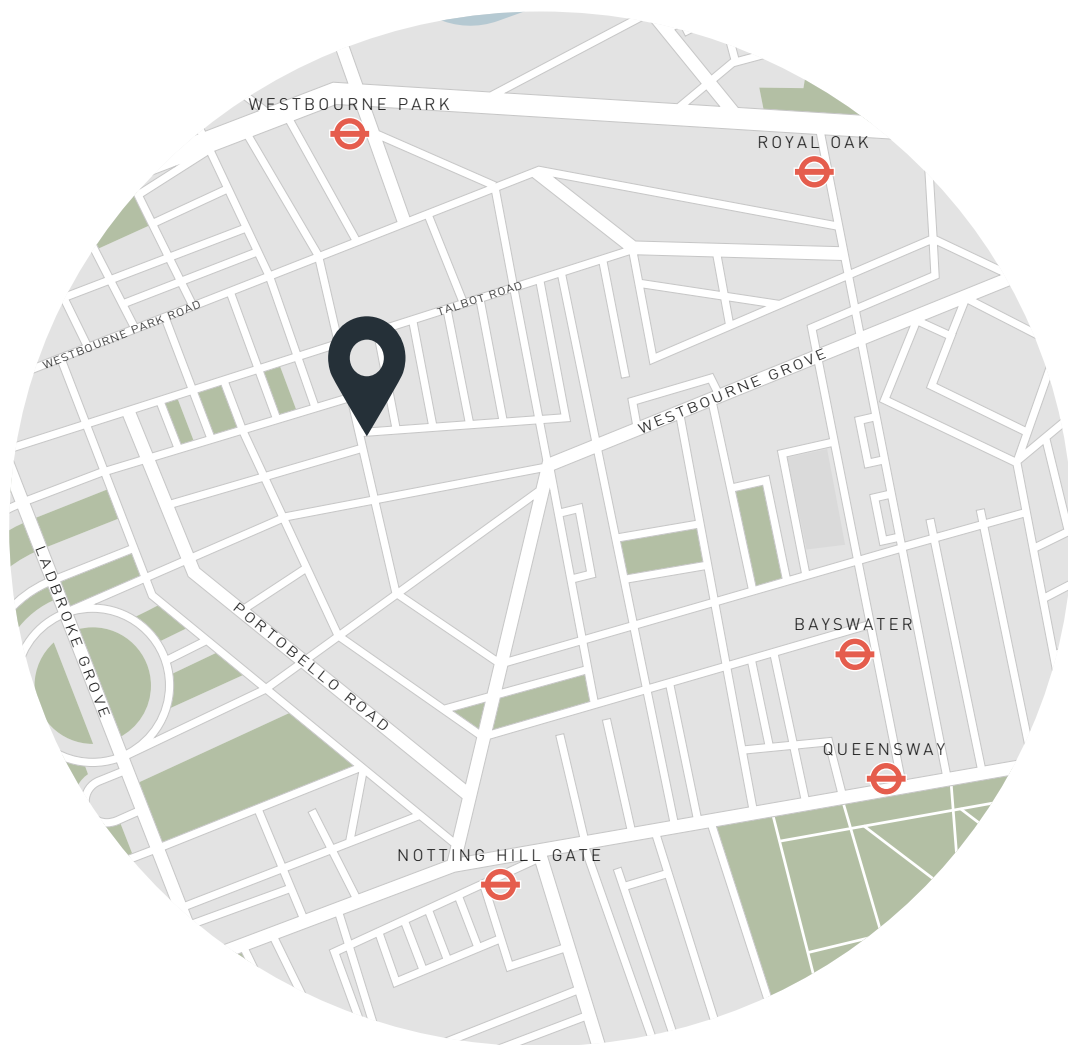
Architect: Samuel Chisholm

City of Westminster

Approx. 1020 sq ft / 95 sq m

EPC = D

Council Tax Band = F



## Location

Serene living in the beating heart of Notting Hill. Artesian Road is a peaceful residential street just off Ledbury Road, home to coveted eateries such as Ottolenghi and The Ledbury, or wellness spots like FaceGym and Caudalie Boutique Spa. In a few minutes, you're on fashionable Westbourne Grove or vibrant Portobello Road, characterised by their vast array of restaurants, vintage boutiques and galleries. Pick up essentials from Notting Hill Fish and Meat Shop, or head to Core by Clare Smyth for a night of fine dining. It's a short walk to the Tube, giving you easy access to central London and beyond.

### Nearest Tube:

Notting Hill Gate – 10 minutes (Central, Circle, District)  
Westbourne Park – 9 minutes (Hammersmith & City, Circle)

Specialising in London  
and Ibiza's design-led homes

Let's talk  
020 7221 7817  
sales@domusnova.com  
domusnova.com

The particulars above are a guide, not an offer or contract. Descriptions, photographs and plans are not statements or representations of fact. Measurements are approximate and not to scale. Prospective purchasers must verify the accuracy of the information within the particulars. Domus Nova does not give any representations or warranties, nor represent the Seller legally. Domus Nova has no liability, for any costs, losses or expenses incurred by the Seller or a prospective buyer relating to the sales and buying transaction.

Our Sales Disclaimer, trading names and privacy policy on how your data is processed and used is found in full on our website in our [Privacy Statement](#).

© Domus Nova 2023. All rights reserved.