

DOMUS NOVA



Alexander Street W2
£1,350 p/w (Long Let)



Outside, a quintessential Notting Hill townhouse vaunts a stucco-frontage and cast-iron railings. Inside, minimalist finishes are set for stylish city living. Head up to the third floor and enter the social heart of the home. An open-plan kitchen and reception room makes the most of its inverted layout; dual-aspect lighting is filtered across its spacious footprint.

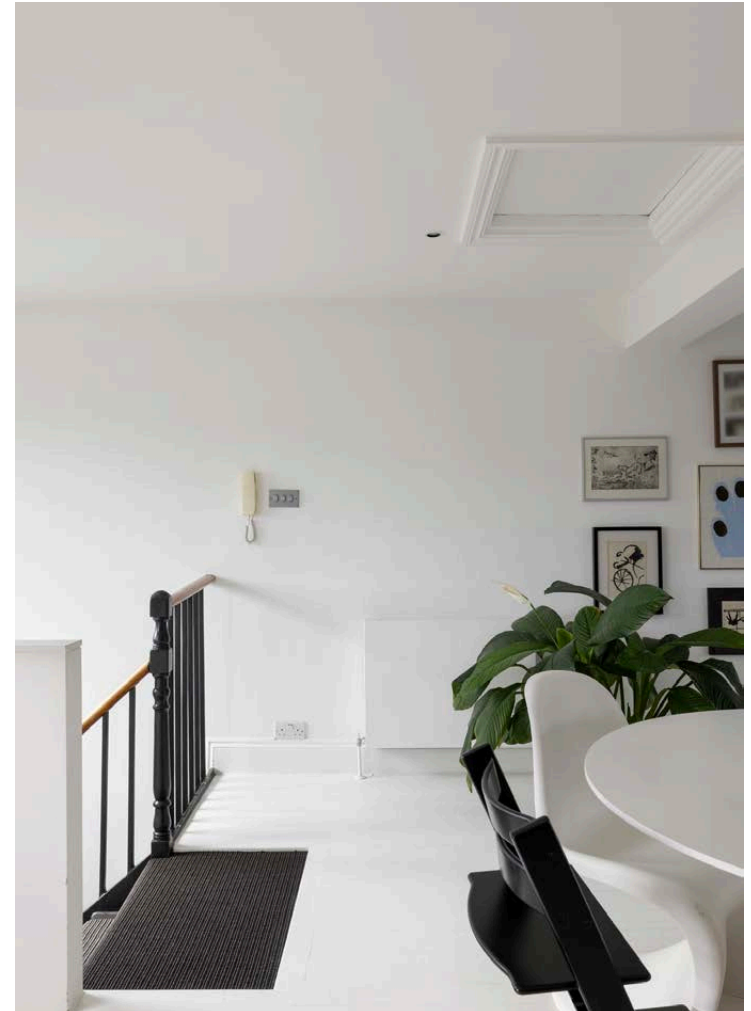
A monochromatic palette across the walls and sweeping wood floors are punctuated with industrial accents; an exposed brick wall and working fireplace add a compelling texture to the space. The kitchen pairs form with function, featuring smooth marble surfaces, integrated appliances and a striking tiled splashback. On the half-landing, step out to the south-west facing balcony – a secluded spot for quiet summer evenings.







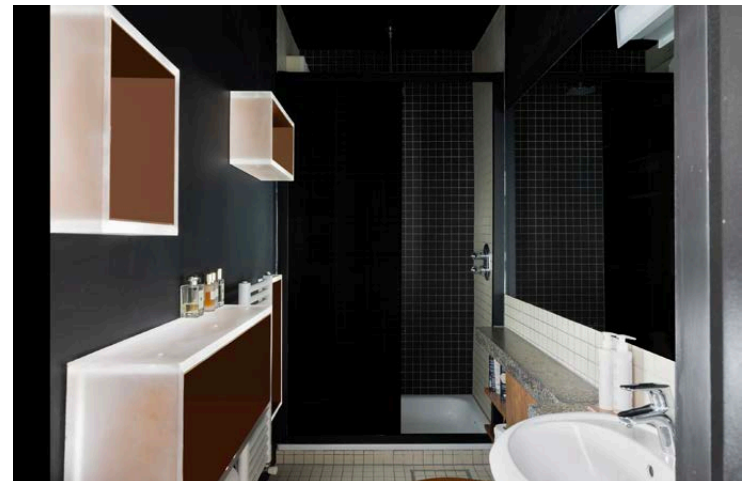




The stylish tones and tranquil atmosphere continue into the sleeping quarters downstairs. The master bedroom is a soothing space, with plush grey carpets, floor-to-ceiling wardrobes and a sleek ensuite bathroom. A second bedroom has versatility to be used as an office space, served by a family bathroom wrapped in monochromatic mosaic tiling.









RECEPTION / KITCHEN
29'4 x 17'10 (9.0m x 5.4m)

BEDROOM 2
14'7 x 10'1 (4.4m x 3.3m)

BEDROOM 1
17'3 x 11'11 (5.3m x 3.6m)

Property Details

Open-plan kitchen and reception room
 Master bedroom with ensuite bathroom
 Guest bedroom and bathroom
 Decked balcony
 City of Westminster

Approx. 1,135 sq ft / 105.4 sq m
 EPC = D
 Council Tax Band = G
 Deposit = £8,100



Location

A springboard to and from vibrant west London, Alexander Street is a stone's throw away from coveted eateries, boutiques and a host of transport spots. Westbourne Grove is set for weekend brunches at Beam, Farmacy or Granger & Co. Refresh your wardrobe at Sézane or Reformation, before heading to FaceGym for an invigorating facial workout. Head to The Oak for dinner, followed by a drink at Notting Hill's favourite, The Cow – home in two minutes.

Royal Oak (5 mins)

Specialising in London
and Ibiza's design-led homes

Let's talk

020 7727 1717

lettings@domusnova.com

domusnova.com

The property particulars are a guide not statements. Descriptions, photographs, and plans are for guidance and should be checked by the prospective tenant. The Property is offered "subject to contract and references". No warranties, representations, or Tenancy is given by Domus Nova. Expenses incurred by a prospective tenant will not be reimbursed if the Landlord withdraws prior to the Tenancy Agreement being signed, dated and exchanged and cleared funds received. Furniture and other items shown in a property at viewing may belong to a current tenant. The prospective tenant should verify in writing which fixtures and fittings forms part of the Tenancy. Our full lettings disclaimer together with trading names and our [Privacy Policy](#) is shown on our website