

DOMUS NOVA

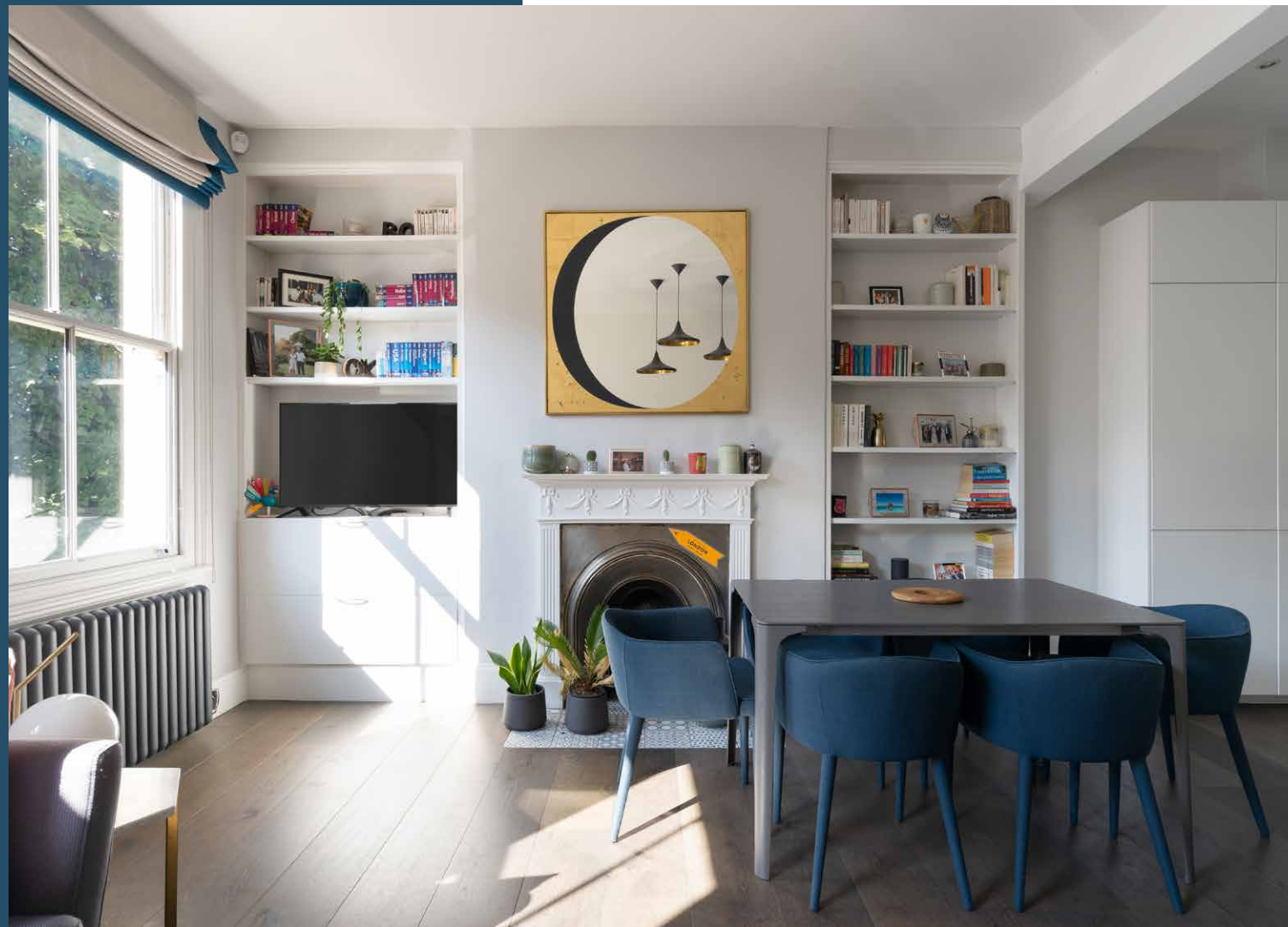


Westbourne Park Road W11
£1,395,000

Spread across two floors in a striking blue stucco terrace, this home is every bit as characterful as you would expect, with elevated ceilings, enormous light-flooding sash windows and a charming fireplace.

Enter on the first floor and you'll reach a bright, spacious open-plan living-kitchen-dining space that spans the length and width of the property. A fluid configuration in the south-facing living area gives you free rein to arrange the space as you wish.

The contemporary white gloss kitchen is well equipped with everything you would need for an evening of entertaining at home, including a generously sized wine rack, double oven, and seamlessly concealed fixtures and fittings. Dark wood countertops mirror the finish of the dark wood floors that run throughout this lower floor, unifying the space and adding to its sense of flow.

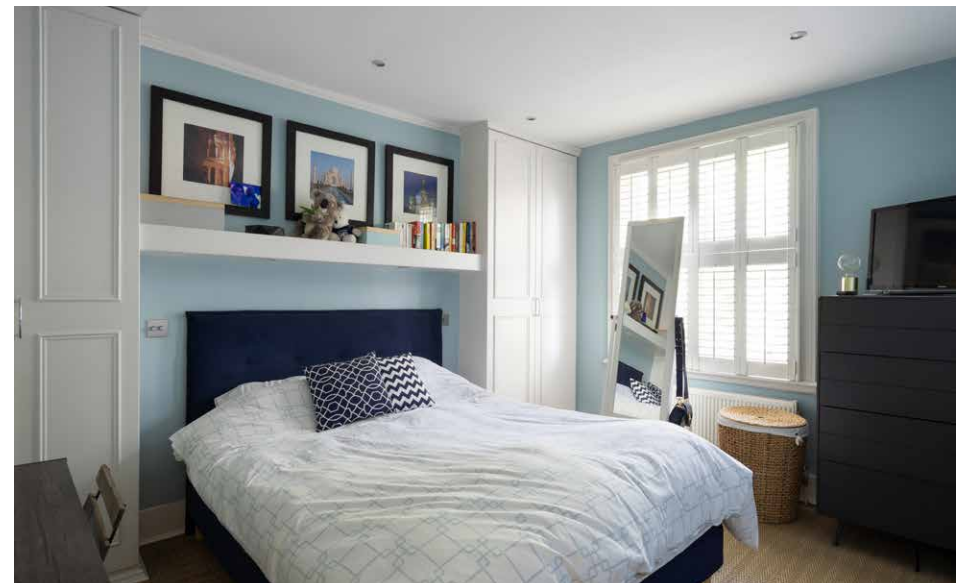




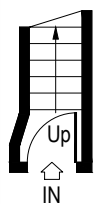


On the second floor of the building you'll find all three bedrooms, each finished with white painted wooden shutters, muted walls and a warmly inviting sisal carpet.

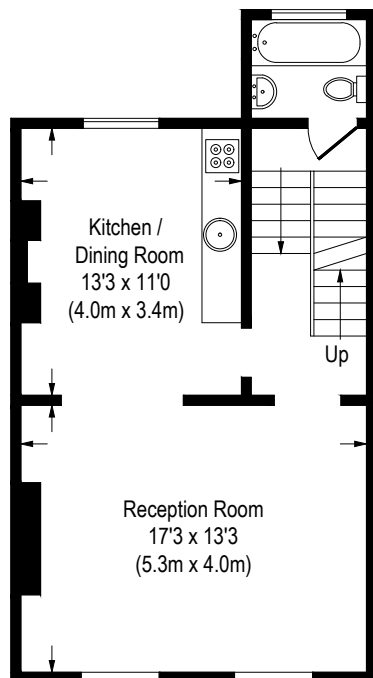
Two generously sized double bedrooms, both with fitted wardrobes and ample space for desks, should the need to work from home arise. A smaller double bedroom – currently in use as a nursery – is a welcome addition with huge potential for a separate study or comfortable guest room. There's also further fitted storage on the landing of this upper floor.



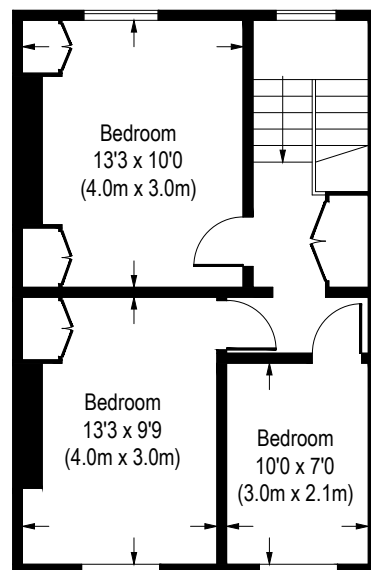




Ground Floor
Entrance



First Floor



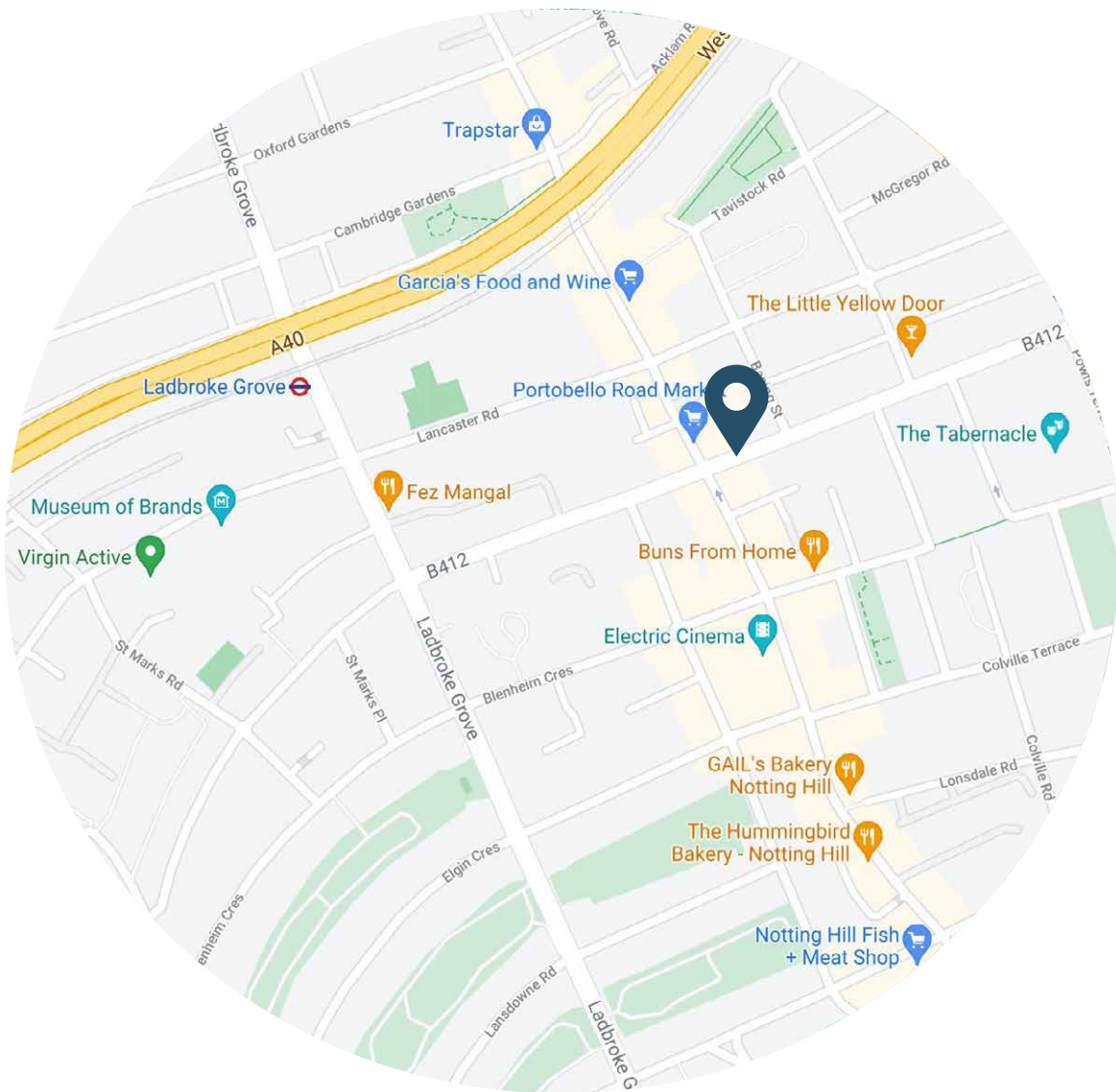
Second Floor

Approximate Gross Internal Area
966 Sq.Ft. / 89.7 Sq.M.

Floor Plans are for illustrative purposes only and not to scale.
Compliant with RICS code of measuring practice.

Property Details

Open plan kitchen/ living/ dining room
Spread across two floors
Sash windows
Fireplace
Three bedrooms
Family bathroom
Fitted storage throughout
Windows in every room
Royal Borough of Kensington & Chelsea
Approx. 996 sq ft / 89.7 sq m EPC=C



Location

In Westbourne Park Road you're in prime position to enjoy quintessential Notting Hill at its finest and all it has to offer: the world-famous Portobello market, the smart fashion and interior boutiques of Ledbury Road, and Westbourne Grove just beyond that. Head to the Cow for Guinness and oysters or if it's coffee or freshly baked bread you're after, the Franco-Persian Butter Bakery and Cafe is practically on your doorstep.

Design-led homes in London's
most sought-after locations.

Let's talk

020 7221 7817

sales@domusnova.com

domusnova.com