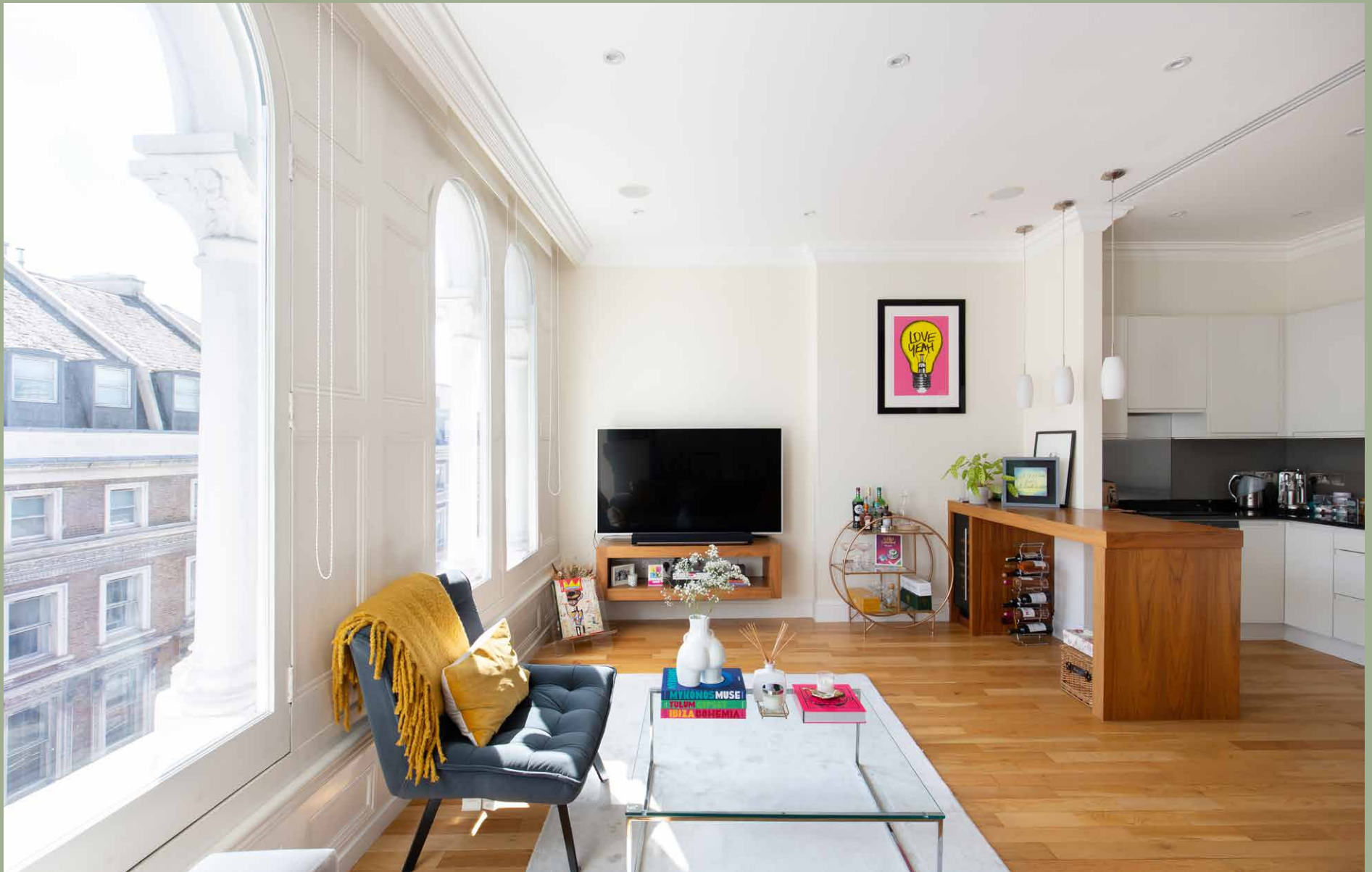


# DOMUS NOVA



Westbourne Grove W2  
£1,350,000

Originally designed as an extension of the Bayswater Athenaeum by architect Arthur Billig, Westbourne Grove was once the beating heart of Notting Hill's cultural scene. And it shows.

Inside, this third-floor apartment elevates its traditional architecture with a thoroughly modern design. An open-plan layout makes the kitchen and living area the social hub of the home. Subtly zoned, there's a seamless flow of light and space here. Move easily between pouring coffee at granite counters to flicking through the channels on the sofa.

Gather around the dining table with mains prepared in the streamlined kitchen – high-spec, integrated appliances make cooking effortless and there's plenty of storage for organic produce from nearby Planet Organic. Note the wine cooler built into the wooden island. In the bedrooms, soft light and pared-back aesthetics create a sense of peace and quiet.









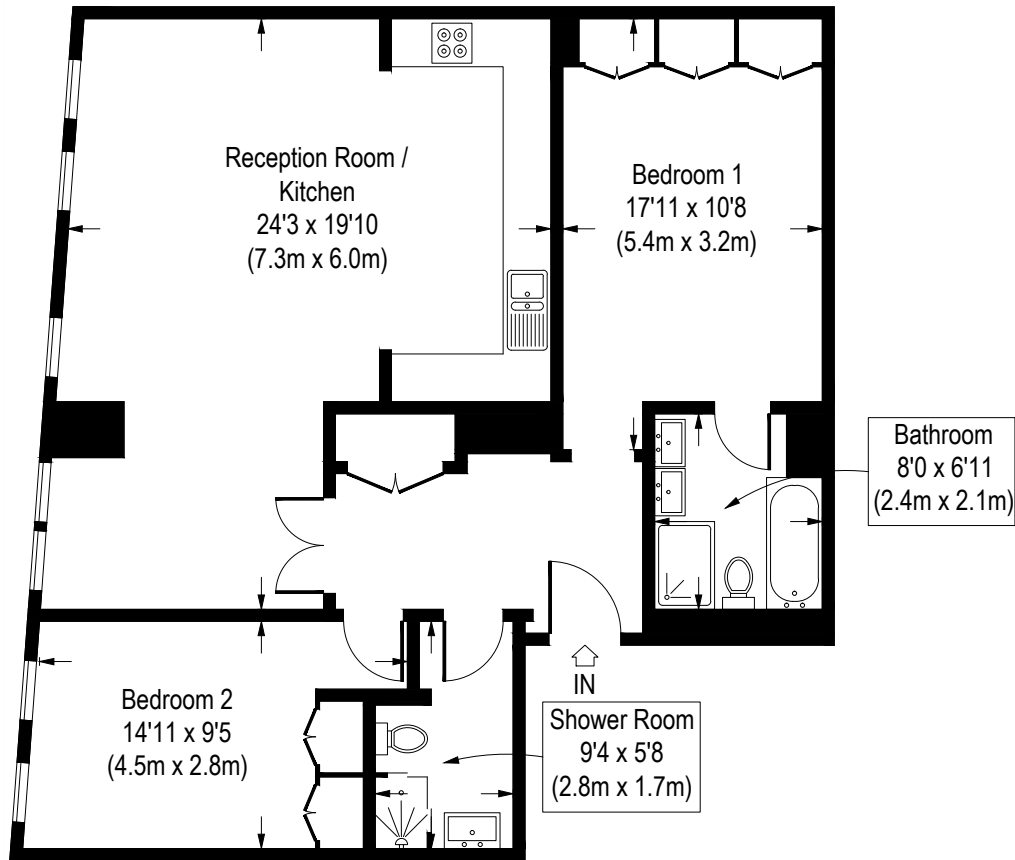
The master enjoys wall-to-wall storage, space for a dressing table and an en-suite with twin vanities, a shower and a bath.

The second is served by a family bathroom and is perfect for overnight guests. Or reimagine it as a home office or gym. It's a property that's hard to miss from the outside too.

Theatrical effigies – from Queen Victoria to Dante – gaze out from above Italianate-style, arched windows. Sculptured pilasters topped by decorative capitals frame the stucco-fronted facade. A home carved with history.







Third Floor

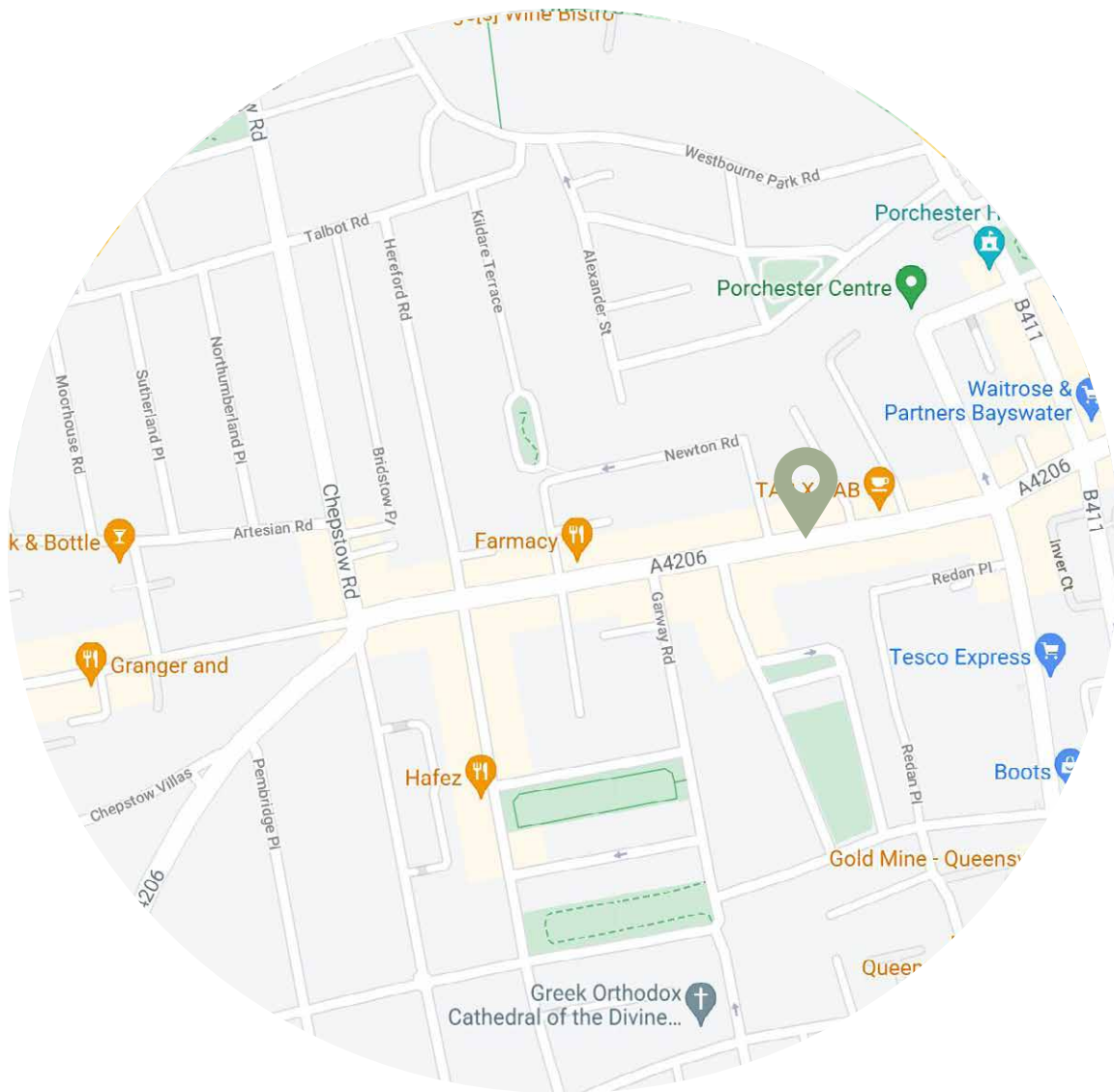
Approximate Gross Internal Area  
979 Sq.Ft. / 91 Sq.M.

Floor Plans are for illustrative purposes only and not to scale.  
Compliant with RICS code of measuring practice.

## Property Details

Bright open-plan living area  
Two bedrooms  
Two bathrooms  
Royal Borough of Kensington & Chelsea  
Approx. 979 sq ft / 91 sq m. EPC=D





## Location

Wandering down Westbourne Grove, you'll find a string of upscale boutiques, artisan cafés and lively restaurants that capture the essence of Notting Hill's cosmopolitan spirit. Start the day with brunch at Granger and Co. before browsing the shelves at Diptyque. A quick personal training session at Bodyism before biodynamic middle-eastern plates at Ottolenghi. In ten minutes, you could be strolling the Italian Gardens near Kensington Palace or browsing the vintage stalls on Portobello Road in less than 15.

Design-led homes in London's  
most sought-after locations.

Let's talk

020 7221 7817

[sales@domusnova.com](mailto:sales@domusnova.com)

[domusnova.com](http://domusnova.com)