

DOMUS NOVA



Sunderland Terrace W2
£1,395,000

Sunderland Terrace, lined with leafy trees and blonde-brick, stucco-fronted Georgian townhouses, is one of Notting Hill's most handsome streets. Inside, you'll find interiors that press fast forward on its period architecture. Proportions carved with light and space in mind. Finishes that are as meticulous as its details.

Display shelving, pared-back aesthetics and high ceilings create an inviting atmosphere in the open-plan kitchen and reception room. It's a laid-back space, where the living room flows seamlessly into the kitchen and dining area, subtly zoned by an island. A glass roof side return lets the sun wash across whitewashed wooden floors and honed splashback. Reams of storage keep counters clutter-free and modern appliances are cleverly integrated. From here, a set of double doors leads to a south-facing walled garden, where a trellis dressed in creeping ivy adds to the sense of privacy.





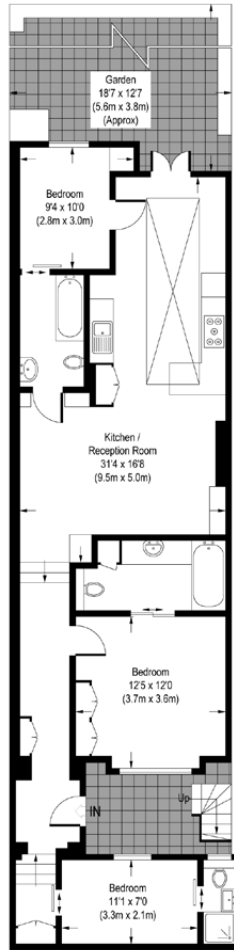


Three relaxing bedrooms are spaces of solace; hushed colours and ample natural light. Two are en suite, with sliding pocket doors that reveal fuss-free bathrooms. The third is served by a jack-and-jill bathroom accessed via the bedroom and the lounge. Repurpose one as a study.









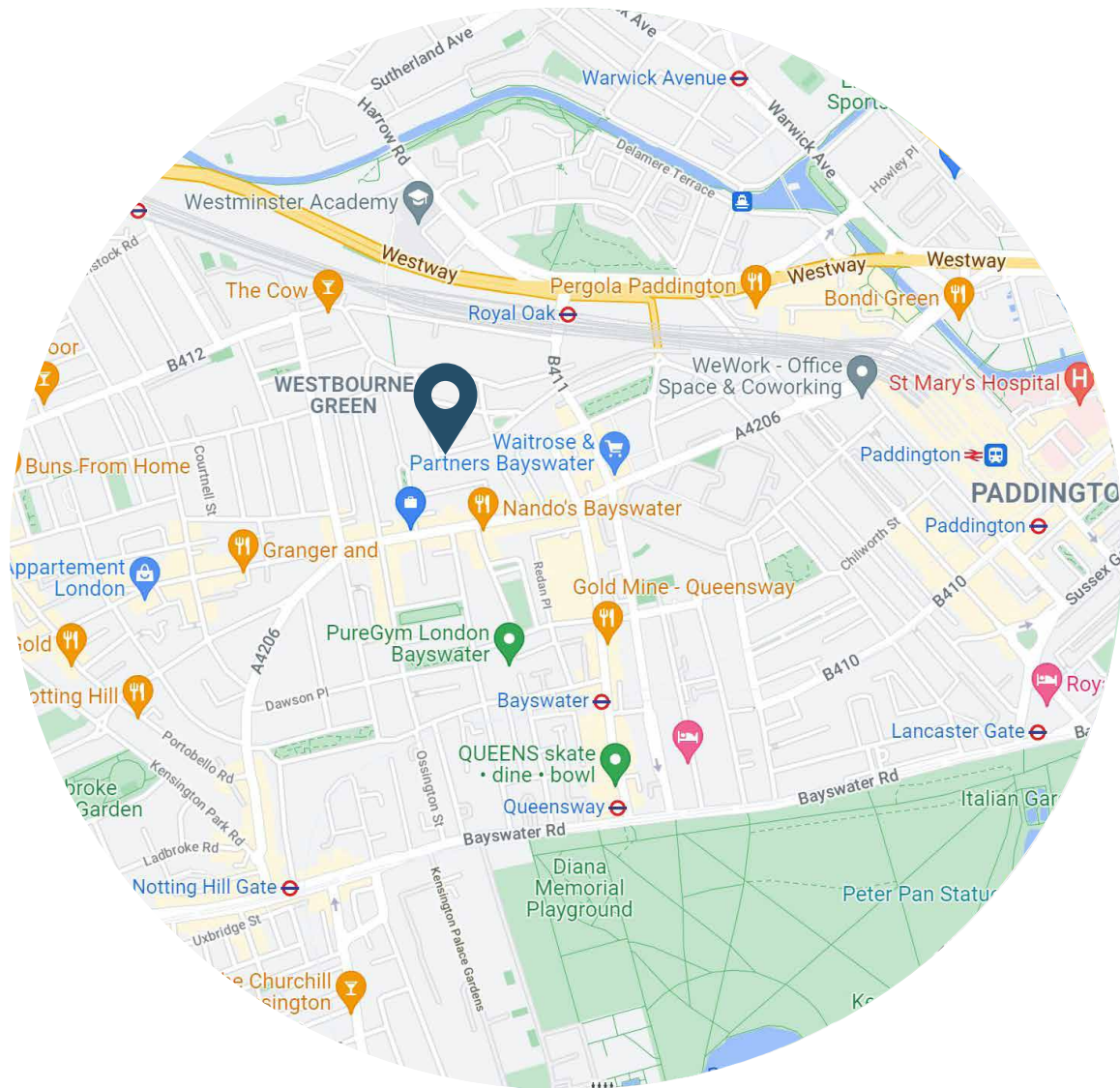
Lower Ground Floor

Approximate Gross Internal Area
976 Sq.Ft. / 90.6 Sq.M.

Floor Plans are for illustrative purposes only and not to scale.
Compliant with RICS code of measuring practice.

Property Details

- Open-plan kitchen and living area
- Modern kitchen
- Two en-suite bedrooms
- One further bedroom
- South-facing garden
- Approx. 976 sq ft / 90.6 sq m EPC=C



Location

There's a sense of welcome on this residential street – a row of Georgian houses just off Westbourne Gardens. From here, you can reach the string of Notting Hill's independent boutiques, restaurants and bars in under ten minutes.

Start your day with a session at Psycle before brunch at Farmacy or Granger and Co. Browsing shelves of Parisian-influenced fragrances at Diptyque or organic fresh produce at Spring to Go. End the night at the legendary Cow. Be back home in five.

Specialising in London
and Ibiza's design-led homes

Let's talk
020 7221 7817
sales@domusnova.com
domusnova.com